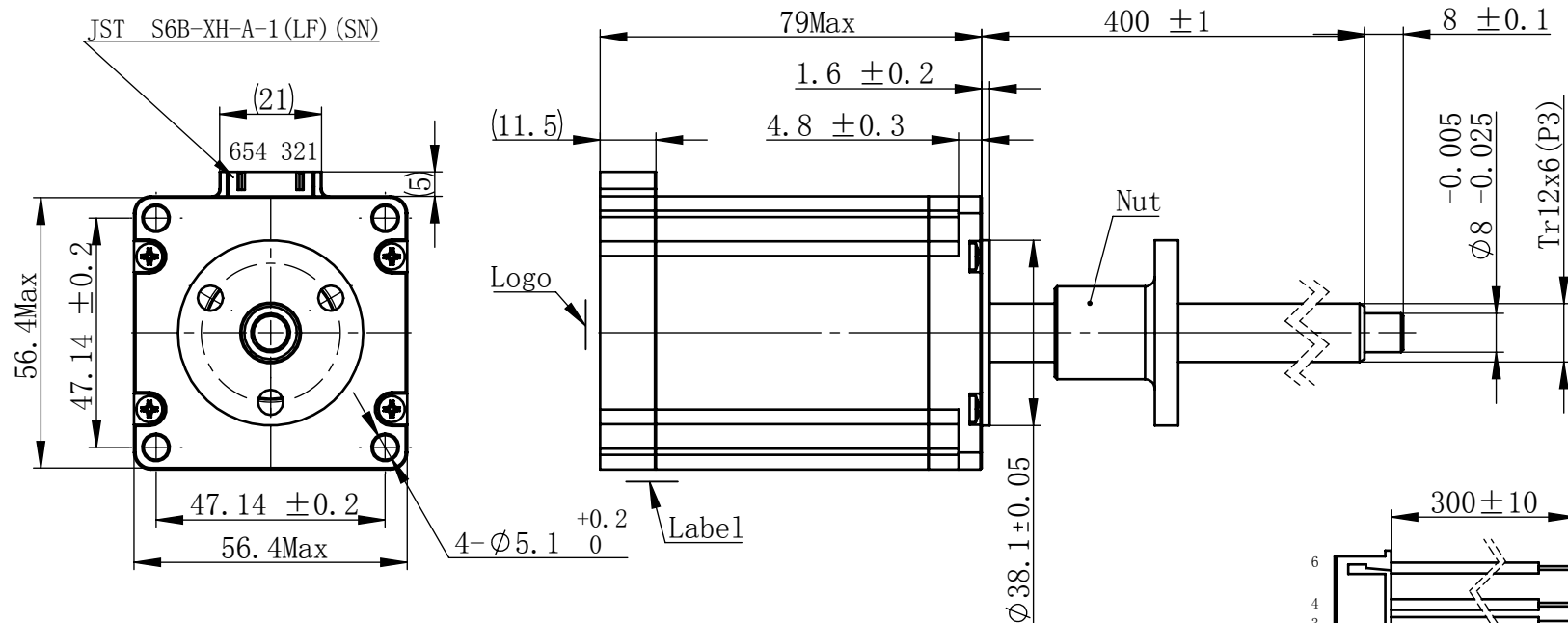


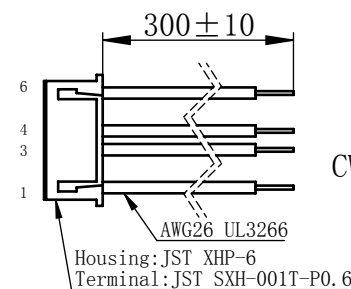
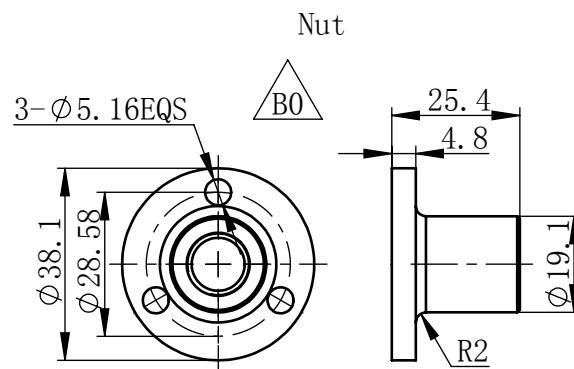
Material NO.

Unit: mm



## 规格 Specifications

1	相数 Number Of Phase	2
2	步长 Linear Travel/Step	0.03 mm (1.8° )
3	额定电压Rated Voltage	6.5 V DC
4	额定电流 Rated Current	1.5 Amp
5	额定推力 Rated Thrust	125 N(@300rpm, rated current)
6	相电阻 Phase Resistance	4.3 ohm±10% (20℃)
7	相电感 Phase Inductance	18.5 mH±20% (1kHz 1V rms)
8	转子惯量 Rotor Inertia	365 gcm <sup>2</sup>
9	重量 Weight	0.84 Kg
10	绝缘等级 Insulation Class	B(130℃)
11	丝杠直径 Screw Diameter	12 mm
12	丝杠导程 Lead	6 mm

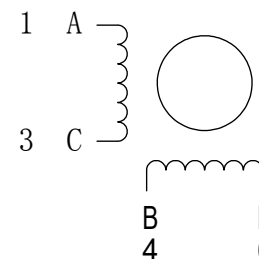


连接器针位vs. 引线颜色  
Pin No. vs. Lead Wire Colour

Pin No.	颜色 Colour
1	黑 BLA
3	绿 GRN
4	红 RED
6	蓝 BLU

## 接线图

## Wiring Diagram



## 励磁顺序 vs. 旋转方向 Exciting Sequence vs. Direction of Rotation

STEP	A	B	C	D
1	+	+	-	-
2	-	+	+	-
3	-	-	+	+
4	+	-	-	+

从安装面看为顺时针方向  
Clockwise view from  
mounting side

电机标签  
Motor label

LEAD SCREW MOTOR  
LE23AS-T1206-400-AR6-S-150  
XXXXXXXX

批次号

未标注线性尺寸和公差  
Tolerance for linear and dimensions  
without individual tolerance indications  
GB/T 1804-M eqv ISO 2768-1:M

未标注形状与位置尺寸公差  
Geometrical tolerance for features  
without individual tolerance indications  
GB/T 1184-K eqv ISO 2768-2:K

设计 Design	杨淑娟	2018/11/8
校核 Check		
工艺 Process		

First Angle Method

**PBC MOONS'** 上海市闵行区  
鸣嘉路168号  
上海鸣志派博思自动化技术有限公司 (021) 52634688

## 版本变更

版本	变更说明	签名	日期
B0	更改螺母AR4==>AR6	杨淑娟	2018/11/8



- I. 请避免螺母脱离丝杠  
Keep nut on screw.
- II. 非专业人士请勿拆解电机  
Avoid disassembly without qualification.

标准化 Standard		
批准 Approve		

材料 Material	总
Page 1 of 1	

图	Scale	Part Name	
	2:3	型号 Model NO.	LE23AS-T1206-400-AR6-S-150
版本 Version	B0	物料号 Material NO.	4611110029546