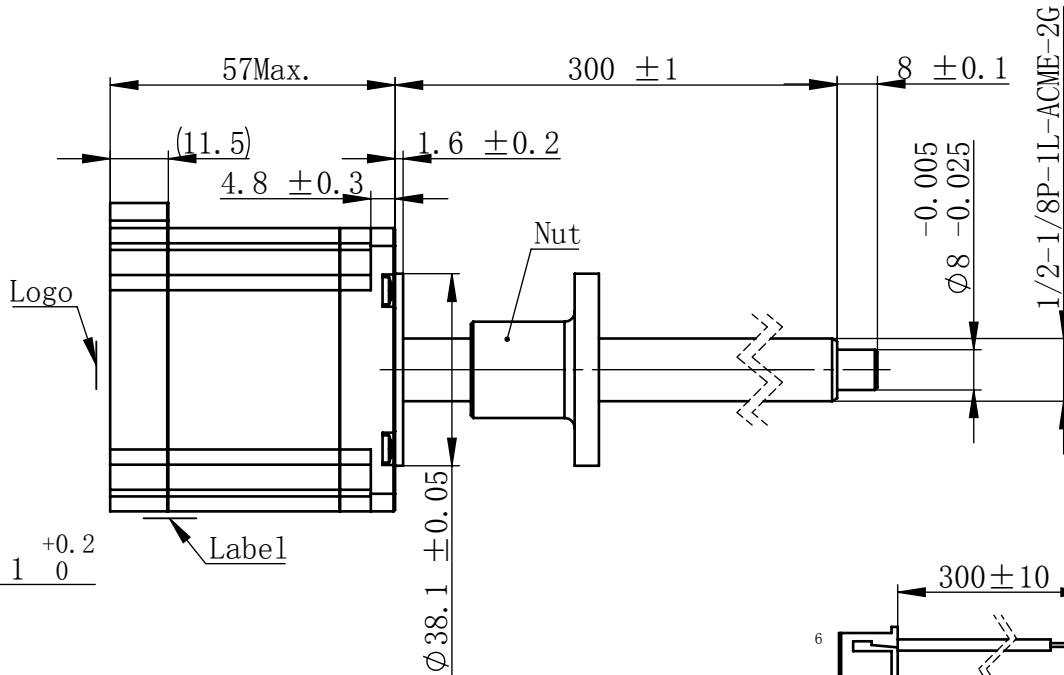
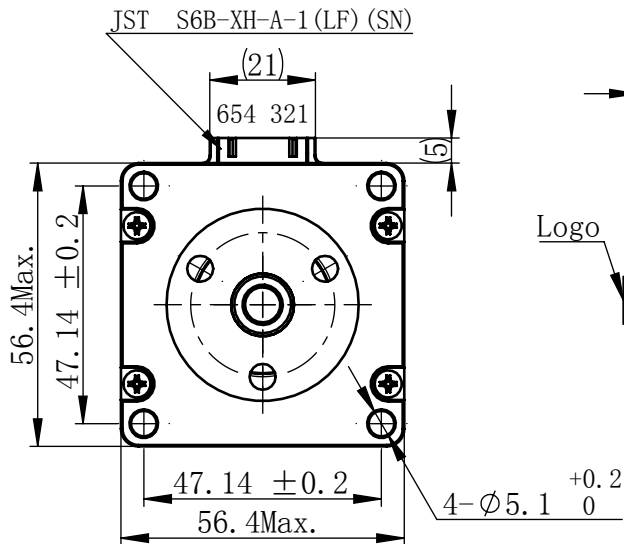


9866Z0029984
Material NO. 4611110029984
物料号

Unit: mm

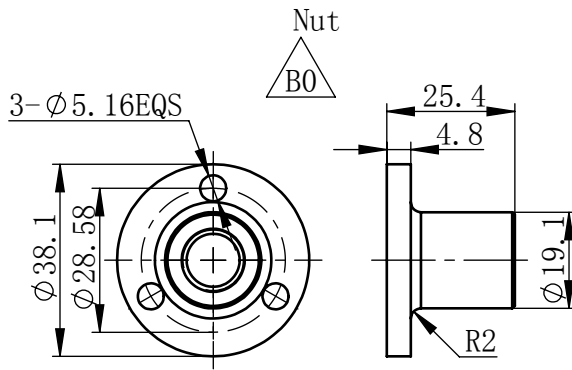


规格 Specifications

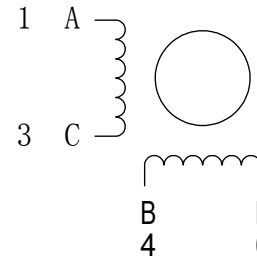
1	相数 Number Of Phase	2
2	步长 Linear Travel/Step	0.127 mm (1.8°)
3	额定电压 Rated Voltage	3.5 V DC
4	额定电流 Rated Current	2.2 Amp
5	额定推力 Rated Thrust	39 N (@300rpm, rated current)
6	相电阻 Phase Resistance	1.6 ohm ± 10% (20°C)
7	相电感 Phase Inductance	7.2 mH ± 20% (1kHz 1V rms)
8	转子惯量 Rotor Inertia	215 gcm ²
9	重量 Weight	0.6 Kg
10	绝缘等级 Insulation Class	B (130°C)
11	丝杠直径 Screw Diameter	12.5 mm
12	丝杠导程 Lead	25.4 mm

版本变更

版本	变更说明	签名	日期
B0	更改螺母AR4==>AR6	杨淑娟	2018/11/11



接线图 Wiring Diagram

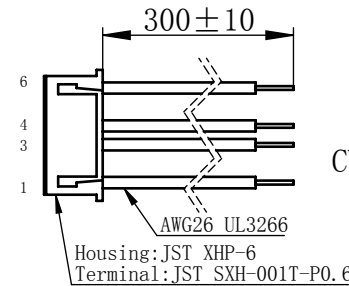


励磁顺序 vs. 旋转方向
Exciting Sequence vs.
Direction of Rotation

STEP	A	B	C	D	CCW
1	+	+	-	-	↑
2	-	+	+	-	
3	-	-	+	+	
4	+	-	-	+	

CW

从安装面看为顺时针方向
Clockwise view from
mounting side



连接器针位 vs. 引线颜色
Pin No. vs. Lead Wire Colour

Pin No.	颜色 Colour
1	黑 BLA
3	绿 GRN
4	红 RED
6	蓝 BLU

电机标签
Motor label

LEAD SCREW MOTOR
LE238S-E12254-300-AR6-S-220
XXXXXXXX

批次号



未标注线性尺寸和公差
Tolerance for linear and dimensions
without individual tolerance indications
GB/T 1804-M eqv ISO 2768-1:M

未标注形状与位置尺寸公差
Geometrical tolerance for features
without individual tolerance indications
GB/T 1184-K eqv ISO 2768-2:K



I. 请避免螺母脱离丝杠
Keep nut on screw.

II. 非专业人士请勿拆解电机
Avoid disassembly without
qualification.

设计
Design

杨淑娟

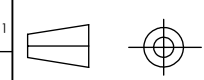
2018/11/11

校核
Check

工艺
Process

标准化
Standard

批准
Approve



First Angle Method

材料
Material

总图

Page 1 of 1

PBC+MOONS' 上海市闵行区
鸣嘉路168号
上海鸣志派博思自动化技术有限公司 (021) 52634688

比例
Scale

零件名
Part Name

直线步进电机

2:3

型号
Model NO.

LE238S-E12254-300-AR6-S-220

物料号
Material NO.

4611110029986