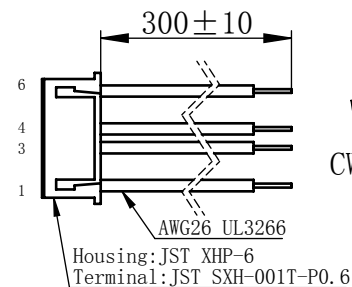
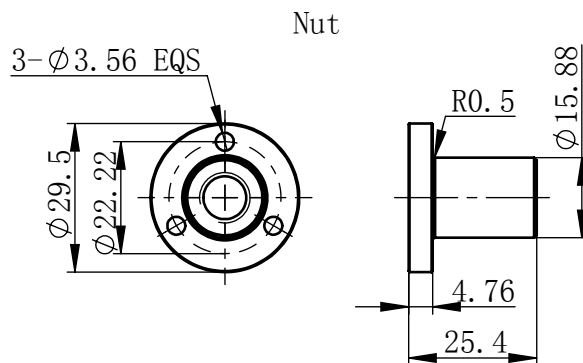
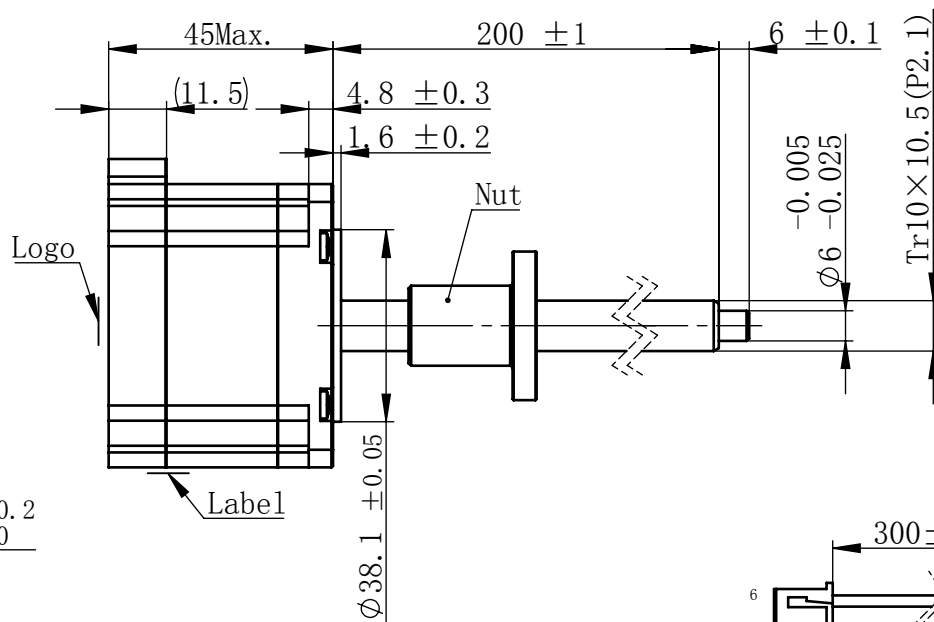
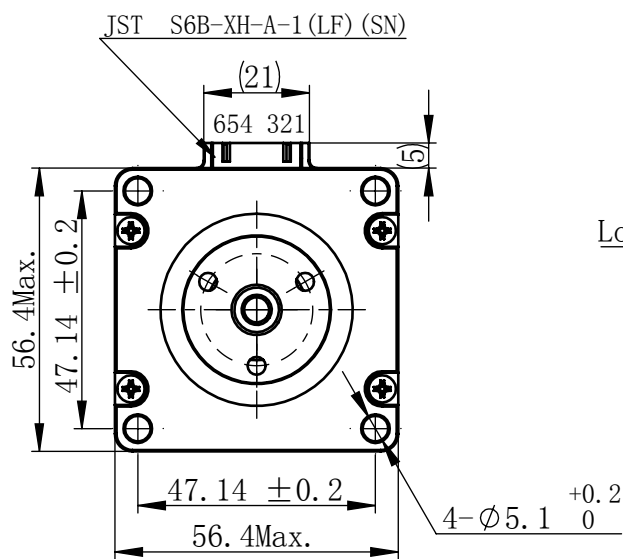


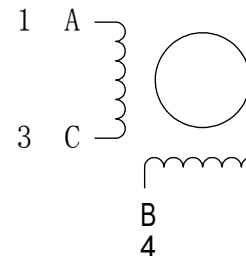
Unit: mm



连接器针位vs. 引线颜色  
Pin No. vs. Lead Wire Colour

Pin No.	颜色 Colour
1	黑 BLA
3	绿 GRN
4	红 RED
6	蓝 BLU

接线图  
Wiring Diagram

励磁顺序 vs. 旋转方向  
Exciting Sequence vs.  
Direction of Rotation

STEP	A	B	C	D
1	+	+	-	-
2	-	+	+	-
3	-	-	+	+
4	+	-	-	+

从安装面看为顺时针方向  
Clockwise view from  
mounting side

电机标签  
Motor label


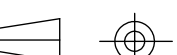

LEAD SCREW MOTOR  
LE234S-T10105-200-AR2-S-210  
XXXXXXXX

批次号

1	相数 Number Of Phase	2
2	步长 Linear Travel/Step	0.0525 mm (1.8° )
3	额定电压Rated Voltage	3.3 V DC
4	额定电流 Rated Current	2.1 Amp
5	额定推力 Rated Thrust	94 N(@300rpm, rated current)
6	相电阻 Phase Resistance	1.6 ohm±10% (20℃)
7	相电感 Phase Inductance	3.9 mH±20% (1kHz 1V rms)
8	转子惯量 Rotor Inertia	180 gcm <sup>2</sup>
9	重量 Weight	0.48 Kg
10	绝缘等级 Insulation Class	B(130℃)
11	丝杠直径 Screw Diameter	10 mm
12	丝杠导程 Lead	10.5 mm

## 版本变更

版本	变更说明	签名	日期
----	------	----	----

未标注线性尺寸和公差 Tolerance for linear dimensions without individual tolerance indications GB/T 1804-M eqv ISO 2768-1:M  未标注形状与位置尺寸公差 Geometrical tolerance for features without individual tolerance indications GB/T 1184-K eqv ISO 2768-2:K   I. 请避免螺母脱离丝杠 Keep nut on screw.  II. 非专业人士请勿拆解电机 Avoide disassembly without qualification.	设计 Design	杨淑娟	2018/7/19	 First Angle Method	 上海市闵行区 鸣嘉路168号  上海鸣志派博思自动化技术有限公司 (021) 52634688	
	校核 Check					
	工艺 Process			材料 Material	比例 Scale	零件名 Part Name
	标准化 Standard			总图	2:3	直线步进电机  型号 Model NO. LE234S-T10105-200-AR2-S-210
	批准 Approve			Page 1 of 1	版本 Version A0	物料号 Material NO. 4611110029925