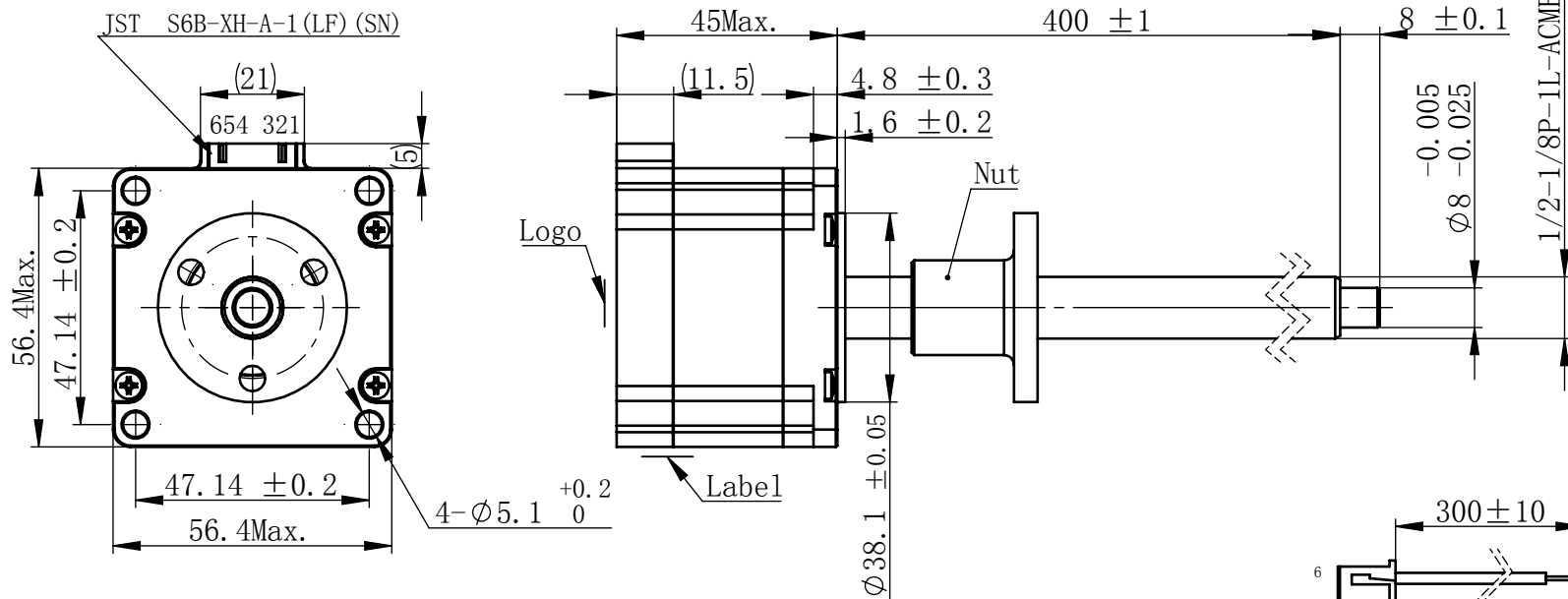


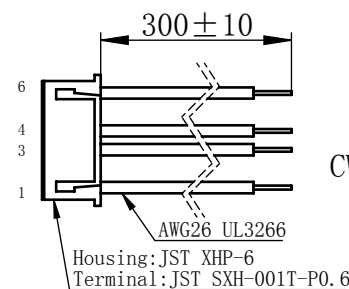
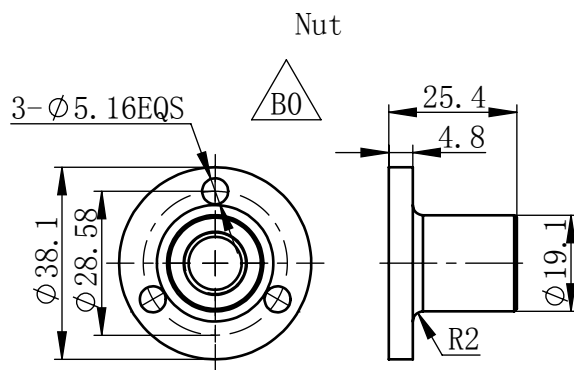
Material NO.

Unit: mm



规格 Specifications

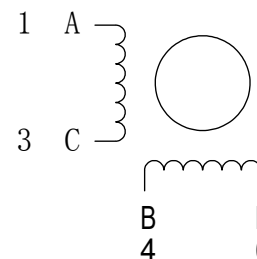
| | | |
|----|-----------------------|------------------------------|
| 1 | 相数 Number Of Phase | 2 |
| 2 | 步长 Linear Travel/Step | 0.127 mm (1.8°) |
| 3 | 额定电压Rated Voltage | 3.3 V DC |
| 4 | 额定电流 Rated Current | 2.1 Amp |
| 5 | 额定推力 Rated Thrust | 36 N(@300rpm, rated current) |
| 6 | 相电阻 Phase Resistance | 1.6 ohm±10% (20℃) |
| 7 | 相电感 Phase Inductance | 3.9 mH±20% (1kHz 1V rms) |
| 8 | 转子惯量 Rotor Inertia | 180 gcm ² |
| 9 | 重量 Weight | 0.48 Kg |
| 10 | 绝缘等级 Insulation Class | B(130℃) |
| 11 | 丝杠直径 Screw Diameter | 12.5 mm |
| 12 | 丝杠导程 Lead | 25.4 mm |



连接器针位vs. 引线颜色
Pin No. vs. Lead Wire Colour

| Pin No. | 颜色 Colour |
|---------|-----------|
| 1 | 黑 BLA |
| 3 | 绿 GRN |
| 4 | 红 RED |
| 6 | 蓝 BLU |

接线图 Wiring Diagram

励磁顺序 vs. 旋转方向
Exciting Sequence vs.
Direction of Rotation




| STEP | A | B | C | D |
|------|---|---|---|---|
| 1 | + | + | - | - |
| 2 | - | + | + | - |
| 3 | - | - | + | + |
| 4 | + | - | - | + |

从安装面看为顺时针方向
Clockwise view from
mounting side

电机标签
Motor label

LEAD SCREW MOTOR
LE234S-E12254-400-AR6-S-210
XXXXXXXX

批次号

| | | | | | | |
|--|-----------------|-----|------------|---|---|---|
| 未标注线性尺寸和公差 Tolerance for linear dimensions without individual tolerance indications GB/T 1804-M eqv ISO 2768-1:M 未标注形状与位置尺寸公差 Geometrical tolerance for features without individual tolerance indications GB/T 1184-K eqv ISO 2768-2:K  I. 请避免螺母脱离丝杠 Keep nut on screw. II. 非专业人士请勿拆解电机 Avoide disassembly without qualification. | 设计 Design | 杨淑娟 | 2018/11/11 |  |  上海市闵行区 鸣嘉路168号 | |
| | 校核 Check | | | First Angle Method | 上海鸣志派博思自动化技术有限公司 (021) 52634688 | |
| | 工艺 Process | | | 材料 Material | 比例 Scale | 零件名 Part Name |
| | 标准化 Standard | | | 总图 | 2:3 | 直线步进电机 型号 Model NO. LE234S-E12254-400-AR6-S-210 |
| | 批准 Approve | | | Page 1 of 1 | 版本 Version B0 | 物料号 Material NO. 4611110029852 |