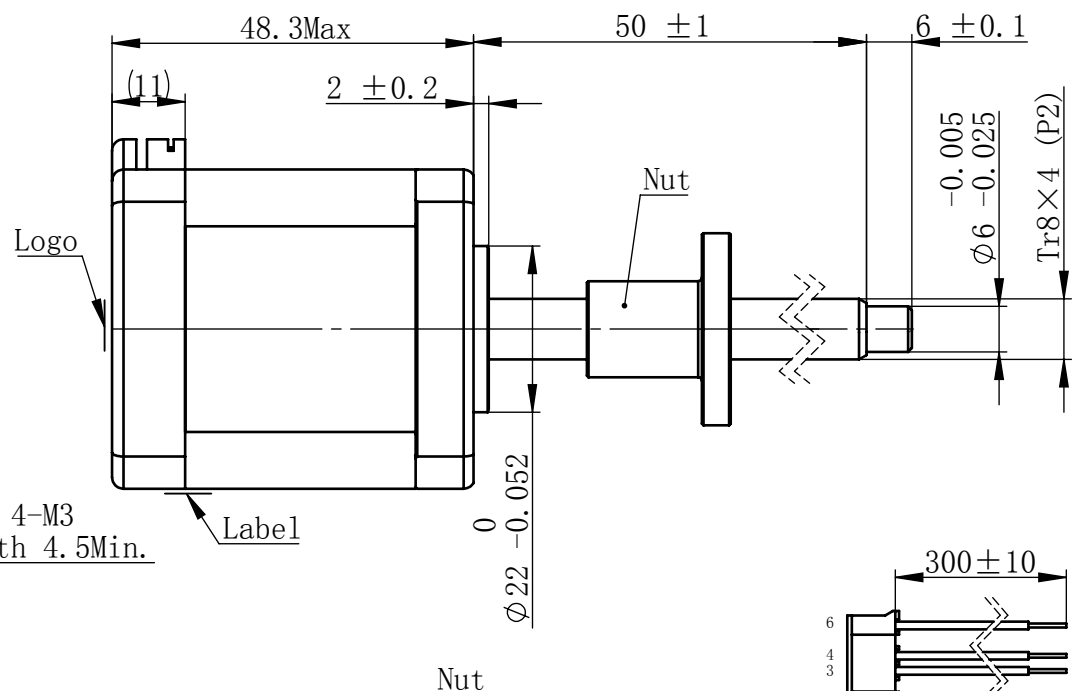
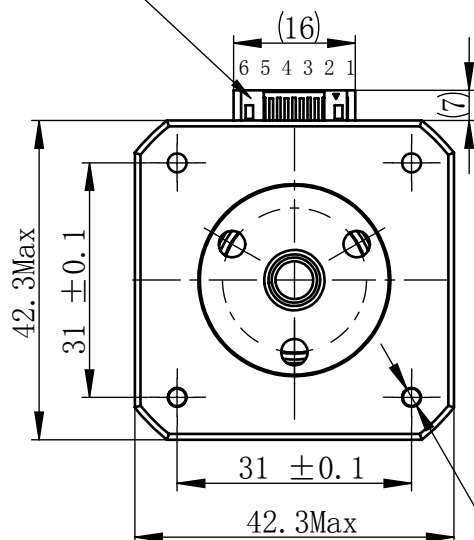


Material NO.

Unit: mm

JST S6B-PH-K-S (LF) (SN)
or MOLEX 89401-0610

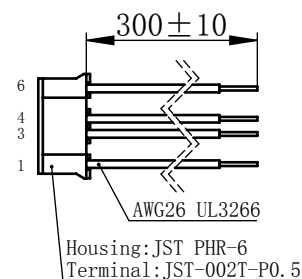
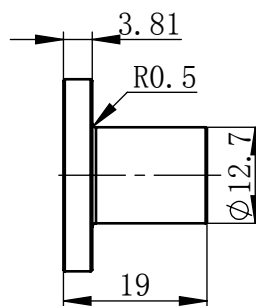
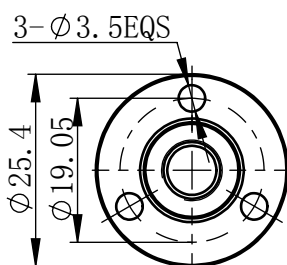


规格 Specifications

1	相数 Number Of Phase	2
2	步长 Linear Travel/Step	0.02 mm (1.8°)
3	额定电压Rated Voltage	4.9 V DC
4	额定电流 Rated Current	1.0 Amp
5	额定推力 Rated Thrust	97 N(@300rpm, rated current)
6	相电阻 Phase Resistance	4.9 ohm \pm 10% (20℃)
7	相电感 Phase Inductance	10.2 mH \pm 20% (1kHz 1V rms)
8	转子惯量 Rotor Inertia	82 gcm ²
9	重量 Weight	0.36 Kg
10	绝缘等级 Insulation Class	B(130℃)
11	丝杠直径 Screw Diameter	8 mm
12	丝杠导程 Lead	4 mm

版本变更

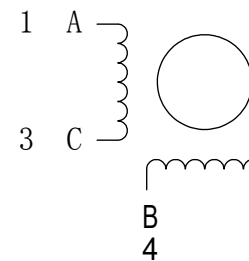
版本	变更说明	签名	日期
----	------	----	----



连接器针位vs. 引线颜色
Pin No. vs. Lead Wire Colour

Pin No.	颜色 Colour
1	黑 BLA
3	绿 GRN
4	红 RED
6	蓝 BLU

接线图
Wiring Diagram



励磁顺序 vs. 旋转方向 Exciting Sequence vs. Direction of Rotation

STEP	A	B	C	D
1	+	+	-	-
2	-	+	+	-
3	-	-	+	+
4	+	-	-	+

The diagram shows a 4x4 grid with a downward arrow on the left labeled 'CW' and an upward arrow on the right labeled 'CCW'. The grid contains the following values:

STEP	A	B	C	D
1	+	+	-	-
2	-	+	+	-
3	-	-	+	+
4	+	-	-	+

从安装面看为顺时针方向
Clockwise view from
mounting side

电机标签
Motor label

LEAD SCREW MOTOR
LE176S-T0804-50-AR3-S-100
XXXXXXXX

批次号

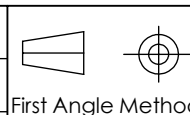
未标注线性尺寸和公差
Tolerance for linear and dimensions
without individual tolerance indications
GB/T 1804-M eqv ISO 2768-1:M

未标注形状与位置尺寸公差
Geometrical tolerance for features
without individual tolerance indications
GB/T 1184-K eqv ISO 2768-2:K



- I. 请避免螺母脱离丝杠
Keep nut on screw.
- II. 非专业人士请勿拆解电机
Avoid disassembly without qualification.

设计 Design	杨淑娟	2018/7/13
校核 Check		
工艺 Process		
标准化 Standard		
批准 Approve		



材料 Material	总图
----------------	----

Page 1 of 1

PBC MOONS 上海市闵行区
鸣嘉路168号
上海鸣志派博思自动化技术有限公司 (021) 52634688

比例 Scale	零件名 Part Name	直线步进电机
1:1	型号 Model NO.	LE176S-T0804-50-AR3-S-100

A0	物料号 Material NO	4611110029703
----	--------------------	---------------