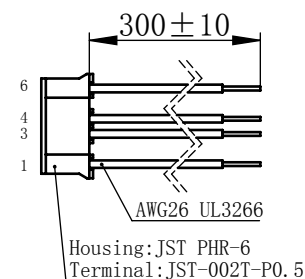
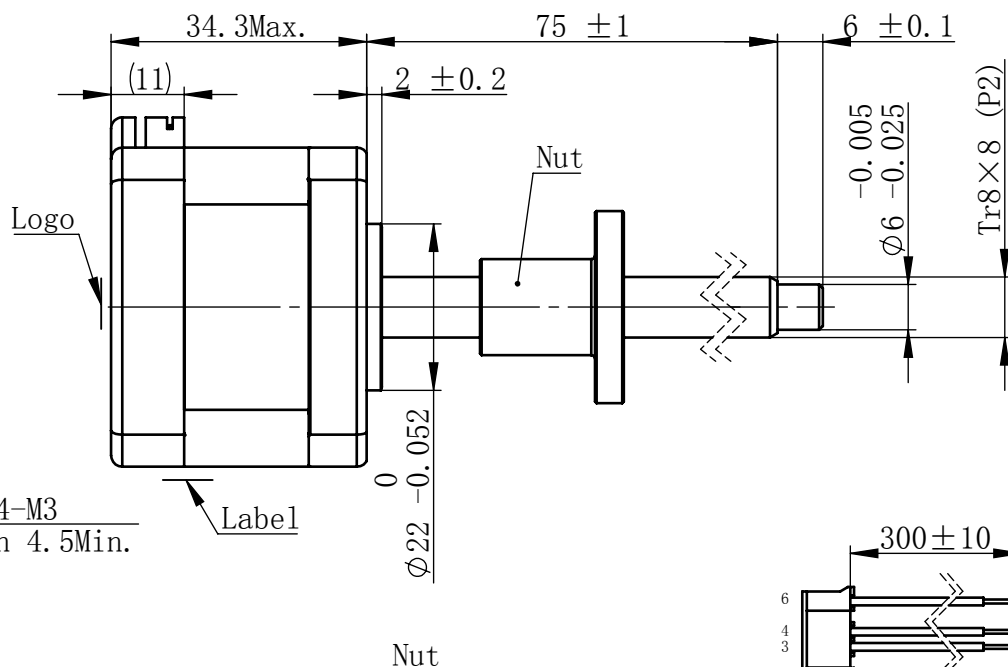
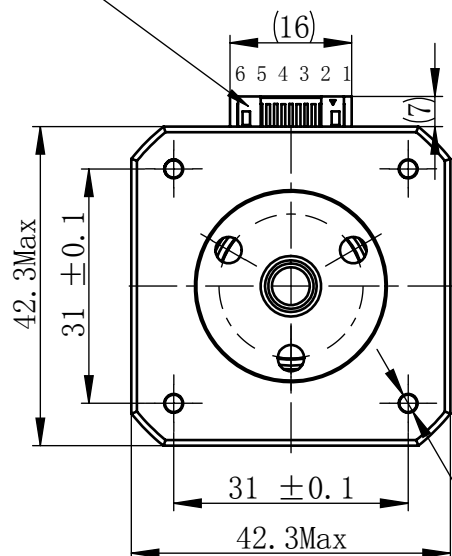


Material NO.

Unit: mm

JST S6B-PH-K-S (LF) (SN)
or MOLEX 89401-0610

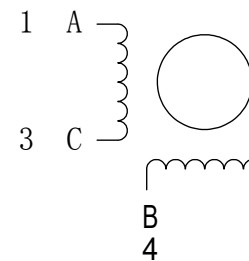


连接器针位vs. 引线颜色
Pin No. vs. Lead Wire Colour

Pin No.	颜色 Colour
1	黑 BLA
3	绿 GRN
4	红 RED
6	蓝 BLU

接线图

Wiring Diagram



励磁顺序 vs. 旋转方向 Exciting Sequence vs. Direction of Rotation

STEP	A	B	C	D
1	+	+	-	-
2	-	+	+	-
3	-	-	+	+
4	+	-	-	+

从安装面看为顺时针方向
Clockwise view from
mounting side

电机标签
Motor label

LEAD SCREW MOTOR
LE174S-T0808-75-AR3-S-150
XXXXXXXX

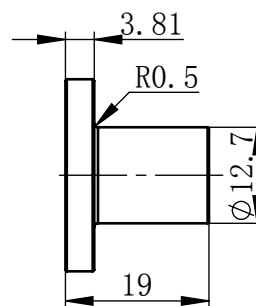
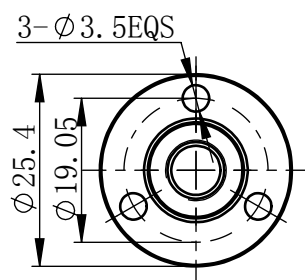
批次号

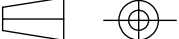


规格 Specifications

1	相数 Number Of Phase	2
2	步长 Linear Travel/Step	0.04 mm (1.8°)
3	额定电压 Rated Voltage	2.625 V DC
4	额定电流 Rated Current	1.5 Amp
5	额定推力 Rated Thrust	42 N(@300rpm, rated current)
6	相电阻 Phase Resistance	1.75 ohm±15% (20℃)
7	相电感 Phase Inductance	2.8 mH±20% (1kHz 1V rms)
8	转子惯量 Rotor Inertia	38 gcm ²
9	重量 Weight	0.21 Kg
10	绝缘等级 Insulation Class	B(130℃)
11	丝杠直径 Screw Diameter	8 mm
12	丝杠导程 Lead	8 mm

版本变更

版本	变更说明	签名	日期
----	------	----	----



<div>未标注线性尺寸和公差 Tolerance for linear and dimensions without individual tolerance indications GB/T 1804-M eqv ISO 2768-1:M</div> <div>未标注形状与位置尺寸公差 Geometrical tolerance for features without individual tolerance indications GB/T 1184-K eqv ISO 2768-2:K</div>	设计 Design	杨淑娟	2018/7/11			上海市闵行区 鸣嘉路168号		
	校核 Check					上海鸣志派博思自动化技术有限公司 (021) 52634688		
	工艺 Process			材料 Material	总图	比例 Scale	零件名 Part Name	直线步进电机
	标准化 Standard					1:1	型号 Model NO.	LE174S-T0808-75-AR3-S-150
<div> I. 请避免螺母脱离丝杠 Keep nut on screw.</div> <div>II. 非专业人士请勿拆解电机 Avoide disassembly without qualification.</div>	批准 Approve			Page 1 of 1	版本 Version	A0	物料号 Material NO.	4611110029476