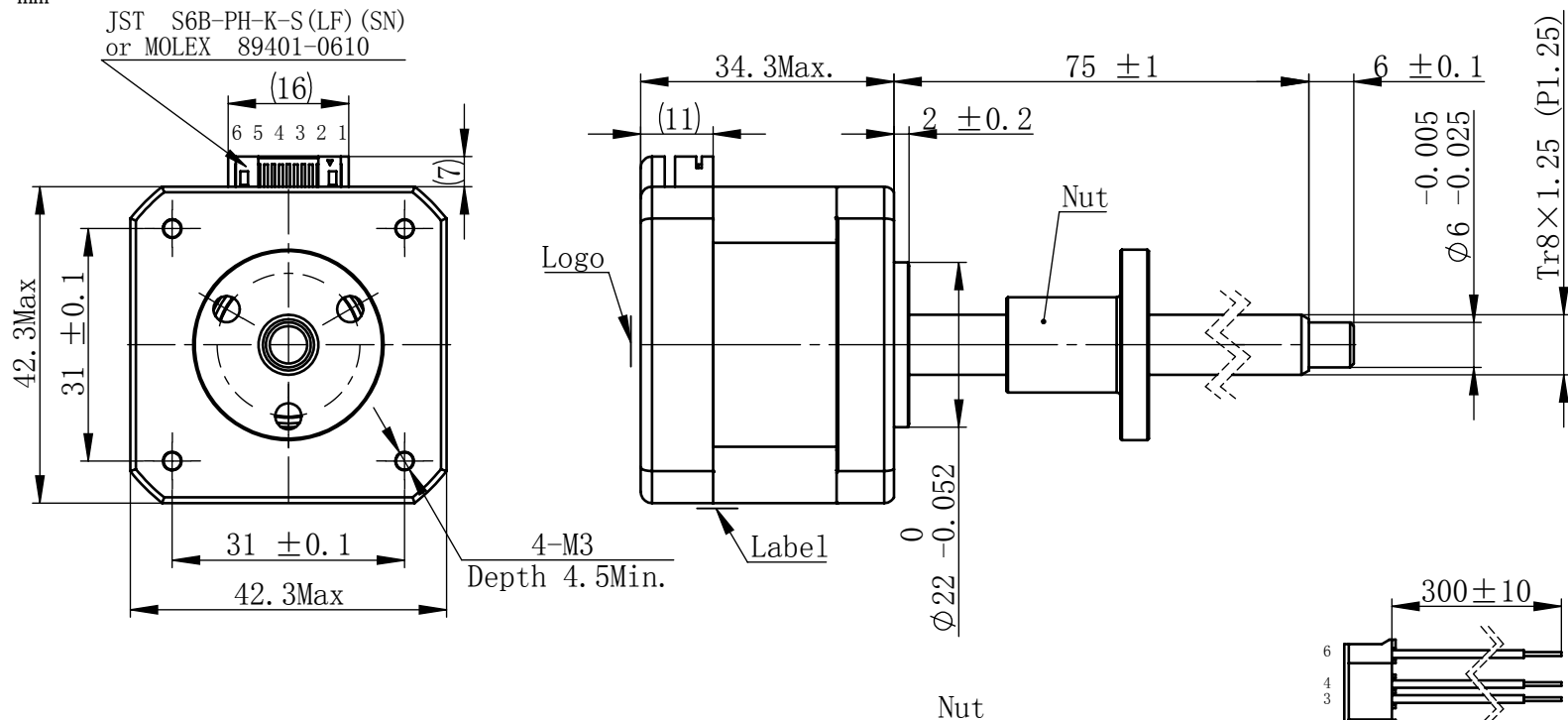


Material NO. 4611110029664

Unit: mm

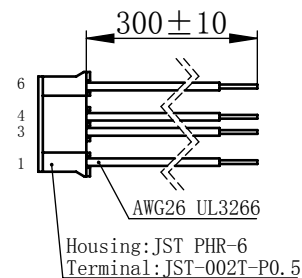
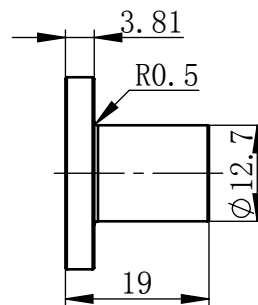
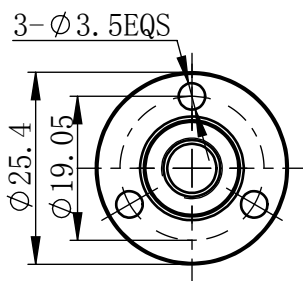


## 规格 Specifications

|    |                       |                                |
|----|-----------------------|--------------------------------|
| 1  | 相数 Number Of Phase    | 2                              |
| 2  | 步长 Linear Travel/Step | 0.00625 mm (1.8°)              |
| 3  | 额定电压 Rated Voltage    | 2.625 V DC                     |
| 4  | 额定电流 Rated Current    | 1.5 Amp                        |
| 5  | 额定推力 Rated Thrust     | 135 N (@300rpm, rated current) |
| 6  | 相电阻 Phase Resistance  | 1.75 ohm ± 15% (20℃)           |
| 7  | 相电感 Phase Inductance  | 2.8 mH ± 20% (1kHz 1V rms)     |
| 8  | 转子惯量 Rotor Inertia    | 38 gcm <sup>2</sup>            |
| 9  | 重量 Weight             | 0.21 Kg                        |
| 10 | 绝缘等级 Insulation Class | B (130℃)                       |
| 11 | 丝杠直径 Screw Diameter   | 8 mm                           |
| 12 | 丝杠导程 Lead             | 1.25 mm                        |

### 版本变更

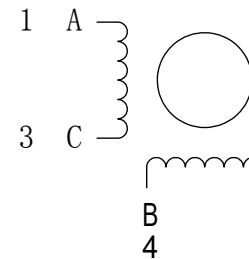
| 版本 | 变更说明 | 签名 | 日期 |
|----|------|----|----|
|----|------|----|----|



连接器针位 vs. 引线颜色  
Pin No. vs. Lead Wire Colour

| Pin No. | 颜色 Colour |
|---------|-----------|
| 1       | 黑 BLA     |
| 3       | 绿 GRN     |
| 4       | 红 RED     |
| 6       | 蓝 BLU     |

## 接线图 Wiring Diagram



励磁顺序 vs. 旋转方向  
Exciting Sequence vs.  
Direction of Rotation

| STEP | A | B | C | D |          |
|------|---|---|---|---|----------|
| 1    | + | + | - | - | CCW<br>↑ |
| 2    | - | + | + | - |          |
| 3    | - | - | + | + |          |
| 4    | + | - | - | + |          |

从安装面看为顺时针方向  
Clockwise view from  
mounting side

电机标签  
Motor label

LEAD SCREW MOTOR  
LE174S-T08012-75-AR3-S-150  
XXXXXXX

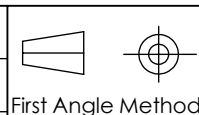
批次号

未标注线性尺寸和公差  
Tolerance for linear and dimensions  
without individual tolerance indications  
GB/T 1804-M eqv ISO 2768-1:M

未标注形状与位置尺寸公差  
Geometrical tolerance for features  
without individual tolerance indications  
GB/T 1184-K eqv ISO 2768-2:K

- I. 请避免螺母脱离丝杠  
Keep nut on screw.
- II. 非专业人士请勿拆解电机  
Avoid disassembly without  
qualification.

|                 |     |           |
|-----------------|-----|-----------|
| 设计<br>Design    | 杨淑娟 | 2018/7/12 |
| 校核<br>Check     |     |           |
| 工艺<br>Process   |     |           |
| 标准化<br>Standard |     |           |
| 批准<br>Approve   |     |           |



材料  
Material

总图

Page 1 of 1

**PBC+MOONS** 上海市闵行区  
鸣嘉路168号  
上海鸣志派博思自动化技术有限公司 (021) 52634688

| 比例<br>Scale | 零件名<br>Part Name    | 直线性进电机                     |
|-------------|---------------------|----------------------------|
| 1:1         | 型号<br>Model NO.     | LE174S-T08012-75-AR3-S-150 |
|             | 物料号<br>Material NO. | 4611110029664              |