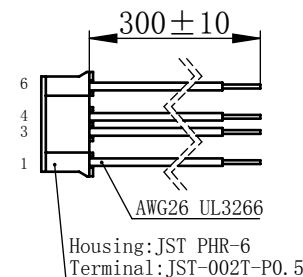
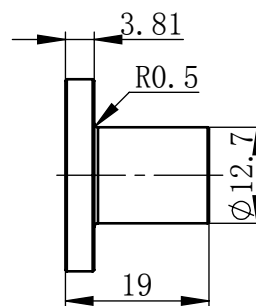
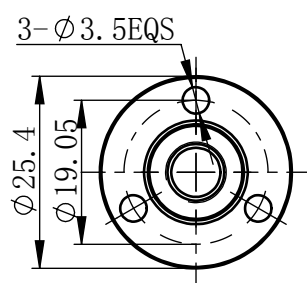
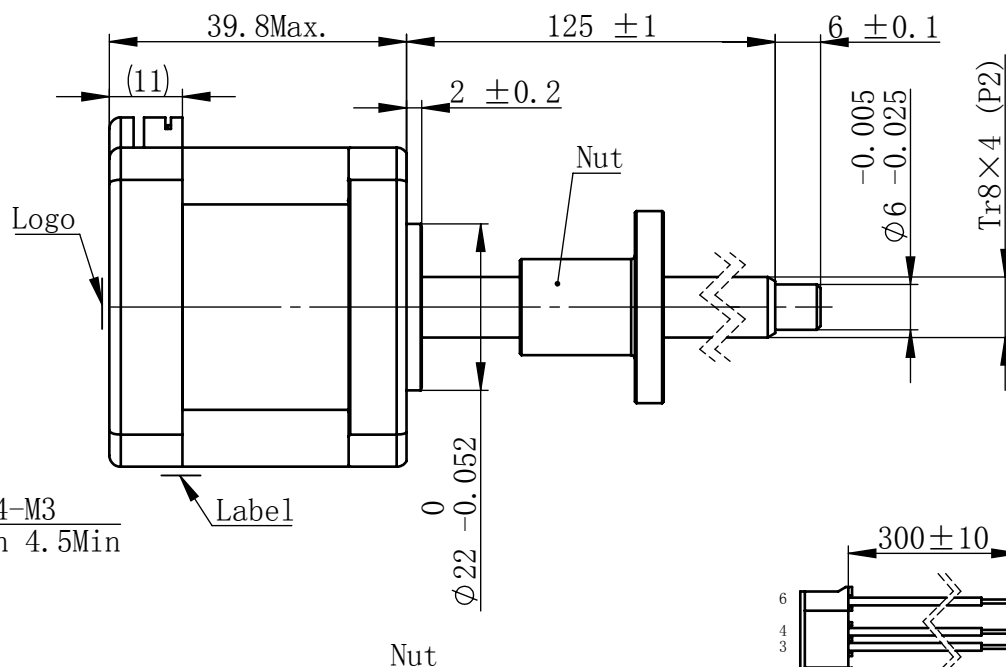
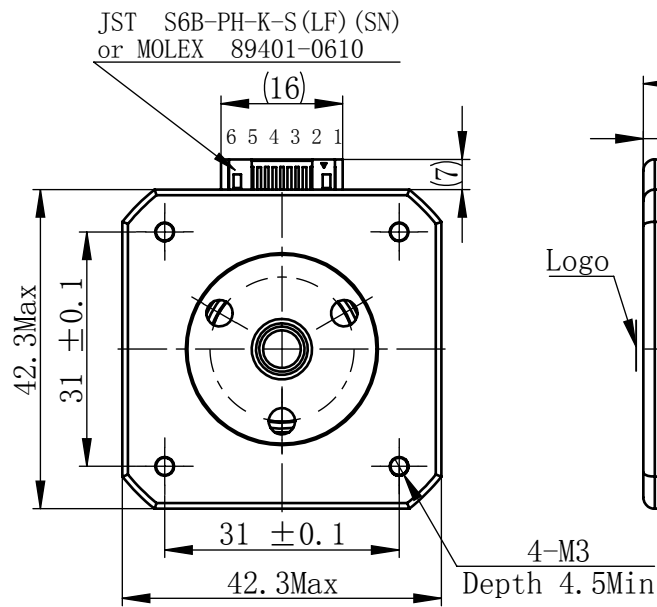


Material NO.

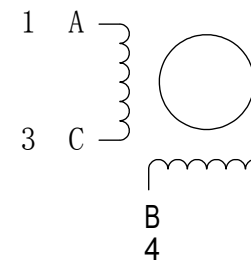
Unit: mm



连接器针位vs. 引线颜色  
Pin No. vs. Lead Wire Colour

Pin No.	颜色 Colour
1	黑 BLA
3	绿 GRN
4	红 RED
6	蓝 BLU

## 接线图 Wiring Diagram



## 励磁顺序 vs. 旋转方向 Exciting Sequence vs. Direction of Rotation

STEP	A	B	C	D
1	+	+	-	-
2	-	+	+	-
3	-	-	+	+
4	+	-	-	+

The diagram shows a 4x4 grid with arrows indicating clockwise (CW) and counter-clockwise (CCW) directions. The grid contains the following values:

STEP	A	B	C	D
1	+	+	-	-
2	-	+	+	-
3	-	-	+	+
4	+	-	-	+

从安装面看为顺时针方向  
Clockwise view from  
mounting side

电机标签  
Motor label

LEAD SCREW MOTOR  
LE172S-T0804-125-AR3-S-100  
XXXXXXXX

批次号

## 规格 Specifications

1	相数 Number Of Phase	2
2	步长 Linear Travel/Step	0.02 mm (1.8° )
3	额定电压Rated Voltage	3.9 V DC
4	额定电流 Rated Current	1 Amp
5	额定推力 Rated Thrust	78 N(@300rpm, rated current)
6	相电阻 Phase Resistance	3.9 ohm±10% (20℃)
7	相电感 Phase Inductance	10.8 mH±20% (1kHz 1V rms)
8	转子惯量 Rotor Inertia	57 gcm <sup>2</sup>
9	重量 Weight	0.28 Kg
10	绝缘等级 Insulation Class	B(130℃)
11	丝杠直径 Screw Diameter	8 mm
12	丝杠导程 Lead	4 mm

## 版本变更

版本	变更说明	签名	日期
----	------	----	----

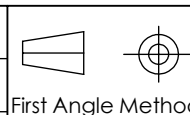
未标注线性尺寸和公差  
Tolerance for linear and dimensions  
without individual tolerance indications  
GB/T 1804-M eqv ISO 2768-1:M

未标注形状与位置尺寸公差  
Geometrical tolerance for features  
without individual tolerance indications  
GB/T 1184-K eqv ISO 2768-2:K



- I. 请避免螺母脱离丝杠  
Keep nut on screw.
- II. 非专业人士请勿拆解电机  
Avoid disassembly without qualification.

设计 Design	杨淑娟	2018/7/1
校核 Check		
工艺 Process		
标准化 Standard		
批准 Approve		



材料 Material	总图
----------------	----

Page 1 of 1

**PBC MOONS'** 上海市闵行区  
鸣嘉路168号  
上海鸣志派博思自动化技术有限公司 (021) 52634688

比例 Scale	零件名 Part Name	直线步进电机
1:1	型号 Model NO.	LE172S-T0804-125-AR3-S-100

物料号 Material NO	4611110029515
--------------------	---------------