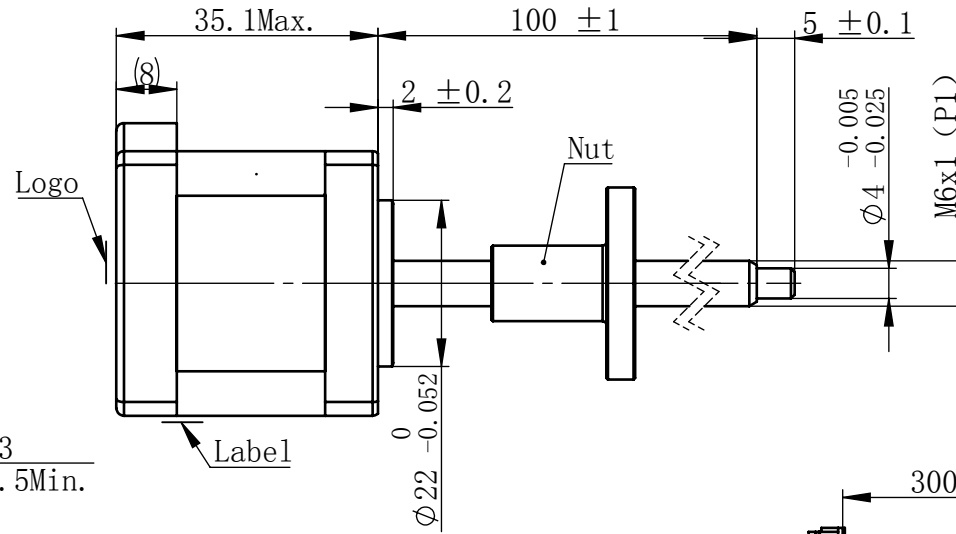
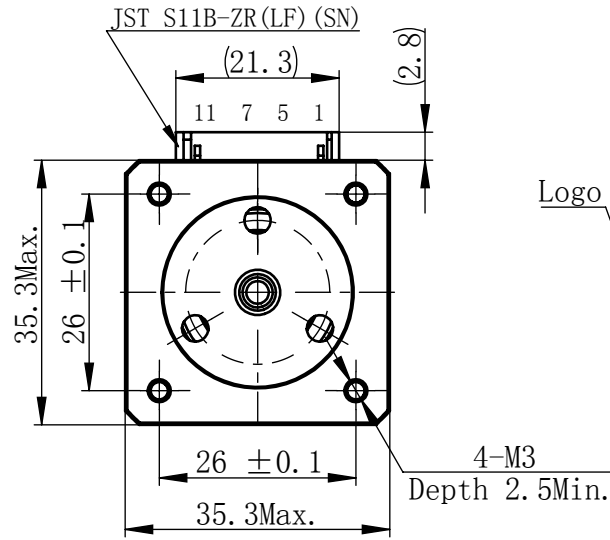
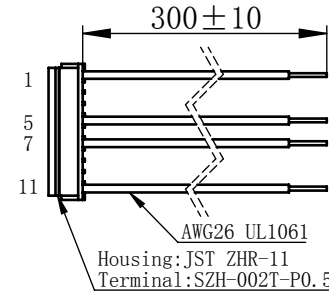
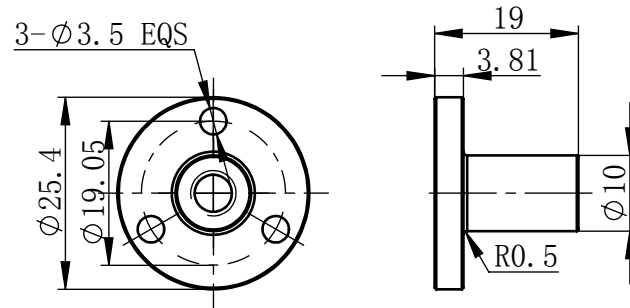


Material NO. 46111110029815

Unit: mm



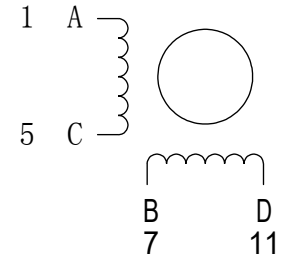
Nut



连接器针位 vs. 引线颜色  
Pin No. vs. Lead Wire Colour

| Pin No. | 颜色 Colour |
|---------|-----------|
| 1       | 黑 BLA     |
| 5       | 绿 GRN     |
| 7       | 红 RED     |
| 11      | 蓝 BLU     |

## 接线图 Wiring Diagram



## 励磁顺序 vs. 旋转方向 Exciting Sequence vs. Direction of Rotation

| STEP | A | B | C | D |
|------|---|---|---|---|
| 1    | + | + | - | - |
| 2    | - | + | + | - |
| 3    | - | - | + | + |
| 4    | + | - | - | + |

从安装面看为顺时针方向  
Clockwise view from mouting side

电机标签  
Motor label

LEAD SCREW MOTOR  
LE143S-W0601-100-AR1-S-150  
XXXXXXX

批次号

备注Note:  
螺纹丝杆及螺母在正常使用过程中,  
若有少许粉尘掉落为正常现象。  
It's normal phenomenon if there is a little dust  
fall off when using the lead screw and nut.

## 规格 Specifications

|    |                       |                                |
|----|-----------------------|--------------------------------|
| 1  | 相数 Number Of Phase    | 2                              |
| 2  | 步长 Linear Travel/Step | 0.005 mm (1.8°)                |
| 3  | 额定电压 Rated Voltage    | 2.4 V DC                       |
| 4  | 额定电流 Rated Current    | 1.5 Amp                        |
| 5  | 额定推力 Rated Thrust     | 125 N (@300rpm, rated current) |
| 6  | 相电阻 Phase Resistance  | 1.61 ohm ± 10% (20°C)          |
| 7  | 相电感 Phase Inductance  | 2.5 mH ± 20% (1kHz 1V rms)     |
| 8  | 转子惯量 Rotor Inertia    | 20 gcm <sup>2</sup>            |
| 9  | 重量 Weight             | 0.21 Kg                        |
| 10 | 绝缘等级 Insulation Class | B (130°C)                      |
| 11 | 丝杠直径 Screw Diameter   | 6 mm                           |
| 12 | 丝杠导程 Lead             | 1 mm                           |

## 版本变更

| 版本 | 变更说明 | 签名 | 日期 |
|----|------|----|----|
|----|------|----|----|

未标注线性尺寸和公差  
Tolerance for linear and dimensions  
without individual tolerance indications  
GB/T 1804-M eqv ISO 2768-1:M

未标注形状与位置尺寸公差  
Geometrical tolerance for features  
without individual tolerance indications  
GB/T 1184-K eqv ISO 2768-2:K

I. 请避免螺母脱离丝杠  
Keep nut on screw.  
II. 非专业人士请勿拆解电机  
Avoid disassembly without  
qualification.

设计  
Design

杨淑娟

校核  
Check

工艺  
Process

标准化  
Standard

批准  
Approve



First Angle Method

材料  
Material

总图

Page 1 of 1

PBC+MOONS'

上海市闵行区  
鸣嘉路168号

上海鸣志派博思自动化技术有限公司 (021) 52634688

比例  
Scale

1:1

零件名  
Part Name

直线步进电机

型号  
Model NO.

LE143S-W0601-100-AR1-S-150

物料号  
Material NO.

4611110029815