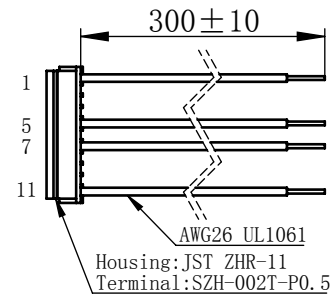
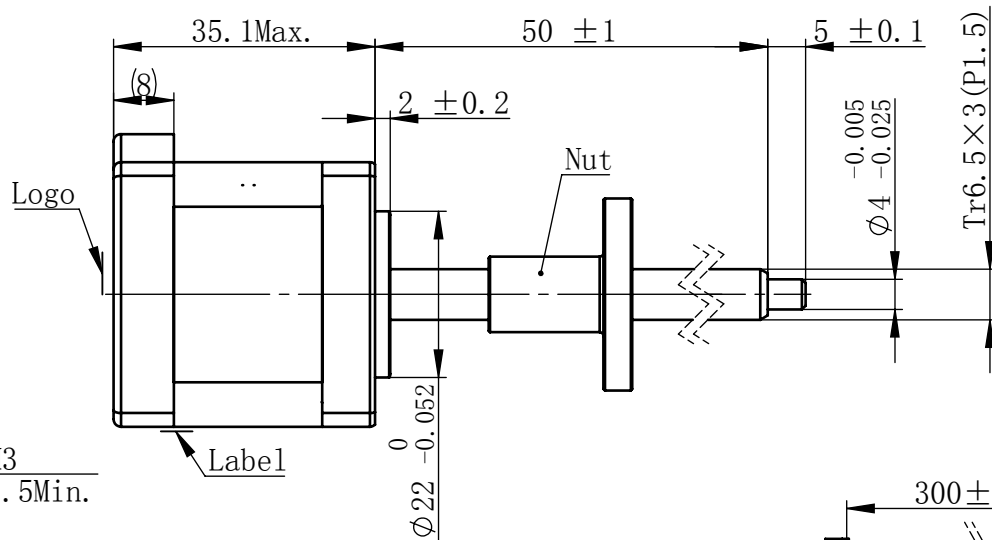
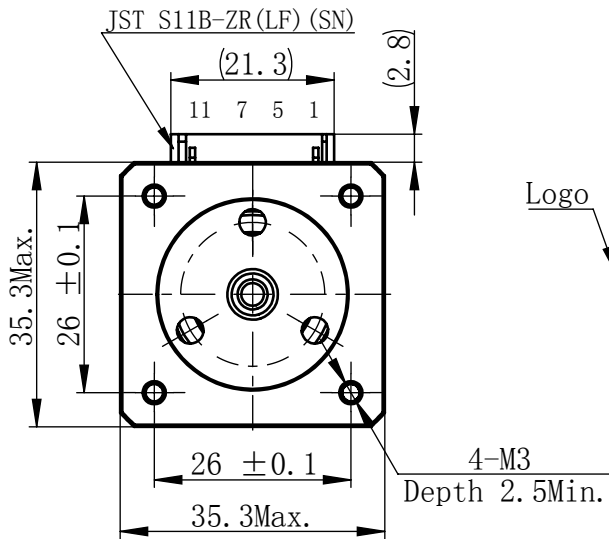


Material NO.

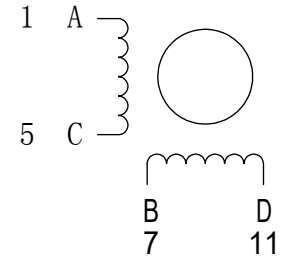
Unit: mm



连接器针位vs. 引线颜色  
Pin No. vs. Lead Wire Colour

| Pin No. | 颜色 Colour |
|---------|-----------|
| 1       | 黑 BLA     |
| 5       | 绿 GRN     |
| 7       | 红 RED     |
| 11      | 蓝 BLU     |

接线图  
Wiring Diagram



## 励磁顺序 vs. 旋转方向 Exciting Sequence vs. Direction of Rotation

| STEP | A | B | C | D |
|------|---|---|---|---|
| 1    | + | + | - | - |
| 2    | - | + | + | - |
| 3    | - | - | + | + |
| 4    | + | - | - | + |

从安装面看为顺时针方向  
Clockwise view from  
mounting side

电机标签  
Motor label

LEAD SCREW MOTOR  
LE143S-T6503-50-AR1-S-050  
XXXXXXX

批次号

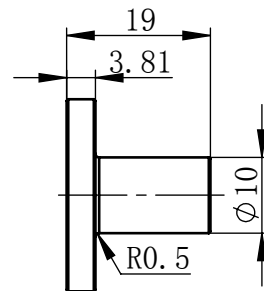
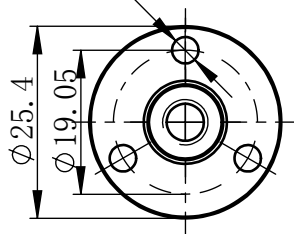
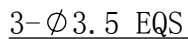
备注Note:  
 螺丝丝杆及螺母在正常使用过程中,  
 若有少许粉尘掉落为正常现象。  
 It's normal phenomenon if there is a little dust  
 fall off when using the lead screw and nut.

## 规格 Specifications

|    |                       |                              |
|----|-----------------------|------------------------------|
| 1  | 相数 Number Of Phase    | 2                            |
| 2  | 步长 Linear Travel/Step | 0.015 mm (1.8° )             |
| 3  | 额定电压Rated Voltage     | 7.55 V DC                    |
| 4  | 额定电流 Rated Current    | 0.5 Amp                      |
| 5  | 额定推力 Rated Thrust     | 40 N(@300rpm, rated current) |
| 6  | 相电阻 Phase Resistance  | 15.1 ohm±10% (20℃)           |
| 7  | 相电感 Phase Inductance  | 25 mH±20% (1kHz 1V rms)      |
| 8  | 转子惯量 Rotor Inertia    | 20 gcm <sup>2</sup>          |
| 9  | 重量 Weight             | 0.21 Kg                      |
| 10 | 绝缘等级 Insulation Class | B(130℃)                      |
| 11 | 丝杠直径 Screw Diameter   | 6.7 mm                       |
| 12 | 丝杠导程 Lead             | 3 mm                         |

## 版本变更

| 版本 | 变更说明 | 签名 | 日期 |
|----|------|----|----|
|----|------|----|----|



未标注线性尺寸和公差  
Tolerance for linear and dimensions  
without individual tolerance indications  
GB/T 1804-M eqv ISO 2768-1:M

未标注形状与位置尺寸公差  
Geometrical tolerance for features  
without individual tolerance indications  
GB/T 1184-K eqv ISO 2768-2:K

- I. 请避免螺母脱离丝杠  
Keep nut on screw.
- II. 非专业人士请勿拆解电机  
Avoid disassembly without qualification.

设计  
Design

杨淑娟

校核  
Check

工艺  
Process

标准化  
Standard

First Angle Method

材料  
Material

Page 1 of 1

**PBC MOONS'** 上海市闵行区  
鸣嘉路168号  
上海鸣志派博思自动化技术有限公司 (021) 52634688

|  |             |                  |                           |
|--|-------------|------------------|---------------------------|
|  | 比例<br>Scale | 零件名<br>Part Name | 直线步进电机                    |
|  | 1:1         | 型号<br>Model NO.  | LE143S-T6503-50-AR1-S-050 |

|               |    |                     |               |
|---------------|----|---------------------|---------------|
| 版本<br>Version | A0 | 物料号<br>Material NO. | 4611110029795 |
|---------------|----|---------------------|---------------|