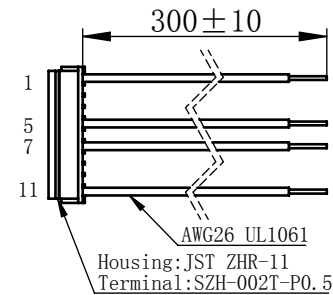
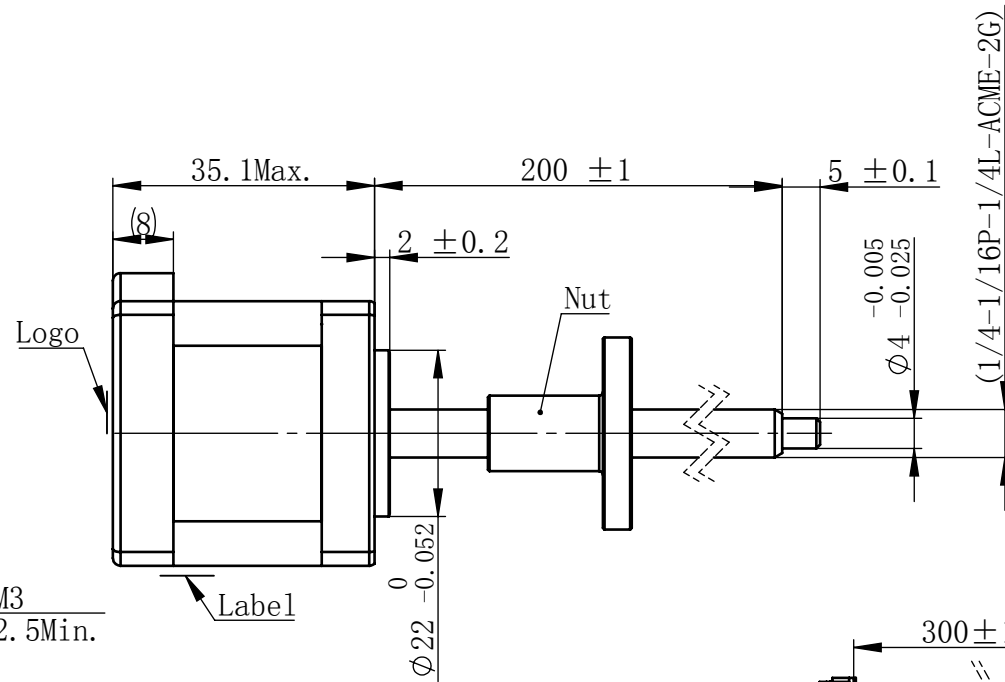
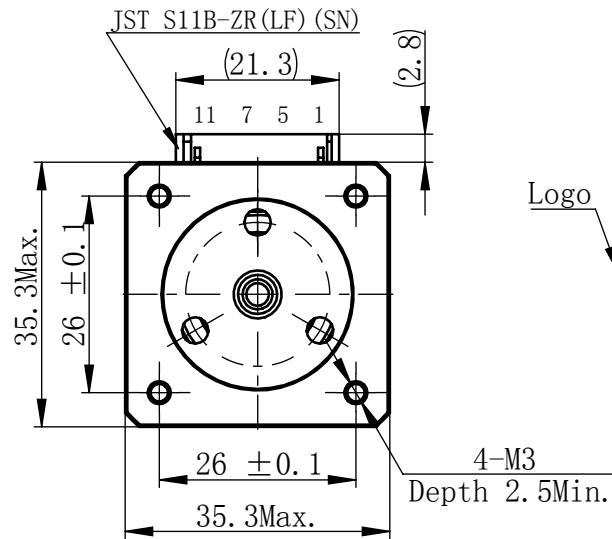


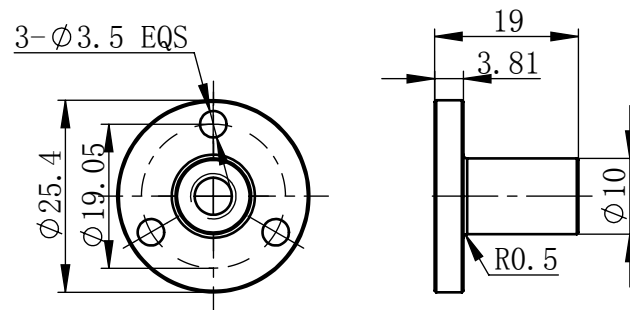
Material NO.

Unit: mm



连接器针位vs. 引线颜色  
Pin No. vs. Lead Wire Colour

Pin No.	颜色 Colour
1	黑 BLA
5	绿 GRN
7	红 RED
11	蓝 BLU



1	相数 Number Of Phase	2
2	步长 Linear Travel/Step	0.03175 mm (1.8° )
3	额定电压Rated Voltage	7.55 V DC
4	额定电流 Rated Current	0.5 Amp
5	额定推力 Rated Thrust	23 N(@300rpm, rated current)
6	相电阻 Phase Resistance	15.1 ohm±10% (20℃)
7	相电感 Phase Inductance	25 mH±20% (1kHz 1V rms)
8	转子惯量 Rotor Inertia	20 gcm <sup>2</sup>
9	重量 Weight	0.21 Kg
10	绝缘等级 Insulation Class	B(130℃)
11	丝杠直径 Screw Diameter	6.35 mm
12	丝杠导程 Lead	6.35 mm

## 版本变更

版本	变更说明	签名	日期
----	------	----	----

未标注线性尺寸和公差  
Tolerance for linear and dimensions  
without individual tolerance indications  
GB/T 1804-M eqv ISO 2768-1:M

未标注形状与位置尺寸公差  
Geometrical tolerance for features  
without individual tolerance indications  
GB/T 1184-K eqv ISO 2768-2:K



- I. 请避免螺母脱离丝杠  
Keep nut on screw.
- II. 非专业人士请勿拆解电机  
Avoid disassembly without qualification.

设计  
Design

杨淑娟

校核  
Check

工艺  
Process

标准化  
Standard

### First Angle Method

材料	Material
----	----------

总图

Page 1 of 1

**PBC+MOONS'** 上海市闵行区  
鸣嘉路168号

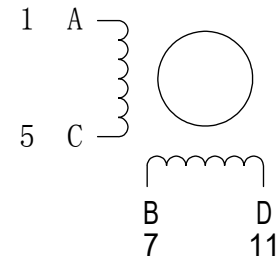
上海鸣志派博思自动化技术有限公司 (021)52634688

比例 Scale	零件名 Part Name	直线步进电机
-------------	------------------	--------

1:1	型号 Model NO.	LE143S-E06063-200-AR1-S-050
-----	-----------------	-----------------------------

A0	物料号 Material NO	4611110029555
----	--------------------	---------------

接线图  
Wiring Diagram



## 励磁顺序 vs. 旋转方向 Exciting Sequence vs. Direction of Rotation

STEP	A	B	C	D
1	+	+	-	-
2	-	+	+	-
3	-	-	+	+
4	+	-	-	+

CW 从安装面看为顺时针方向  
Clockwise view from  
mounting side

电机标签  
Motor label

LEAD SCREW MOTOR  
LE143S-E06063-200-AR1-S-050  
XXXXXXXX

批次号

备注Note:  
 螺纹丝杆及螺母在正常使用过程中,  
 若有少许粉尘掉落为正常现象。  
 It's normal phenomenon if there is a little dust  
 fall off when using the lead screw and nut.