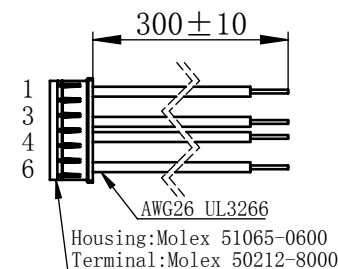
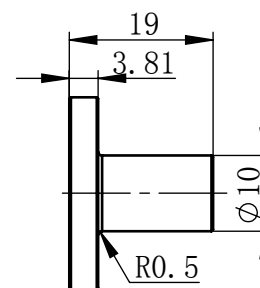
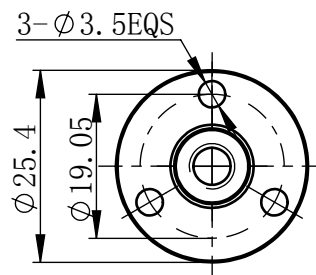
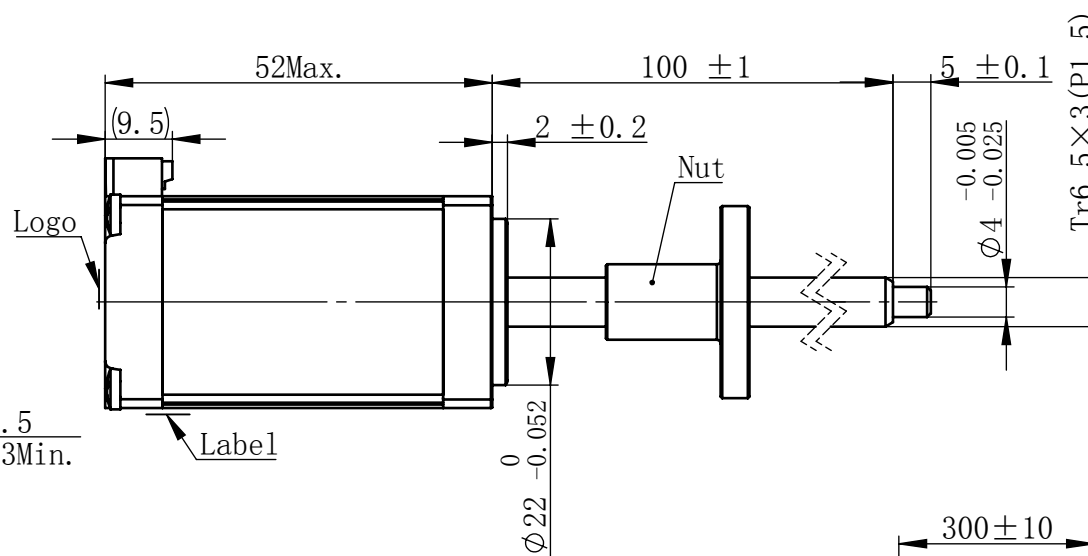
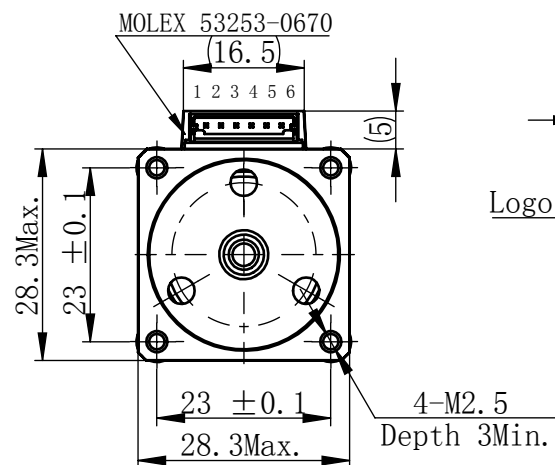
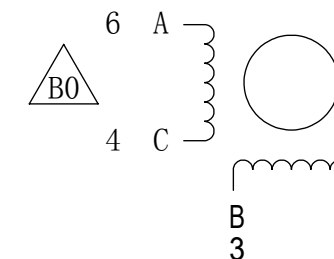


Material NO.

Unit: mm



Pin No.	颜色 Colour
1	黑 BLA
3	绿 GRN
4	红 RED
6	蓝 BLU



励磁顺序 vs. 旋转方向 Exciting Sequence vs. Direction of Rotation

STEP	A	B	C	D
1	+	+	-	-
2	-	+	+	-
3	-	-	+	+
4	+	-	-	+

CW 从安装面看为顺时针方向
Clockwise view from
mounting side

电机标签
Motor label

LEAD SCREW MOTOR
LE115S-T6503-100-AR1-S-100
XXXXXXXX

批次号

备注Note:
 螺丝丝杆及螺母在正常使用过程中,
 若有少许粉尘掉落为正常现象。
 It's normal phenomenon if there is a little dust
 fall off when using the lead screw and nut.

1	相数 Number Of Phase	2
2	步长 Linear Travel/Step	0.015 mm (1.8°)
3	额定电压Rated Voltage	3.7 V DC
4	额定电流 Rated Current	1 Amp
5	额定推力 Rated Thrust	46 N(@300rpm, rated current)
6	相电阻 Phase Resistance	3.7 ohm±10% (20℃)
7	相电感 Phase Inductance	3.1 mH±20% (1kHz 1V rms)
8	转子惯量 Rotor Inertia	18 gcm ²
9	重量 Weight	0.2 Kg
10	绝缘等级 Insulation Class	B(130℃)
11	丝杠直径 Screw Diameter	6.7 mm
12	丝杠导程 Lead	3 mm

版本变更			
版本	变更说明	签名	日期
B0	更改接线图序号，原1346	杨淑娟	2018/10/31

<div>未标注线性尺寸和公差 Tolerance for linear and dimensions without individual tolerance indications GB/T 1804-M eqv ISO 2768-1:M</div> <div>未标注形状与位置尺寸公差 Geometrical tolerance for features without individual tolerance indications GB/T 1184-K eqv ISO 2768-2:K</div> <div><div><div><div></div><div></div></div><div>I. 请避免螺母脱离丝杠 Keep nut on screw.</div><div>II. 非专业人士请勿拆解电机 Avoide disassembly without qualification.</div></div></div>	设计 Design	杨淑娟	2018/10/31	<div><div></div><div></div></div> <div>First Angle Method</div>	<div><div>PBC+MOONS'</div><div>上海市闵行区 鸣嘉路168号</div></div> <div>上海鸣志派博思自动化技术有限公司 (021)52634688</div>		
	校核 Check				<div>材料 Material</div> <div>总图</div>	比例 Scale	零件名 Part Name
	工艺 Process			1:1		型号 Model NO.	LE115S-T6503-100-AR1-S-100
	批准 Approve			Page 1 of 1		版本 Version	B0