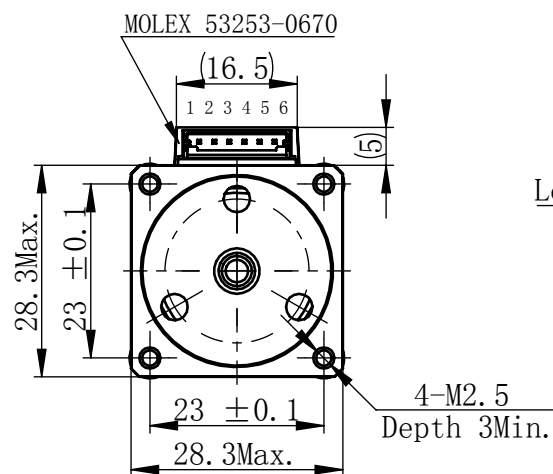


0Z6Z0Z110029570

Material NO. 46111110029570

Unit: mm

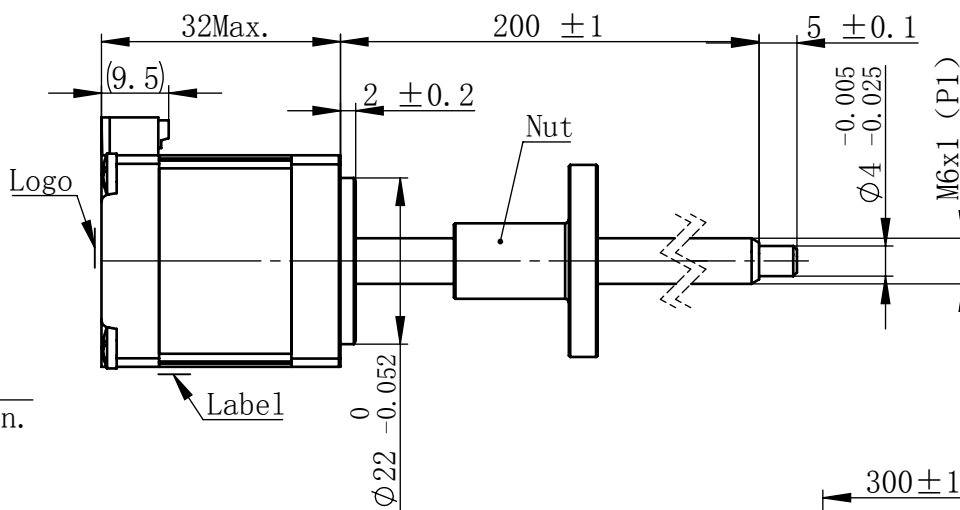


规格 Specifications

1	相数 Number Of Phase	2
2	步长 Linear Travel/Step	0.005 mm (1.8°)
3	额定电压 Rated Voltage	5.5 V DC
4	额定电流 Rated Current	0.5 Amp
5	额定推力 Rated Thrust	47 N(@300rpm, rated current)
6	相电阻 Phase Resistance	10.9 ohm ±10% (20℃)
7	相电感 Phase Inductance	9.7 mH ±20% (1kHz 1V rms)
8	转子惯量 Rotor Inertia	9 gcm ²
9	重量 Weight	0.1 Kg
10	绝缘等级 Insulation Class	B(130℃)
11	丝杠直径 Screw Diameter	6 mm
12	丝杠导程 Lead	1 mm

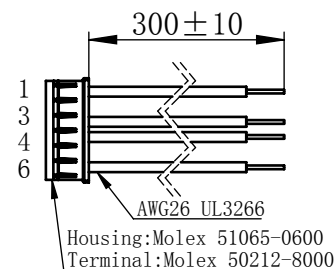
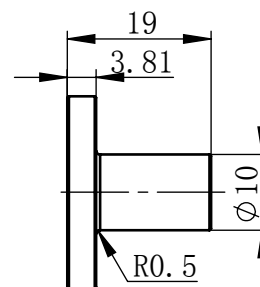
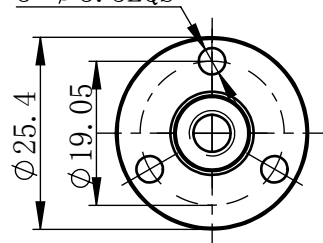
版本变更

版本	变更说明	签名	日期
B0	更改接线图序号, 原1346	杨淑娟	2018/10/31



Nut

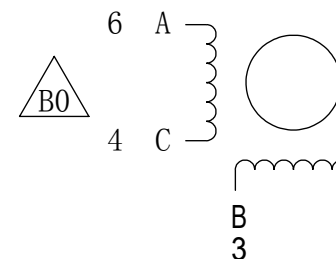
3-Φ3.5EQS



连接器针位vs. 引线颜色
Pin No. vs. Lead Wire Colour

Pin No.	颜色 Colour
1	黑 BLA
3	绿 GRN
4	红 RED
6	蓝 BLU

接线图 Wiring Diagram



励磁顺序 vs. 旋转方向 Exciting Sequence vs. Direction of Rotation

STEP	A	B	C	D
1	+	+	-	-
2	-	+	+	-
3	-	-	+	+
4	+	-	-	+

CW
从安装面看为顺时针方向
Clockwise view from
mounting side

电机标签 Motor label

LEAD SCREW MOTOR
LE111S-W0601-200-AR1-S-050
XXXXXXXX

批次号

备注Note:
螺纹丝杆及螺母在正常使用过程中,
若有少许粉尘掉落为正常现象。
It's normal phenomenon if there is a little dust
fall off when using the lead screw and nut.

未标注线性尺寸和公差
Tolerance for linear and dimensions
without individual tolerance indications
GB/T 1804-M eqv ISO 2768-1:M

未标注形状与位置尺寸公差
Geometrical tolerance for features
without individual tolerance indications
GB/T 1184-K eqv ISO 2768-2:K

I. 请避免螺母脱离丝杠
Keep nut on screw.

II. 非专业人士请勿拆解电机
Avoid disassembly without
qualification.

设计
Design

杨淑娟

2018/10/31

校核
Check工艺
Process标准化
Standard批准
Approve材料
Material

总图

First Angle Method

Page 1 of 1

版本
Version比例
Scale零件名
Part Name

1:1

型号
Model NO.物料号
Material NO.

PBC+MOONS' 上海市闵行区
鸣嘉路168号

上海鸣志派博思自动化技术有限公司 (021)52634688

直线步进电机

LE111S-W0601-200-AR1-S-050

4611110029570