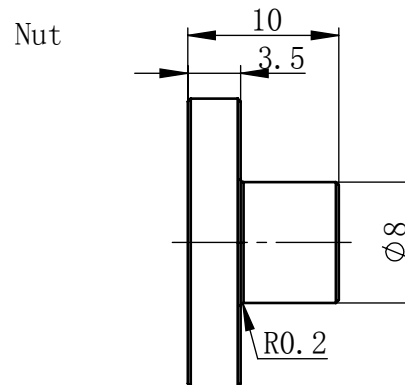
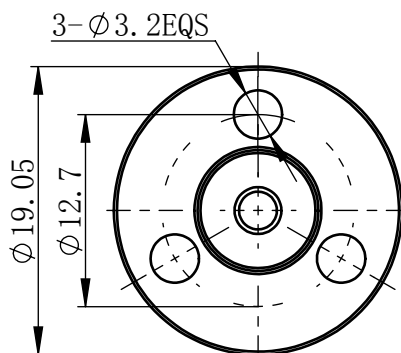
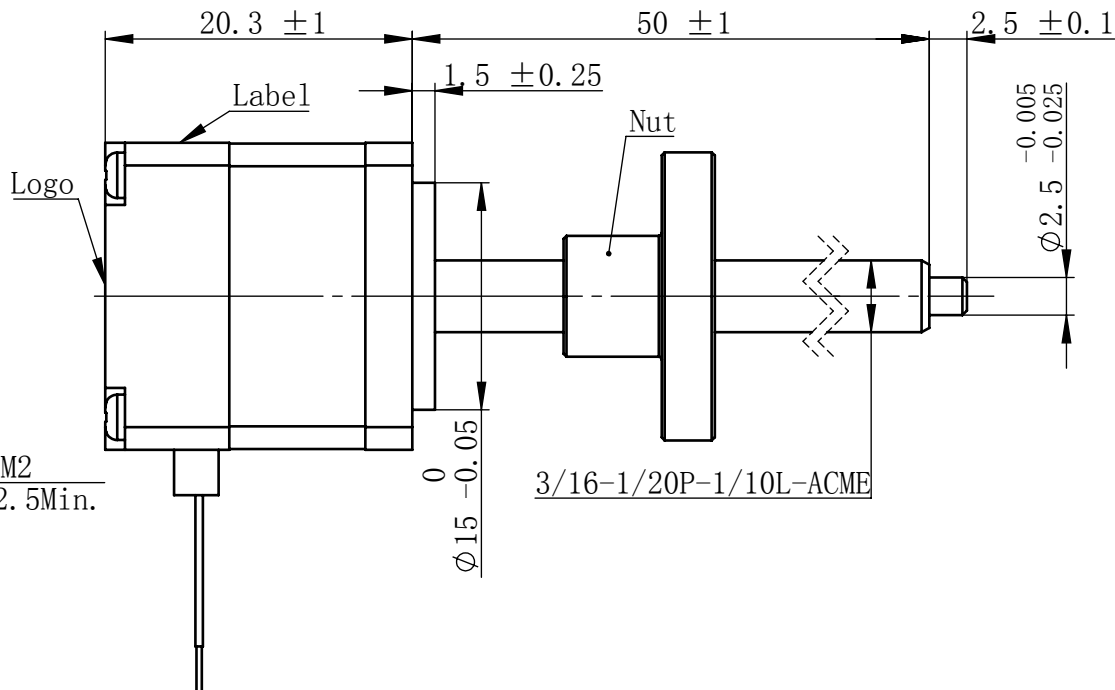
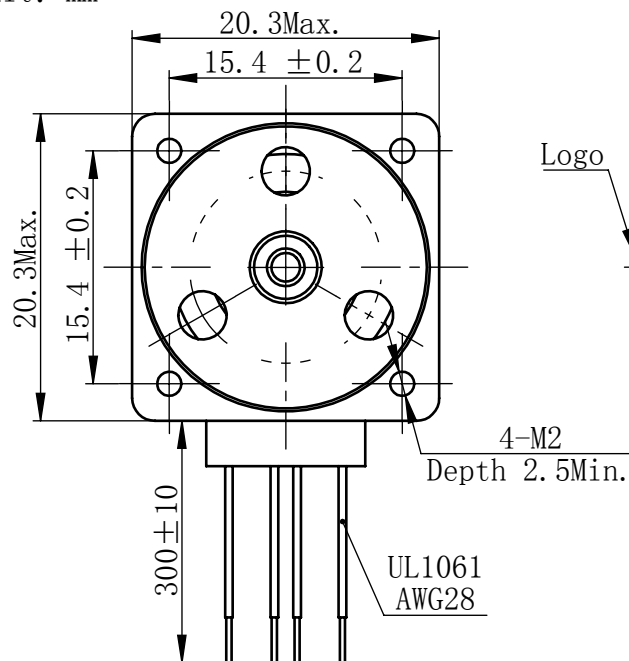
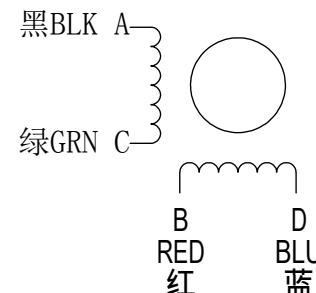


物料号  
Material NO. 4611110029872

Unit: mm



## 接线图 Wiring Diagram



励磁顺序 vs. 旋转方向  
Exciting Sequence vs. Direction of Rotation

| STEP | A | B | C | D |
|------|---|---|---|---|
| 1    | + | + | - | - |
| 2    | - | + | + | - |
| 3    | - | - | + | + |
| 4    | + | - | - | + |

从安装面看为顺时针方向  
Clockwise view from mouting side

电机标签  
Motor Label

LEAD SCREW MOTOR  
LE080K-E04025-50-AR0-S-040  
XXXXXXXX

批次号

备注Note:  
螺纹丝杆及螺母在正常使用过程中,  
若有少许粉尘掉落为正常现象。  
It's normal phenomenon if there is a little dust  
fall off when using the lead screw and nut.

## 规格 Specifications

|    |                       |                             |
|----|-----------------------|-----------------------------|
| 1  | 相数 Number Of Phase    | 2                           |
| 2  | 步长 Linear Travel/Step | 0.0127 mm (1.8°)            |
| 3  | 额定电压Rated Voltage     | 3.4 V DC                    |
| 4  | 额定电流 Rated Current    | 0.4 Amp                     |
| 5  | 额定推力 Rated Thrust     | 3 N(@300rpm, rated current) |
| 6  | 相电阻 Phase Resistance  | 8.5 ohm ± 10% (20°C)        |
| 7  | 相电感 Phase Inductance  | 2.7 mH ± 20% (1kHz 1V rms)  |
| 8  | 转子惯量 Rotor Inertia    | 25 gcm <sup>2</sup>         |
| 9  | 重量 Weight             | 0.05 Kg                     |
| 10 | 绝缘等级 Insulation Class | B(130°C)                    |
| 11 | 丝杠直径 Screw Diameter   | 4.76 mm                     |
| 12 | 丝杠导程 Lead             | 2.54 mm                     |

版本变更

| 版本 | 变更说明 | 签名 | 日期 |
|----|------|----|----|
|----|------|----|----|

未标注线性尺寸和公差  
Tolerance for linear and dimensions  
without individual tolerance indications  
GB/T 1804-M eqv ISO 2768-1:M

未标注形状与位置尺寸公差  
Geometrical tolerance for features  
without individual tolerance indications  
GB/T 1184-K eqv ISO 2768-2:K

I. 请避免螺母脱离丝杠  
Keep nut on screw.  
II. 非专业人士请勿拆解电机  
Avoid disassembly without  
qualification.

|                 |     |           |
|-----------------|-----|-----------|
| 设计<br>Design    | 张明生 | 2018/7/18 |
| 校核<br>Check     |     |           |
| 工艺<br>Process   |     |           |
| 标准化<br>Standard |     |           |
| 批准<br>Approve   |     |           |

|                |                  |
|----------------|------------------|
| 材料<br>Material | 总图               |
| Page 1 of 1    | 版本<br>Version A0 |

|  |                                   |
|--|-----------------------------------|
| PBC+MOONS                                  | 上海市闵行区<br>鸣嘉路168号                 |
| 上海鸣志派博思自动化技术有限公司                           | (021) 52634688                    |
| 比例<br>Scale 2:1                            | 零件名<br>Part Name 直线步进电机           |
| 型号<br>Model NO. LE080K-E04025-50-AR0-S-040 | 物料号<br>Material NO. 4611110029872 |