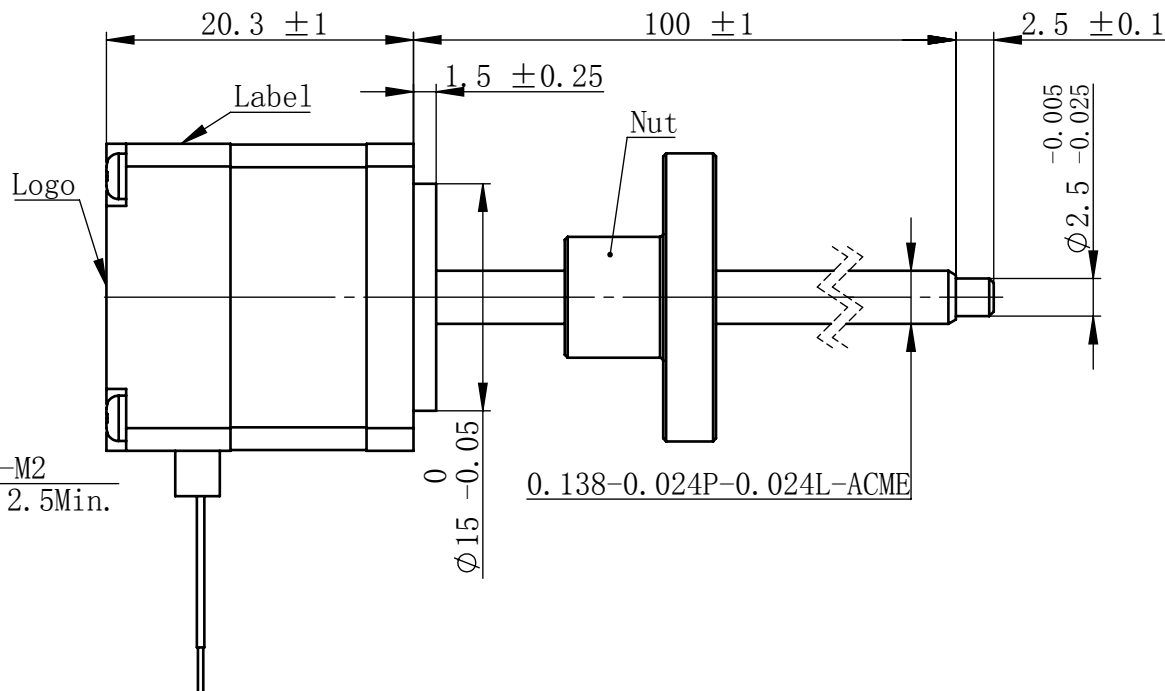
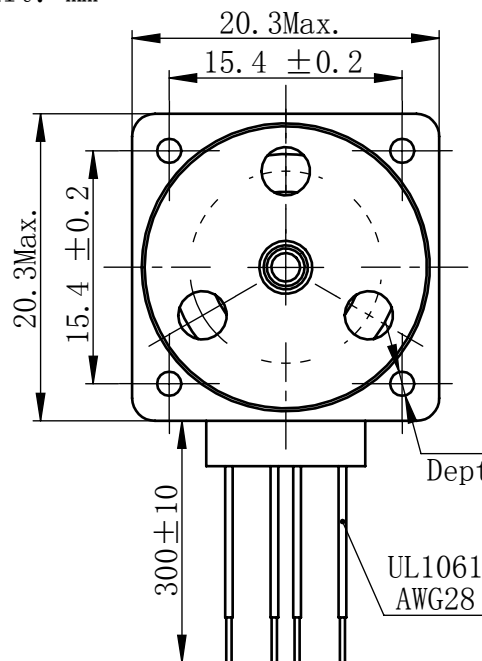


物料号  
Material NO. 4611110029875

Unit: mm

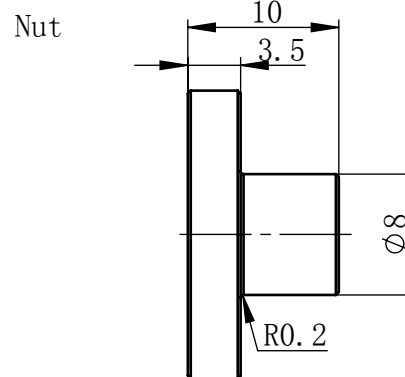
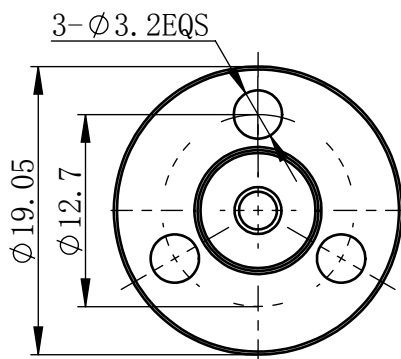


## 规格 Specifications

1	相数 Number Of Phase	2
2	步长 Linear Travel/Step	0.003048 mm (1.8°)
3	额定电压 Rated Voltage	3.4 V DC
4	额定电流 Rated Current	0.4 Amp
5	额定推力 Rated Thrust	6 N (@300rpm, rated current)
6	相电阻 Phase Resistance	8.5 ohm ± 10% (20°C)
7	相电感 Phase Inductance	2.7 mH ± 20% (1kHz 1V rms)
8	转子惯量 Rotor Inertia	25 gcm <sup>2</sup>
9	重量 Weight	0.05 Kg
10	绝缘等级 Insulation Class	B (130°C)
11	丝杠直径 Screw Diameter	3.505 mm
12	丝杠导程 Lead	0.6096 mm

## 版本变更

版本	变更说明	签名	日期
----	------	----	----



未标注线性尺寸和公差  
Tolerance for linear and dimensions  
without individual tolerance indications  
GB/T 1804-M eqv ISO 2768-1:M

未标注形状与位置尺寸公差  
Geometrical tolerance for features  
without individual tolerance indications  
GB/T 1184-K eqv ISO 2768-2:K



I. 请避免螺母脱离丝杠  
Keep nut on screw.

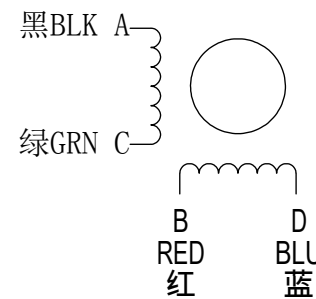
II. 非专业人士请勿拆解电机  
Avoid disassembly without  
qualification.

设计 Design	杨淑娟	2018/7/19
校核 Check		
工艺 Process		
标准化 Standard		
批准 Approve		

材料 Material	总图
Page 1 of 1	版本 Version A0

PBC+MOONS' 上海市闵行区 鸣嘉路168号	
上海鸣志派博思自动化技术有限公司 (021) 52634688	
比例 Scale 2:1	零件名 Part Name 直线步进电机
型号 Model NO. LE080K-E03006-100-AR0-S-040	物料号 Material NO. 4611110029875

## 接线图 Wiring Diagram



## 励磁顺序 vs. 旋转方向 Exciting Sequence vs. Direction of Rotation

STEP	A	B	C	D
1	+	+	-	-
2	-	+	+	-
3	-	-	+	+
4	+	-	-	+

从安装面看为顺时针方向  
Clockwise view from  
mounting side

## 电机标签 Motor Label

LEAD SCREW MOTOR  
LE080K-E03006-100-AR0-S-040  
XXXXXXXX

批次号

备注Note:  
螺纹丝杆及螺母在正常使用过程中,  
若有少许粉尘掉落为正常现象。  
It's normal phenomenon if there is a little dust  
fall off when using the lead screw and nut.