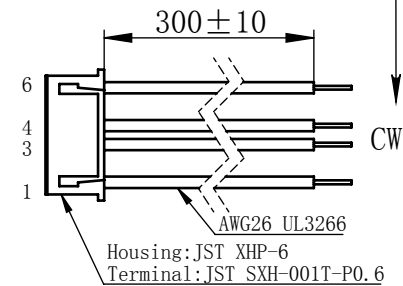
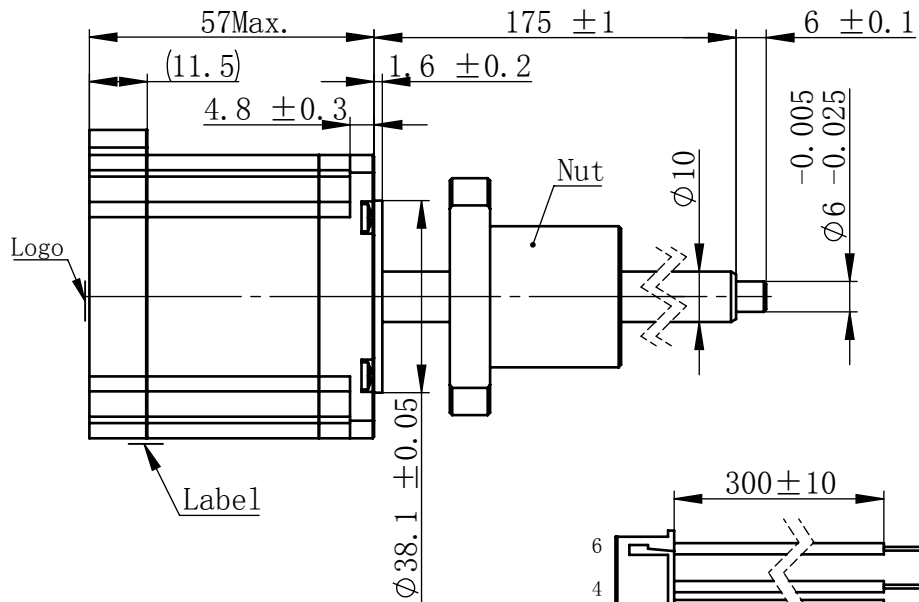
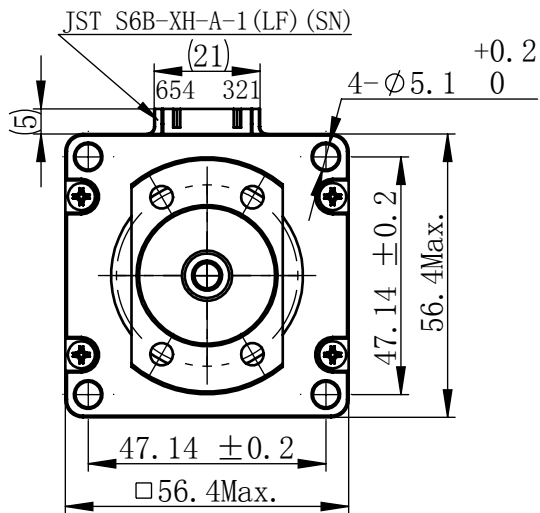


Material NO.

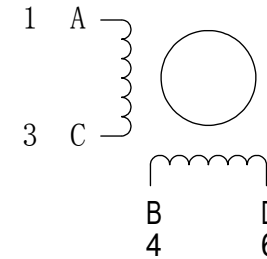
Unit: mm



连接器针位vs. 引线颜色  
Pin No. vs. Lead Wire Colour

Pin No.	颜色 Colour
1	黑 BLK
3	绿 GRN
4	红 RED
6	蓝 BLU

接线图  
Wiring Diagram



## 励磁顺序 vs. 旋转方向 Exciting Sequence vs. Direction of Rotation

STEP	A	B	C	D
1	+	+	-	-
2	-	+	+	-
3	-	-	+	+
4	+	-	-	+

从安装面看为顺时针方向  
Clockwise view from  
mounting side

电机标签  
Motor label

BALL SCREW MOTOR  
BE238S-B1010-175-BM1-S-220  
XXXXXXXX

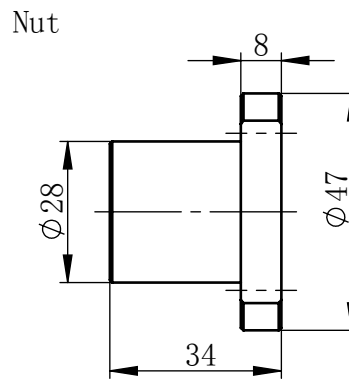
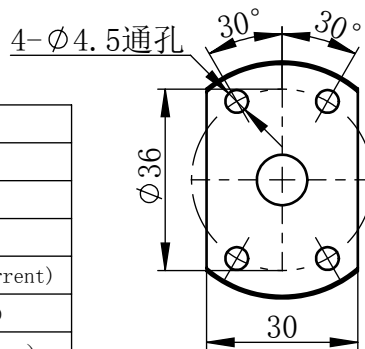
批次号

## 规格 Specifications

1	相数 Number Of Phase	2
2	步长 Linear Travel/Step	0.05 mm (1.8° )
3	额定电压Rated Voltage	3.5 V DC
4	额定电流 Rated Current	2.2 Amp
5	额定推力 Rated Thrust	122 N(@300rpm, rated current)
6	相电阻 Phase Resistance	1.6 ohm $\pm$ 10% (20℃)
7	相电感 Phase Inductance	7.2 mH $\pm$ 20% (1kHz 1V rms)
8	转子惯量 Rotor Inertia	260 gcm <sup>2</sup>
9	重量 Weight	0.6 Kg
10	绝缘等级 Insulation Class	B(130℃)
11	丝杠直径 Screw Diameter	10 mm
12	丝杠导程 Lead	10 mm

## 版本变更

版本	变更说明	签名	日期
----	------	----	----



未标注线性尺寸和公差  
Tolerance for linear and dimensions  
without individual tolerance indications  
GB/T 1804-M eqv ISO 2768-1:M

未标注形状与位置尺寸公差  
Geometrical tolerance for features  
without individual tolerance indications  
GB/T 1184-K eqv ISO 2768-2:K

l. 请避免螺母脱离丝。  
Keep nut on screw.

II. 非专业人士请勿拆解电机  
 Avoid disassembly without  
 qualification.

设计  
Design

杨御旭

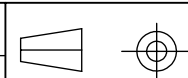
2019/4/17

校核  
Check

## 工艺

标准化  
Standard

批准  
Approve



### First Angle Method

材料  
Material

总图

Page 1 of 1

**PBC MOONS'** 上海市闵行区  
鸣嘉路168号  
上海鸣志派博思自动化技术有限公司 (021) 52634688

比例	Sample
----	--------

零件名

型号 Model NO.	
-----------------	--

物料号  
Material NO

直线步进电机

BE238S-B1010-175-BM1-S-220

4611110032946