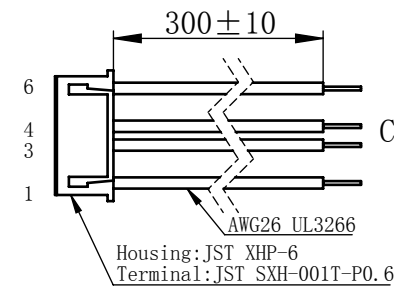
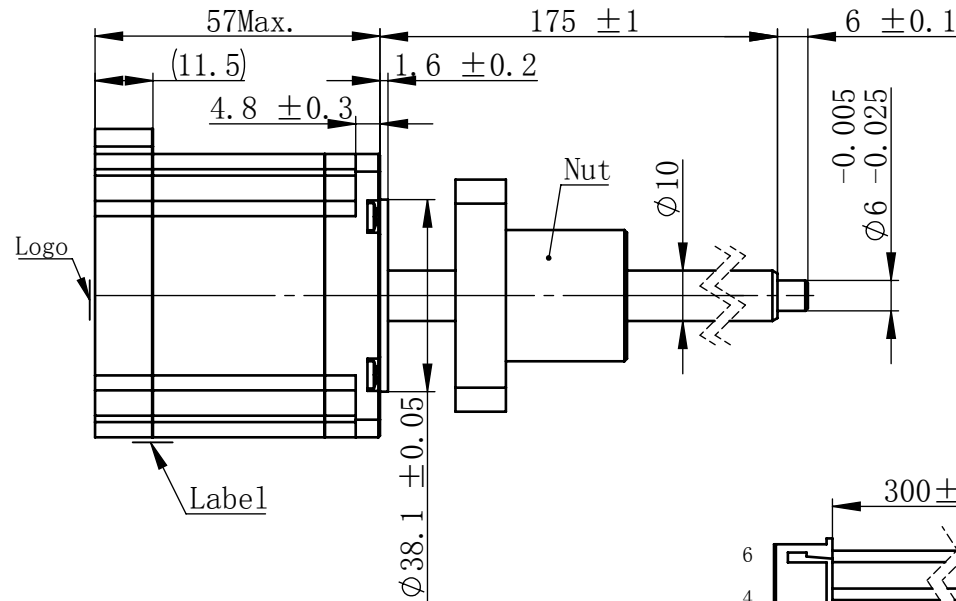
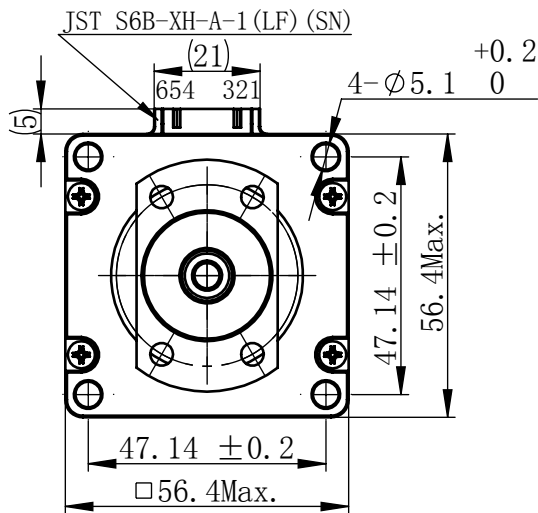


Material NO.

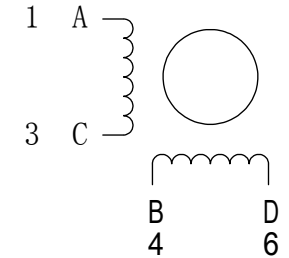
Unit: mm



连接器针位vs. 引线颜色  
Pin No. vs. Lead Wire Colour

Pin No.	颜色 Colour
1	黑 BLK
3	绿 GRN
4	红 RED
6	蓝 BLU

接线图  
Wiring Diagram



励磁顺序 vs. 旋转方向  
Exciting Sequence vs.  
Direction of Rotation

STEP	A	B	C	D
1	+	+	-	-
2	-	+	+	-
3	-	-	+	+
4	+	-	-	+

从安装面看为顺时针方向  
Clockwise view from  
mounting side

电机标签  
Motor label

BALL SCREW MOTOR  
BE238S-B1004-175-AK2-S-220  
XXXXXXXX

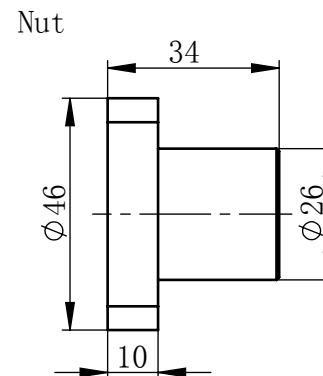
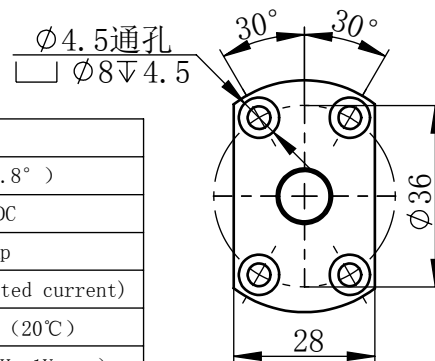
批次号

## 规格 Specifications

1	相数 Number Of Phase	2
2	步长 Linear Travel/Step	0.02 mm (1.8°)
3	额定电压 Rated Voltage	3.5 V DC
4	额定电流 Rated Current	2.2 Amp
5	额定推力 Rated Thrust	304 N (@300rpm, rated current)
6	相电阻 Phase Resistance	1.6 ohm $\pm$ 10% (20°C)
7	相电感 Phase Inductance	7.2 mH $\pm$ 20% (1kHz 1V rms)
8	转子惯量 Rotor Inertia	260 gcm <sup>2</sup>
9	重量 Weight	0.6 Kg
10	绝缘等级 Insulation Class	B(130°C)
11	丝杠直径 Screw Diameter	10 mm
12	丝杠导程 Lead	4 mm


## 版本变更

版本	变更说明	签名	日期
----	------	----	----




未标注线性尺寸和公差  
Tolerance for linear and dimensions  
without individual tolerance indications  
GB/T 1804-M eqv ISO 2768-1:M

未标注形状与位置尺寸公差  
Geometrical tolerance for features  
without individual tolerance indications  
GB/T 1184-K eqv ISO 2768-2:K



- I. 请避免螺母脱离丝杠  
Keep nut on screw.
- II. 非专业人士请勿拆解电机  
Avoid disassembly without qualification.

设计 Design	杨淑娟	2019/4/17
校核 Check		
工艺 Process		
标准化 Standard		
批准 Approve		

7		First Angle Method
	材料 Material	总图
	Page 1 of 1	