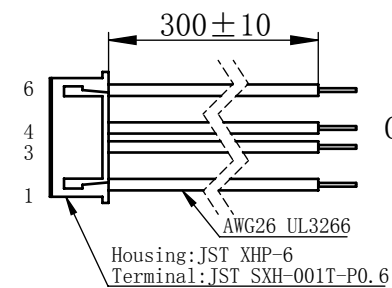
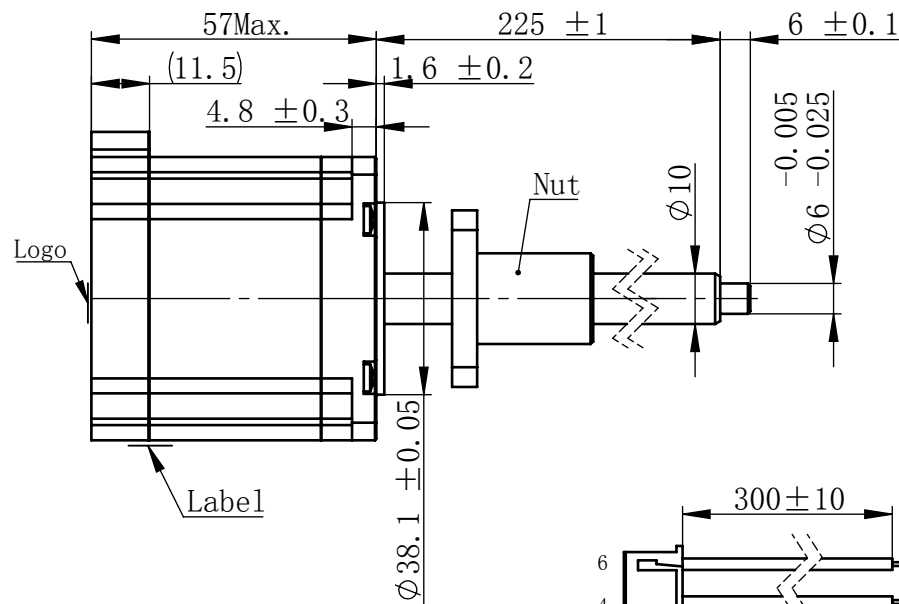
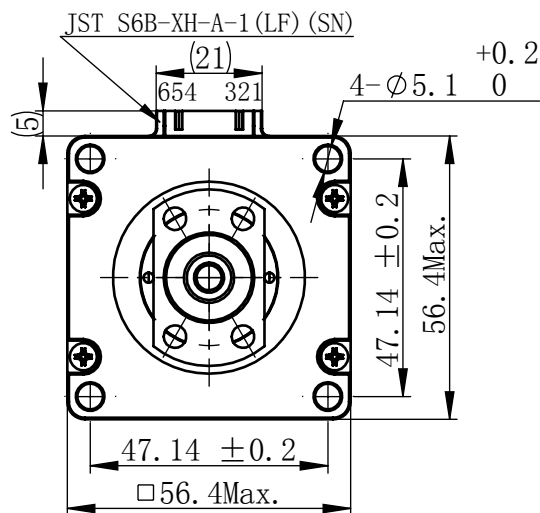


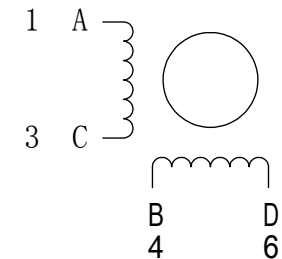
Material NO.

Unit: mm



连接器针位vs. 引线颜色  
Pin No. vs. Lead Wire Colour

Pin No.	颜色 Colour
1	黑 BLK
3	绿 GRN
4	红 RED
6	蓝 BLU



### 励磁顺序 vs. 旋转方向 Exciting Sequence vs. Direction of Rotation

STEP	A	B	C	D
1	+	+	-	-
2	-	+	+	-
3	-	-	+	+
4	+	-	-	+

从安装面看为顺时针方向  
Clockwise view from  
mounting side

电机标签  
Motor label

BALL SCREW MOTOR  
BE238S-B1002-225-AK1-S-220  
XXXXXXXX

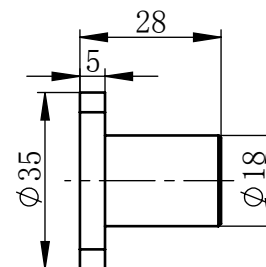
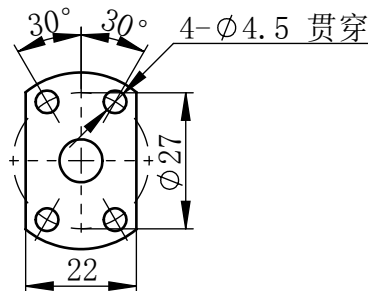
批次号


## 规格 Specifications

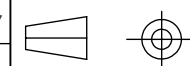
1	相数 Number Of Phase	2
2	步长 Linear Travel/Step	0.01 mm (1.8°)
3	额定电压 Rated Voltage	3.5 V DC
4	额定电流 Rated Current	2.2 Amp
5	额定推力 Rated Thrust	608 N(@300rpm, rated current)
6	相电阻 Phase Resistance	1.6 ohm $\pm$ 10% (20℃)
7	相电感 Phase Inductance	7.2 mH $\pm$ 20% (1kHz 1V rms)
8	转子惯量 Rotor Inertia	260 gcm <sup>2</sup>
9	重量 Weight	0.6 Kg
10	绝缘等级 Insulation Class	B(130℃)
11	丝杠直径 Screw Diameter	10 mm
12	丝杠导程 Lead	2 mm

## 版本变更

版本	变更说明	签名	日期
----	------	----	----



未标注线性尺寸和公差 Unclear linear dimensions without individual tolerance indications GB/T 1804-M eqv ISO 2768-1:M  未标注形状与位置尺寸公差 Geometrical tolerance for features without individual tolerance indications GB/T 1184-K eqv ISO 2768-2:K	设计 Design	杨淑娟	2019/4/1
	校核 Check		
	工艺 Process		
	标准化 Standard		
 I. 请避免螺母脱离丝杠 Keep nut on screw.  II. 非专业人士请勿拆解电机 Avoid disassembly without qualification.	批准 Approve		



First Angle Method

材料 Material	总图
----------------	----

Page 1 of 1

**PBC+MOONS'** 上海市闵行区  
鸣嘉路168号  
上海鸣志派博思自动化技术有限公司 (021) 52634688

比例 Scale	零件名 Part Name	直线步进电机
2:3	型号 Model NO.	BE238S-B1002-225-AK1-S-220
A0	物料号 Material NO.	4611110032927