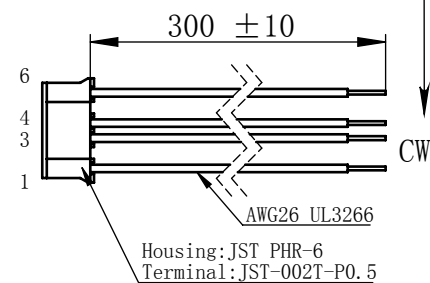
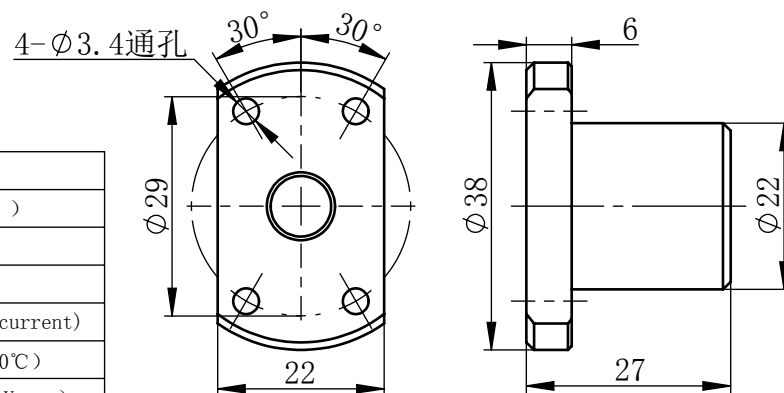
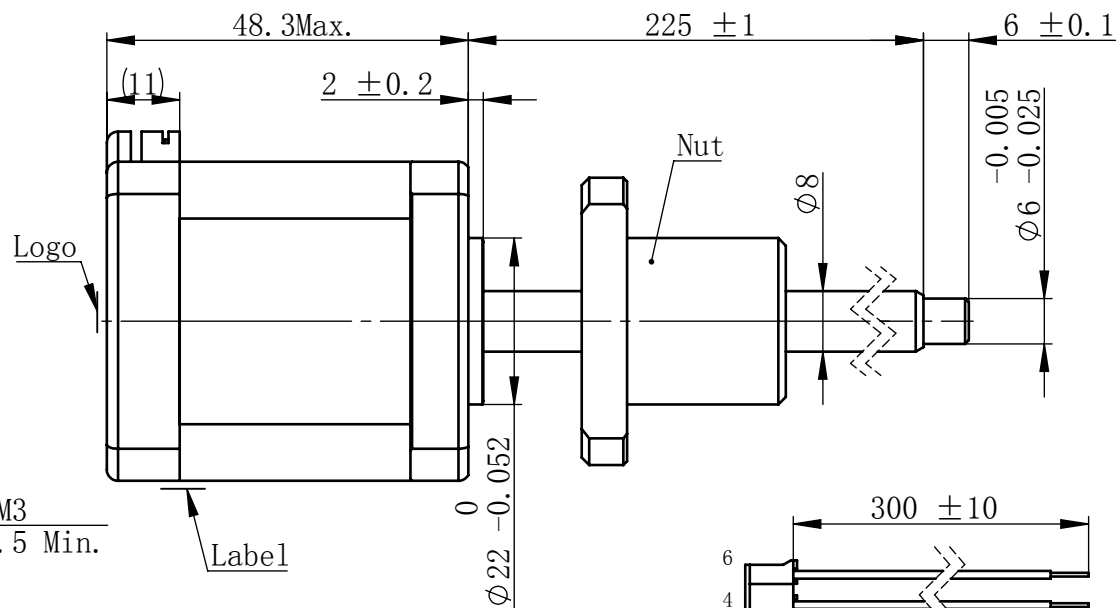


Material NO.

JST S6B-PH-K-S (LF) (SN)
or MOLEX 89401-0610



4-M3
Depth 4.5 Min.



连接器针位vs. 引线颜色
Pin No. vs. Lead Wire Colour

Pin No.	颜色 Colour
1	黑 BLK
3	绿 GRN
4	红 RED
6	蓝 BLU

A circuit diagram showing a voltage source on the left and a resistor on the right. The voltage source is represented by two parallel vertical lines of unequal length, with the longer line on the left. The top terminal is labeled 'A' and the bottom terminal is labeled 'C'. To the left of the terminals, the numbers '1' and '3' are written. The resistor is represented by a zigzag line. Its top terminal is connected to the top terminal of the voltage source (terminal A), and its bottom terminal is connected to the bottom terminal of the voltage source (terminal C). To the right of the resistor, the numbers '4' and 'B' are written.

励磁顺序 vs. 旋转方向 Exciting Sequence vs. Direction of Rotation

STEP	A	B	C	D
1	+	+	-	-
2	-	+	+	-
3	-	-	+	+
4	+	-	-	+

从安装面看为顺时针方向
Clockwise view from
mounting side

电机标签
Motor label

BALL SCREW MOTOR
BE176S-B0805-225-BU1-S-200
XXXXXXXX

批次号

规格 Specifications

1	相数 Number Of Phase	2
2	步长 Linear Travel/Step	0.025 mm (1.8°)
3	额定电压Rated Voltage	2.5 V DC
4	额定电流 Rated Current	2 Amp
5	额定推力 Rated Thrust	154 N(@300rpm, rated current)
6	相电阻 Phase Resistance	1.25 ohm±10% (20℃)
7	相电感 Phase Inductance	2.8 mH±20% (1kHz 1V rms)
8	转子惯量 Rotor Inertia	82 gcm ²
9	重量 Weight	0.36 Kg
10	绝缘等级 Insulation Class	B(130℃)
11	丝杠直径 Screw Diameter	8 mm
12	丝杠导程 Lead	5 mm

版本变更

版本	变更说明	签名	日期
----	------	----	----

未标注线性尺寸和公差
Tolerance for linear and dimensions
without individual tolerance indications
GB/T 1804-M eqv ISO 2768-1:M

未标注形状与位置尺寸公差
Geometrical tolerance for features
without individual tolerance indications
GB/T 1184-K eqv ISO 2768-2:K



- I. 请避免螺母脱离丝杠
Keep nut on screw.
- II. 非专业人士请勿拆解电机
Avoid disassembly without qualification.

2020/1/13

[illegible]

Method

总图

of 1

PBC+MOONS' 上海市闵行区
鸣嘉路168号
上海鸣志派博思自动化技术有限公司 (021)52634688

图	比例 Scale	零件名 Part Name	直线步进电机
	1:1	型号 Model NO.	BE176S-B0805-225-BU1-S-200
版本 Version	A0	物料号 Material NO.	4611110032899