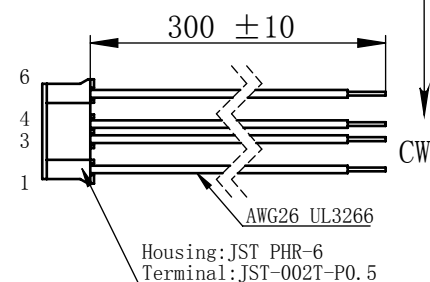
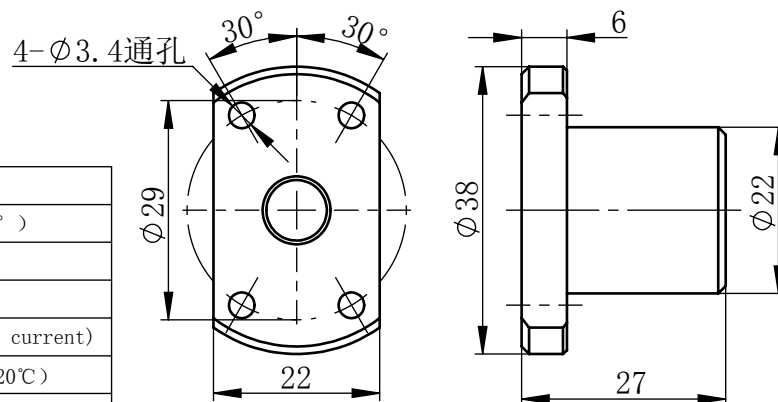
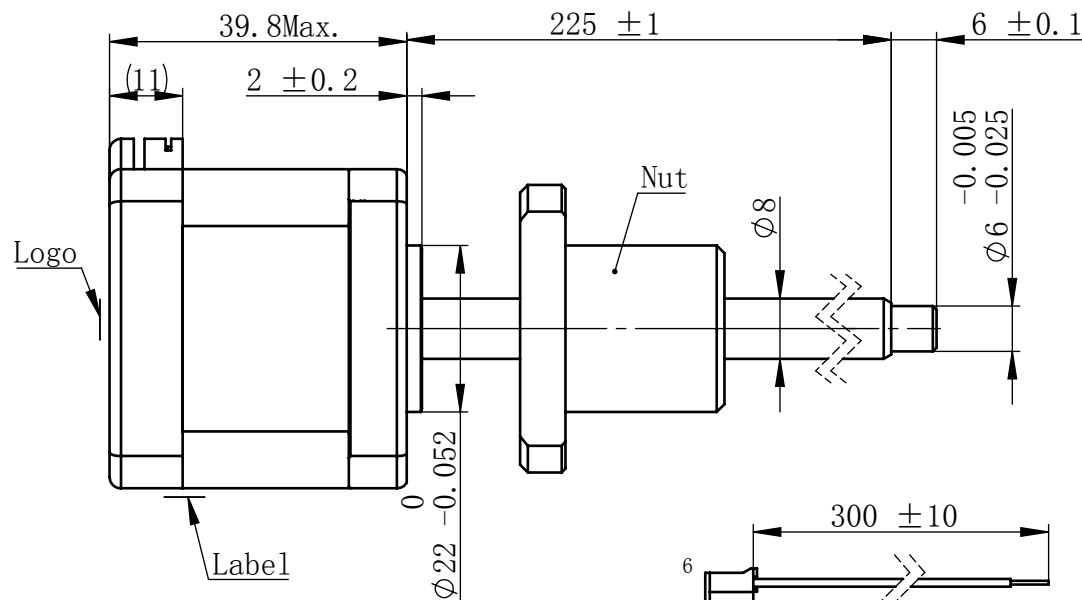
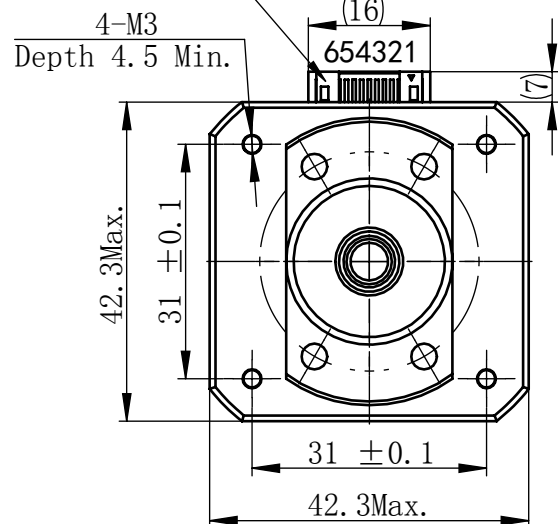


Material NO.

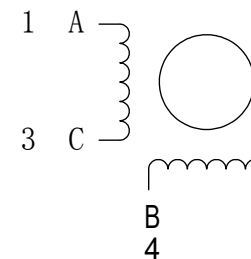
JST S6B-PH-K-S (LF) (SN)
or MOLEX 89401-0610



连接器针位vs. 引线颜色
Pin No. vs. Lead Wire Colour

| Pin No. | 颜色 Colour |
|---------|-----------|
| 1 | 黑 BLA |
| 3 | 绿 GRN |
| 4 | 红 RED |
| 6 | 蓝 BLU |

接线图
Wiring Diagram



励磁顺序 vs. 旋转方向 Exciting Sequence vs. Direction of Rotation

| STEP | A | B | C | D |
|------|---|---|---|---|
| 1 | + | + | - | - |
| 2 | - | + | + | - |
| 3 | - | - | + | + |
| 4 | + | - | - | + |

从安装面看为顺时针方向
Clockwise view from
mounting side

电机标签
Motor label

| |
|--|
| BALL SCREW MOTOR BE172S-B0805-225-BU1-S-200 XXXXXXXX |
|--|

批次号

规格 Specifications

| | | |
|----|-----------------------|-------------------------------|
| 1 | 相数 Number Of Phase | 2 |
| 2 | 步长 Linear Travel/Step | 0.025 mm (1.8°) |
| 3 | 额定电压Rated Voltage | 2.08 V DC |
| 4 | 额定电流 Rated Current | 2 Amp |
| 5 | 额定推力 Rated Thrust | 113 N(@300rpm, rated current) |
| 6 | 相电阻 Phase Resistance | 1.04 ohm±10% (20℃) |
| 7 | 相电感 Phase Inductance | 2.5 mH±20% (1kHz 1V rms) |
| 8 | 转子惯量 Rotor Inertia | 57 gcm ² |
| 9 | 重量 Weight | 0.28 Kg |
| 10 | 绝缘等级 Insulation Class | B(130℃) |
| 11 | 丝杠直径 Screw Diameter | 8 mm |
| 12 | 丝杠导程 Lead | 5 mm |

版本变更

| 版本 | 变更说明 | 签名 | 日期 |
|----|------|----|----|
|----|------|----|----|


未标注线性尺寸和公差
Tolerance for linear and dimensions
without individual tolerance indications
GB/T 1804-M eqv ISO 2768-1:M

未标注形状与位置尺寸公差
Geometrical tolerance for features
without individual tolerance indications
GB/T 1184-K eqv ISO 2768-2:K



- I. 请避免螺母脱离丝杠
Keep nut on screw.
- II. 非专业人士请勿拆解电机
Avoid disassembly without qualification.

| | | |
|-----------------|-----|----------|
| 设计 Design | 杨淑娟 | 2019/4/1 |
| 校核 Check | | |
| 工艺 Process | | |
| 标准化 Standard | | |
| 批准 Approve | | |

| | |
|---|---------------------------|
|  | <p>First Angle Method</p> |
| <p>材料 Material</p> | <p>总</p> |
| <p>Page 1 of 1</p> | |

| | | | |
|---|-------------|---------------------|----------------------------|
|  上海市闵行区 鸣嘉路168号 | | | |
| 上海鸣志派博思自动化技术有限公司 (021)52634688 | | | |
| 图 | 比例 Scale | 零件名 Part Name | 直线步进电机 |
| | 1:1 | 型号 Model NO. | BE172S-B0805-225-BU1-S-200 |
| 版本 Version | A0 | 物料号 Material NO. | 4611110032753 |