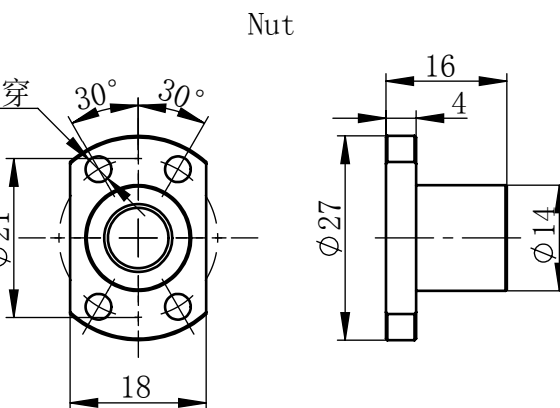
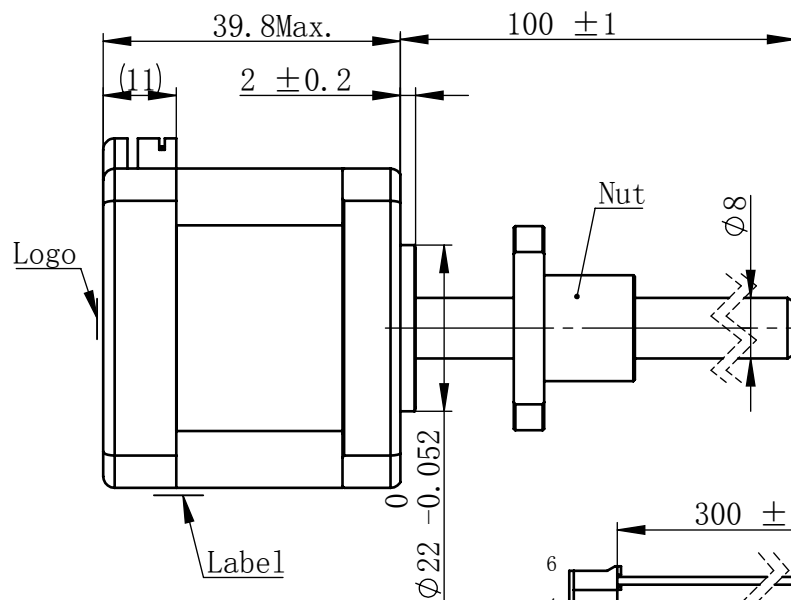
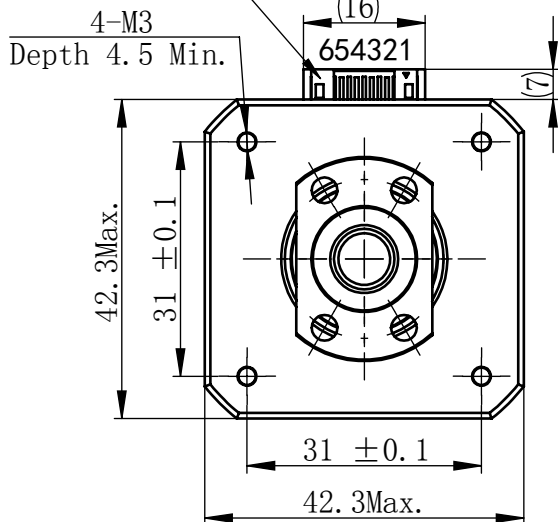


Material NO. 4611110032848

Unit: mm

JST S6B-PH-K-S (LF) (SN)
or MOLEX 89401-0610



规格 Specifications

1	相数 Number Of Phase	2
2	步长 Linear Travel/Step	0.01 mm (1.8°)
3	额定电压 Rated Voltage	2.08 V DC
4	额定电流 Rated Current	2 Amp
5	额定推力 Rated Thrust	284 N (@300rpm, rated current)
6	相电阻 Phase Resistance	1.04 ohm ± 10% (20°C)
7	相电感 Phase Inductance	2.5 mH ± 20% (1kHz 1V rms)
8	转子惯量 Rotor Inertia	57 gcm ²
9	重量 Weight	0.28 Kg
10	绝缘等级 Insulation Class	B (130°C)
11	丝杠直径 Screw Diameter	8 mm
12	丝杠导程 Lead	2 mm

版本变更

版本	变更说明	签名	日期
----	------	----	----

未标注线性尺寸和公差
Tolerance for linear and dimensions
without individual tolerance indications
GB/T 1804-M eqv ISO 2768-1:M

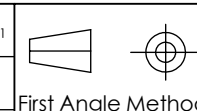
未标注形状与位置尺寸公差
Geometrical tolerance for features
without individual tolerance indications
GB/T 1184-K eqv ISO 2768-2:K

I. 请避免螺母脱离丝杠
Keep nut on screw.
II. 非专业人士请勿拆解电机
Avoid disassembly without
qualification.

设计 Design	杨淑娟	2019/4/11
校核 Check		
工艺 Process		
标准化 Standard		
批准 Approve		

连接器针位 vs. 引线颜色
Pin No. vs. Lead Wire Colour

Pin No.	颜色 Colour
1	黑 BLA
3	绿 GRN
4	红 RED
6	蓝 BLU



First Angle Method

材料
Material

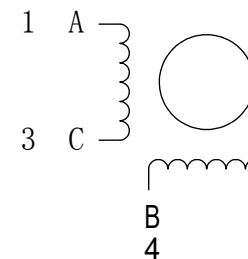
总图

Page 1 of 1

PBC+MOONS 上海市闵行区
鸣嘉路168号
上海鸣志派博思自动化技术有限公司 (021) 52634688

比例 Scale	零件名 Part Name	直线步进电机
1:1	型号 Model NO.	BE172S-B0802-100-AK1-0-200
	物料号 Material NO.	4611110032848

接线图 Wiring Diagram



励磁顺序 vs. 旋转方向
Exciting Sequence vs.
Direction of Rotation

STEP	A	B	C	D	
1	+	+	-	-	CCW ↑
2	-	+	+	-	
3	-	-	+	+	
4	+	-	-	+	

从安装面看为顺时针方向
Clockwise view from
mounting side

电机标签
Motor label

BALL SCREW MOTOR
BE172S-B0802-100-AK1-0-200
XXXXXXXX

批次号