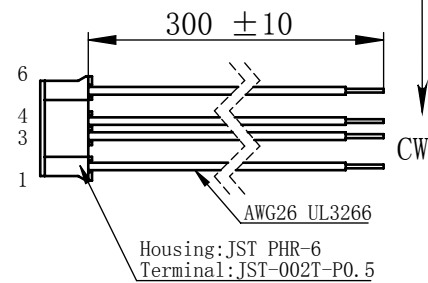
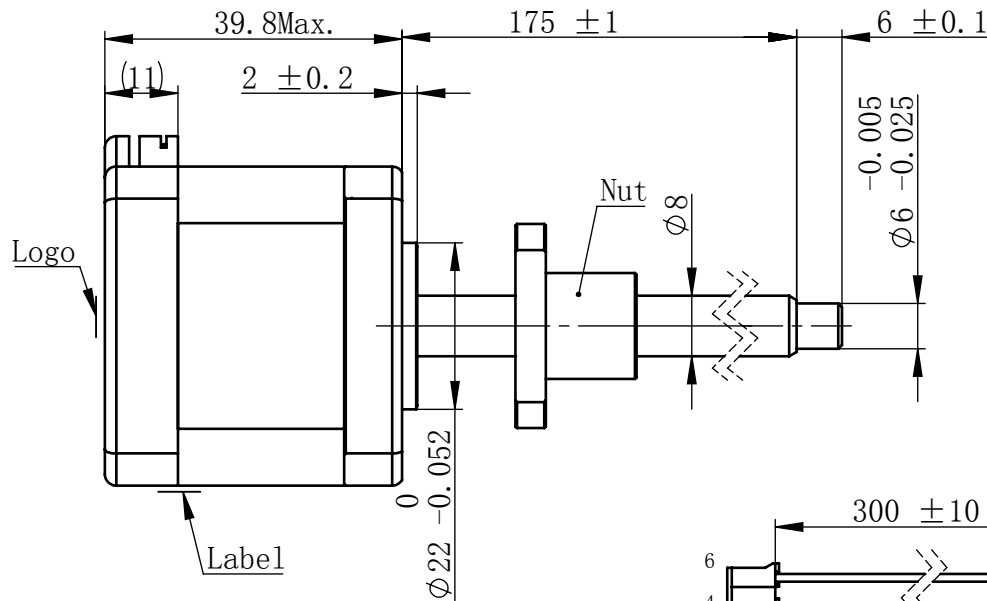
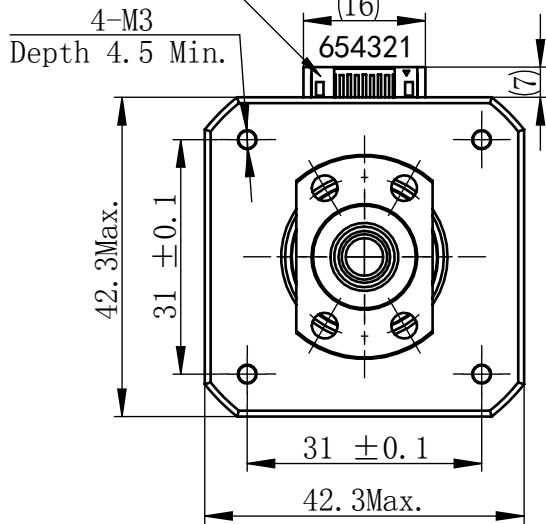


Material NO. 4611110032843

Unit: mm

JST S6B-PH-K-S (LF) (SN)
or MOLEX 89401-0610

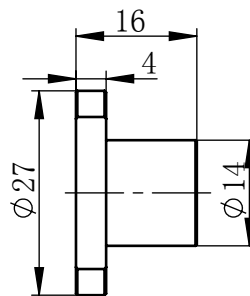
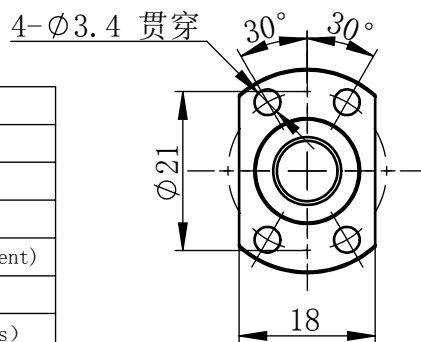


规格 Specifications

| | | |
|----|-----------------------|-------------------------------|
| 1 | 相数 Number Of Phase | 2 |
| 2 | 步长 Linear Travel/Step | 0.005 mm (1.8°) |
| 3 | 额定电压 Rated Voltage | 2.08 V DC |
| 4 | 额定电流 Rated Current | 2 Amp |
| 5 | 额定推力 Rated Thrust | 300 N(@300rpm, rated current) |
| 6 | 相电阻 Phase Resistance | 1.04 ohm ±10% (20℃) |
| 7 | 相电感 Phase Inductance | 2.5 mH ±20% (1kHz 1V rms) |
| 8 | 转子惯量 Rotor Inertia | 57 gcm ² |
| 9 | 重量 Weight | 0.28 Kg |
| 10 | 绝缘等级 Insulation Class | B(130℃) |
| 11 | 丝杠直径 Screw Diameter | 8 mm |
| 12 | 丝杠导程 Lead | 1 mm |

版本变更

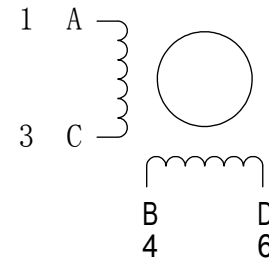
| 版本 | 变更说明 | 签名 | 日期 |
|----|------|----|----|
|----|------|----|----|



连接器针位 vs. 引线颜色
Pin No. vs. Lead Wire Colour

| Pin No. | 颜色 Colour |
|---------|-----------|
| 1 | 黑 BLA |
| 3 | 绿 GRN |
| 4 | 红 RED |
| 6 | 蓝 BLU |

接线图 Wiring Diagram



励磁顺序 vs. 旋转方向
Exciting Sequence vs.
Direction of Rotation

| STEP | A | B | C | D | |
|------|---|---|---|---|-------|
| 1 | + | + | - | - | CCW ↑ |
| 2 | - | + | + | - | |
| 3 | - | - | + | + | |
| 4 | + | - | - | + | |

从安装面看为顺时针方向
Clockwise view from
mounting side

电机标签
Motor label

BALL SCREW MOTOR
BE172S-B0801-175-AK1-S-200
XXXXXXX

批次号

未标注线性尺寸和公差
Tolerance for linear and dimensions
without individual tolerance indications
GB/T 1804-M eqv ISO 2768-1:M

未标注形状与位置尺寸公差
Geometrical tolerance for features
without individual tolerance indications
GB/T 1184-K eqv ISO 2768-2:K

I. 请避免螺母脱离丝杠
Keep nut on screw.

II. 非专业人士请勿拆解电机
Avoid disassembly without
qualification.

| | | |
|-----------------|-----|-----------|
| 设计 Design | 杨淑娟 | 2019/4/16 |
| 校核 Check | | |
| 工艺 Process | | |
| 标准化 Standard | | |
| 批准 Approve | | |

| | |
|----------------|---------------|
| 材料 Material | 总图 |
| Page 1 of 1 | 版本 Version |

| | |
|--------------------------------|----------------------------|
| PBC+MOONS' 上海市闵行区 鸣嘉路168号 | |
| 上海鸣志派博思自动化技术有限公司 (021)52634688 | |
| 比例 Scale | 零件名 Part Name |
| 1:1 | 直线步进电机 |
| 型号 Model NO. | BE172S-B0801-175-AK1-S-200 |
| 物料号 Material NO. | 4611110032843 |