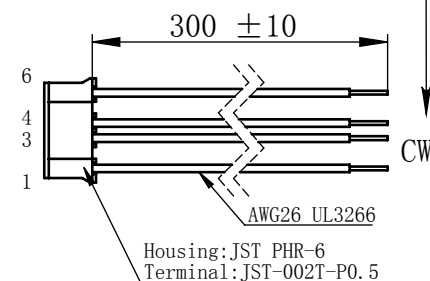
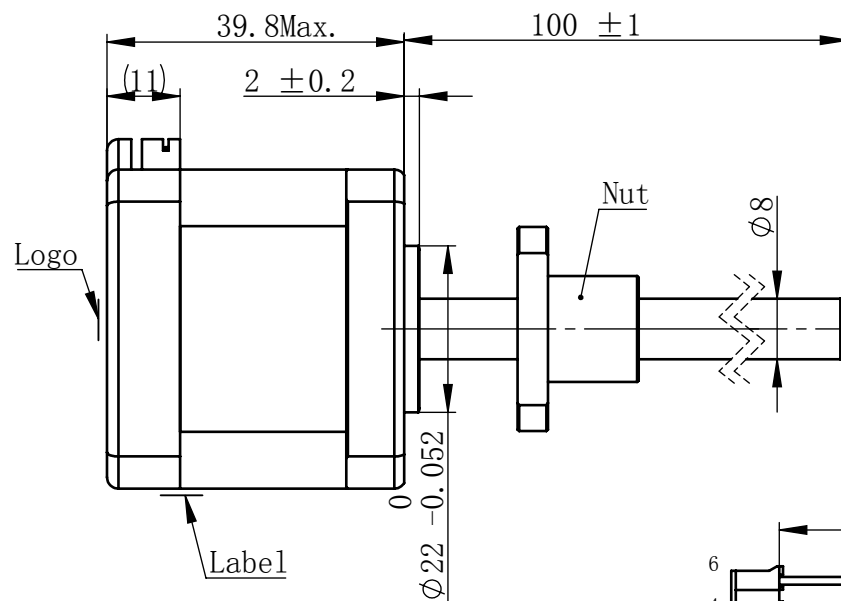
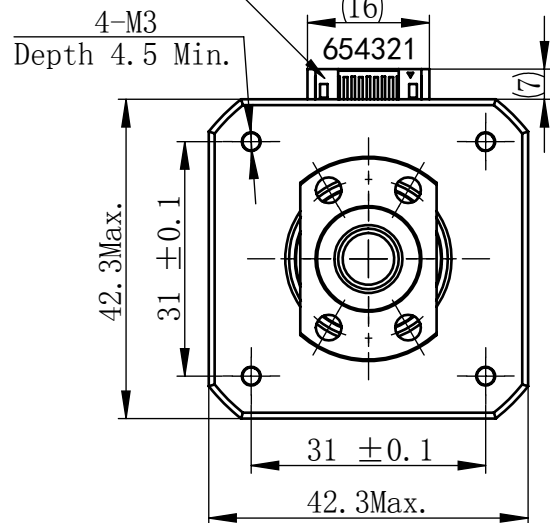


Material NO.

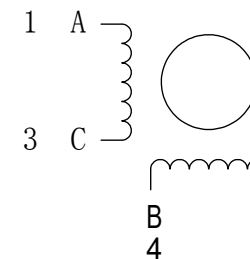
JST S6B-PH-K-S (LF) (SN)
or MOLEX 89401-0610



连接器针位vs. 引线颜色
Pin No. vs. Lead Wire Colour

Pin No.	颜色 Colour
1	黑 BLA
3	绿 GRN
4	红 RED
6	蓝 BLU

接线图
Wiring Diagram



励磁顺序 vs. 旋转方向 Exciting Sequence vs. Direction of Rotation

STEP	A	B	C	D
1	+	+	-	-
2	-	+	+	-
3	-	-	+	+
4	+	-	-	+

从安装面看为顺时针方向
Clockwise view from
mounting side

电机标签
Motor label

BALL SCREW MOTOR
BE172S-B0801-100-AK1-0-200
XXXXXXXX

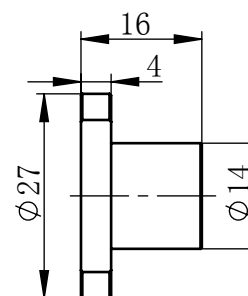
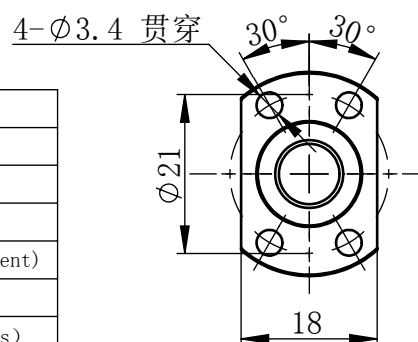
批次号

规格 Specifications

1	相数 Number Of Phase	2
2	步长 Linear Travel/Step	0.005 mm (1.8°)
3	额定电压Rated Voltage	2.08 V DC
4	额定电流 Rated Current	2 Amp
5	额定推力 Rated Thrust	300 N(@300rpm, rated current)
6	相电阻 Phase Resistance	1.04 ohm±10% (20℃)
7	相电感 Phase Inductance	2.5 mH±20% (1kHz 1V rms)
8	转子惯量 Rotor Inertia	57 gcm ²
9	重量 Weight	0.28 Kg
10	绝缘等级 Insulation Class	B(130℃)
11	丝杠直径 Screw Diameter	8 mm
12	丝杠导程 Lead	1 mm


版本变更

版本	变更说明	签名	日期
----	------	----	----



未标注线性尺寸和公差
Tolerance for linear and dimensions
without individual tolerance indications
GB/T 1804-M eqv ISO 2768-1:M

未标注形状与位置尺寸公差
Geometrical tolerance for features
without individual tolerance indications
GB/T 1184-K eqv ISO 2768-2:K



- I. 请避免螺母脱离丝杠
Keep nut on screw.
- II. 非专业人士请勿拆解电机
Avoid disassembly without qualification.



设计 Design	杨淑娟	2019/4/16
--------------	-----	-----------

校核 Check		
-------------	--	--

工艺 Process		
---------------	--	--

标准化 Standard		
-----------------	--	--

批准 Approve		
---------------	--	--

6		
---	---	---

[illegible]

Material	忘日
----------	----

Page 1 of 1

PBC MOONS' 上海市闵行区
鸣嘉路168号
上海鸣志派博思自动化技术有限公司 (021) 52634688

图	比例 Scale	零件名 Part Name	直线步进电机
	1:1	型号 Model NO.	BE172S-B0801-100-AK1-0-200

版本 Version	A0	物料号 Material NO.	4611110032840
---------------	----	---------------------	---------------