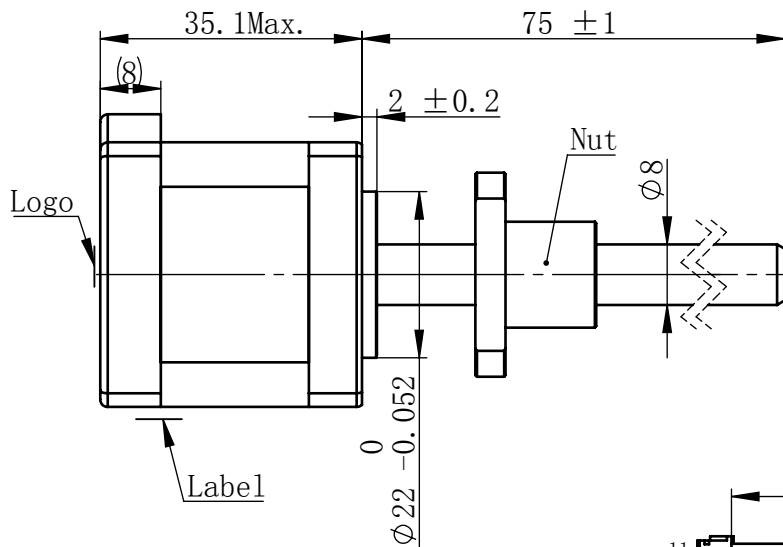
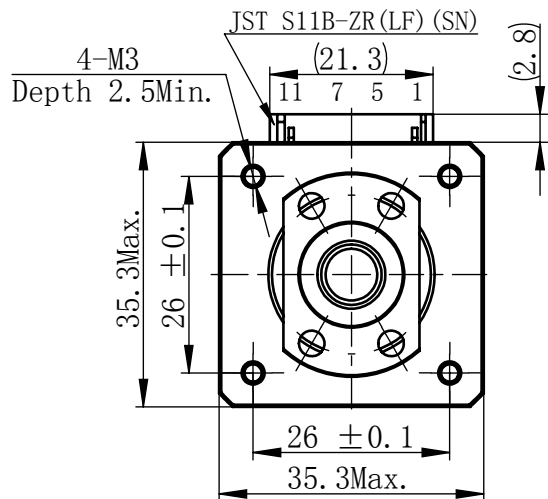
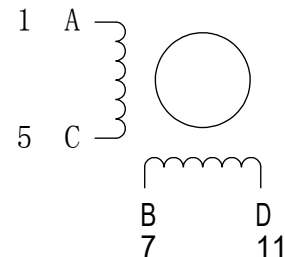


物料号  
Material NO. 46111110032812

Unit: mm



## 接线图 Wiring Diagram



## 励磁顺序 vs. 旋转方向 Exciting Sequence vs. Direction of Rotation

| STEP | A | B | C | D |          |
|------|---|---|---|---|----------|
| 1    | + | + | - | - | CCW<br>↑ |
| 2    | - | + | + | - |          |
| 3    | - | - | + | + |          |
| 4    | + | - | - | + |          |

## 从安装面看为顺时针方向 Clockwise view from mounting side

电机标签  
Motor label

BALL SCREW MOTOR  
BE143S-B0802-75-AK1-0-150  
XXXXXXXX

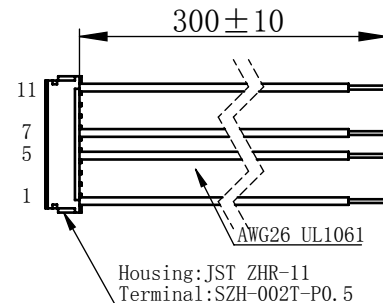
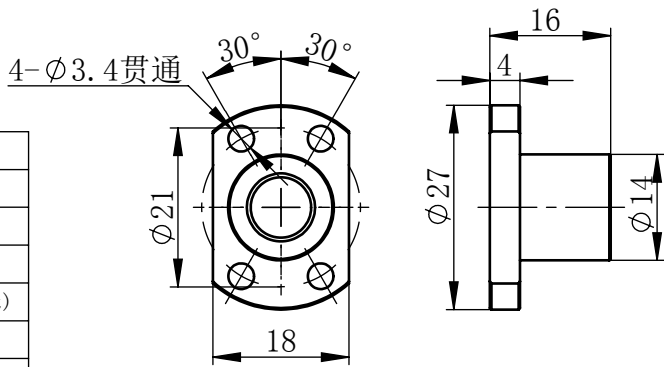
批次号

## 规格 Specifications

|    |                       |                                |
|----|-----------------------|--------------------------------|
| 1  | 相数 Number Of Phase    | 2                              |
| 2  | 步长 Linear Travel/Step | 0.01 mm (1.8°)                 |
| 3  | 额定电压 Rated Voltage    | 2.4 V DC                       |
| 4  | 额定电流 Rated Current    | 1.5 Amp                        |
| 5  | 额定推力 Rated Thrust     | 134 N (@300rpm, rated current) |
| 6  | 相电阻 Phase Resistance  | 1.61 ohm ± 10% (20°C)          |
| 7  | 相电感 Phase Inductance  | 2.5 mH ± 20% (1kHz 1V rms)     |
| 8  | 转子惯量 Rotor Inertia    | 20 gcm <sup>2</sup>            |
| 9  | 重量 Weight             | 0.21 Kg                        |
| 10 | 绝缘等级 Insulation Class | B (130°C)                      |
| 11 | 丝杠直径 Screw Diameter   | 8 mm                           |
| 12 | 丝杠导程 Lead             | 2 mm                           |

## 版本变更

| 版本 | 变更说明 | 签名 | 日期 |
|----|------|----|----|
|----|------|----|----|



连接器针位 vs. 引线颜色  
Pin No. vs. Lead Wire Colour

| Pin No. | 颜色 Colour |
|---------|-----------|
| 1       | 黑 BLK     |
| 5       | 绿 GRN     |
| 7       | 红 RED     |
| 11      | 蓝 BLU     |

未标注线性尺寸和公差  
Tolerance for linear and dimensions  
without individual tolerance indications  
GB/T 1804-M eqv ISO 2768-1:M

未标注形状与位置尺寸公差  
Geometrical tolerance for features  
without individual tolerance indications  
GB/T 1184-K eqv ISO 2768-2:K

I. 请避免螺母脱离丝杠  
Keep nut on screw.

II. 非专业人士请勿拆解电机  
Avoid disassembly without  
qualification.

|                 |     |           |
|-----------------|-----|-----------|
| 设计<br>Design    | 杨淑娟 | 2019/4/11 |
| 校核<br>Check     |     |           |
| 工艺<br>Process   |     |           |
| 标准化<br>Standard |     |           |
| 批准<br>Approve   |     |           |

|                |               |
|----------------|---------------|
| 材料<br>Material | 总图            |
| Page 1 of 1    | 版本<br>Version |

|                                 |                           |
|---------------------------------|---------------------------|
| PBC+MOONS' 上海市闵行区<br>鸣嘉路168号    |                           |
| 上海鸣志派博思自动化技术有限公司 (021) 52634688 |                           |
| 比例<br>Scale                     | 零件名<br>Part Name          |
| 1:1                             | 直线步进电机                    |
| 型号<br>Model NO.                 | BE143S-B0802-75-AK1-0-150 |
| 物料号<br>Material NO.             | 46111110032812            |