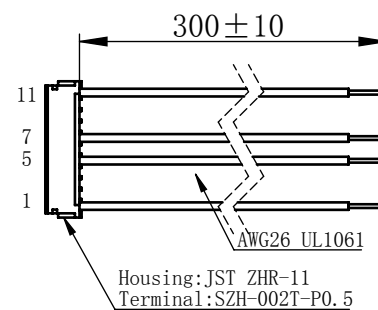
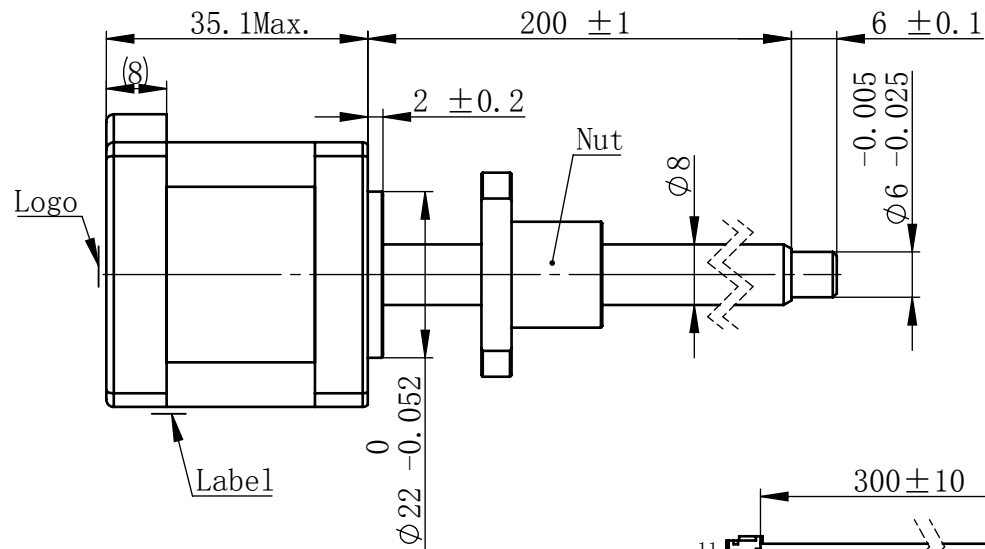
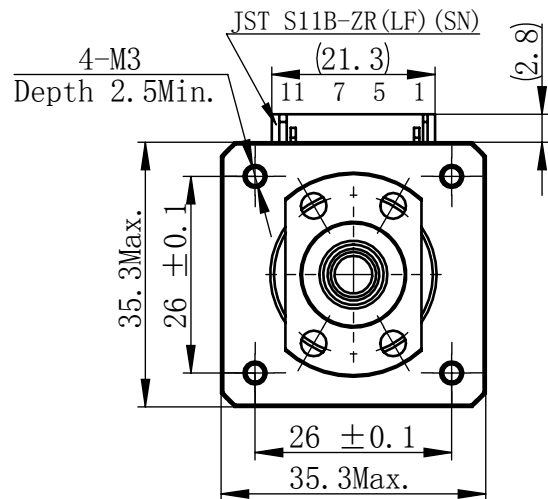


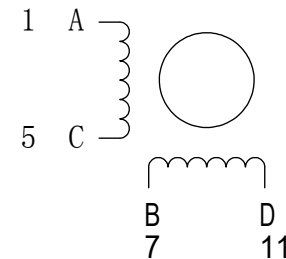
Material NO.

Unit: mm



连接器针位vs. 引线颜色
Pin No. vs. Lead Wire Colour

Pin No.	颜色 Colour
1	黑 BLK
5	绿 GRN
7	红 RED
11	蓝 BLU



励磁顺序 vs. 旋转方向 Exciting Sequence vs. Direction of Rotation

STEP	A	B	C	D
1	+	+	-	-
2	-	+	+	-
3	-	-	+	+
4	+	-	-	+

从安装面看为顺时针方向
Clockwise view from
mounting side

电机标签
Motor label

BALL SCREW MOTOR
BE143S-B0801-200-AK1-S-150
XXXXXXX

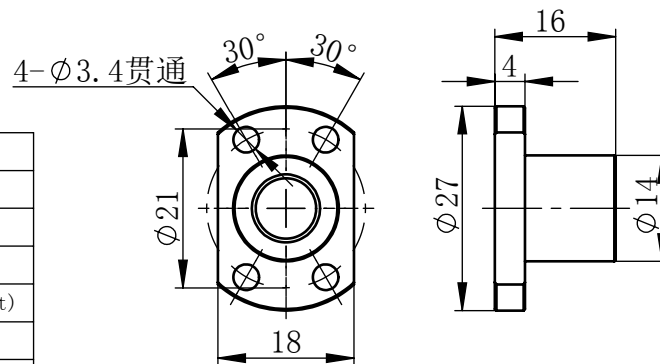
批次号




规格 Specifications

1	相数 Number Of Phase	2
2	步长 Linear Travel/Step	0.005 mm (1.8°)
3	额定电压Rated Voltage	2.4 V DC
4	额定电流 Rated Current	1.5 Amp
5	额定推力 Rated Thrust	268 N(@300rpm, rated current)
6	相电阻 Phase Resistance	1.61 ohm±10% (20℃)
7	相电感 Phase Inductance	2.5 mH±20% (1kHz 1V rms)
8	转子惯量 Rotor Inertia	20 gcm ²
9	重量 Weight	0.21 Kg
10	绝缘等级 Insulation Class	B(130℃)
11	丝杠直径 Screw Diameter	8 mm
12	丝杠导程 Lead	1 mm

版本变更

版本	变更说明	签名	日期
----	------	----	----



<div><div><div><div></div><div>I. 请避免螺母脱离丝杠 Keep nut on screw.</div></div><div><div>II. 非专业人士请勿拆解电机 Avoide disassembly without qualification.</div></div></div></div>	<div><div>未标注线性尺寸和公差 Tolerance for linear ac dimensions without individual tolerance indications GB/T 1804-M eqv ISO 2768-1:M</div><div>未标注形状与位置尺寸公差 Geometrical tolerance for features without individual tolerance indications GB/T 1184-K eqv ISO 2768-2:K</div></div>	<div><div>设计 Design</div><div>校核 Check</div><div>工艺 Process</div></div>	<div><div>杨淑娟</div><div>2019/4/11</div></div>	<div><div><div></div><div>First Angle Method</div></div></div>	<div><div><div></div><div>上海市闵行区 鸣嘉路168号</div></div><div>上海鸣志派博思自动化技术有限公司 (021)52634688</div></div>			
				<div><div>材料 Material</div><div>总图</div></div>	<div><div>比例 Scale</div><div>1:1</div></div>	<div><div>零件名 Part Name</div><div>型号 Model NO.</div></div>	<div><div>直线步进电机</div><div>BE143S-B0801-200-AK1-S-150</div></div>	
				<div><div>Page 1 of 1</div><div>版本 Version</div></div>	<div><div>A0</div></div>	<div><div>物料号 Material NO.</div></div>	<div><div>4611110032799</div></div>	
		<div><div>标准化 Standard</div><div>批准 Approve</div></div>						