

SLA side load adaptor

In the operation condition of normal shock absorber, the range of allowed eccentric load is within $\pm 3^\circ$, however, if this range is exceeded, the torque received by piston rod will be greatly increased to lead to the curving and distortion of the piston rod of the shock absorber. Our accessory CJAC SLA Side load adaptor is applicable to the situation of large eccentric angle, in this case, the receiving range is effectively expanded to achieve the soft damping at the end of the nonlinear impact stroke, therefore, the stability of the product in operation can be greatly enhanced. Eg., SLA (8, 10, 12) can receive offset impact of 12.5° , SLA (14, 20, 25) can receive offset impact of 25° .

Model number	A mm	B mm	C mm	D mm	E mm	M mm	P mm	S mm	Figure
SLA0806	11	11	—	4	10	M8x1.0	M8x1.0	6	1
SLA1005	13	10.6	11	5	11	M10x1.0	M10x1.0	5	1
SLA1007-S	13	12.6	11	5	11	M10x1.0	M10x1.0	7	1
SLA1008	13	13.6	11	5	11	M10x1.0	M10x1.0	8	1
SLA1210	16	18	13	6	14	M12x1.0	M12x1.0	10	1
SLA1408	18	16	15	8	16	M14x1.5	M14x1.5	8	1
SLA1410	18	18	15	8	16	M14x1.5	M14x1.5	10	1
SLA1412	18	20	15	8	16	M14x1.5	M14x1.5	12	1
SLA1415	18	23	15	8	16	M14x1.5	M14x1.5	15	1
SLA1416	18	24	15	8	16	M14x1.5	M14x1.5	16	1
SLA1420	18	28	15	8	16	M14x1.5	M14x1.5	20	1
SLA1425	18	33	15	8	16	M14x1.5	M14x1.5	25	1
SLA1612	20	20	17	8	16	M16x1.5	M16x1.5	12	1
SLA2015-S	25	26.3	22	11	20	M20x1.5	M20x1.5	15	1
SLA2016	25	27.3	22	11	20	M20x1.5	M20x1.5	16	1
SLA2020	25	31.3	22	11	20	M20x1.5	M20x1.5	20	1
SLA2025	25	36.3	22	11	20	M20x1.5	M20x1.5	25	1
SLA2030	25	41.3	22	11	20	M20x1.5	M20x1.5	30	1
SLA2525	36	38	32	15	30	M25x1.5	M25x1.5	25	1
SLA2530	36	43	32	15	30	M25x1.5	M25x1.5	30	1
SLA2725	36	38	32	15	30	M27x1.5	M27x1.5	25	1
SLA3625	45	87	40	20	5	M45x1.5	M36x1.5	25	2
SLA4250-NH	64	139.5	61	31	—	M64x2.0	M42x1.5	50	3
SLA4275-W	52	148	50	32	15	M52x1.5	M42x1.5	75	2
SLA4525-N	64	92.5	61	31	—	M64x2.0	M45x1.5	25	3

Impact force



Illustration of installation

- Purchase example
- Model index
- Calculation example
- AC series
- Circuit breaker series
- AC-K series
- ACD series
- AC-S series
- AD series
- Stop cylinder series
- Accessory
- Shock absorber for log cabin
- HR series
- PC series
- HD series
- HD series selection
- HD series accessory
- User manual

Figure 1

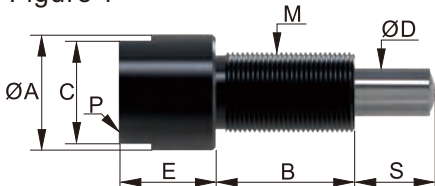


Figure 2

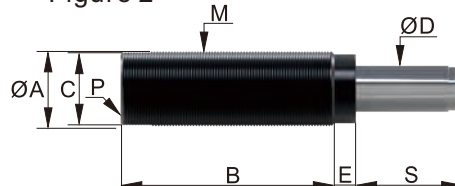
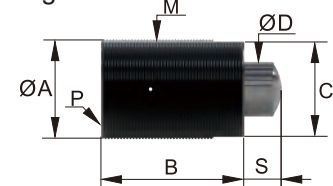


Figure 3



Shock absorber

Accessory

Positioning stop nut

Model number	W mm	L mm	D mm	M	Figure
SC08	11	14	—	M8xP1.0	1
SC10	12.7	16	—	M10xP1.0	1
SC12	14	20	—	M12xP1.0	1
SC14	19	27	18	M14xP1.5	2
SC20	26	35	25	M20xP1.5	2
SC25	32	45	31.3	M25xP1.5	2
SC25x25L	32	25	31.3	M25xP1.5	2
SC25x65L	32	65	31.3	M25xP1.5	2
SC27	32	45	31.3	M27xP1.5	2
SC36	46	80	45	M36xP1.5	2

Figure 1

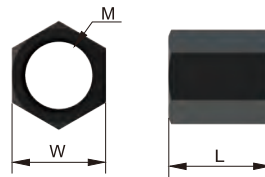
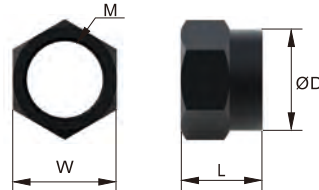
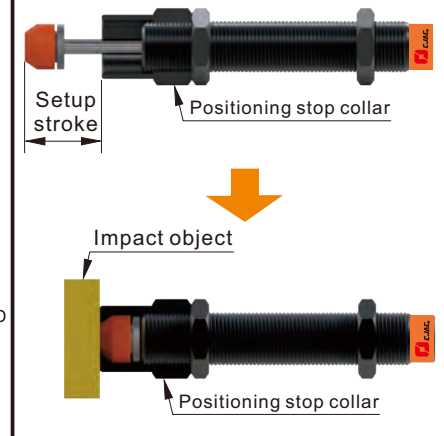


Figure 2



Application illustration of positioning stop nut



Flange

Figure 1

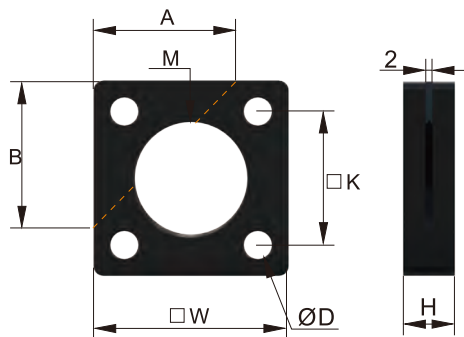
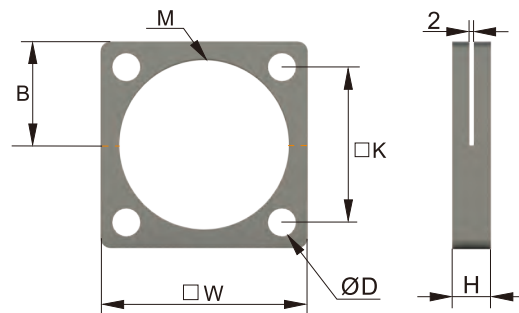


Figure 2



Model number	A mm	B mm	H mm	W mm	K mm	D mm	M	Weight (g)	Figure
F36	45	45	16	60	41	8.5	M36xP1.5	282	1
F42	45	45	16	60	41	8.5	M42xP1.5	236	1
F64	55	55	16	89	70	10.5	M64xP2.0 2 1/2-12UNF	540	1
F85	—	50.8	19	101.6	76.2	13.5	M85xP2.0	590	2