

NOVAKON

HMI – Your Intelligent IIoT Gateway Solutions

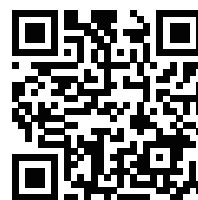
Simple and Elegant



NOVAKON

NOVAKON Co., Ltd.

Bldg.G, 4F, No.3-1, Yuan Qu Street,
Nankang, Taipei, Taiwan 115, R.O.C
Tel : +886-2-77200999 Fax : +886-2-77221932
E-mail: sales@novakon.com.tw
www.novakon.com.tw



visit our website



get e-Catalog

NOVAKON

Enrich Your Experience

Enrichment & Experience

With over two decades of research and development, production and sales in the HMI industry, NOVAKON marks the birth of a premiere series of HMI experiences; the first of its class.

Arts & Technology

Driven by the importance of user experience, NOVAKON reached far and wide to bring together both cutting edge technology and inspiring design concepts. With its intuitive interface, NOVAKON aims to connect human to machine, art to technology.

Intuition & Feel

The easy-to-use interface enhances user experience by providing straightforward and intuitive ways of operating the machine.

Vision & World

NOVAKON products are the most attractive in the market with a textured look pushing the horizon for a new generation of HMIs. We focus on developing user experience to ultimately set a new standard for HMIs.

Quality & Value

In addition to the powerful features and high performance, there maintains an elegant aspect to the user interface. We guarantee reliability and quality of the product, and we are committed to continuing to create more values for user experience.



Novakon Positioning in IIoT System	P03
Applications	P05
HMI Software	
Screen Designer Overview	P11
Ribbon UI, Elegant 3D Widgets	P13
Vector Graphics, Widget Library, Shape Library	P14
Theme-based design, Style, Formatting to Details	P15
3D and Glass Effects, Screen Management, Smartphone-like	P16
Button and Status Bar	
Advanced Widgets	P17
Multi-language, Alarm, Data Log, Fast Sampling, and Adjustable	P19
Data Refresh	
Recipe, Macro, Action, Trigger, Security, Dynamic Behavior	P20
On/Off-line Simulation, Project Protection, Download and Upload	P21
External Barcode Reader and Keyboard, FTP File Transfer, VNC	P22
Remote Monitoring, HMI System Menus	
Dual Ethernet Ports, Wireless Communications, Wi-Fi AP / Station	P23
RESTful API Service, Automation Protocols	
Product Overview	P25
HMI	
N Series	P27
3.5" 320x240 keypad	
4.3" 480x272	
7" 800x480	
P Series	P28
4.3" 480x272	12.1" 1280x800
7" 800x480	15.4" 1280x800
10.2" 800x480	
S Series	P29
7" 800x480	12.1" 1280x800
10.2" 800x480	15.4" 1280x800
Supported PLC / Controller List	P30

IT

IIoT

OT

NOVAKON

HMI Turnkey Solutions



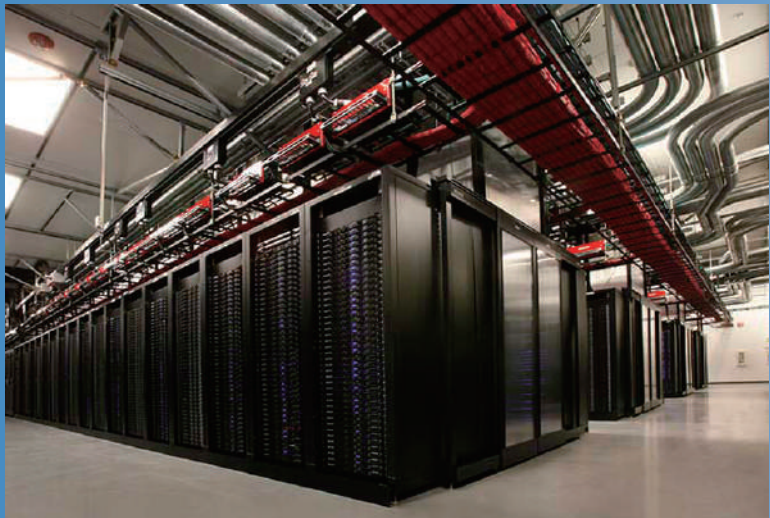
ERP

PLM

MES

SCADA

APPLICATIONS



Applied Field: Data Center
Novakon Solutions:
N04 / N07/ iFace-Designer

Overview:
Novakon HMI is connected to customer's Power Quality Meter (PQM) System to acquire highly accurate measurements of all power metrics including Volts, Amps, Power Factor, Watts, kWh, kVAR, kVARh, Hz, vTHD and iTHD (Total Harmonic Distortion) from Data Center busway systems, panelboards, RPPs, PDUs, switchgear, and distribution panels.

System Diagram

HMI Screenshots

industry 4.0

IIoT

sensors

controllers

Robotics

Measurement

Meters

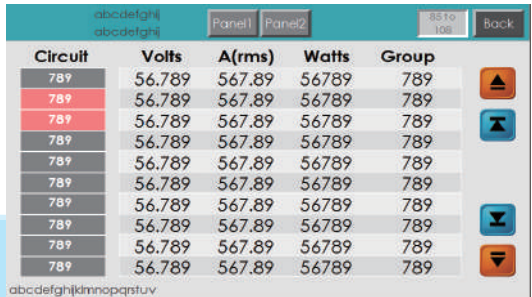
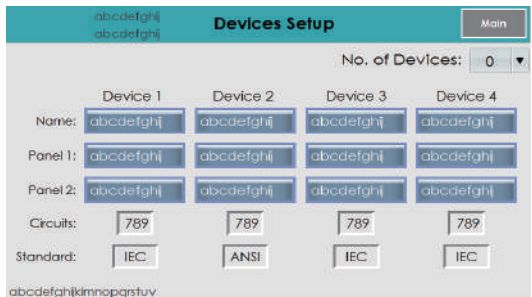
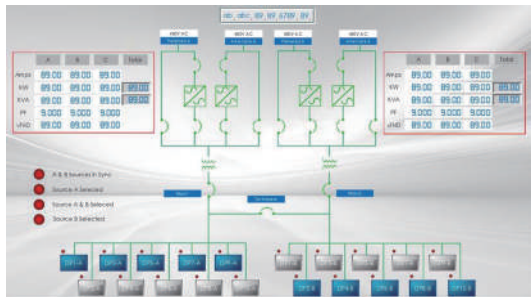
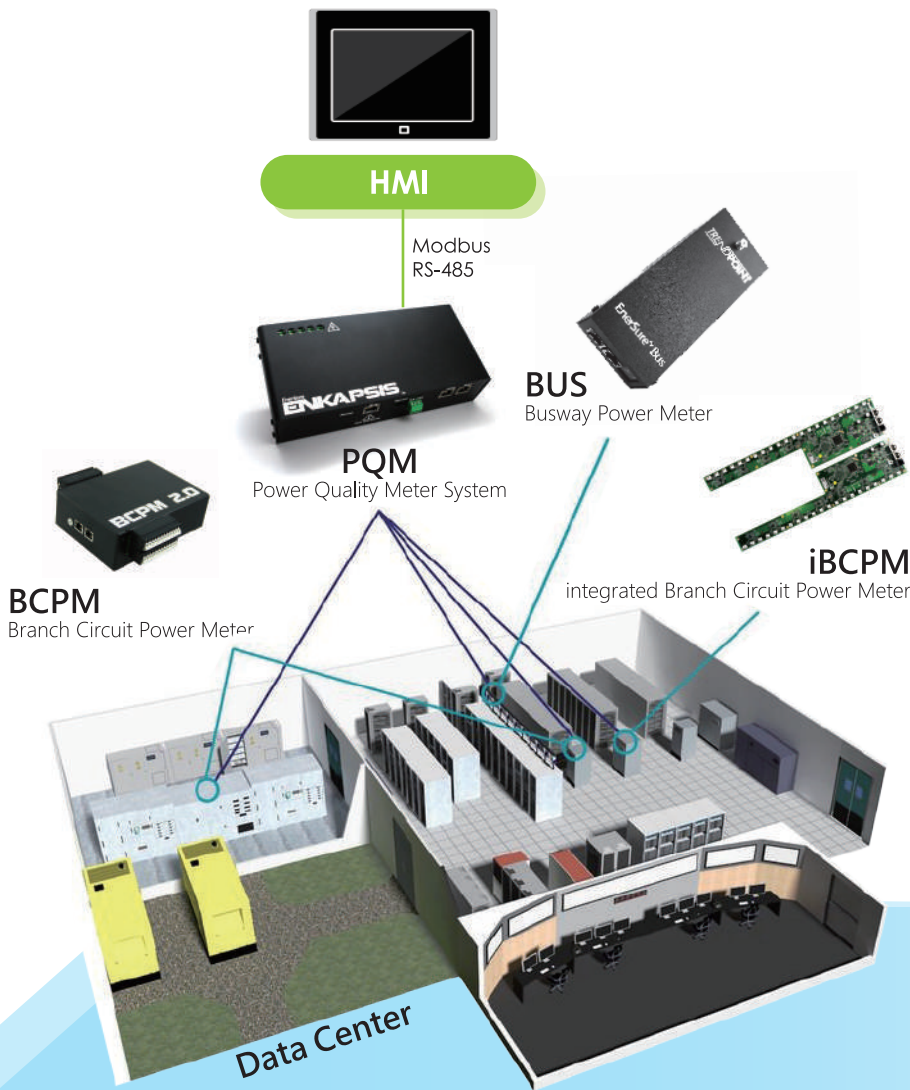
Wireless

Automation

Protocols

Logistics

Security



CASE 2. CNC Machine



Applied Field: CNC Machine Controller
Novakon Solutions:
P07 / P10 / iFace-Designer

Overview:
Novakon develops unique CNC G-code editing tools in HMI software “iFace-Designer” to enable the communication between HMI and CNC controller. The controller programming could be directly done on Novakon HMI for higher work efficiency and lower TCO (Total Cost of Ownership).

System Diagram



HMI Screenshots



CASE 3. Production Equipment



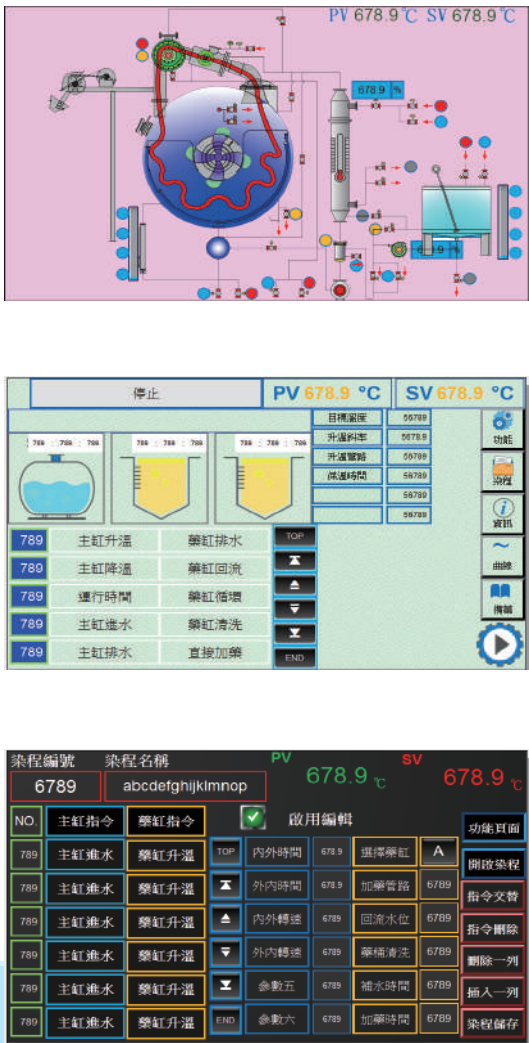
Applied Field: Factory Production
Novakon Solutions:
All Series / iFace-Designer

Overview:
With excellent hardware durability, superior platform performance and elegant user-friendly software interface, Novakon HMIs are widely applied in varied factory production equipment. Industry map covers Electronic, Metal Processing, Textile Dyeing and Finishing, Food Processing to name a few.

System Diagram



HMI Screenshots



CASE 4. Building Automation



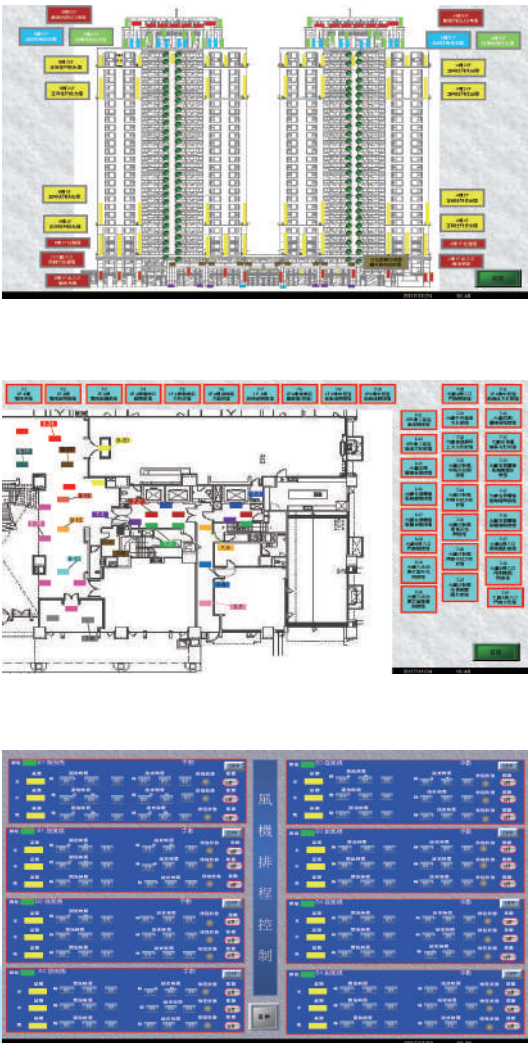
Applied Field: Smart Building
Novakon Solutions:
P15 / P10 / iFace-Designer

Overview:
Novakon builds a software application for system integrator's Building Management System to integrate HVAC (Heating, Ventilation and Air Conditioning), security & fire safety, video surveillance, lighting system, PDU (Power Distribution Unit), elevator control, energy monitoring in a 15" center console HMI and indoor environmental monitoring in 10" HMIs.

System Diagram



HMI Screenshots



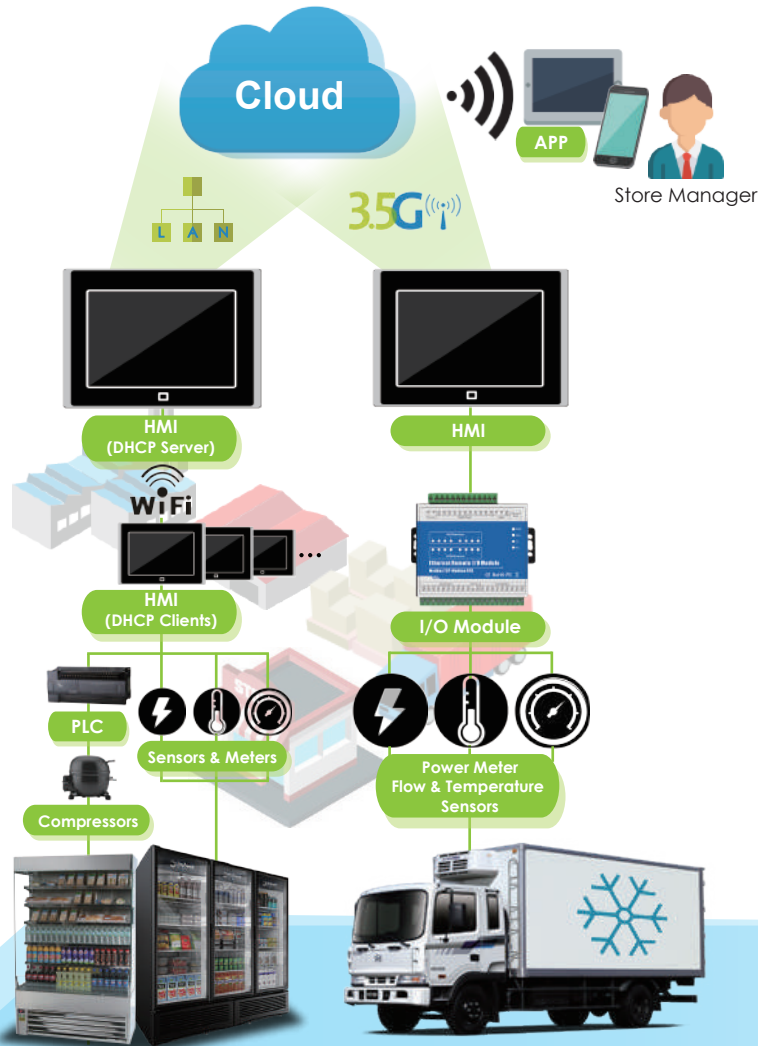
CASE 5. Smart Freezer



Applied Field: Convenience Store / Cold Chain Logistics
Novakon Solutions: N04 / P07 / iFace-Designer

Overview:
Novakon develops Wi-Fi/3.5G wireless connection solutions of both hardware platform and software API for data exchange between a central 7" DHCP Server HMI and 4~5 sets of local 4" DHCP Client HMIs that are connected to freezers in a convenience store as well as in the refrigerated truck, delivering freezer data and event message to remote server as an IoT gateway.

System Diagram



HMI Screenshots



iFACE Designer

Quick Toolbar

Small custom toolbar which can include more frequently used commands.

File Tab

A file menu with functions for project management.

Screen Tab

Quickly alternate between screens for editing.

Screen Manager

Screen can be clicked on for editing, viewing, summarizing current content.

Screen Editing Area

Edit the content of each screen in the project.

Sub-Window Shortcuts

Quick commands to open or to close sub-windows.

Multi-language & Widget states

Choose from multiple languages and control states to view and to edit.

Software Interface Settings

Change the skins or languages for the GUI.

Ribbon

The ribbon contains multiple tabs with groups of functions for editing convenience and project management.

System Widget Library

A rich and elaborate widget library for user to choose from.

User Widget Library

User can also easily create a customized library of widgets.

Compiled Results

Compilation error messages appear in this window so that user can quickly debug.

Zoom, Grid, and Coordinates

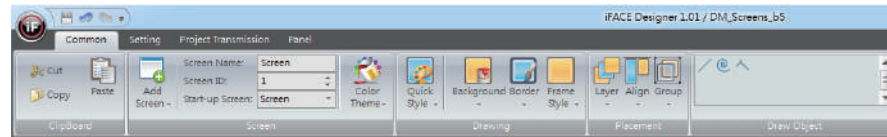
Zoom in or out screens for perfect viewing.
Grid and Coordinates for quickly and easily positioning of the widgets on screen.

Tabs in the Ribbon UI

- Intuitive and clear. Simple and straightforward. Extremely easy.
- Develop projects in a few clicks with easy to reach functions and properties.

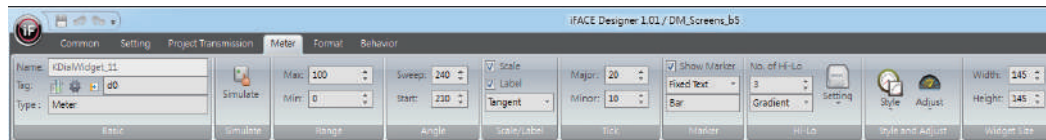
General Settings

Change basic screen settings or the appearance of Screens and Widgets.



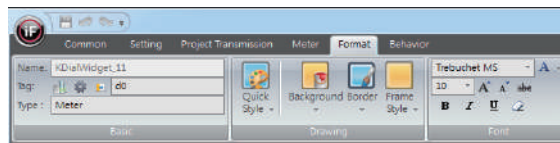
Widget Properties

Change internal properties for each individual Widget.



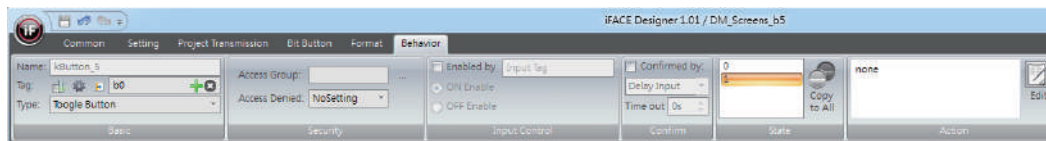
Widget Formatting

Change display formatting options for each individual Widget.



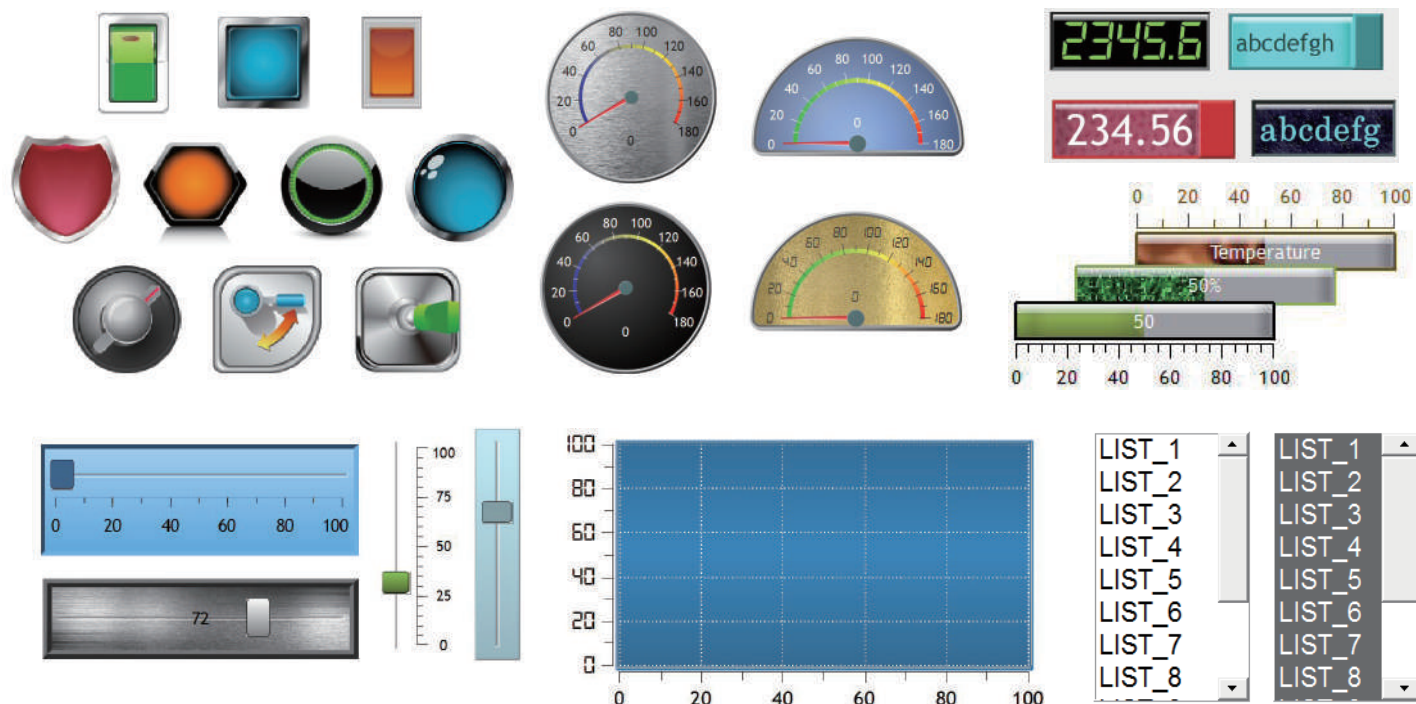
Widget Behavior

Change special behavior settings for each individual Widget.



Elegant and Easy to Use Widgets

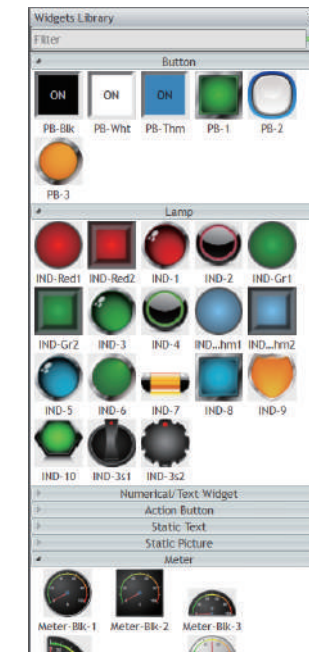
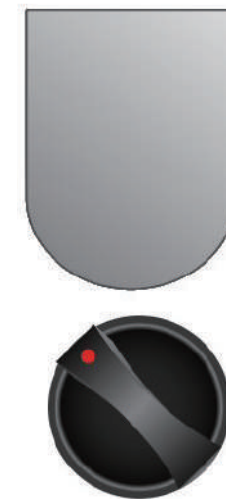
- Refreshingly designed Widgets, elegant and stylish.
- Dynamic Widget selection including Push Buttons, Switches, Action Buttons, Lamps, Numeric & Alphanumeric Options, Bars, Sliders, Meters, Charts, Message Displays, List boxes, and etc.



System Widget Gallery

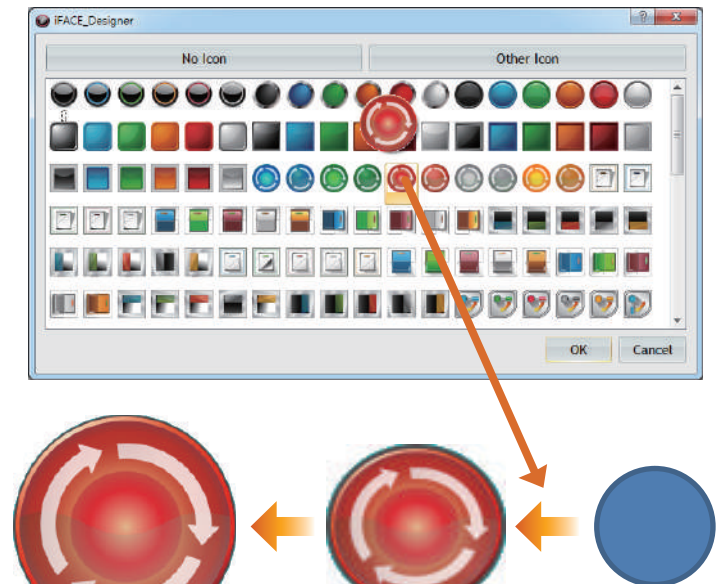
An elegant ready-to-use selection of Widgets may be dragged and dropped directly to the editing area of the screen to help save time of searching and formatting.

Auto Man



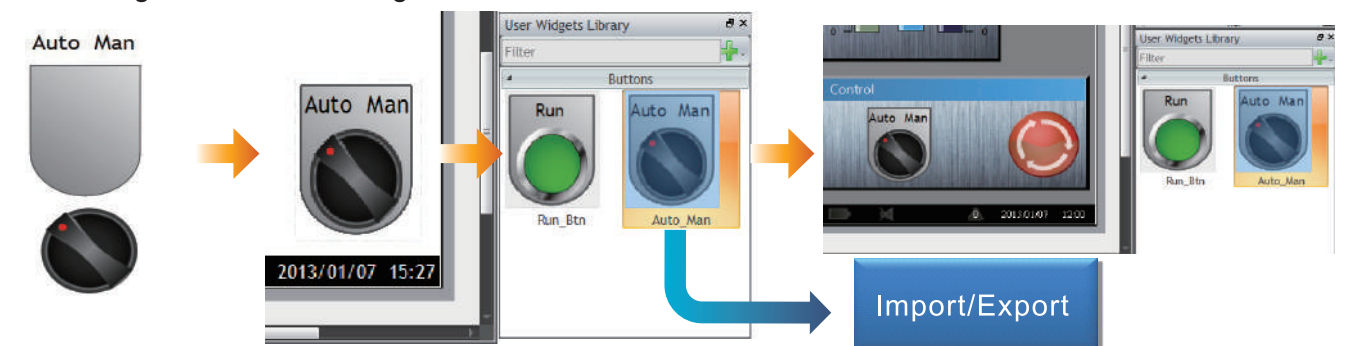
Vector Graphic Library

A gallery of exquisitely designed vector graphics built to meet the needs of every project. Each graphics may be re-sized without compromising graphic quality.



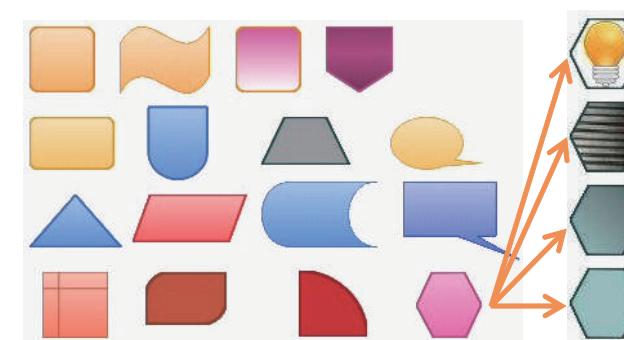
User Widget Library

The User Widget Library allows users to freely create any combination of design elements for a special expression of personal style. Easy import and export options allow user to exchange and share design results.



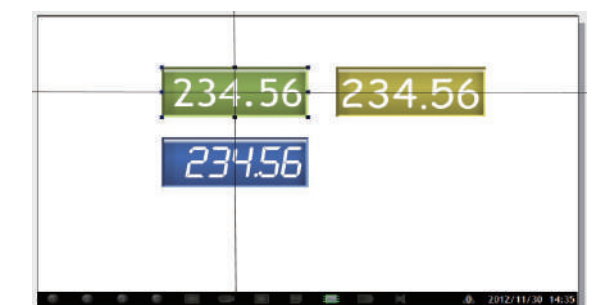
Shape Library

Extensive shape library allows user to apply images or to choose materials for endless design options.



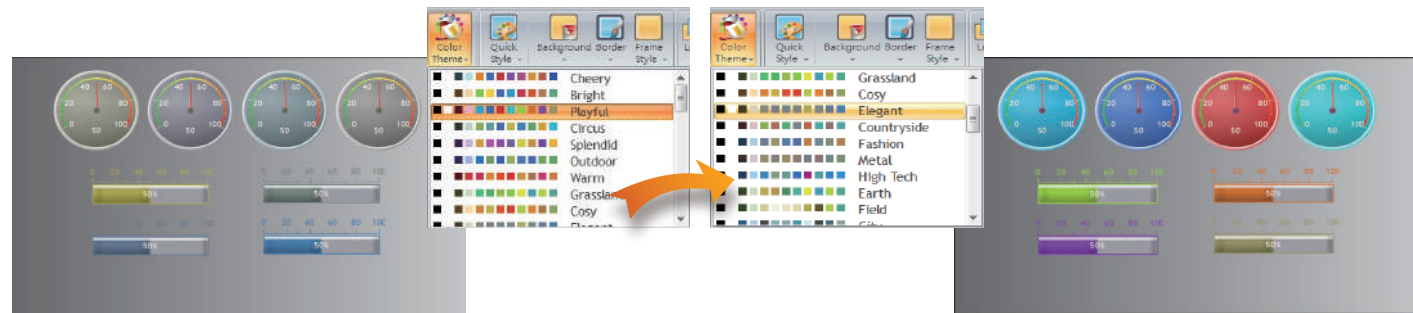
Smart Snaplines

Smart snaplines help align Widgets.



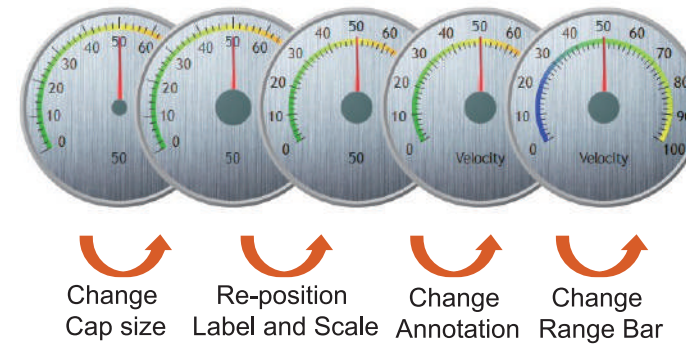
Theme-based Design

Each theme is a set of thoughtfully selected colors, communicating elegance and style. Create a portfolio of widgets with beautiful color at the click of a button. Preview your aesthetic selection by selecting a theme and watching all the Widgets change automatically.



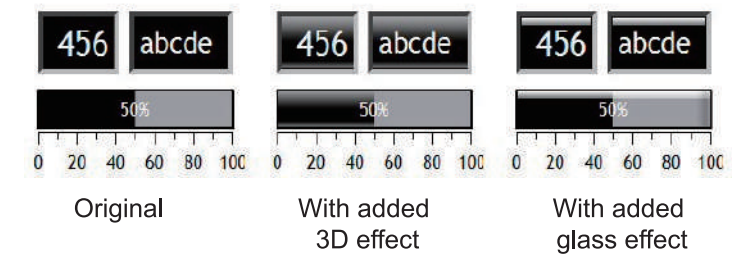
Customizable to the Details

Widgets can be refined to the most detailed of details.



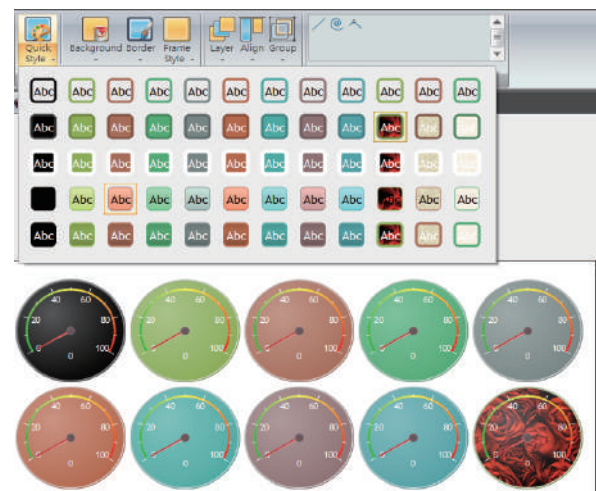
3D and Glass Effect

3D and glass effect can help add extra dimension and texture to each Widget.



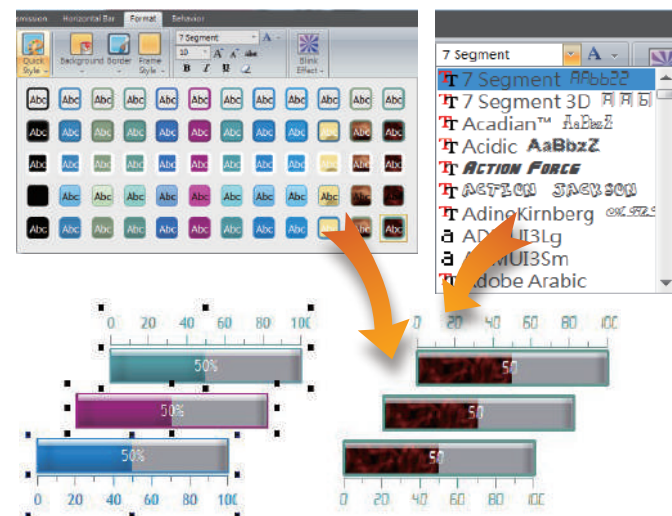
Quick Styles

Rapidly change the fill, border color and font of a Widget through Quick Style.



Common Property Setup

Quickly apply same formatting and style options for similar content.



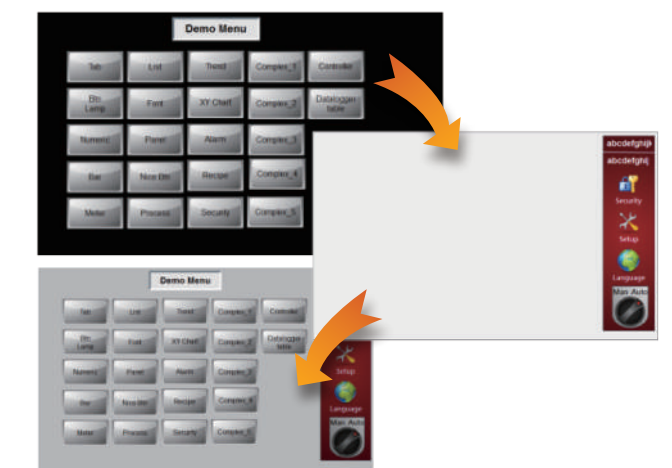
Screen Manager

Screen Manager allows user to create categories for organization and project management needs.



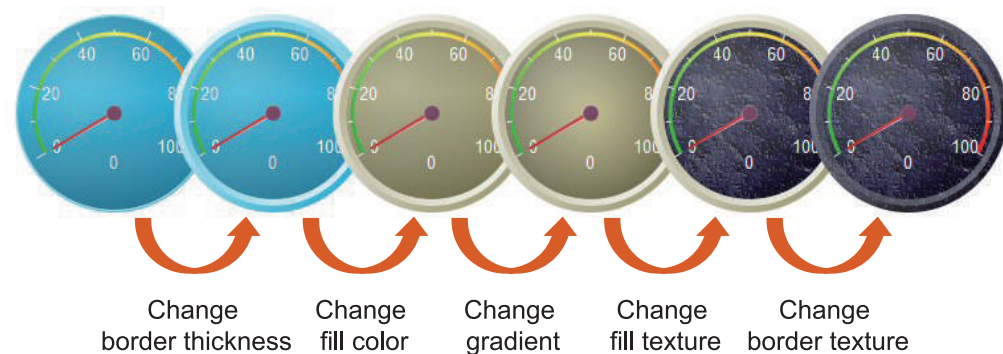
Background Screen

A screens can be designated as a background of any screens so to minimize repetitive editing of common areas.



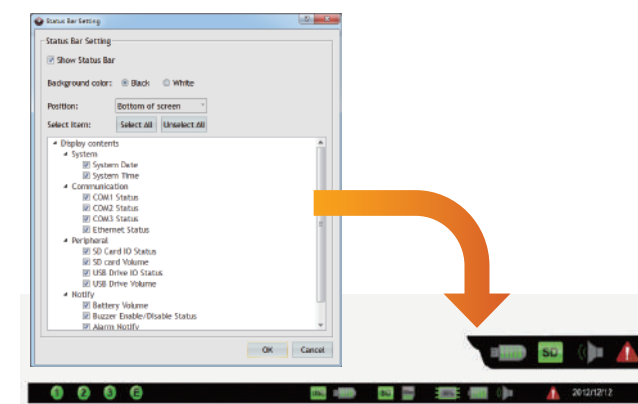
Background and Border

Background is entirely customizable with our selection of themes, colors, images, gradients, or materials. Borders can be set using different frames, themes, or colors, along with the option to change thickness, line types, and materials.



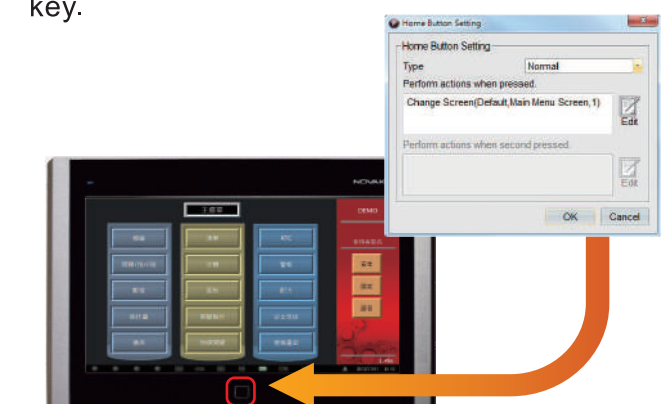
HMI Status Bar

Easy to configure Status Bar can be displayed along the side of the HMI screen.



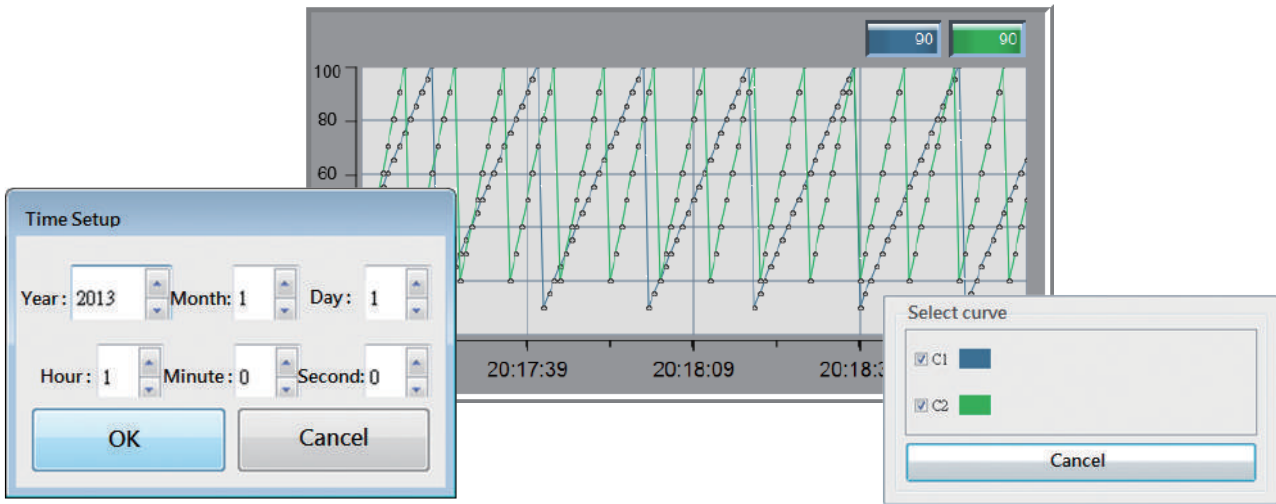
Home Key

A maximum of three actions can be set up for this mechanic key. ie: "Return to Main MENU" key.



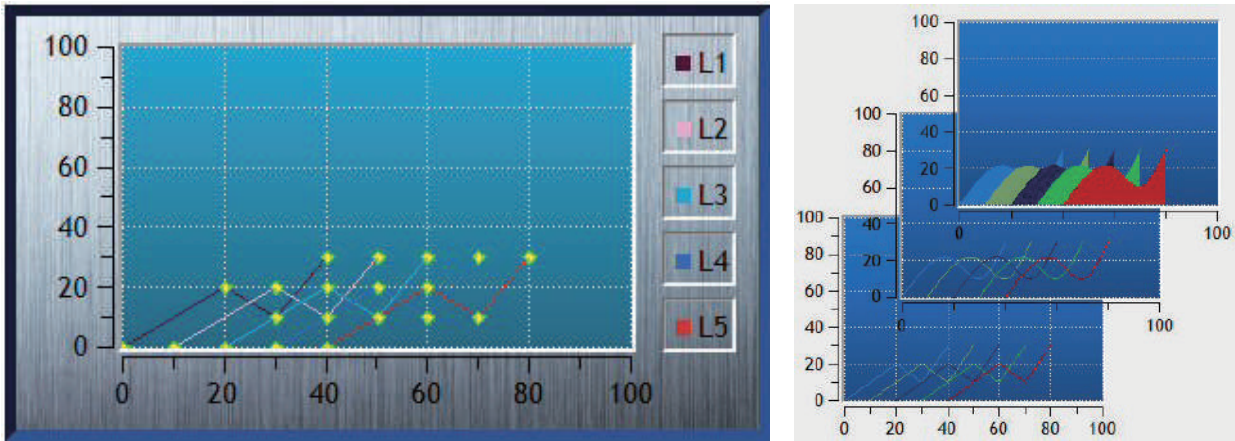
Trend Charts

Display data logs as trend charts allowing to show/hide individual charts and to show charts at a specific time and date.



XY Chart

Choose a clean and concise XY chart with a variety of line types and backgrounds.



Data Table

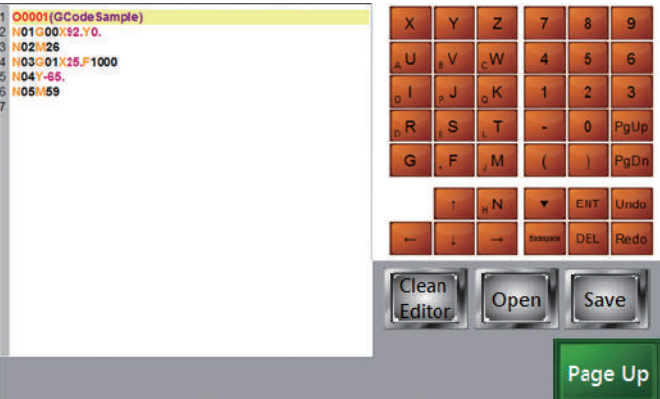
System provides a variety of data tables which can be conveniently applied to alarms and data logs, presenting real-time data in more readable formats.

Alarm Name	Description	Ack	Ack Time	Trigger Count	Enable	State
Alarm 1	Alarm 1 Information	Ack	2011/07/11 11:12:12	0	Enable	Deactive
Alarm 2	Alarm 2 Information	Ack	2011/07/11 11:12:15	2	Enable	Active
Alarm 3	Alarm 3 Information	Ack	2011/07/11 11:12:22	1	Enable	Deactive
Alarm 4	Alarm 4 Information	Ack	2011/07/11 11:12:52	5	Enable	Deactive

Link Name	Display Name	Driver	HMI Port	IP	Baud R
Link 1	Station 0	offline	COM1		9600
Link 1	Station 1	offline	COM1		9600
Link 2	Station 0	fx3u_enet_adp	Ethernet	192.168.0.194	

CNC G-Code Editor

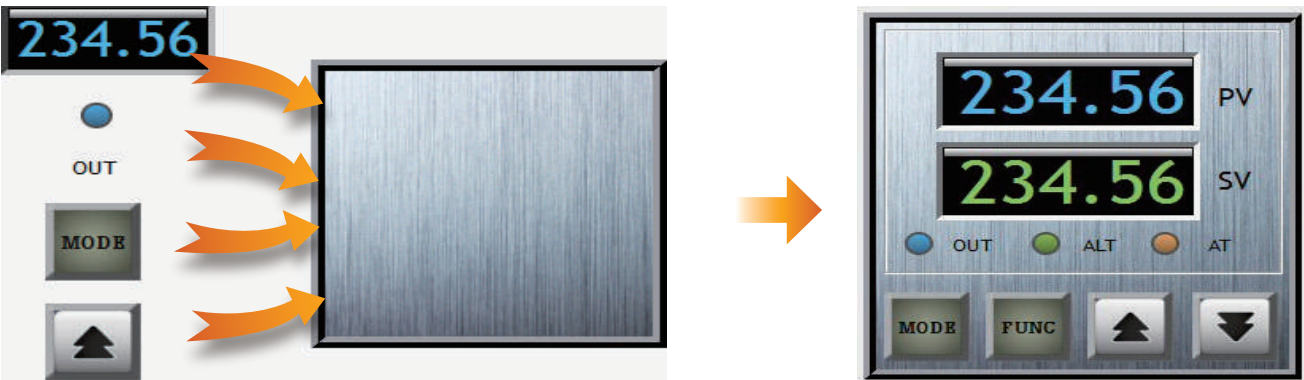
Supports CNC controller as well as G-Code Editor for CNC.



Widget Container — Panel

Widgets placed in one container will move seamlessly together for ease of transport and organization.

Allows user to add or move around any Widgets or pictures so that a panel Widget can easily be turned into an operations panel.



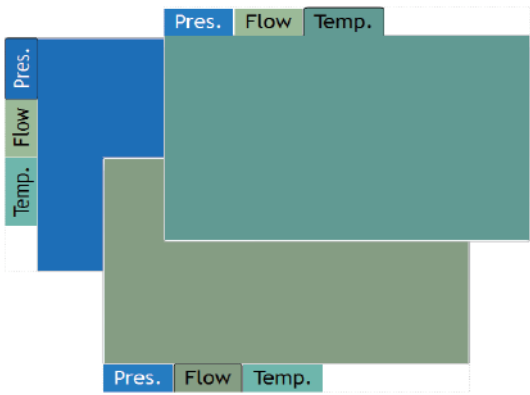
Widget Container — Group Box

Group box allows Widgets to be placed together within a text border to organize as a functional block.



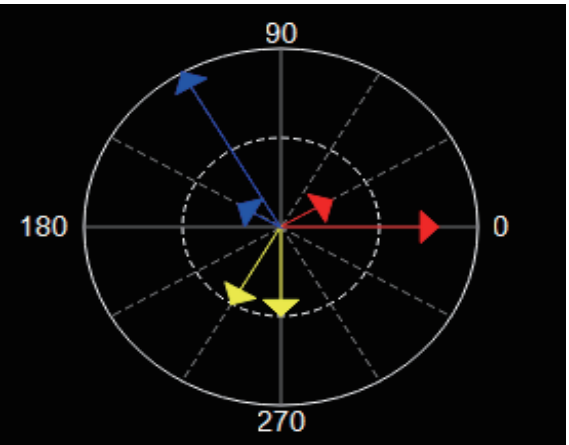
Widget Container — Tab

Each tab is also a sub-container, which may contain additional Widgets. Clicking a tab will instantly displays the contents within that tab.



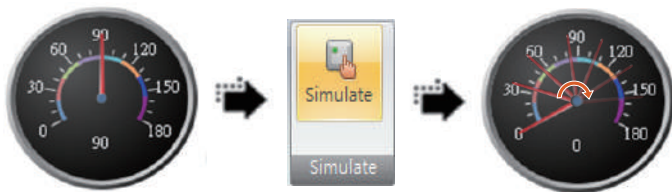
Three-Phase Vector Diagram

Voltage, Current and Phase are all displayed on one comprehensive diagram.



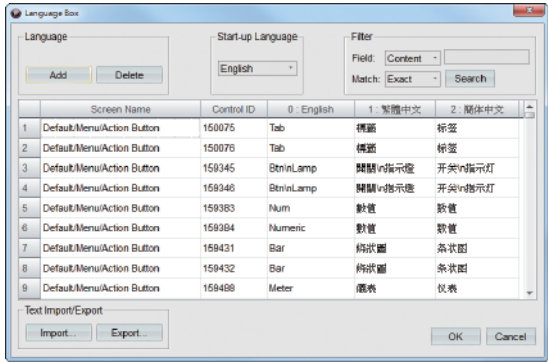
Widget Simulation

Each Widget can be simulated and previewed in the editing area so there is no need to compile to see the result.



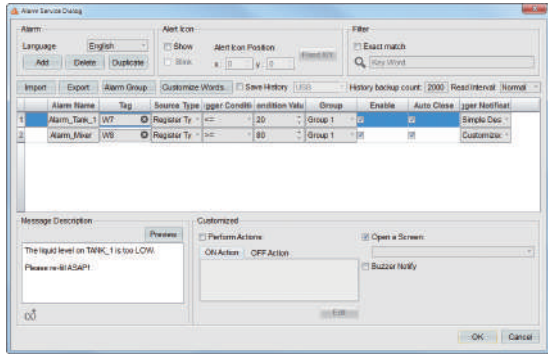
Multi-Language Support

System can support up to 16 different languages. Set up can be found in the Language dialog box, in which preferred wording can be edited directly or exported to text file for future editing. Display language can be switched via the command buttons.



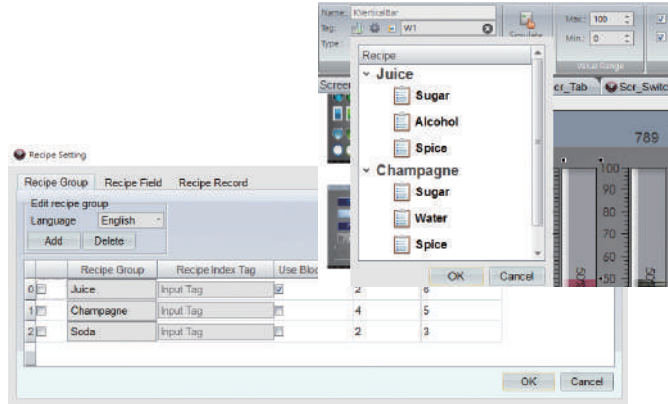
Alarm

Offers a variety of alarm tables, actions that alarms can be set to trigger, alarm notification dialogs with actions to instantly perform troubleshooting tasks.



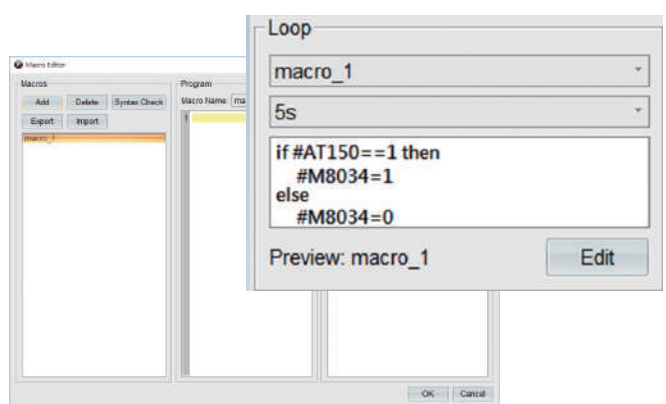
Recipe

Recipe function includes three built-in recipe selectors for convenient application, modification and viewing. Each recipe data field can also seamlessly link to Widgets.



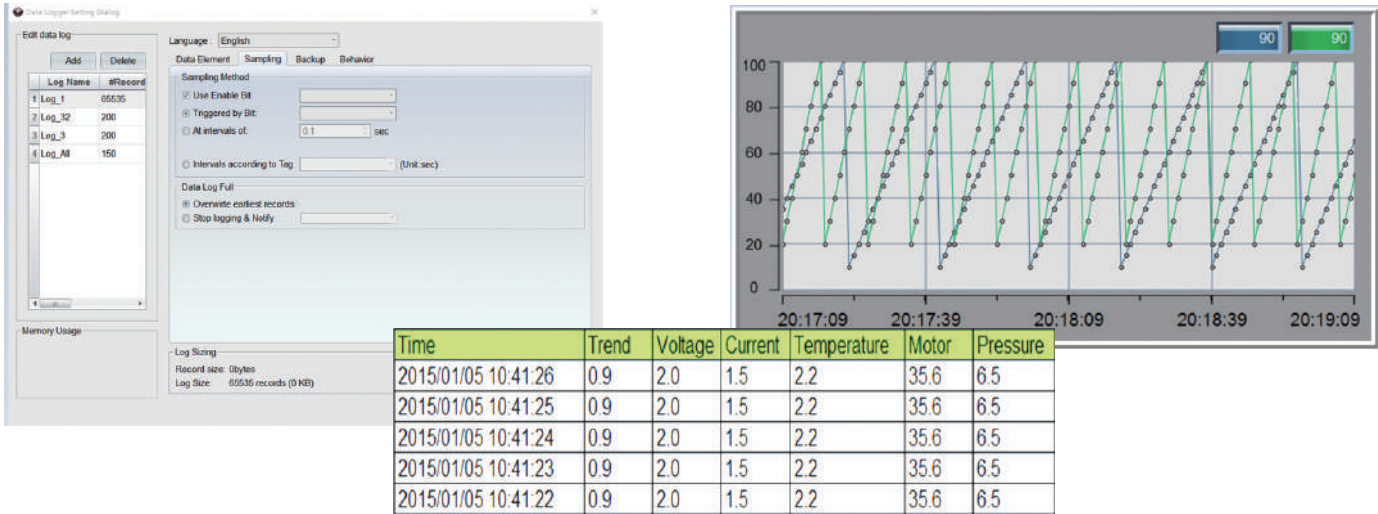
Macro

A powerful yet simple scripting language that could develop programs for data manipulation, data conversion, and data movement between HMI and PLC. A macro could be executed when a screen is open or close, or cyclically.



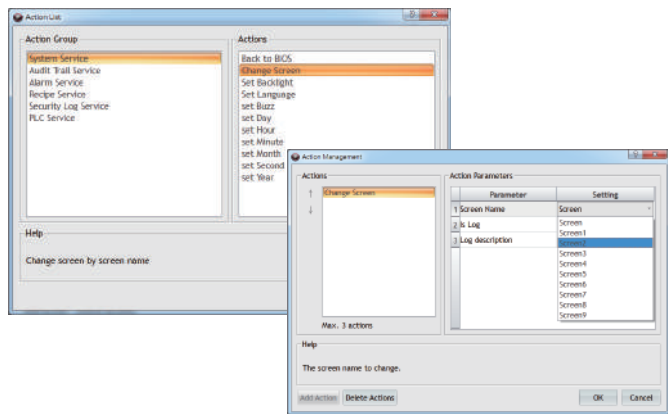
Data Log

Data logs can be set according to various conditions and sampling rates; can define up to 16 data logs with a max of 32 data fields each log. Data fields supports all data types. Data logs could be visualized as trend charts and data tables.



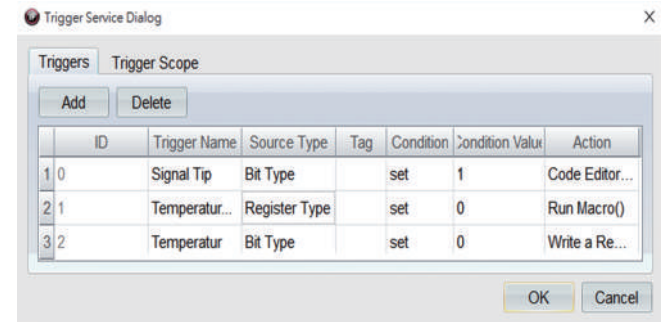
Action

A maximum of 3 actions could be defined, ie. "Change screens" or "Write Value to PLC". Used along with the macros programs, actions can save user PLC programming time.



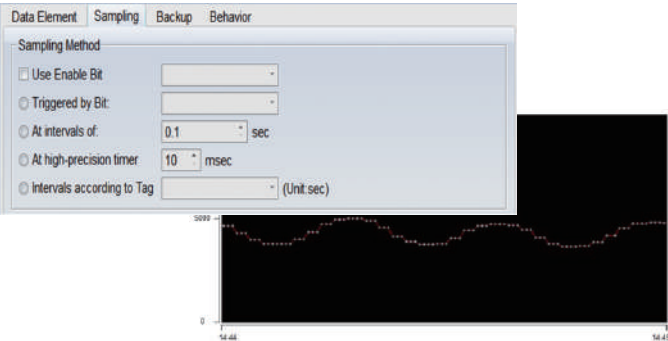
Powerful Triggers

Triggers can be programmed according to the conditions on the tags; once a condition is met, the trigger is active and associated actions are performed instantly.



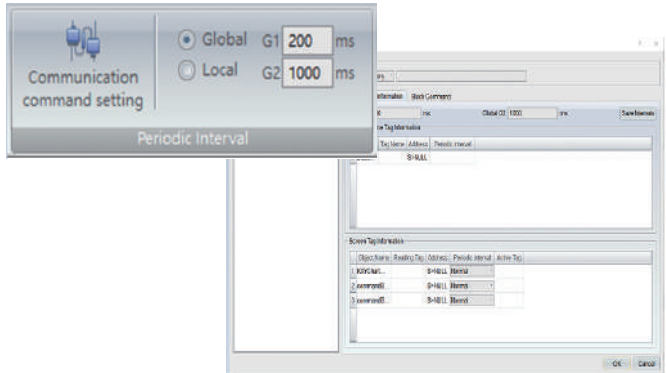
High-Precision Sampling Time

Provides high-precision data sampling times, no longer having to be confined to traditional HMI sampling limitations. (fastest time 10ms, limited to high-end models only)

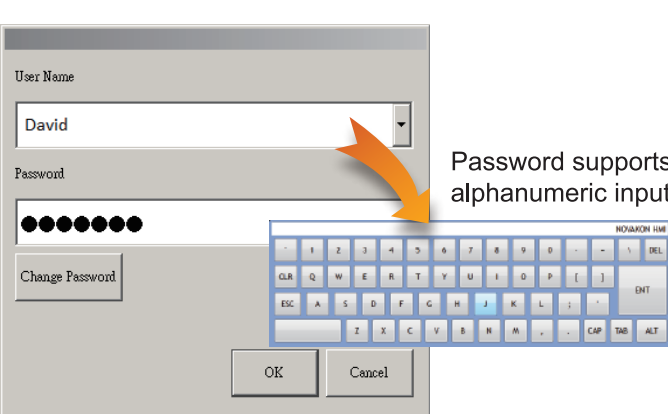


Adjustable Data Refresh Rate

Can set the data refresh rates on the tags to maximize the usage of the limited communication bandwidth for improving required data refresh.

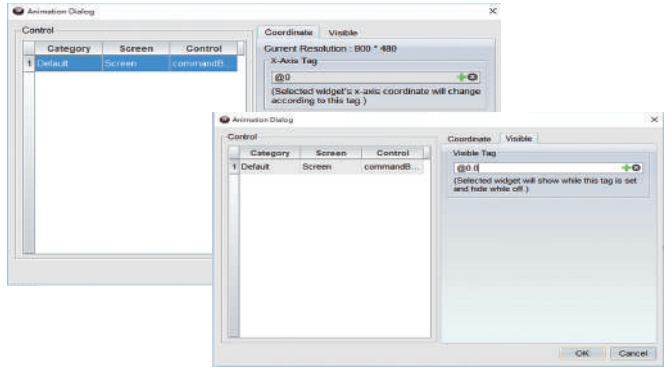


Security



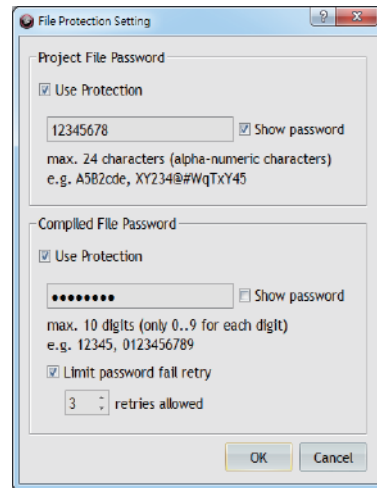
Dynamic Appearance

Widget X/Y positions and its appearance can be dynamically changed in runtime for special results.



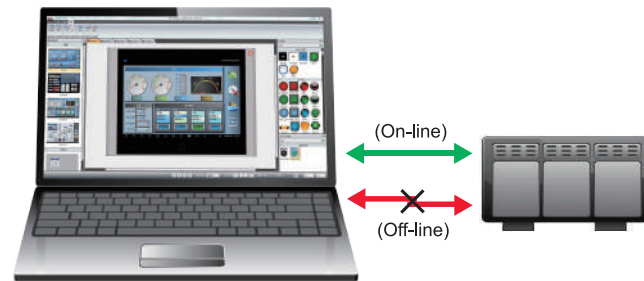
Double File Protection

File Protection dialog box contains two levels of security with “Project File Password” and “Compiled File Password”. “Password Retry Limit” can also be set.



Off-line and On-line Simulation

See how your application works with/without connection to controllers right on you PC without having to download to the HMI every time.



External Barcode Reader

Supports various barcode readers with USB or serial connection. Bar codes can be written directly into the specified addresses, without needing to convert through a third-party program.



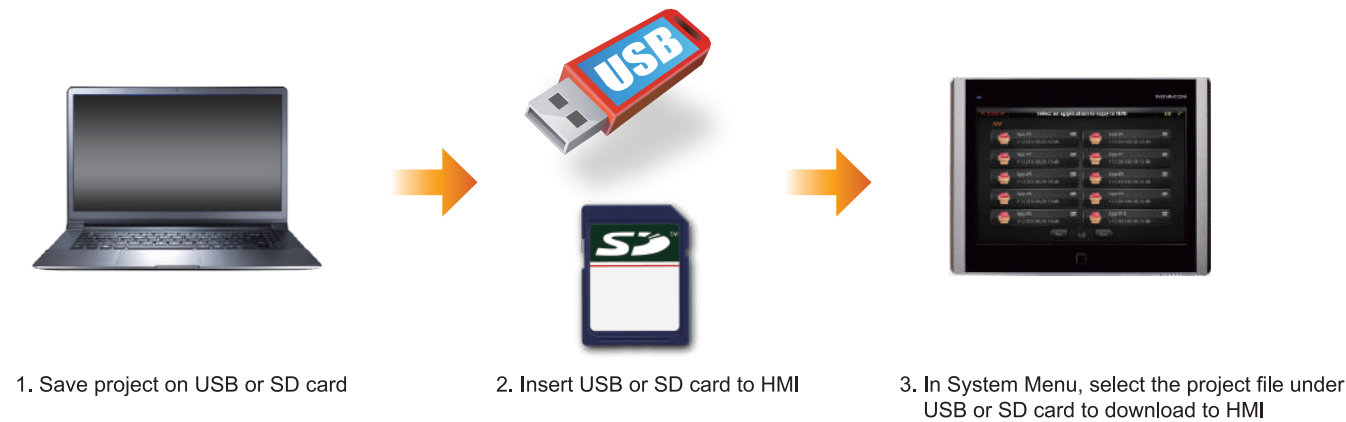
External Keyboard

Support the use of a USB keyboard; allowing a variety of key combinations to bind to widgets, giving users additional input method besides touch.



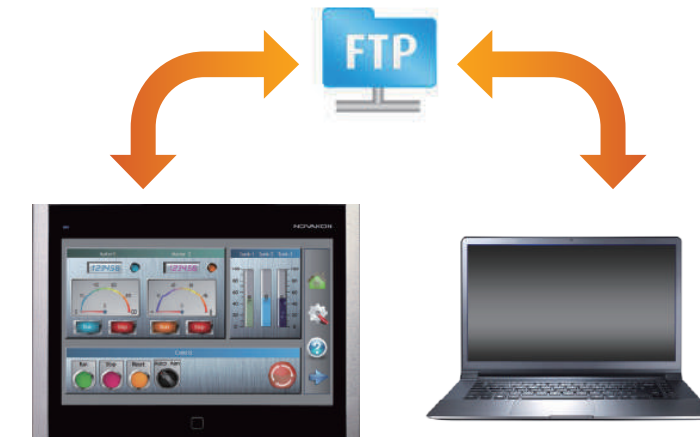
Download to HMI

Quickly download projects to the HMI through the use of any SD card or USB memory storage. Allowing the selection of any application files in the storage to download.



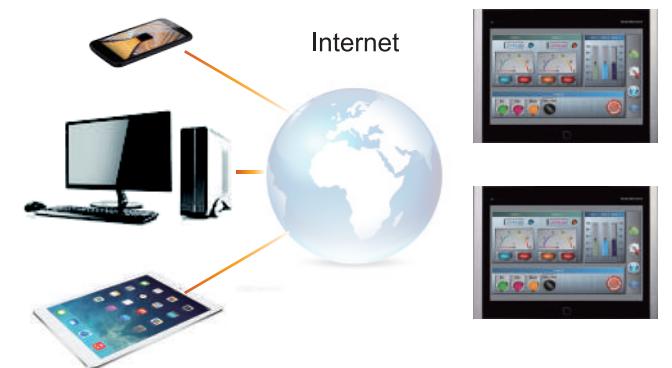
FTP File Transfer

Supports FTP protocols, allowing users to easily obtain HMI data logs, historical alarm tables, recipes, Screen captures, and to upload or download projects from or to HMI.

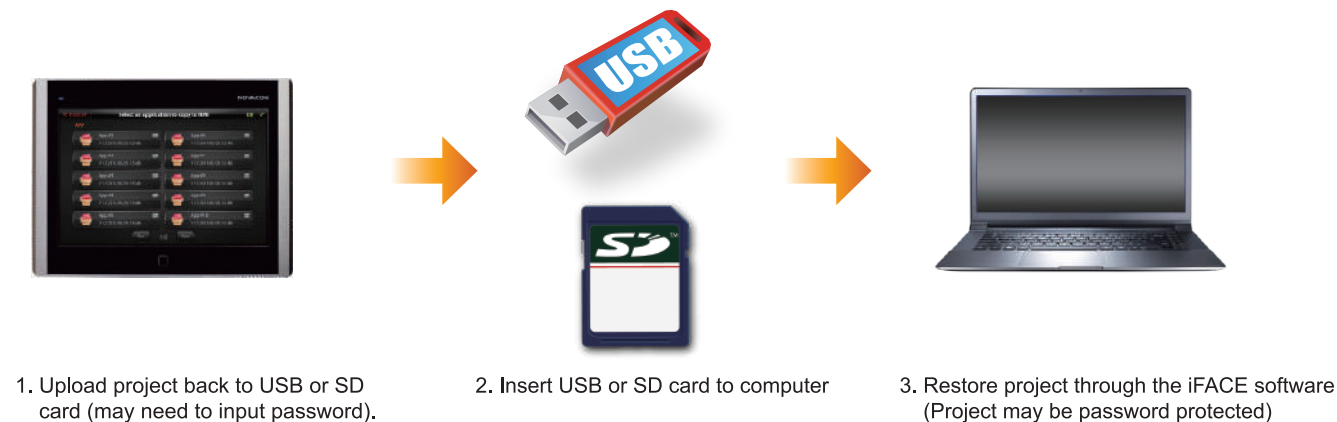


VNC Remote Monitoring

Via VNC connection, HMI can be monitored or accessed remotely by computer, smartphone or tablet, allowing users to be in full control anytime and anywhere



Restore Project to PC



Simple HMI System Menu

Simple user interface designed to configure HMI hardware parameters effortlessly



Menu Language Settings

Language settings allow user to select preferred BIOS language



Dual Ethernet Ports

With dual ethernet ports, HMI functions as the gateway between internal industrial communications network and external wide area network (WAN).



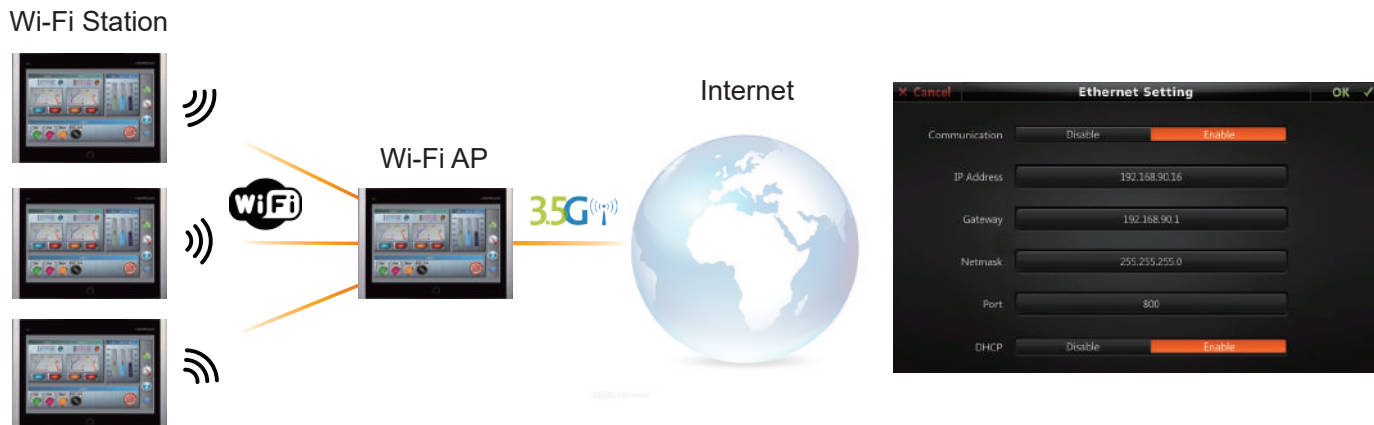
Wireless Communications

Support wireless communications through external USB dongles: Wi-Fi (802.11bgn), Bluetooth (2.4GHz, V4.0), GSM (HSDPA 3.5G), with simple setup in HMI System Menu.



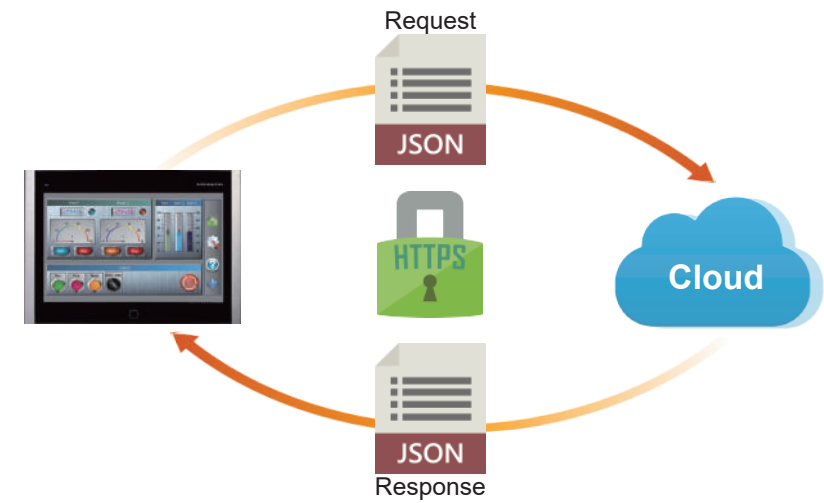
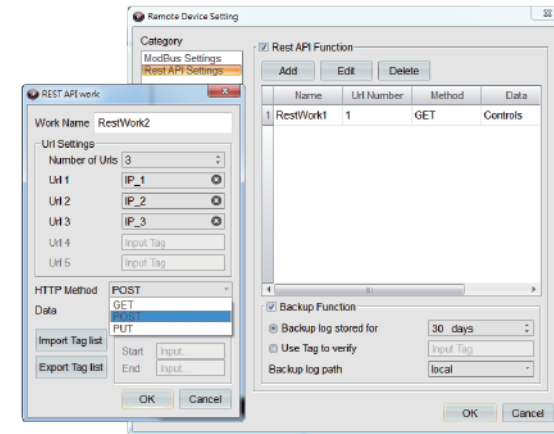
Wi-Fi AP / Station Modes

Support Wi-Fi AP (Access Point) & Station Modes, one central HMI can be treated as the Wi-Fi AP, connected with several HMIs as Wi-Fi Stations, gathering data and transport them to the Wide Area Network (WAN).



RESTful API Service

Via RESTful API Service, HMI sends requests and receives responses to and from the cloud in JSON format to fulfill the requirements of IoT applications while avoiding security breaches with HTTPS encryption algorithm.



Automation Protocols

Support various automation protocols, including Modbus (RTU/TCP/ASCII), CANopen for communications in different applications with PLCs, controllers, and I/O modules, etc. through physical serial (RS-232/422/485) or ethernet ports.



Product Overview

Product Outlook



Entry N Series

ARM 9 (400MHz)



3.5" Keypad

4.3"

7.0"

Standard P Series

ARM Cortex A8 (1GHz)



4.3"

7.0"

10.2"

12.1" Aluminum

15.6"

Aluminum

Performance S Series

ARM Cortex A9 (1GHz Dual-Lite)



7.0"

10.2"

12.1" Aluminum

15.6"

Aluminum



3.5"

4.3"



7"

10.2"



12.1"

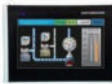
15.6"

HMI — N Series (ARM9 400MHz)



	Model	NK03	N04	N07
Display	Type	3.5" TFT	4.3" TFT	7" TFT
	Resolution	320x240	480x272	800x480
	Color Depth	16.7M		
	Backlight Type	LED		
	Brightness	300 cd/m²	330 cd/m²	300 cd/m²
	Backlight Lifetime	20,000 hr	20,000 hr	20,000 hr
	Contrast Ratio	500:1	500:1	500:1
	View Angle	140/130 (H/V)	140/120 (H/V)	140/120 (H/V)
	Dimming	20 levels		
System Resources	CPU	ARM 9 (400 MHz)		
	SDRAM Memory	128MB		
	Onboard Flash	128MB NAND Flash		
	F-RAM	8K		
	RTC	Yes		
Interface	Touch Screen	—	4 Wire Resistive Analog	
	Front	1 x Power Indicator		1 x Power Indicator, 1 x Mechanic Switch
	COM1	1 x RS232, 1 x RS422/485		RS232/422/485
	COM2	—		RS232/422/485
	COM3	—		RS232/485
	Ethernet	1 x 10/100Mbit		
	USB	1 x Type B (Device), 1 x Type A (Host)		
	Memory Card	—		SD Card
	Audio	—		
	Video Output	—		
	Expansion	—	2.54 Pin Header (20pin) connector for 4 in/5 out/I²C/SPI/UART/VCC/GND (Option)	
Ratings	Power Input	19.2~28.8V, Isolated Power		
	Power Consumption	6W	6W	8W
	Weight	0.33 Kg	0.25 Kg	0.68 Kg
	Battery	CR 2032 Replaceable		
Environment	Operating Temp.	0~50°C	0~45°C	0~50°C
	Storage Temp.	-20~60°C		
	Moisture	10% ~ 90% RH (non-condensing) @ 40°C		
Mechanical	Construction	Plastic		Painted Plastic Front Bezel & Chassis
	IP Rating	IP65 (Front)		
	Mounting(mm)	Panel Mount		Panel Mount,VESA 75 x 75
	Dimension(mm)	178.0 x 107.3 x 49.5	127.7 x 89.7 x 36.7	199.8 x 147.8 x 39.8
	Cut-out(mm)	161.0 x 93.5	119.3 x 81.3	185.2 x 133.2
Approvals	ESD Protection	—		Level 4 (Contact 8KV, Air-Gap 15KV), Class A
	CE/FCC	CE/FCC (EN 61000-6-4, EN 61000-6-2)		
System Support		Linux Kernel 2.21		

HMI — P Series (ARM Cortex-A8 1GHz)



	Model	P04	P07	P10	P12	P15
Display	Type	4.3" TFT	7" TFT	10.2" TFT	12.1" TFT	15.6" TFT
	Resolution	480x272	800x480	800x480	1280x800	1366x768
	Color Depth	16.7M				
	Backlight Type	LED				
	Brightness	330 cd/m ²	300 cd/m ²	350 cd/m ²	450 cd/m ²	500 cd/m ²
	Backlight Lifetime	20,000 hr	20,000 hr	20,000 hr	50,000 hr	50,000 hr
	Contrast Ratio	500:1	500:1	300:1	1000:1	600:1
	View Angle	140/120 (H/V)	140/120 (H/V)	130/110 (H/V)	170/170 (H/V)	160/160 (H/V)
	Dimming	20 levels				
System Resources	CPU	ARM Cortex-A8 (1GHz)				
	SDRAM Memory	512MB				
	Onboard Flash	4GB Embedded MMC				
	F-RAM	32K				
	RTC	Yes				
Interface	Touch Screen	4 Wire Resistive Analog			5 Wire Resistive Analog	
	Front	1 x Power Indicator	1 x Power Indicator, 1 x Mechanic Switch			
	COM1	1 x RS232, 1 x RS422/485 or CAN Bus (Option)	RS232/422/485			
	COM2	—	RS232/422/485			
	COM3	—	RS232/485 or CAN Bus (Option)			
	Ethernet	1 x 10/100Mbit	1 x 10/100Mbit (Default) ; 2 x 10/100Mbit (Option)			
	USB	1 x Type B (Device), 1 x Type A (Host)				
	Memory Card	—	SD Card			
	Audio	—				
	Expansion	2.54 Pin Header (20pin) connector for 4 in/5 out/I ² C/SPI/UART/VCC/GND (Option)				
Ratings	Power Input	19.2~28.8V, Isolated Power				
	Power Consumption	6W	8W	10W	22W	28W
	Weight	0.25 Kg	0.68 Kg	1.1 Kg	4.3 Kg	5.8 Kg
	Battery	CR 2032 Replaceable				
Environment	Operating Temp.	0~45°C	0~50°C			
	Storage Temp.	-20~60°C				
	Moisture	10% ~ 90% RH (non-condensing) @ 40°C				
Mechanical	Construction	Plastic			Aluminum Front Bezel & Steel Chassis	
	IP Rating	IP65 (Front)				
	Mounting(mm)	Panel Mount	Panel Mount,VESA 75 x 75		Panel Mount,VESA 100 x 100	
	Dimension(mm)	127.7 x 89.7 x 36.7	199.8 x 147.8 x 39.8	279.5 x 195.5 x 39.5	319.0 x 225.0 x 56.8	408.8 x 260.9 x 50.6
	Cut-out(mm)	119.3 x 81.3	185.2 x 133.2	260.2 x 177.2	305.7 x 211.7	394.5 x 246.6
Approvals	ESD Protection	—	Level 4 (Contact 8KV, Air-Gap 15KV), Class A			
	CE/FCC	CE/FCC (EN 61000-6-4, EN 61000-6-2)				
Optional	Accessories	Wi-Fi USB Dongle (802.11b/g/n) & Wi-Fi Antenna RP-SMA M-F Connector				
System Support		Linux Kernel 3.14				

HMI — S Series (ARM Cortex-A9 1GHz Dual-Lite)



	Model	S07	S10	S12	S15
Display	Type	7" TFT	10.2" TFT	12.1" TFT	15.6" TFT
	Resolution	800x480	800x480	1280x800	1366x768
	Color Depth	16.7M			
	Backlight Type	LED			
	Brightness	300 cd/m²	350 cd/m²	450 cd/m²	500 cd/m²
	Backlight Lifetime	20,000 hr	20,000hr	50,000 hr	50,000 hr
	Contrast Ratio	500:1	300:1	1000:1	600:1
	View Angle	140/120 (H/V)	130/110 (H/V)	170/170 (H/V)	160/160 (H/V)
	Dimming	20 levels			
System Resources	CPU	ARM Cortex-A9 (1GHz Dual-Lite)			
	SDRAM Memory	1GB			
	Onboard Flash	4GB, 8bit Embedded MMC			
	F-RAM	32K			
	RTC	Yes			
Interface	Touch Screen	4 Wire Resistive Analog		5 Wire Resistive Analog	
	Front	1 x Power Indicator, 1 x Mechanic Switch			
	COM1	RS232/422/485			
	COM2	RS232/422/485			
	COM3	RS232/485 or CAN Bus (Option)			
	Ethernet	1 x 10/100/1000Mbit			
	USB	1 x Type B (Device), 1 x Type A (Host)			
	Memory Card	SD Card			
	Expansion	2.54 Pin Header (20pin) connector for 4 in/5 out/I²C/SPI/UART/VCC/GND (Option)			
Ratings	Power Input	19.2~28.8V, Isolated Power			
	Power Consumption	8W	10W	22W	28W
	Weight	0.68 Kg	1.1 Kg	4.3 Kg	5.8 Kg
	Battery	CR 2032 Replaceable			
Environment	Operating Temp.	0~50°C			
	Storage Temp.	-20~60°C			
	Moisture	10% ~ 90% RH (non-condensing) @ 40°C			
Mechanical	Construction	Plastic		Aluminum front bezel & Steel Chassis	
	IP Rating	IP65 (Front)			
	Mounting(mm)	Panel Mount,VESA 75 x 75		Panel Mount,VESA 100 x 100	
	Dimension(mm)	199.8 x 147.8 x 39.8	279.5 x 195.5 x 39.5	319.0 x 225.0 x 56.8	408.8 x 260.9 x 50.6
	Cut-out(mm)	185.2 x 133.2	260.2 x 177.2	305.7 x 211.7	394.5 x 246.6
Approvals	ESD Protection	Level 4 (Contact Discharge 8KV, Air-Gap Discharge 15KV), Class A			
	CE/FCC	CE/FCC (EN 61000-6-4, EN 61000-6-2)			
Software	Application	HTML5 supported Web Browser			
Optional	Accessories	Wi-Fi USB Dongle (802.11b/g/n) & Wi-Fi Antenna RP-SMA M-F Connector			
System Support		Android 6.0.1 Linux Kernel 4.1.15			

Supported PLC / Controller List

Brand	Series	Support Models
Agilent	XGS-600 Gauge Controller	All Models
Allen-Bradley	CompactLogix Ethernet	All Models
	MicroLogix DF1 RS232	All Models
	MicroLogix Ethernet	All Models
	Micro800 Ethernet	All Models
	PLC5 DF1 CRC	All Models
Animatics	SmartMotor D-style RS232	All Models
AWISELINK	IPP-5100	All Models
Barcode	Barcode Reader / Printer	Most Models
BACnet	BELIMO T24-V42BAC	All Models
CTC Control	CTC Binary	All Models
Delta	DVP	All Models
ESTIC	Handy2000 Type4	All Models
FATEK	FBs/FBe	All Models
	FBs/FBe TCP	All Models
HUST	CNC Controller	All Models
JECTOR	Controller	All Models
KEYENCE	KV-1000	All Models
	KV-L20V Host Link / KV-nano	All Models
	KV-5000	All Models
KOYO	Direct DL Series	All Models
Lust	LustBus ServoC/CDE Series	All Models
Mitsubishi	AJ71	All Models
	AJ71 for AnA/AnU	All Models
	AJ71 Format4	All Models
	FR-A700	All Models
	FX Series	FX0N, FX1S
	FX/FX2N Series 232/485BD	All Models
	FX2N Series	FX1N, FX2N
	FX3U	FX3U, FX3UC, FX3G
	FX3U Series 232 485BD	All Models
	FX3U-ENET-ADP	All Models
	Q Series	Q02H, Q06H, Q12H
	QJ71C24/QJ71E71 Series	All Models
	FX5U Ethernet	All Models
	Servo MR-J4	All Models

Brand	Series	Support Models
MODBUS	Modbus RTU Master (HMI as RTU slave)	All Models
	Modbus TCP Master (HMI as TCP slave)	All Models
	Modbus RTU Slave	Most Models
	Modbus RTU Slave (Not Optimized)	All Models
	Modbus TCP Slave	Most Models
	Modbus RTU Slave (Not Optimized)	All Models
MOTRONA	MKS MC700 Motion Controller	All Models
Omron	C Series	CQM1H, C200H, TPM1A, CP1E, CP1L
	CS/CJ Series	All Models
	CS/CJ Series FINS TCP	All Models
OPTEX	CD33 Series Sensor	All Models
	CD5 Series Sensor	All Models
Panasonic	FP Series	All Models
PBA Systems	MaxTune VarCom	All Models
Siemens	S7-200 PPI	All Models
	ISO on TCP	All Models
	S5 PG Port	All Models
TECO	TP03 Series	All Models
	AC Servo TSDA Series	All Models
Vigor	VS/ VB/VH/M Series	All Models
Yamatake	DCP30	All Models
	DMC50	All Models
	SDC35/SDC45	All Models
Yokogawa	NX-D15/25	All Models
	FA-M3 Series TCP	All Models