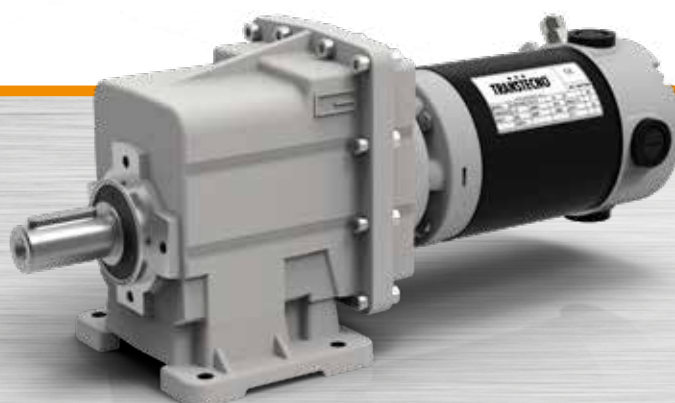
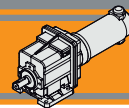




Ferrite

Motoriduttori CC ad ingranaggi cilindrici
DC helical in-line gearmotors

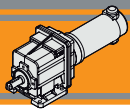




Indice	Index	Pag. Page
Caratteristiche tecniche	<i>Technical features</i>	L2
Designazione	<i>Classification</i>	L2
Sensi di rotazione	<i>Direction of rotation</i>	L3
Lubrificazione	<i>Lubrication</i>	L3
Simbologia	<i>Symbols</i>	L3
Carichi radiali	<i>Radial loads</i>	L4
Motori applicabili	<i>IEC Motor adapters</i>	L4
Dati tecnici per servizio S2	<i>Technical data for S2 duty</i>	L5
Dimensioni	<i>Dimensions</i>	L9

Questa sezione annulla e sostituisce ogni precedente edizione o revisione. Qualora questa sezione non Vi sia giunta in distribuzione controllata, l'aggiornamento dei dati ivi contenuto non è assicurato. **In tal caso la versione più aggiornata è disponibile sul nostro sito internet www.transtecno.com**

This section replaces any previous edition and revision. If you obtained this catalogue other than through controlled distribution channels, the most up to date content is not guaranteed. In this case the latest version is available on our web site www.transtecno.com



Caratteristiche tecniche

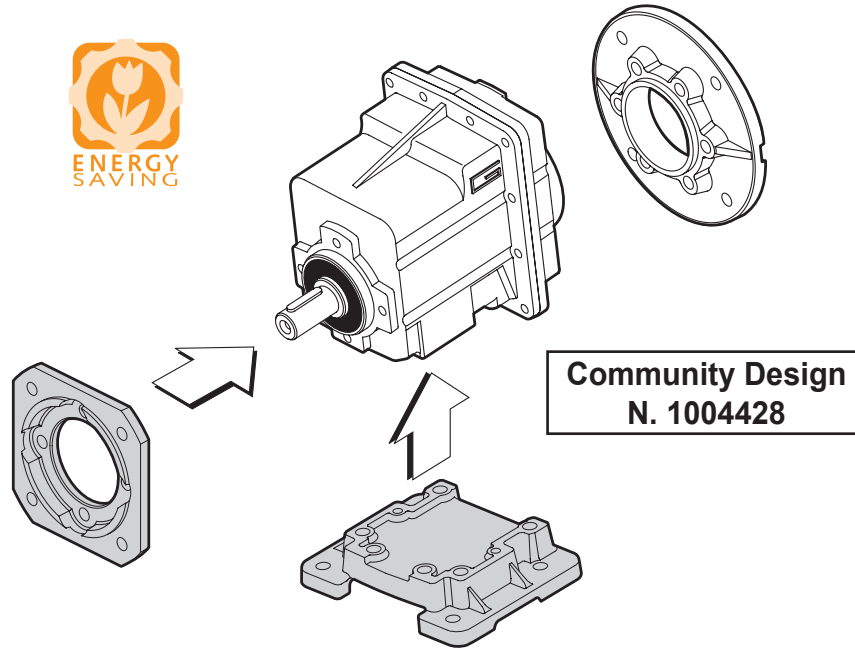
Le caratteristiche principali dei motoriduttori CC ad ingranaggi cilindrici a magneti permanenti in ferrite serie ECMG sono:

- Alimentazione in bassa tensione 12/24 Vcc
- Possibilità di montaggio encoder
- Potenze motore disponibili da 100 a 800W S2
- Magneti in ferrite
- Carcasse dei riduttori in pressofusione di alluminio
- Lubrificazione permanente con olio sintetico
- Ingranaggi sempre rettificati

Technical features

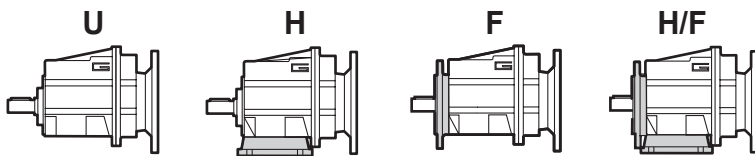
The main features of ECMG ferrite permanent magnets DC helical in-line gearmotors range are:

- Low voltage power supply 12/24 Vdc
- Suitable for encoder assembly
- Motor power ratings available from 100 to 800W S2
- Ferrite magnets
- Die-cast aluminum housing
- Permanent synthetic oil long-life lubrication
- Ground helical gears

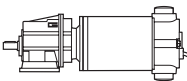


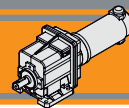
Designazione

Classification



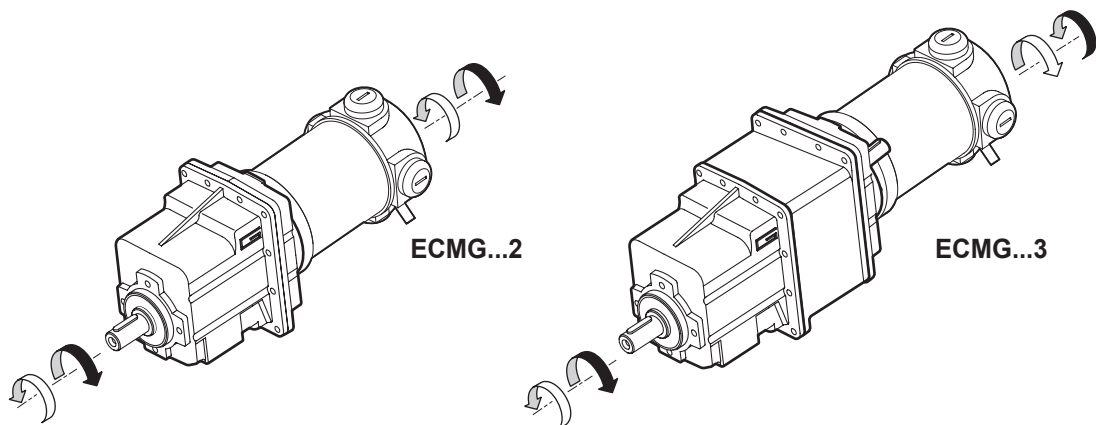
MOTORIDUTTORE / GEARMOTOR

ECMG	100/002						U	8.99	D20	240
Tipo Type	Grandezza Size						Versione Version	Rapporto Ratio	Albero uscita Output shaft	Versione motore Motor version
ECMG 	070/002	100/002	180/002	250/002	350/002	600/002	U... H... F... H.../F...	vedi tabelle see tables	vedi tabelle see tables	120 240 24E
	070/012	100/012	180/012	250/012	350/012	600/012				
	070/013	100/013	180/013	250/013	350/013	600/013				
	070/022	100/022	180/022	250/022	350/022	600/022				
	070/023	100/023	180/023	250/023	350/023	600/023				
	070/033	100/033	180/033	250/033	350/032	600/032				
	070/043	100/043	180/043	250/043	350/033	600/033				
					350/042	600/042				
					350/043	600/043				



Sensi di rotazione

Direction of rotation



Lubrificazione

Lubrication

Tutti i riduttori sono forniti completi di lubrificante sintetico viscosità 320, pertanto possono essere installati in qualunque posizione di montaggio e non necessitano di manutenzione.

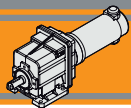
Permanent synthetic oil long-life lubrication (viscosity grade 320) makes it possible to use in all mounting positions; for this reason they can be installed in any assembly position and do not require maintenance.

ECMG

Simbologia

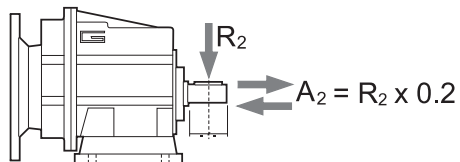
Symbols

n_1	[min ⁻¹]	Velocità in ingresso / <i>Input speed</i>
n_2	[min ⁻¹]	Velocità in uscita / <i>Output speed</i>
i		Rapporto di riduzione / <i>Ratio</i>
P_1	[kW]	Potenza in entrata / <i>Input power</i>
M_2	[Nm]	Coppia nominale in uscita in funzione di P_1 / <i>Output torque referred to P_1</i>
sf		Fattore di servizio / <i>Service factor</i>
R_2	[N]	Carico radiale ammissibile in uscita / <i>Permitted output radial load</i>
A_2	[N]	Carico assiale ammissibile in uscita / <i>Permitted output axial load</i>



Carichi radiali

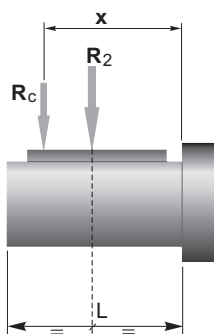
Radial loads



n_2 [min ⁻¹]	R_2 [N]				
	CMG 00	CMG 01	CMG 02	CMG 03	CMG 04
700	416	764	1529	1987	2379
600	437	805	1609	2092	2504
500	465	855	1710	2223	2661
400	501	921	1842	2395	2866
250	586	1077	2154	2801	3353
180	653	1323	2554	3321	3897
150	748	1406	2714	3529	4244
120	806	1631	3467	3801	4572
100	958	1842	3684	4507	5234
80	1032	1984	3969	5042	5991
60	1136	2184	4368	5549	6594
40	1300	2500	5000	6500	8000
10	1300	2500	5000	6500	8000

Quando il carico radiale risultante non è applicato sulla mezza-
ria dell'albero occorre calcolare quello effettivo con la seguente
formula:

When the resulting radial load is not applied on the centre line
of the shaft it is necessary to calculate the effective load with the
following formula:



	CMG 00	CMG 01	CMG 02	CMG 03	CMG 04
a	73	104	117	132	150
b	53	84	92	102	115
R_{2MAX}	1300	2500	5000	6500	8000

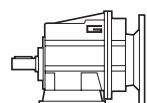
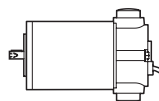
$$R_c = \frac{R_2 \cdot a}{(b+x)} \leq R_{2MAX}$$

a, b = valori riportati nella tabella
a, b = values given in the table

$$R \leq R_c$$

Motori applicabili

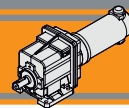
IEC Motor adapters



		EC						
		070.12E 070.24E	100.120 100.240 100.24E	180.120 180.240	180.24E	250.120 250.240	350.120 350.240	600.120 600.240
CMG	002	5.03 - 55.10						
	012	3.82 - 60.15						
	013	63.22 - 443.59						
	022	3.66 - 60.90						
	023	64.01 - 449.14						
	032						3.74 - 60.80	
	033	72.83 - 427.03						
	042						3.74 - 60.80	
	043	72.83 - 427.03						

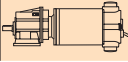
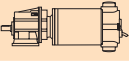
5.03 - 55.10

Rapporti di riduzione i
Ratio i



Dati tecnici per servizio S2

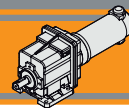
Technical data for S2 duty

P ₁ [W]	n ₂ [min ⁻¹]	M ₂ [Nm]	sf	i		Versione motore Motor version	P ₁ [W]	n ₂ [min ⁻¹]	M ₂ [Nm]	sf	i		Versione motore Motor version					
100							140											
(3000 min ⁻¹)	596	1.5	20.2	5.03	070/002	12E/24E	(3000 min ⁻¹)	596	2.2	14.4	5.03	100/002	120/240/24E					
	492	1.9	16.6	6.10					492	2.6	11.9			6.10				
	401	2.3	13.5	7.49					401	3.2	9.7			7.49				
	334	2.7	14.2	8.99					334	3.8	10.1			8.99				
	295	3.1	12.6	10.16					295	4.3	9.0			10.16				
	249	3.7	10.6	12.07					249	5.2	7.6			12.07				
	224	4.1	13.4	13.40					224	5.7	9.6			13.40				
	198	4.6	11.9	15.14					198	6.5	8.5			15.14				
	165	5.5	9.9	18.17					165	7.8	7.1			18.17				
	139	6.6	8.3	21.58					139	9.2	6.0			21.58				
	128	7.2	7.7	23.51					128	10	5.5			23.51				
	120	7.7	7.2	25.10					120	11	5.1			25.10				
	111	8.3	6.6	27.08					111	12	4.7			27.08				
	92	9.9	5.5	32.49					92	14	4.0			32.49				
	71	13	4.3	42.04					71	18	3.1			42.04				
	67	14	4.0	44.89					67	19	2.9			44.89				
	61	15	3.7	48.86					61	21	2.6			48.86				
	54	17	3.3	55.10					54	24	2.3			55.10				
	61	15	6.3	49.00	070/012	12E/24E		85	15	6.2	35.47	100/012	120/240/24E					
	56	16	5.8	53.33					65	20	4.8			45.89				
	50	18	5.1	60.15					61	21	4.5			49.00				
	47	19	5.0	63.22	070/013	12E/24E		56	23	4.1	53.33							
	40	22	4.2	75.08					50	26	3.7	60.15						
	34	27	3.5	89.17					47	26	3.5	63.22	100/013	120/240/24E				
	27	34	2.8	113.05					40	31	3.0	75.08						
	22	40	2.3	134.27					34	37	2.5	89.17						
	17	52	1.8	173.72					27	47	2.0	113.05						
	15	60	1.6	202.16					22	56	1.7	134.27						
	11	78	1.2	261.57					17	73	1.3	173.72						
	10	91	1.0	304.00					15	85	1.1	202.16						
	7.6	118	0.8	393.33					11	110	0.9	261.57						
	6.8	133	0.7	443.59			10	127	0.7	304.00								
	22	41	3.8	135.95	070/023	12E/24E		7.6	134	0.7	393.33							
	17	53	3.0	175.89					6.8	134	0.7	443.59						
	15	61	2.5	204.69					33	38	4.1	90.29	100/023	120/240/24E				
	11	79	2.0	264.84					26	48	3.3	114.46						
	10	92	1.7	307.80					22	57	2.7	135.95						
	7.5	119	1.3	398.25					17	74	2.1	175.89						
	6.7	134	1.2	449.14					15	86	1.8	204.69						
	13	67	3.5	225.47			070/033	12E/24E		11	111	1.4			264.84			
	11	78	3.0	262.05							10	129			1.2	307.80		
	9.2	97	2.4	325.79							7.5	167			0.9	398.25		
	7.9	113	2.1	378.64					6.7	188	0.8	449.14						
	7.0	128	1.8	427.03					17	73	3.2	174.26			100/033	120/240/24E		
	9.2	97	4.0	325.79	070/043	12E/24E				13	94	2.5	225.47					
	7.9	113	3.4	378.64							11	110	2.1	262.05				
	7.0	128	3.1	427.03					9.2	136	1.7	325.79						
									7.9	159	1.5	378.64						
									7.0	179	1.3	427.03						
									11	110	3.6	262.05	100/043	120/240/24E				
									9.2	136	2.9	325.79						
							7.9	159	2.5	378.64								
							7.0	179	2.2	427.03								

NOTA
Verificare sempre che la coppia M2 utilizzata non ecceda il valore indicato nelle caselle in grigio
NOTE
Please check that the output torque M2 does not exceed the value in the grey areas

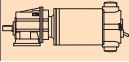
NOTA: per servizio continuo o altamente intermittente, contattare il servizio tecnico

NOTE: for continuous or highly intermittent duty, please contact our technical service

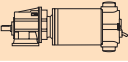


Dati tecnici per servizio S2

Technical data for S2 duty

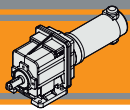
P ₁ [W]	n ₂ [min ⁻¹]	M ₂ [Nm]	sf	i		Versione motore Motor version		
350								
(3000 min ⁻¹)	84	38	4.1	35.91	250/022	120/240		
	65	50	3.1	46.46				
	60	53	2.9	49.61				
	56	58	2.7	54.00				
	49	65	2.4	60.90				
	47	67	2.3	64.01	250/023	120/240		
	39	80	2.0	76.02				
	33	95	1.6	90.29				
	26	120	1.3	114.46				
	22	142	1.1	135.95				
	17	184	0.8	175.89				
	15	214	0.7	204.69				
	11	223	0.7	264.84				
	41	76	3.1	72.83			250/033	120/240
	31	102	2.3	97.45				
	26	121	1.9	115.74				
	21	147	1.6	140.81				
	17	183	1.3	174.26				
	13	236	1.0	225.47				
	11	274	0.9	262.05				
	9.2	341	0.7	325.79				
	7.9	334	0.7	378.64				
	7.0	334	0.7	427.03				
	41	76	5.1	72.83	250/043	120/240		
	31	102	3.8	97.45				
	26	121	3.2	115.74				
	21	147	2.6	140.81				
	17	183	2.1	174.26				
	13	236	1.7	225.47				
	11	274	1.4	262.05				
	9.2	341	1.1	325.79				
	7.9	397	1.0	378.64				
	7.0	447	0.9	427.03				

500						
(3000 min ⁻¹)	596	7.7	4.0	5.03	350/002	120/240
	492	9.3	3.3	6.10		
	401	11	2.7	7.49		
	334	14	2.8	8.99		
	295	16	2.5	10.16		
	249	18	2.1	12.07		
	224	20	2.7	13.40		
	198	23	2.4	15.14		
	165	28	2.0	18.17		
	139	33	1.7	21.58		
	128	36	1.5	23.51		
	120	38	1.4	25.1		
	111	41	1.3	27.08		
	92	50	1.1	32.49		
	71	64	0.9	42.04		
	67	69	0.8	44.89		
	61	75	0.7	48.86		

P ₁ [W]	n ₂ [min ⁻¹]	M ₂ [Nm]	sf	i		Versione motore Motor version
500						
(3000 min ⁻¹)	785	5.8	8.1	3.82	350/012	120/240
	648	7.1	6.6	4.63		
	527	8.7	5.4	5.69		
	389	12	5.3	7.72		
	327	14	4.4	9.17		
	306	15	4.1	9.81		
	261	18	4.4	11.5		
	252	18	4.3	11.9		
	217	21	4.5	13.80		
	205	22	4.2	14.62		
	168	27	3.4	17.86		
	157	29	3.2	19.07		
	151	30	3.1	19.83		
	127	36	2.6	23.56		
	101	45	2.1	29.56		
	85	54	1.7	35.47		
	65	70	1.3	45.89		
	61	75	1.3	49.00		
	56	81	1.2	53.33		
	50	92	1.0	60.15		
	47	95	1.0	63.22	350/013	120/240
	40	112	0.8	75.08		
	34	133	0.7	89.17		
	27	134	0.7	113.05		
	22	134	0.7	134.27		
	126	36	4.3	23.85	350/022	120/240
	100	46	3.4	29.93		
	84	55	2.8	35.91		
	65	71	2.2	46.46		
	60	76	2.1	49.61		
	56	83	1.9	54.00		
	49	93	1.7	60.90		
	47	96	1.6	64.01		
	39	114	1.4	76.02		
	33	135	1.2	90.29		
	26	171	0.9	114.46		
	22	203	0.8	135.95		
	17	223	0.7	175.89		
	98	47	5.0	30.57	350/032	120/240
	88	52	4.5	34.20		
	78	59	4.0	38.63		
	68	68	3.5	44.18		
	58	78	3.0	51.30		
	49	93	2.5	60.80		
	41	109	2.1	72.83		
	31	146	1.6	97.45		
	26	173	1.4	115.74		
	21	211	1.1	140.81		
	17	261	0.9	174.26		
	13	334	0.7	225.47		
	11	334	0.7	262.05		
	58	78	5.0	51.30	350/042	120/240
	49	93	4.0	60.80		

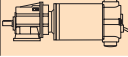
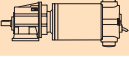
NOTA
Verificare sempre che la coppia M2 utilizzata non ecceda il valore indicato nelle caselle in grigio
NOTE
Please check that the output torque M2 does not exceed the value in the grey areas

NOTA: per servizio continuo o altamente intermittente, contattare il servizio tecnico
NOTE: for continuous or highly intermittent duty, please contact our technical service



Dati tecnici per servizio S2

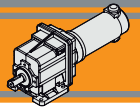
Technical data for S2 duty

P_1 [W]	n_2 [min ⁻¹]	M_2 [Nm]	sf	i		Versione motore Motor version	P_1 [W]	n_2 [min ⁻¹]	M_2 [Nm]	sf	i		Versione motore Motor version				
500							800										
(3000 min ⁻¹)	41	109	3.6	72.83	350/043	120/240	(3000 min ⁻¹)	302	24	3.9	9.93	600/022	120/240				
	31	146	2.7	97.45													
	26	173	2.3	115.74													
	21	211	1.9	140.81													
	17	261	1.5	174.26													
	13	337	1.2	225.47													
	11	392	1.0	262.05													
	9.2	487	0.8	325.79													
	7.9	557	0.7	378.64													
	7.0	557	0.7	427.03													
800							800										
(3000 min ⁻¹)	596	12	2.5	5.03	600/002	120/240	(3000 min ⁻¹)	302	24	3.9	9.93	600/022	120/240				
	492	15	2.1	6.10													
	401	18	1.7	7.49													
	334	22	1.8	8.99													
	295	25	1.6	10.16													
	249	30	1.3	12.07													
	224	33	1.7	13.40													
	198	37	1.5	15.14													
	165	44	1.2	18.17													
	139	53	1.0	21.58													
	128	57	1.0	23.51													
	120	61	0.9	25.10													
	111	66	0.8	27.08													
	92	79	0.7	32.49													
	71	79	0.7	42.04													
	67	79	0.7	44.89													
	785	9	5.0	3.82			600/012	120/240		47	153			1.0	64.01	600/023	120/240
	648	11	4.2	4.63													
	527	14	3.4	5.69													
	389	19	3.3	7.72													
	327	22	2.8	9.17													
	306	24	2.6	9.81													
	261	28	2.8	11.5													
	252	29	2.7	11.9													
	217	34	2.8	13.8													
	205	36	2.6	14.62													
	168	44	2.2	17.86													
	157	47	2.0	19.07													
	151	48	1.9	19.83													
	127	58	1.6	23.56													
	101	72	1.3	29.56													
	85	87	1.1	35.47													
	65	112	0.8	45.89													
	61	120	0.8	49.00													
	56	130	0.7	53.33													
	47	134	0.7	63.22	600/013	120/240		39	182	0.9	76.02	600/023	120/240				
	40	134	0.7	75.08													
								33	216	0.7	90.29						
								26	223	0.7	114.46						
								22	223	0.7	135.95						
								120	61	3.8	24.99	600/032	120/240				
								98	75	3.1	30.57						
								88	84	2.8	34.20						
								78	94	2.5	38.63						
								68	108	2.2	44.18						
								58	125	1.9	51.30						
								49	149	1.6	60.80						
								41	174	1.3	72.83			600/033	120/240		
								31	233	1.0	97.45						
								26	277	0.8	115.74						
								21	334	0.7	140.81						
								17	334	0.7	174.26						
								78	94	4.1	38.63	600/042	120/240				
								68	108	3.6	44.18						
								58	125	3.1	51.30						
								49	149	2.5	60.80						
								41	174	2.2	72.83					600/043	120/240
								31	233	1.7	97.45						
								26	277	1.4	115.74						
								21	337	1.2	140.81						
								17	417	0.9	174.26						
								13	540	0.7	225.47						
								11	557	0.7	262.05						
								9	557	0.7	325.79						

NOTA
Verificare sempre che la coppia M_2 utilizzata non ecceda il valore indicato nelle caselle in grigio
NOTE
Please check that the output torque M_2 does not exceed the value in the grey areas

NOTA: per servizio continuo o altamente intermittente, contattare il servizio tecnico

NOTE: for continuous or highly intermittent duty, please contact our technical service

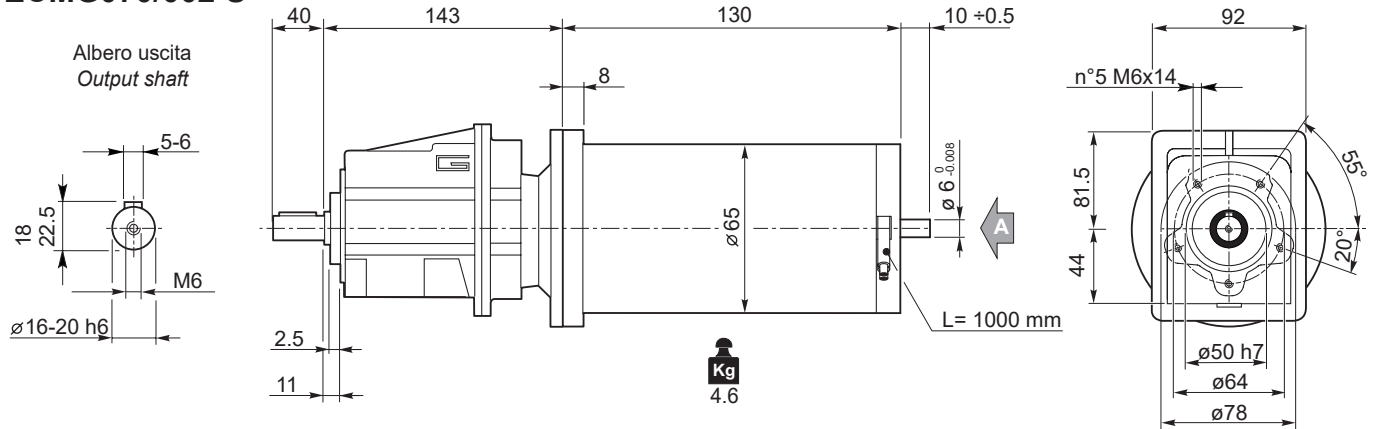


Dimensioni

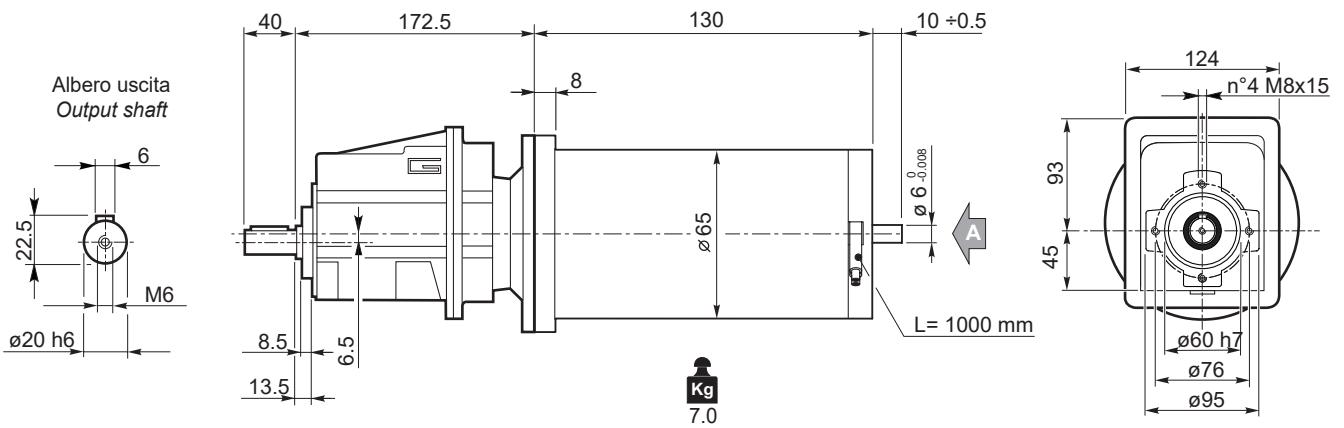
Dimensions

ECMG..U

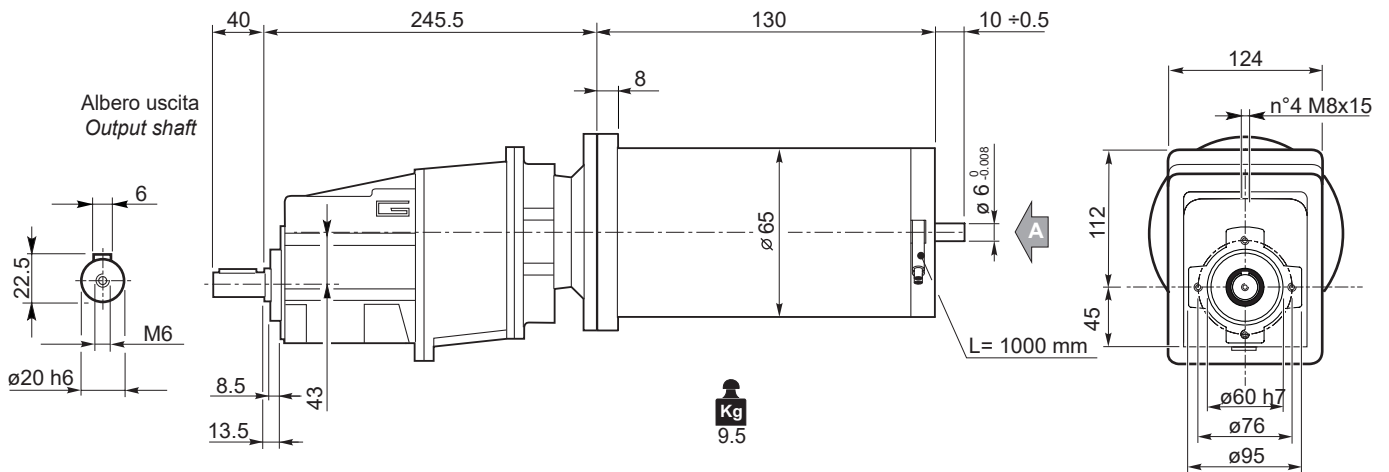
ECMG070/002 U



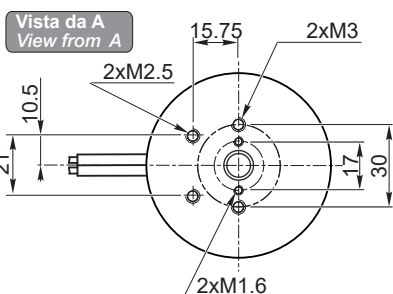
ECMG070/012 U



ECMG070/013 U



ECMG



Freno / Brake



ECMG...H



Encoder



ECMG...F

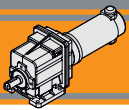


Motori / Motors IP66



ECMG...H/F



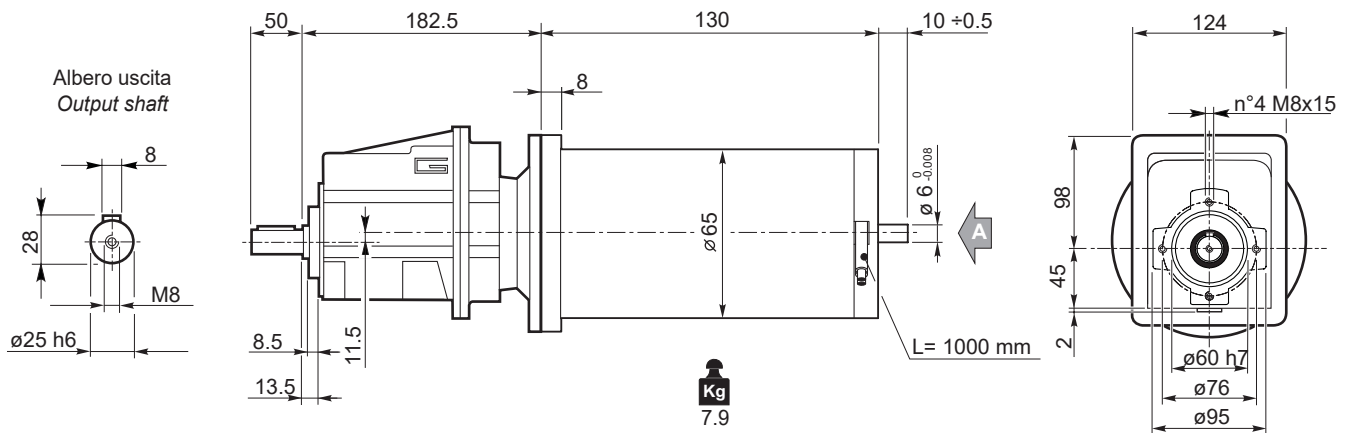


Dimensioni

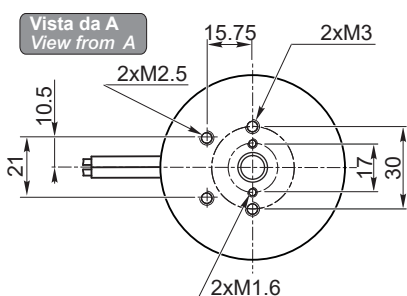
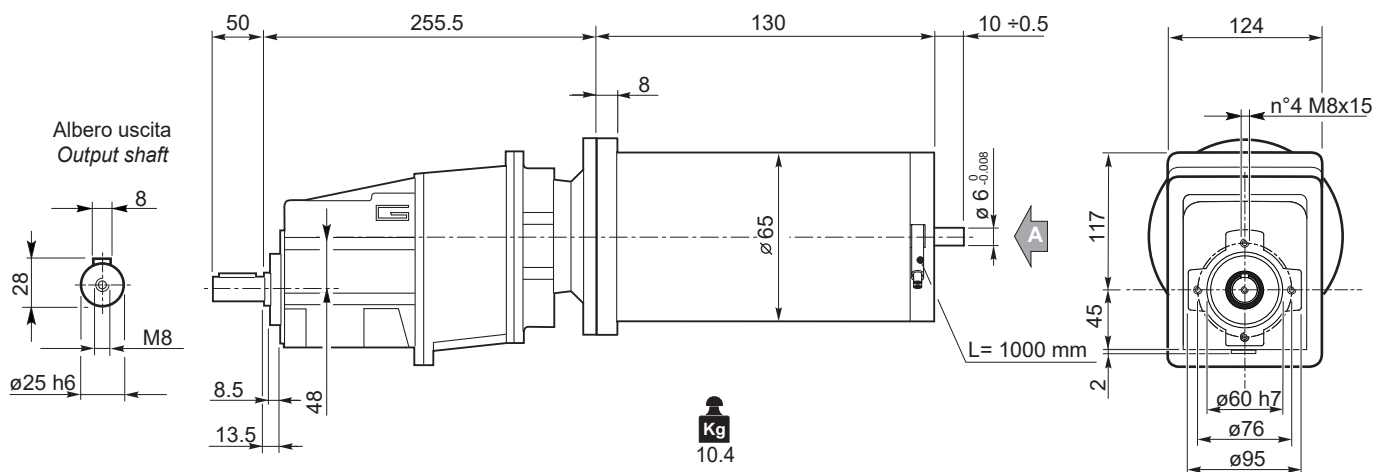
Dimensions

ECMG..U

ECMG070/022 U



ECMG070/023 U



Freno / Brake



H23

ECMG...H



L30

Encoder



H24

ECMG...F



L31

Motori / Motors IP66

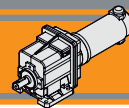


I2

ECMG...H/F



L32

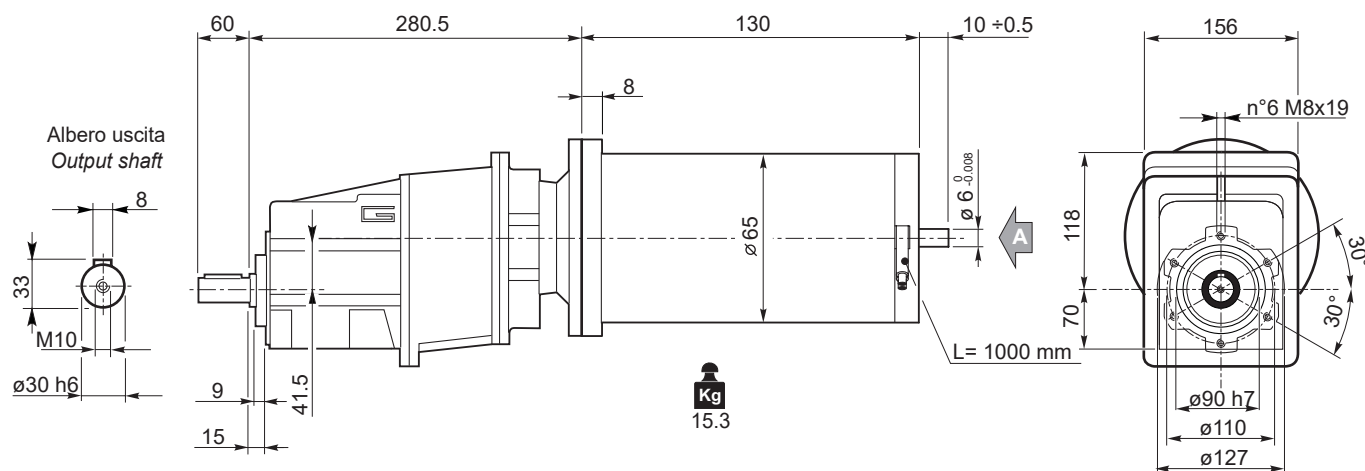


Dimensioni

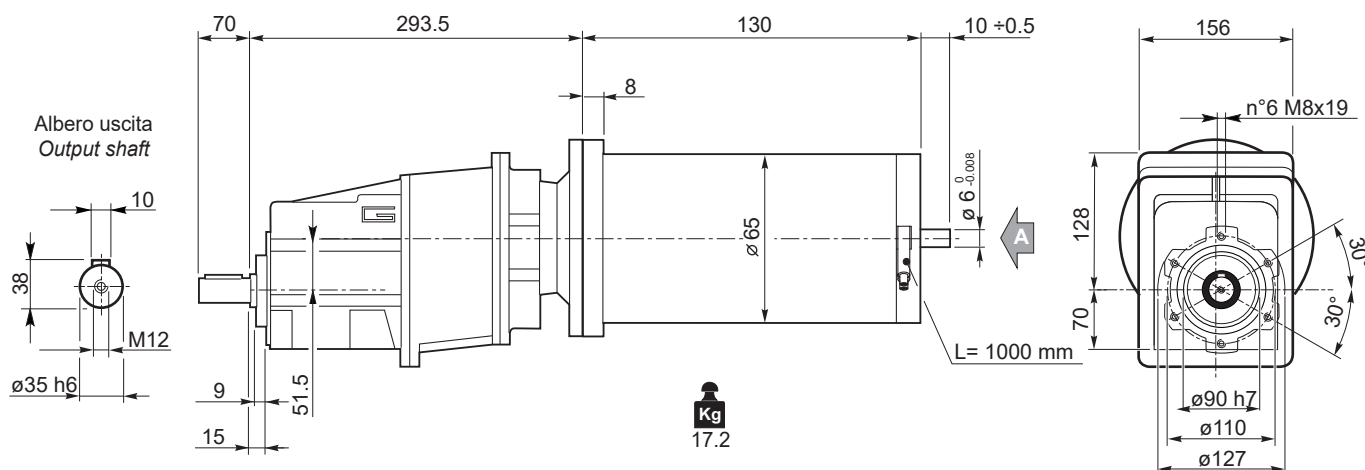
Dimensions

ECMG..U

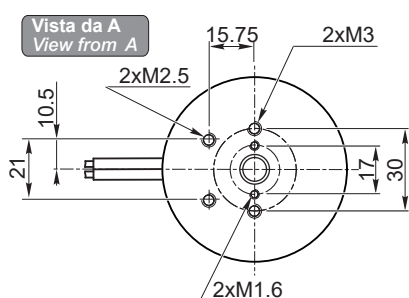
ECMG070/033 U



ECMG070/043 U



ECMG



Freno / Brake



H23

Encoder



H24

Motori / Motors IP66



I2

ECMG...H



L30

ECMG...F

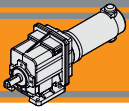


L31

ECMG...H/F



L32

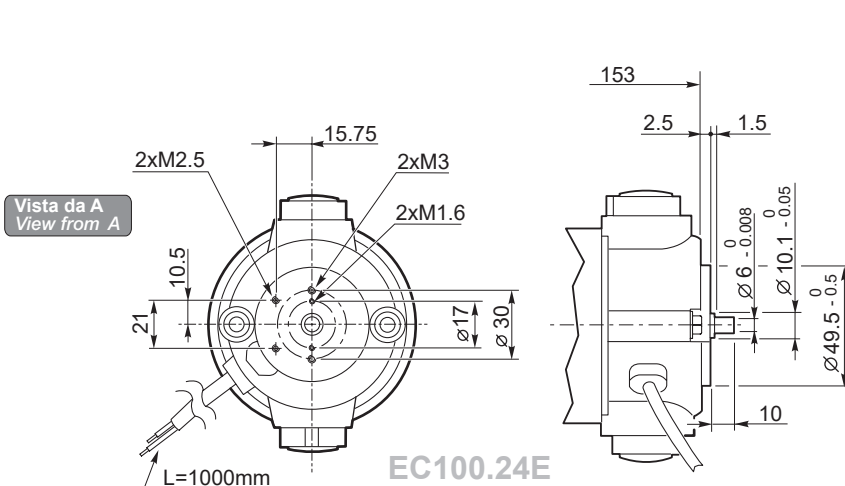
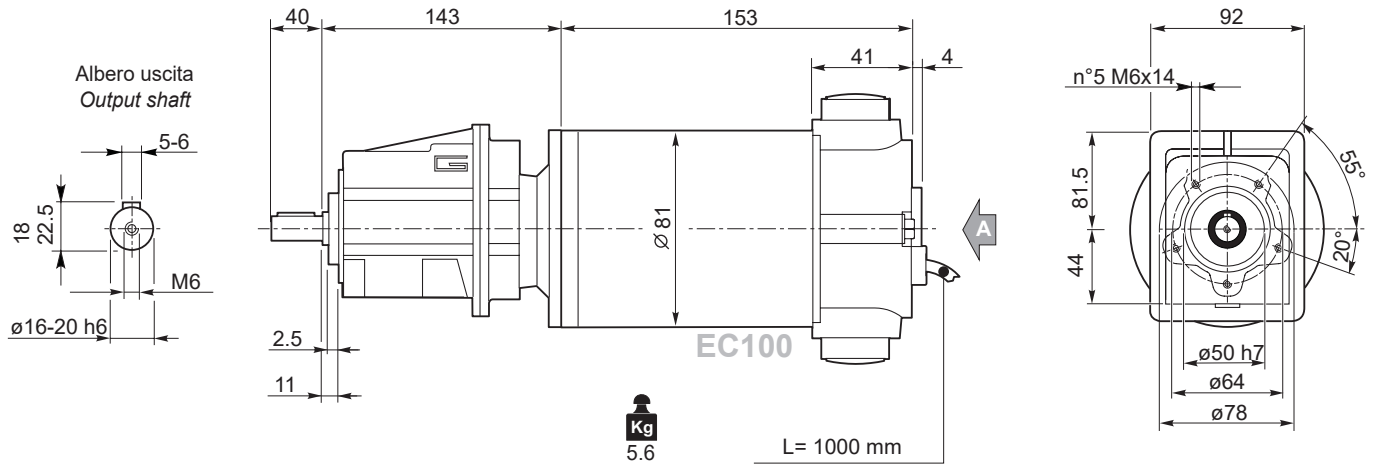


Dimensioni

Dimensions

ECMG..U

ECMG100/002 U



Freno / Brake → H23

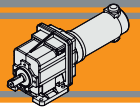
Encoder → H24

Motori / Motors IP66 → I4

ECMG...H → L30

ECMG...F → L31

ECMG...H/F → L32

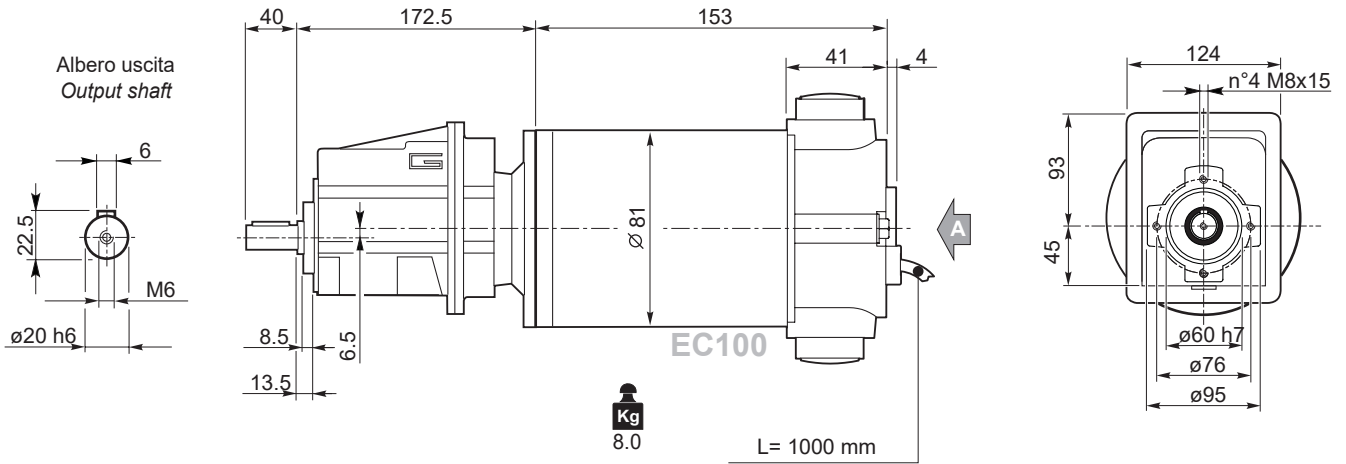


Dimensioni

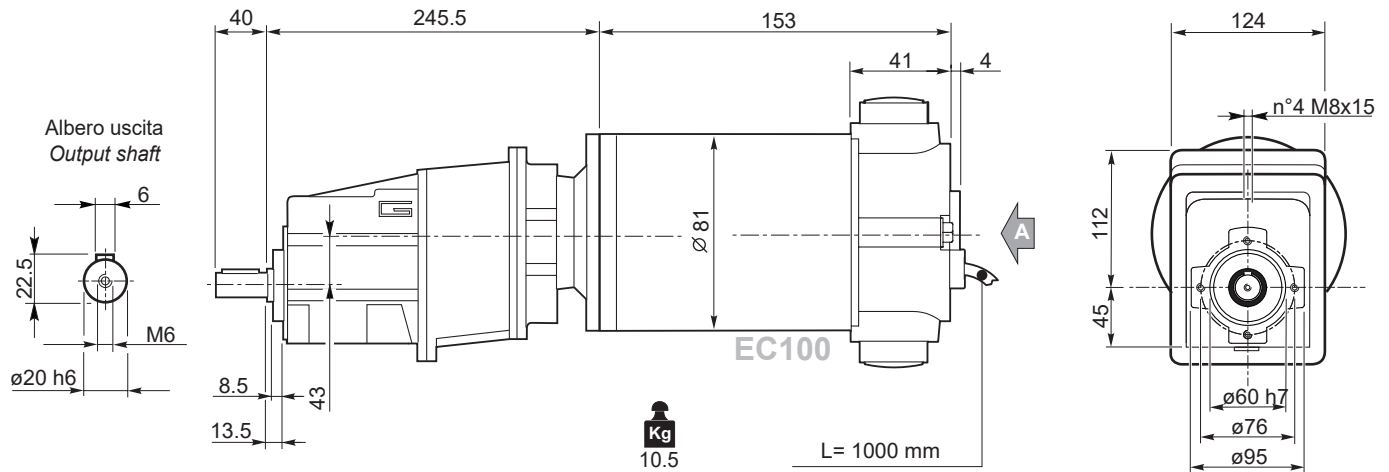
Dimensions

ECMG..U

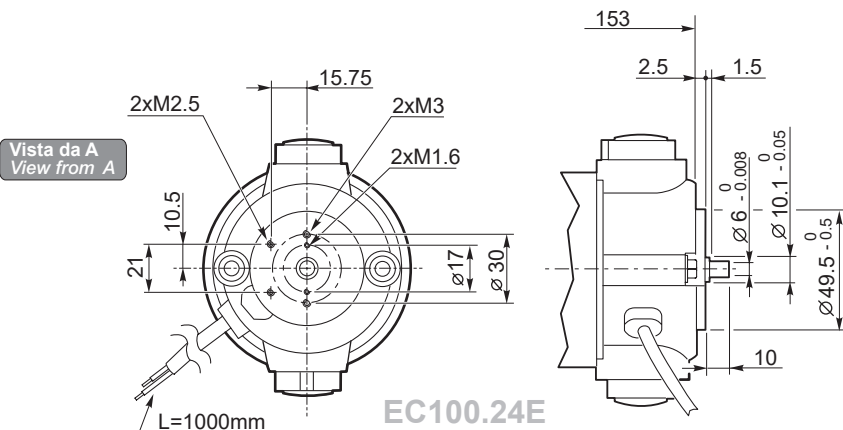
ECMG100/012 U



ECMG100/013 U



ECMG



Freno / Brake → H23

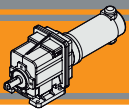
Encoder → H24

Motori / Motors IP66 → I4

ECMG...H → L30

ECMG...F → L31

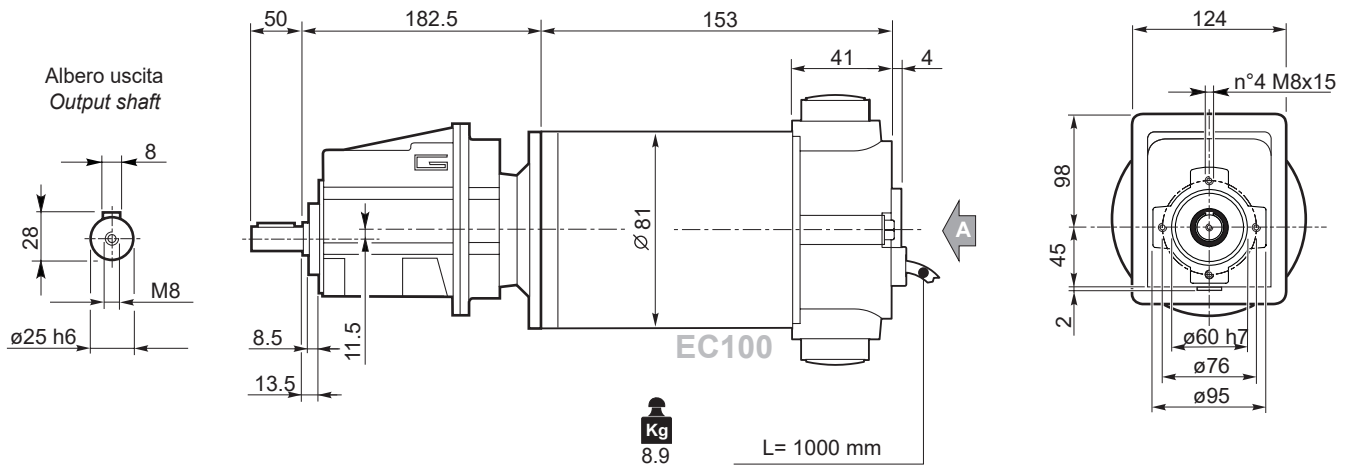
ECMG...H/F → L32



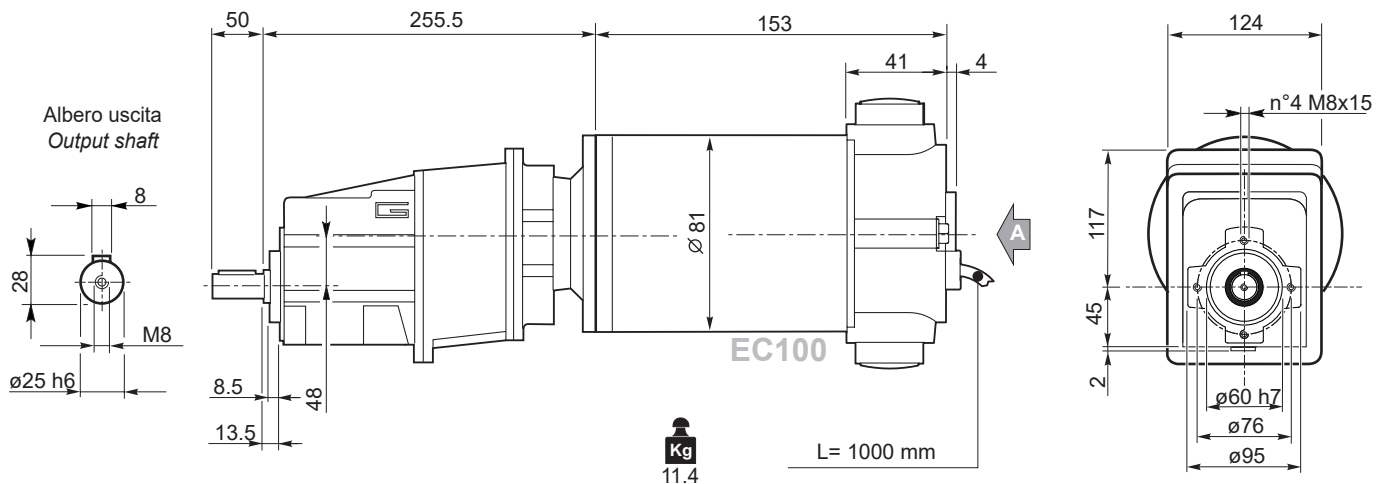
Dimensioni

ECMG..U

ECMG100/022 U



ECMG100/023 U



Freno / Brake → H23

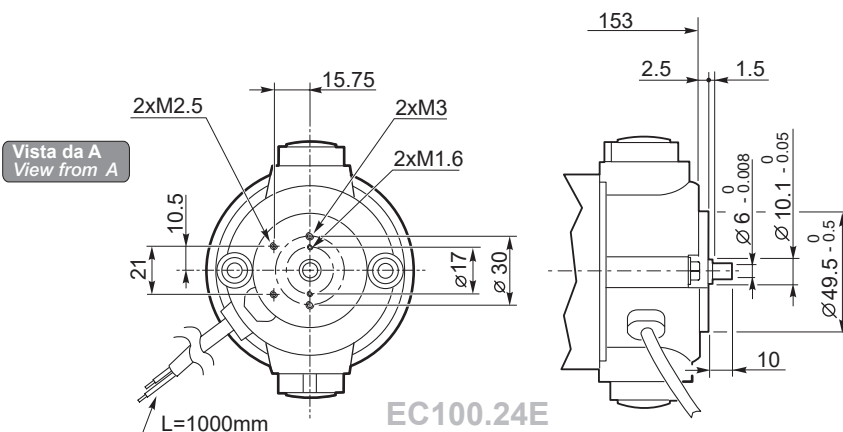
Encoder → H24

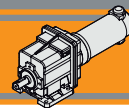
Motori / Motors IP66 → I4

ECMG...H → L30

ECMG...F → L31

ECMG...H/F → L32

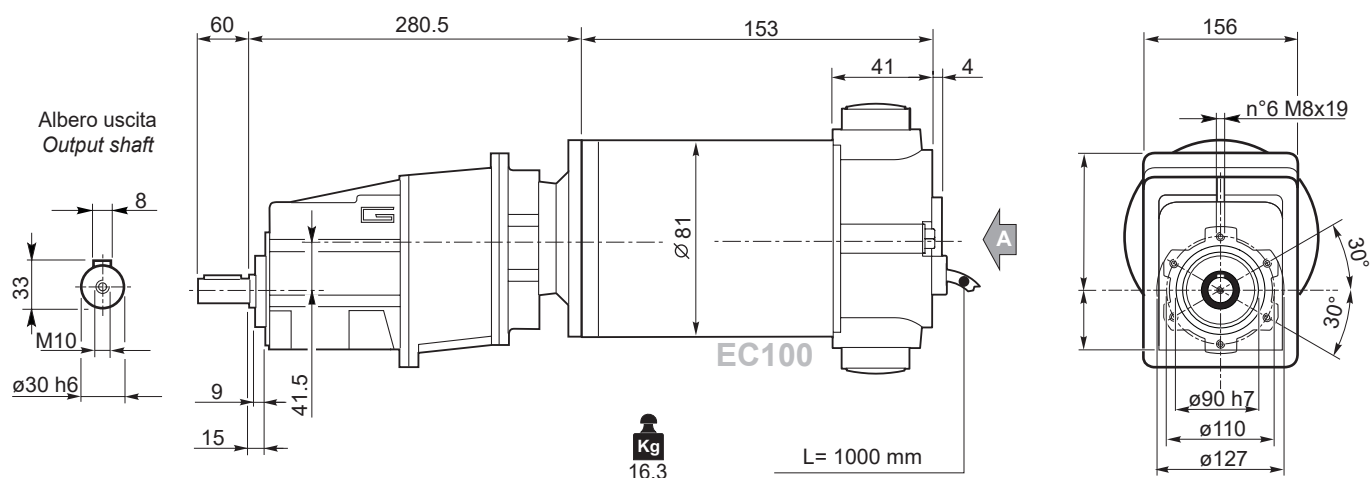




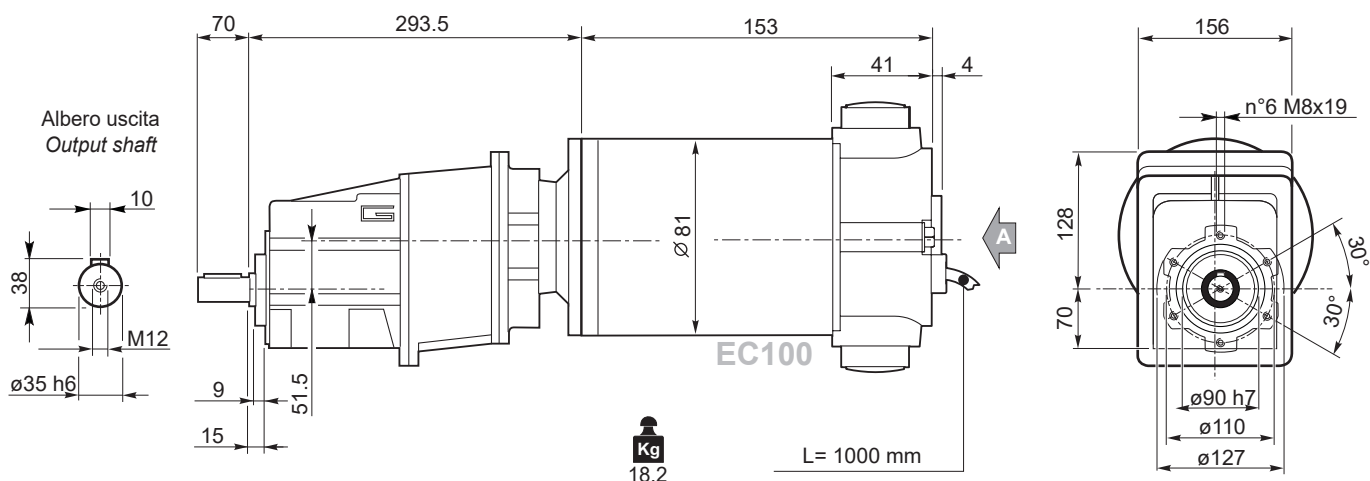
Dimensioni

ECMG..U

ECMG100/033 U



ECMG100/043 U



ECMG

Freno / Brake → H23

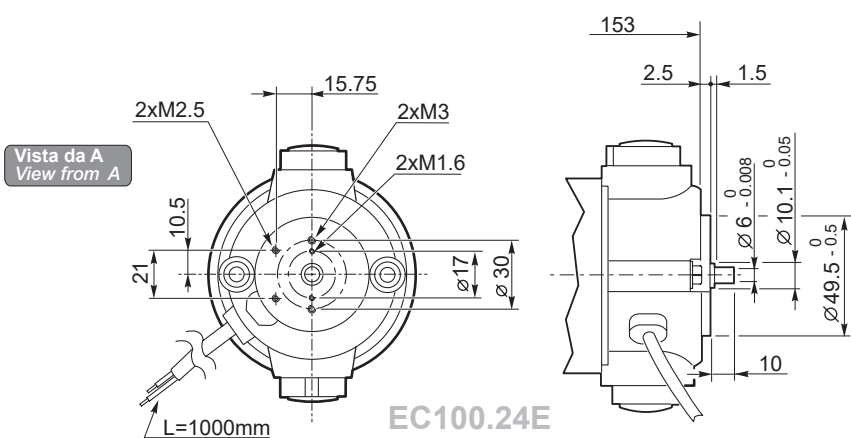
Encoder → H24

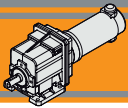
Motori / Motors IP66 → I4

ECMG...H → L30

ECMG...F → L31

ECMG...H/F → L32



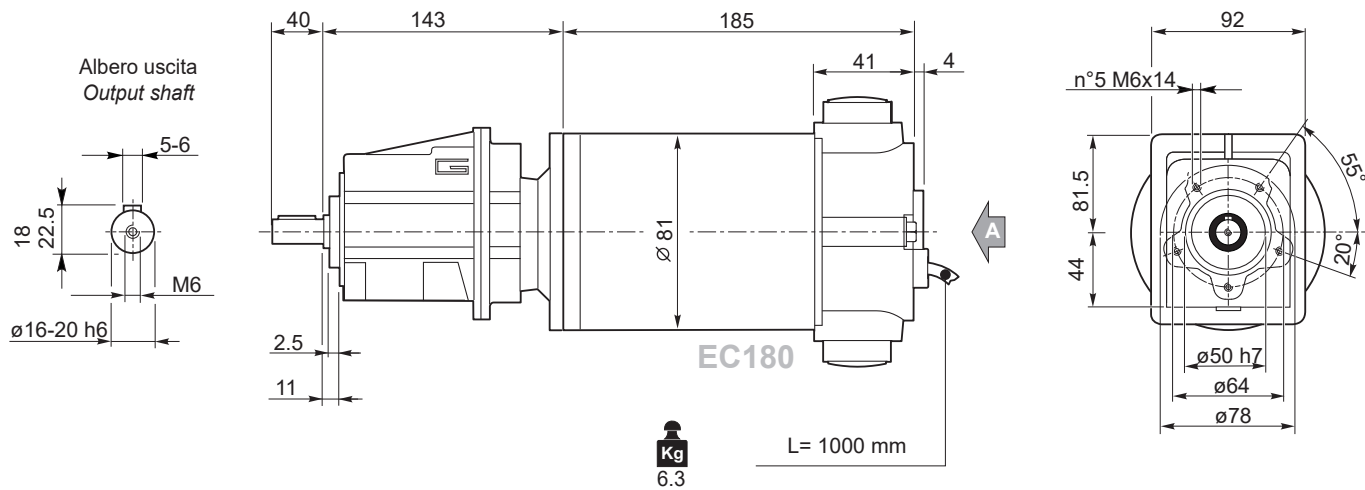


Dimensioni

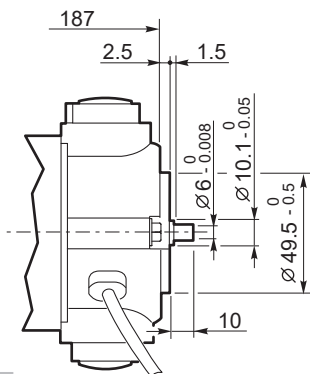
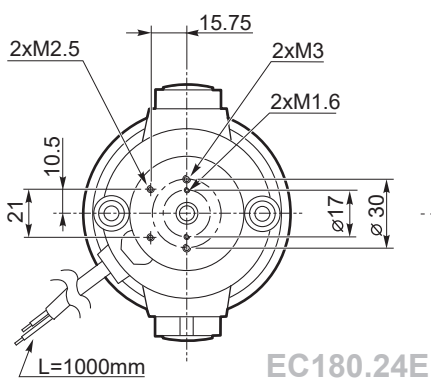
Dimensions

ECMG..U

ECMG180/002 U



Vista da A
View from A



Freno / Brake

H23

Encoder

H24

Motori / Motors IP66

I6

ECMG...H

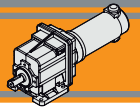
L30

ECMG...F

L31

ECMG...H/F

L32

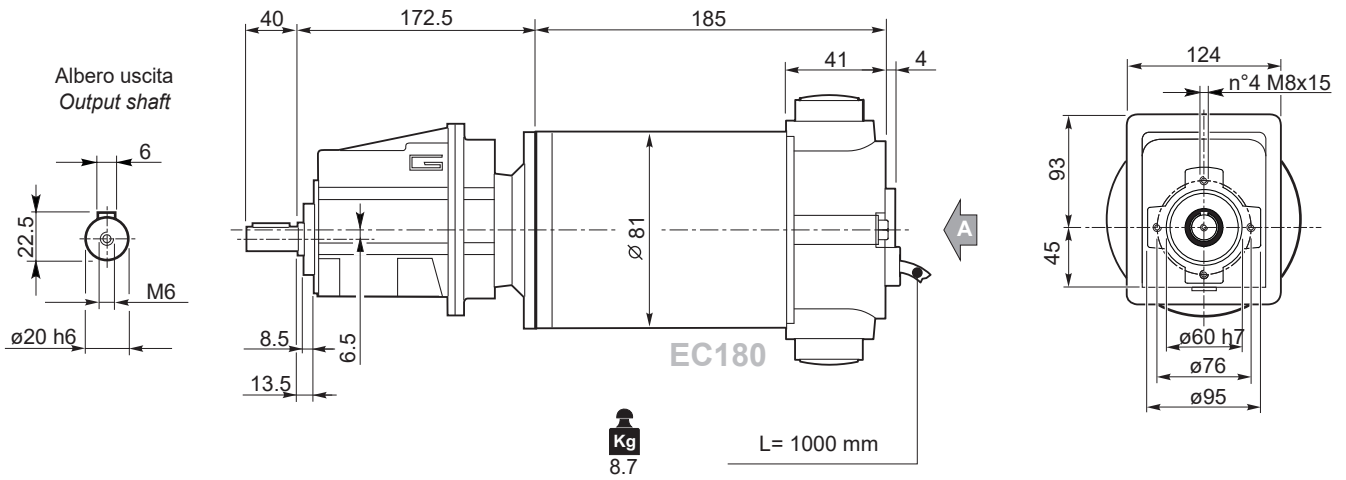


Dimensioni

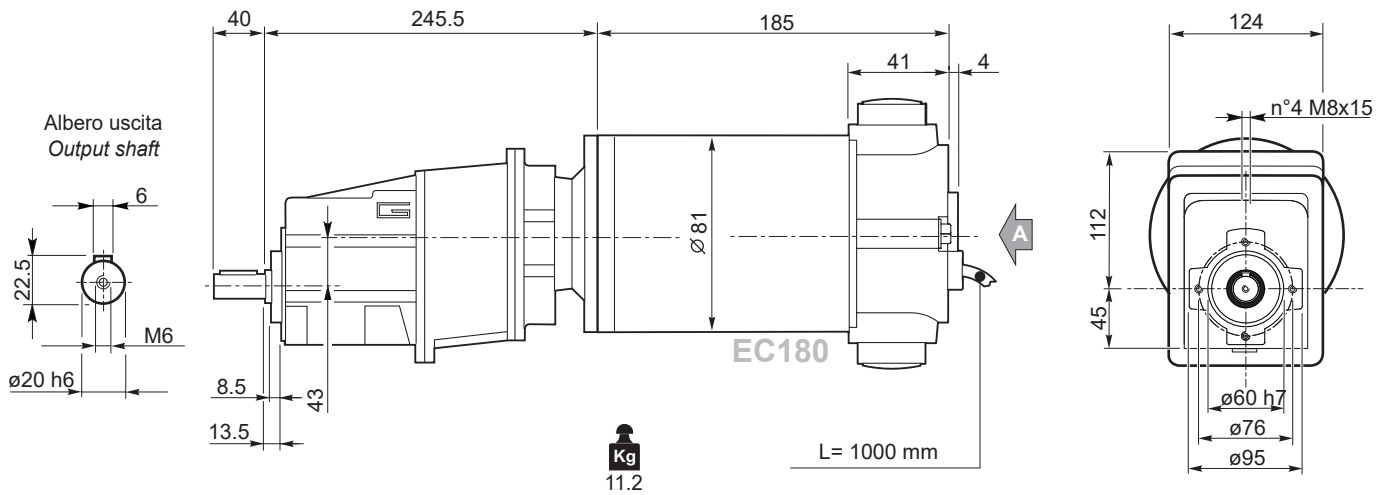
Dimensions

ECMG..U

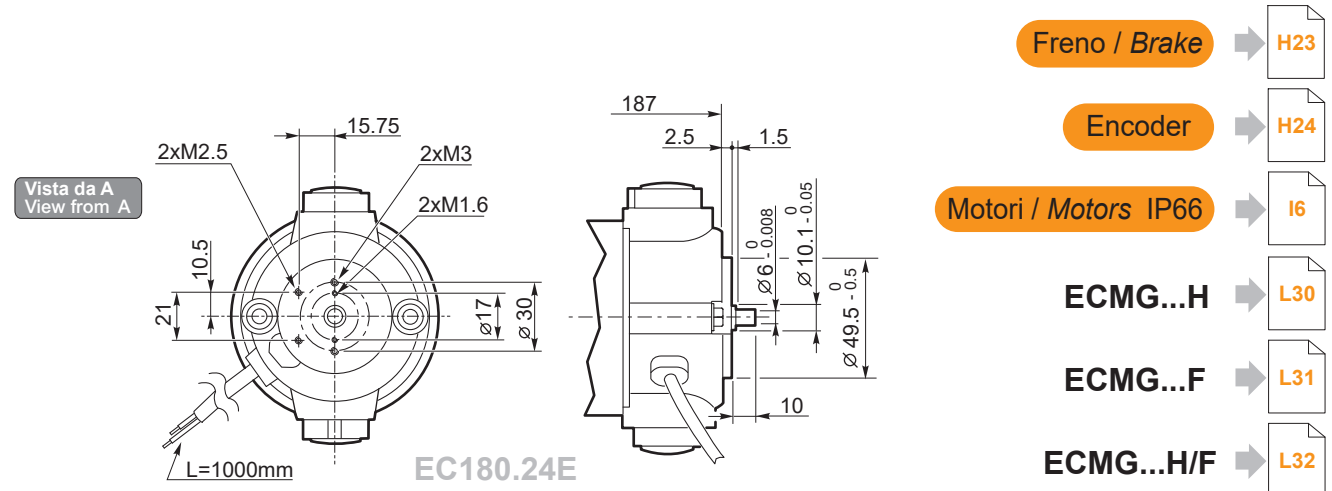
ECMG180/012 U

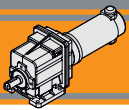


ECMG180/013 U



ECMG



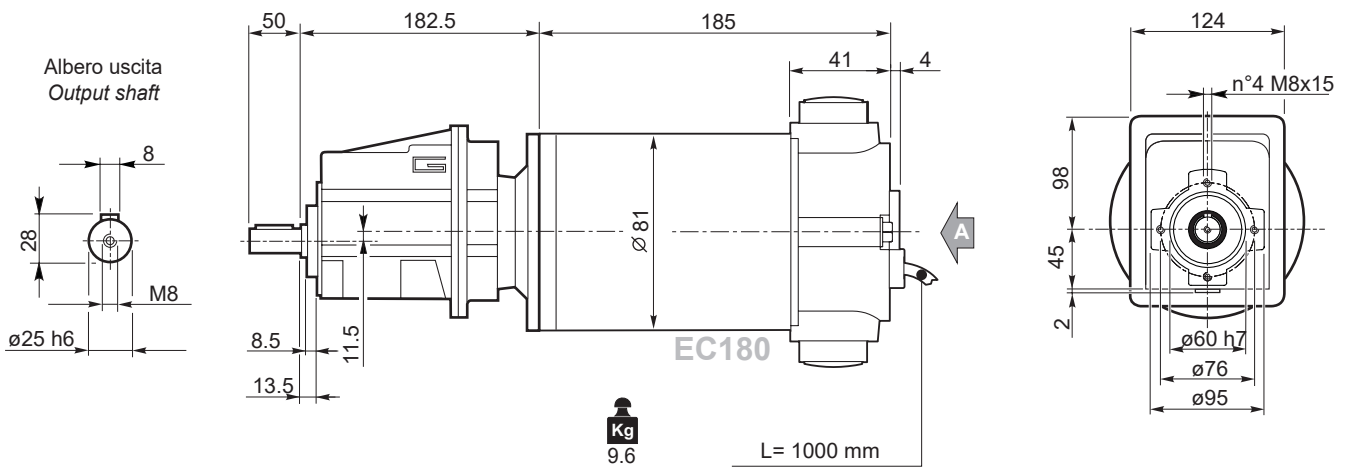


Dimensioni

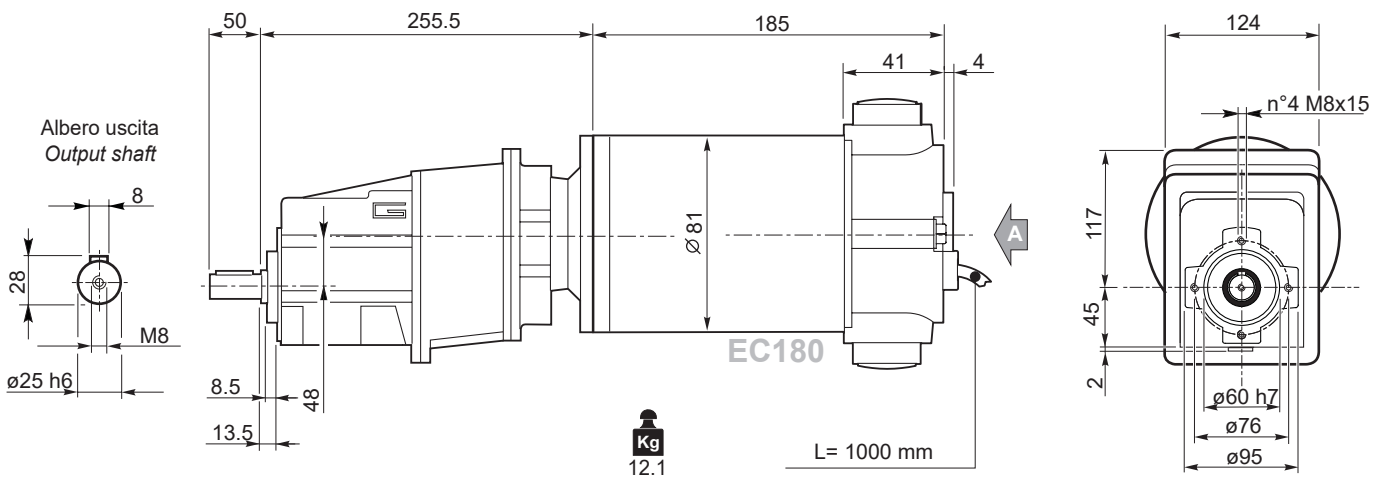
Dimensions

ECMG..U

ECMG180/022 U



ECMG180/023 U



Freno / Brake → [H23](#)

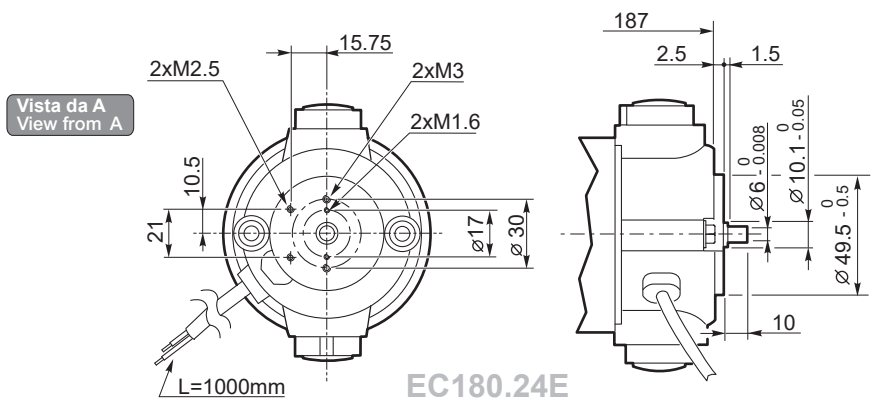
Encoder → [H24](#)

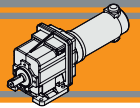
Motori / Motors IP66 → [I6](#)

ECMG...H → [L30](#)

ECMG...F → [L31](#)

ECMG...H/F → [L32](#)



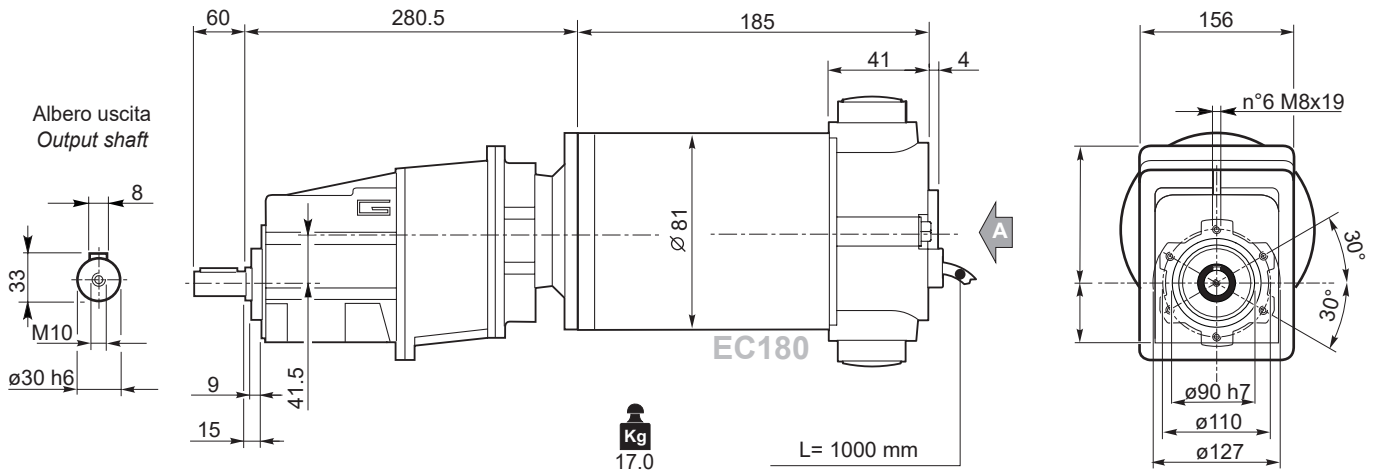


Dimensioni

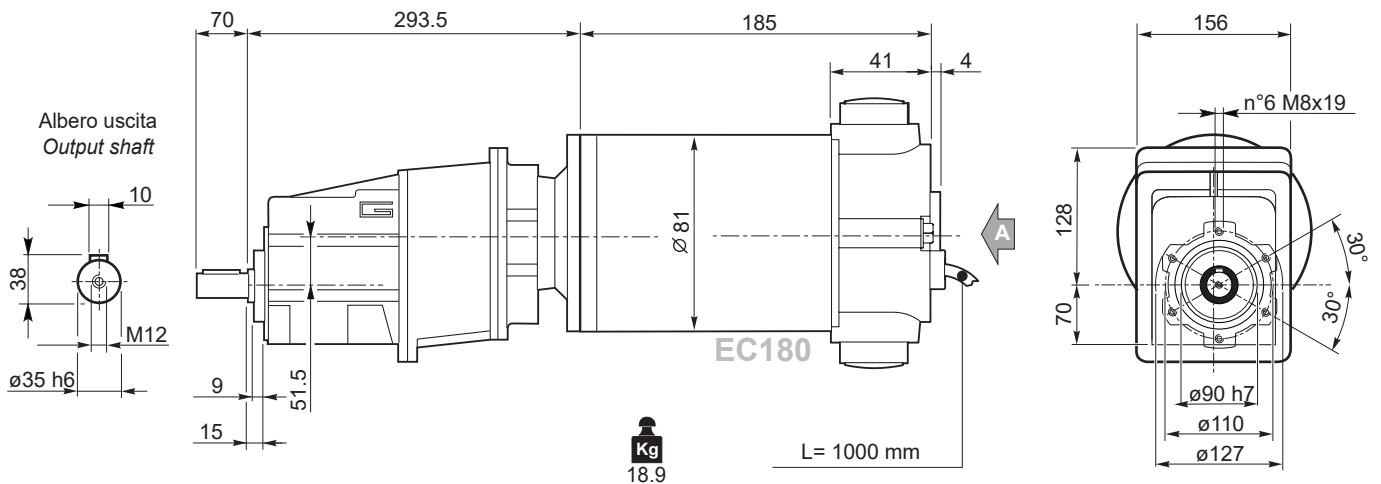
Dimensions

ECMG..U

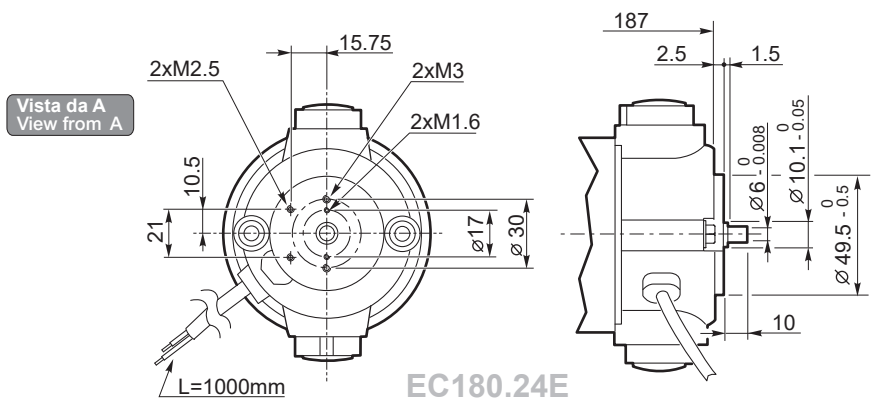
ECMG180/033 U



ECMG180/043 U



ECMG



Freno / Brake → H23

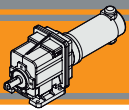
Encoder → H24

Motori / Motors IP66 → I6

ECMG...H → L30

ECMG...F → L31

ECMG...H/F → L32

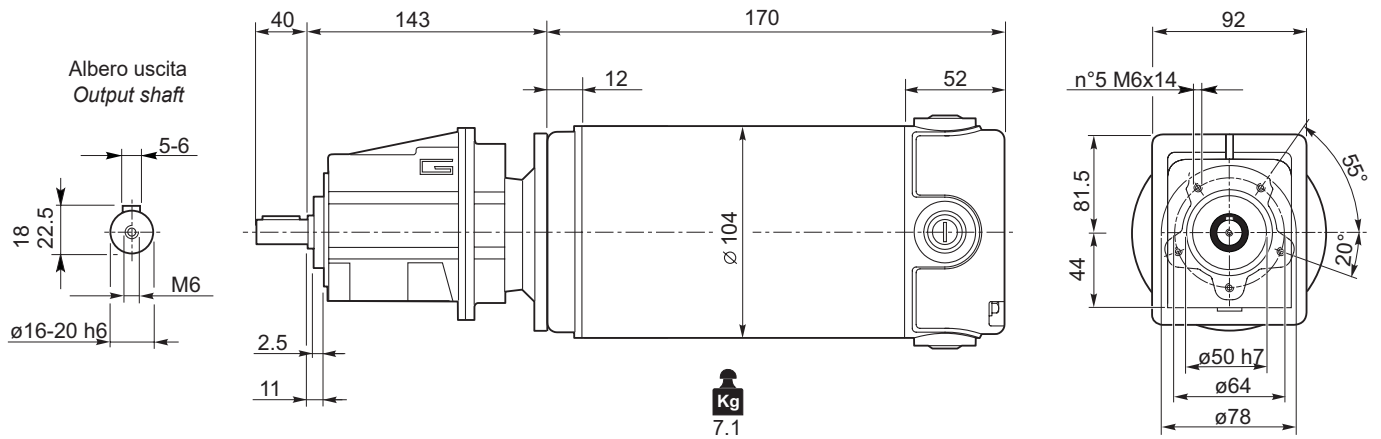


Dimensioni

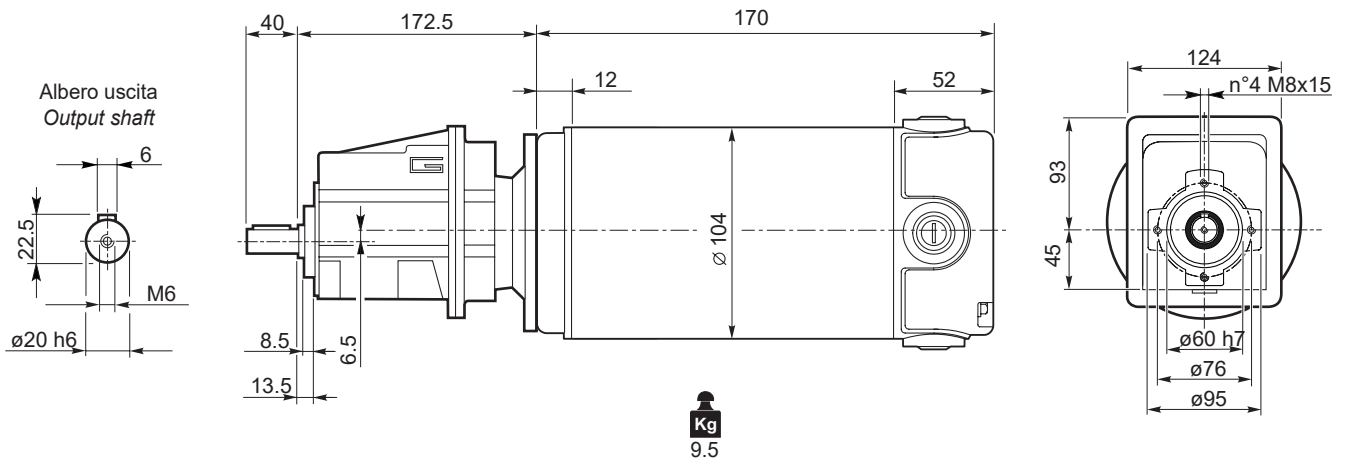
Dimensions

ECMG..U

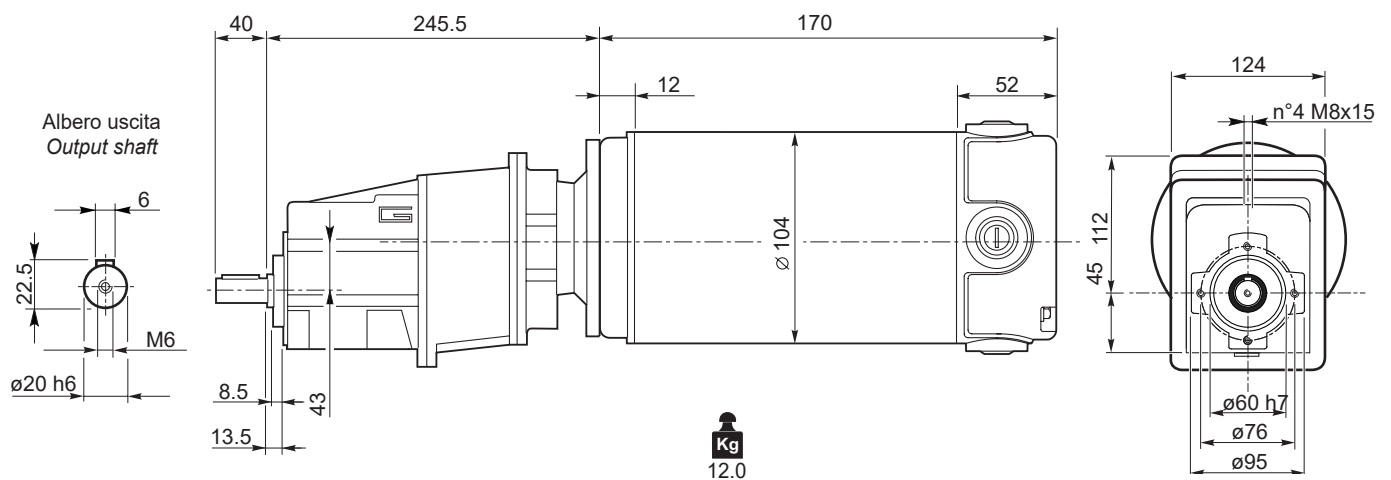
ECMG250/002 U



ECMG250/012 U



ECMG250/013 U



Motori / Motors IP66



ECMG...H

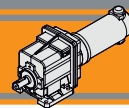


ECMG...F



ECMG...H/F



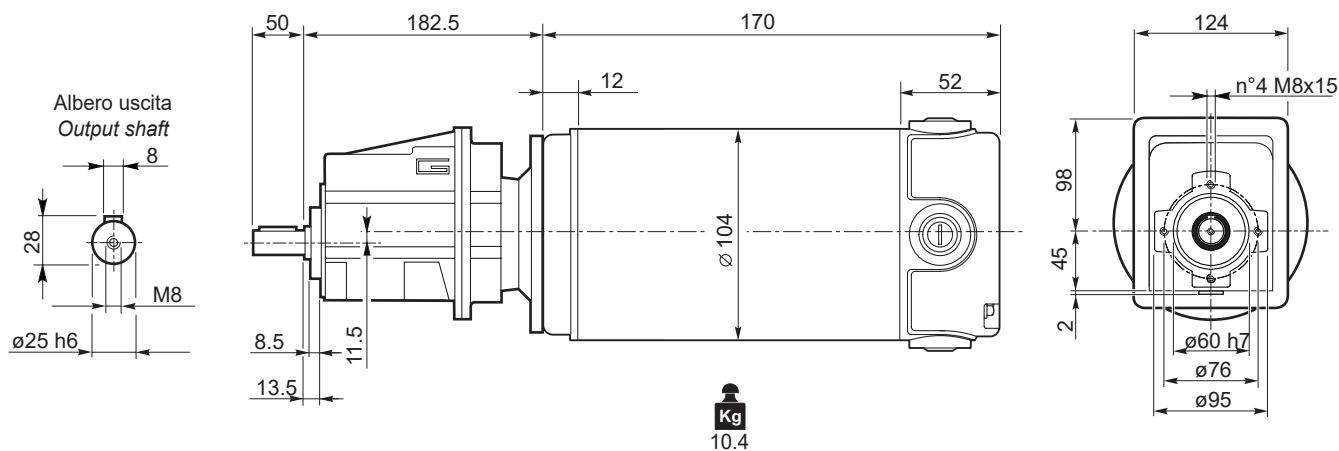


Dimensioni

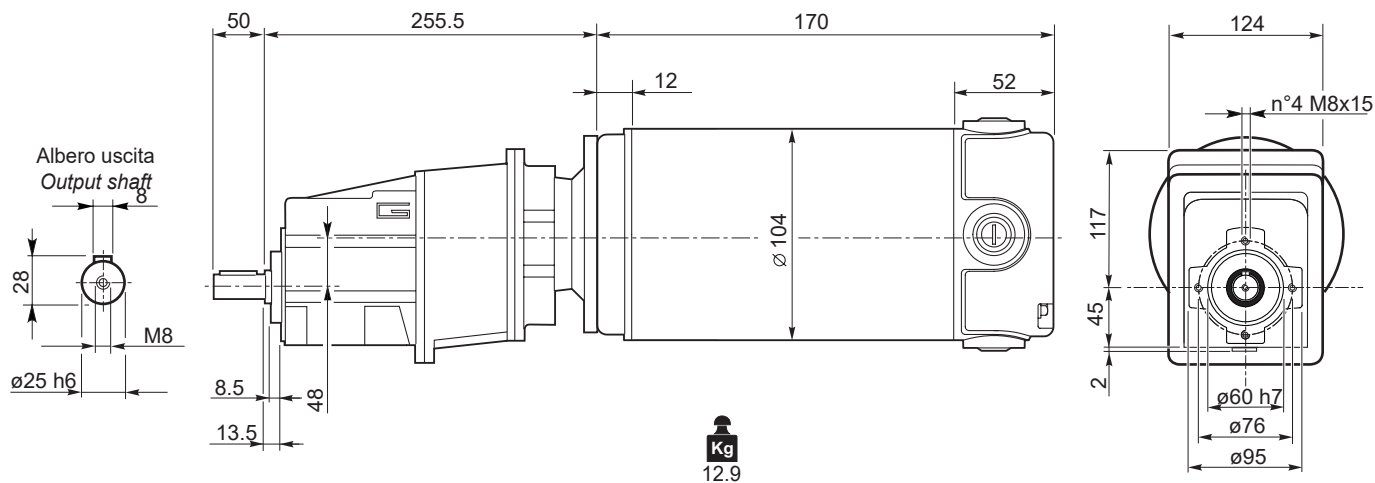
Dimensions

ECMG..U

ECMG250/022 U



ECMG250/023 U



ECMG

Motori / Motors IP66



ECMG...H

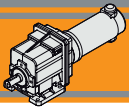


ECMG...F



ECMG...H/F



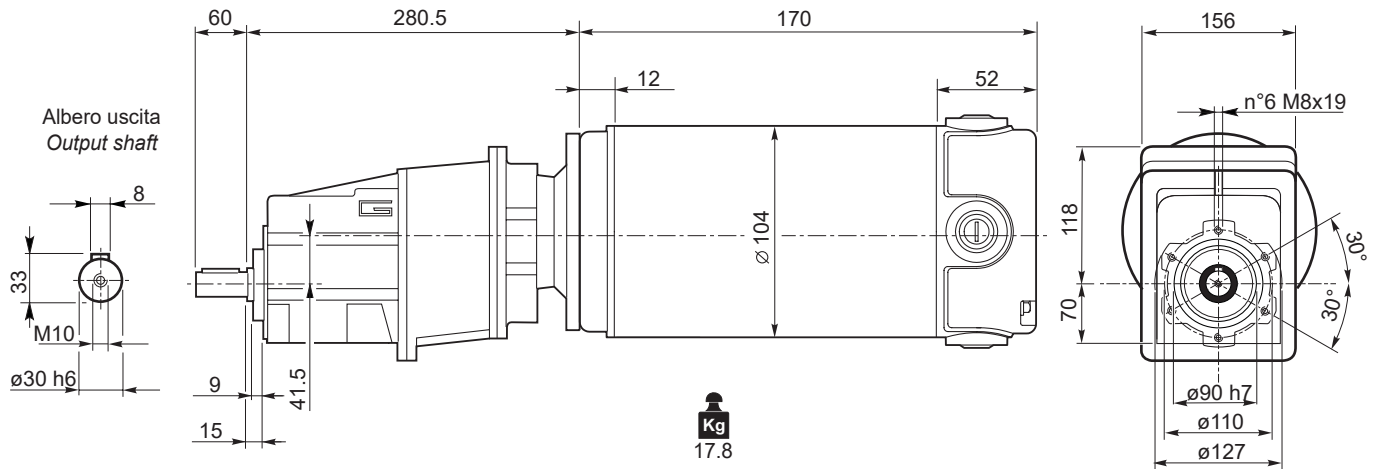


Dimensioni

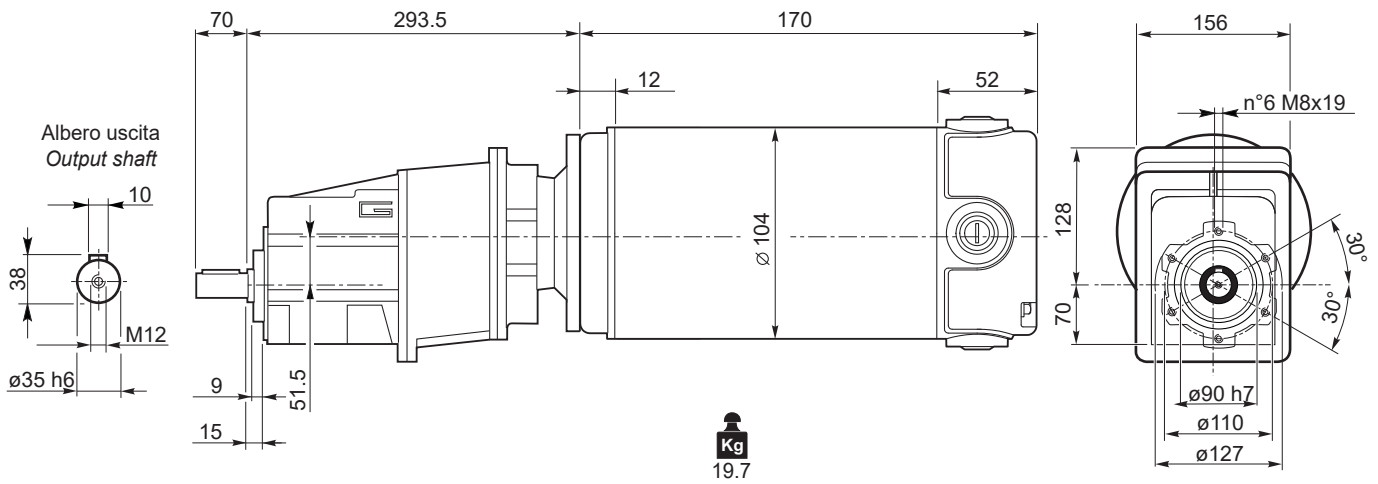
Dimensions

ECMG..U

ECMG250/033 U



ECMG250/043 U



Motori / Motors IP66



I8

ECMG...H



L30

ECMG...F

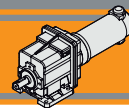


L31

ECMG...H/F



L32

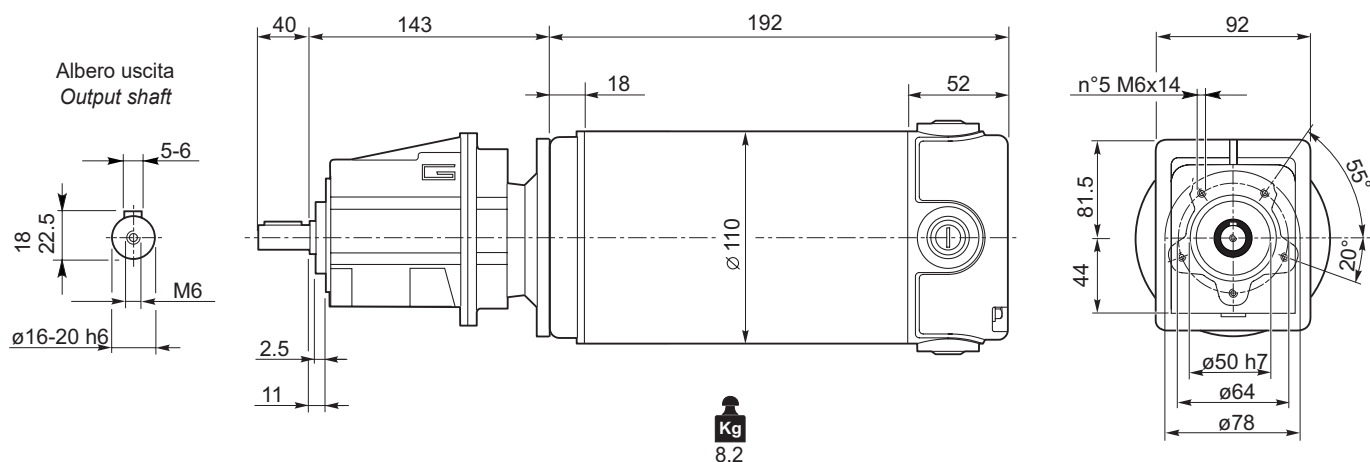


Dimensioni

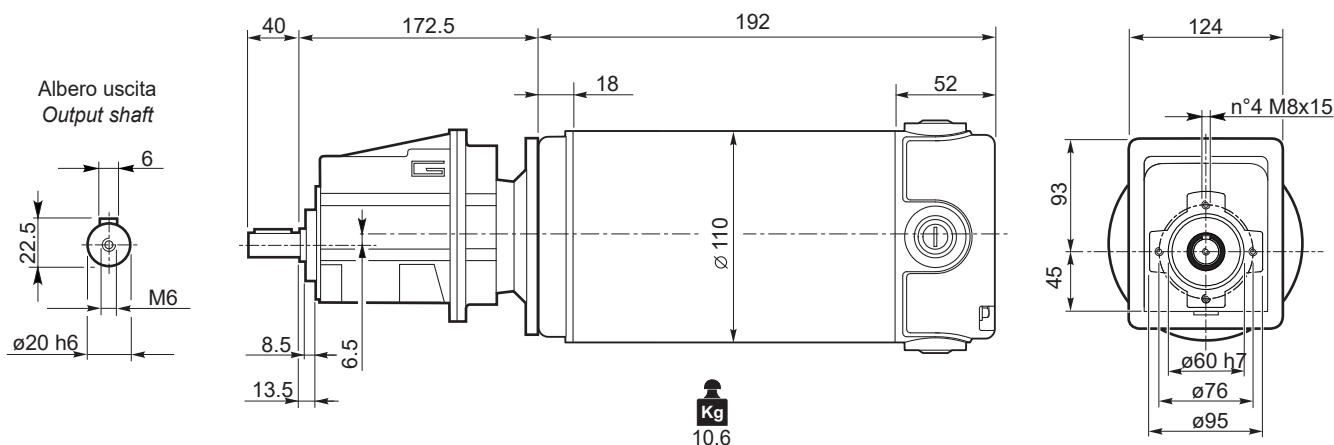
Dimensions

ECMG..U

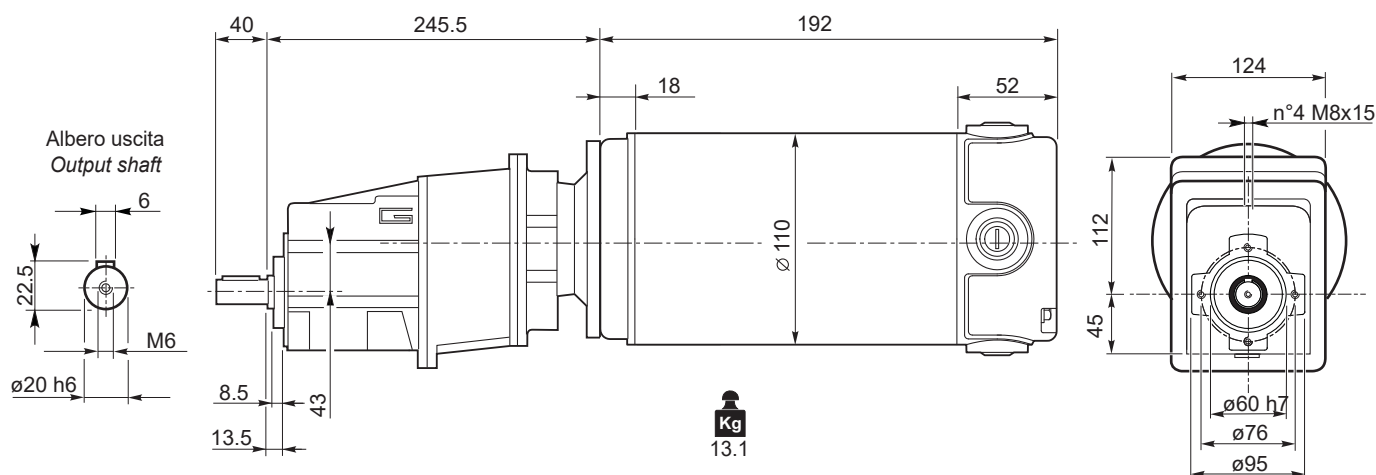
ECMG350/002 U



ECMG350/012 U



ECMG350/013 U



Freno / Brake



H23

Motori / Motors IP66



I10

ECMG...H



L30

ECMG...F

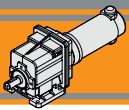


L31

ECMG...H/F



L32

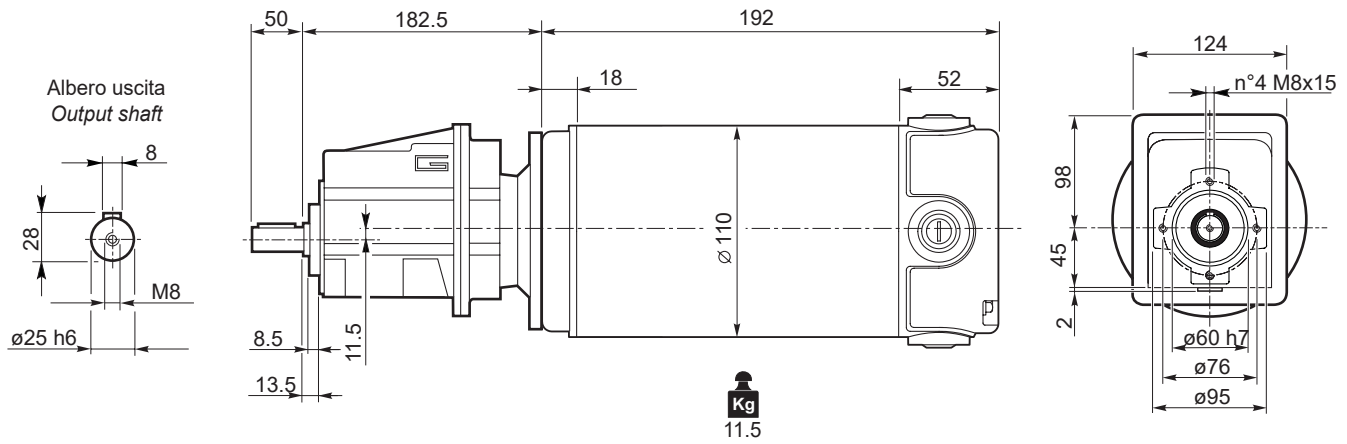


Dimensioni

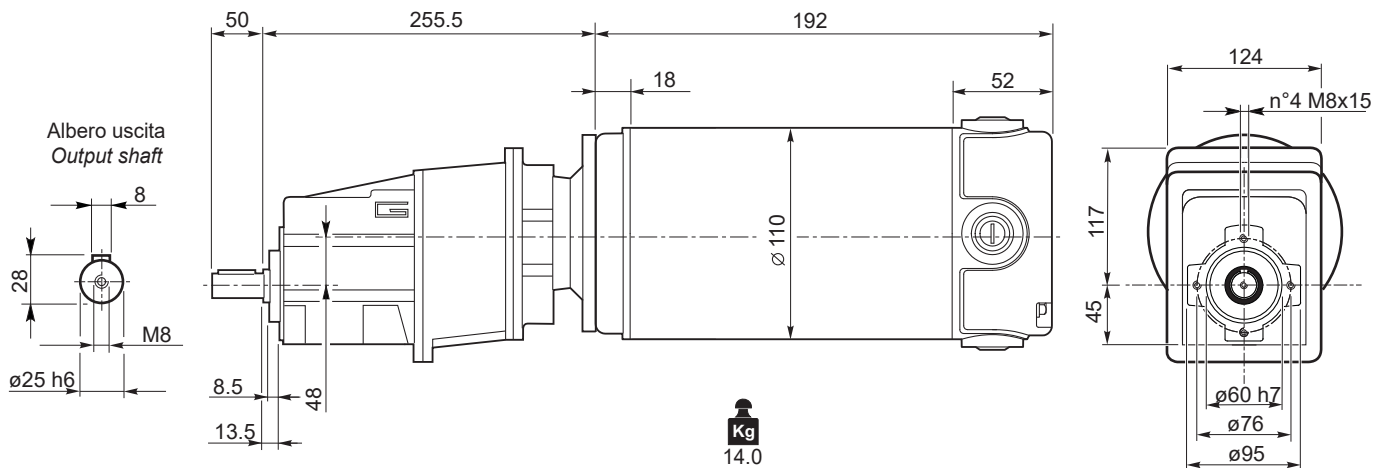
Dimensions

ECMG..U

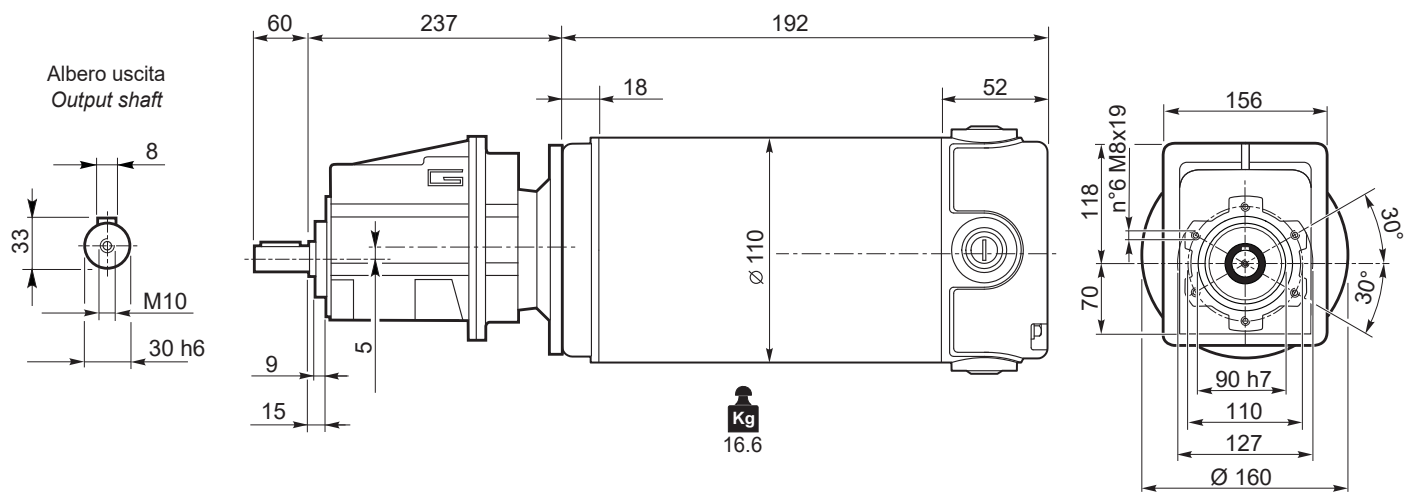
ECMG350/022 U



ECMG350/023 U



ECMG350/032 U



Freno / Brake



H23

ECMG...H



L30

ECMG...F



L31

ECMG...H/F



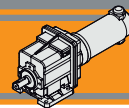
L32

Motori / Motors IP66



I10

Nota: Motore IP66 non disponibile per ECMG350/032
Note: IP66 motor not available for ECMG350/032

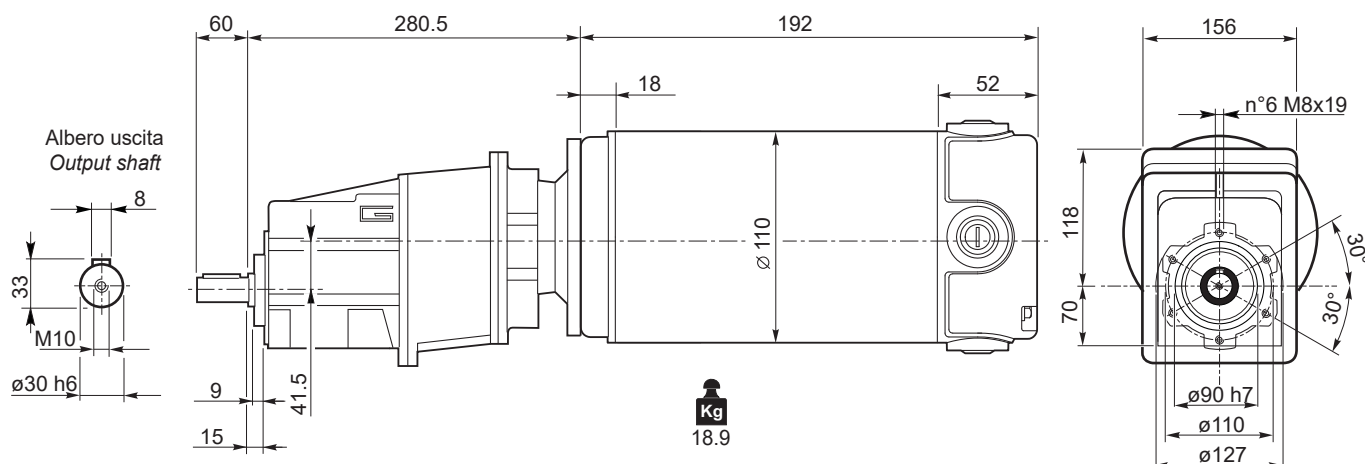


Dimensioni

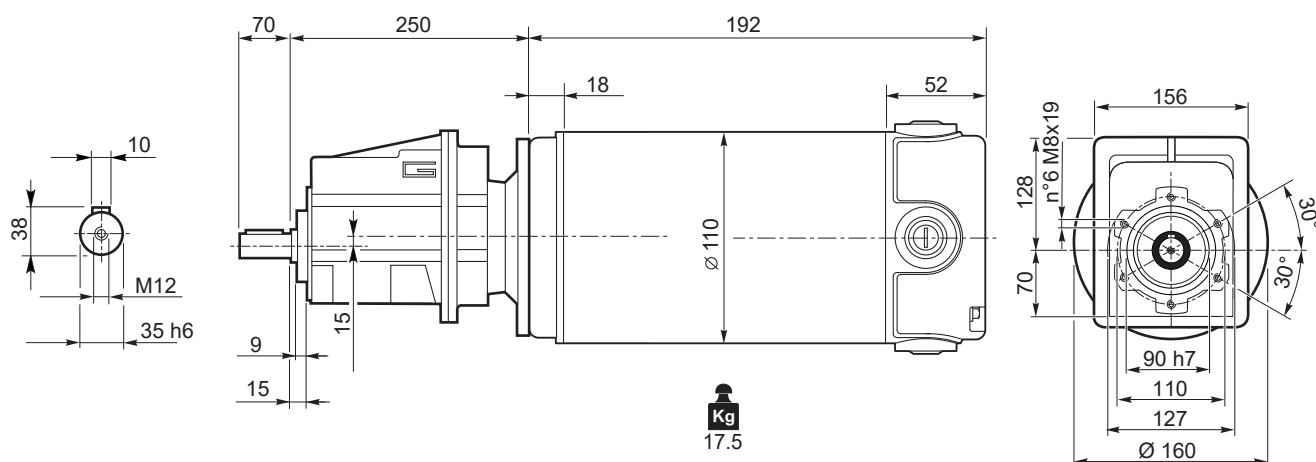
Dimensions

ECMG..U

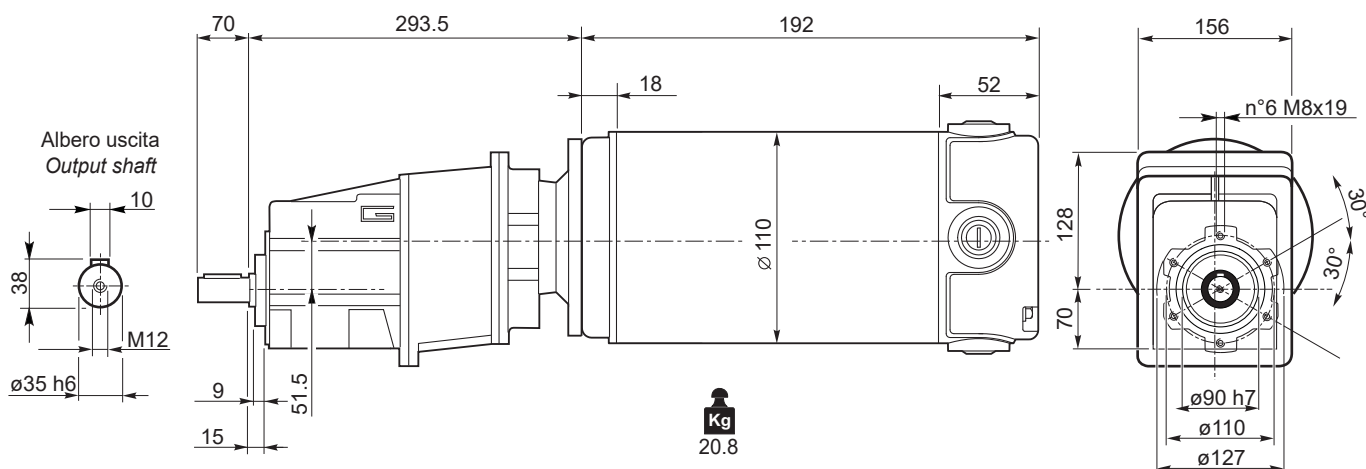
ECMG350/033 U



ECMG350/042 U



ECMG350/043 U



Freno / Brake



ECMG...H



ECMG...F



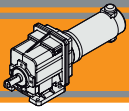
ECMG...H/F



Motori / Motors IP66



Nota: Motore IP66 non disponibile per ECMG350/042
Note: IP66 motor not available for ECMG350/042

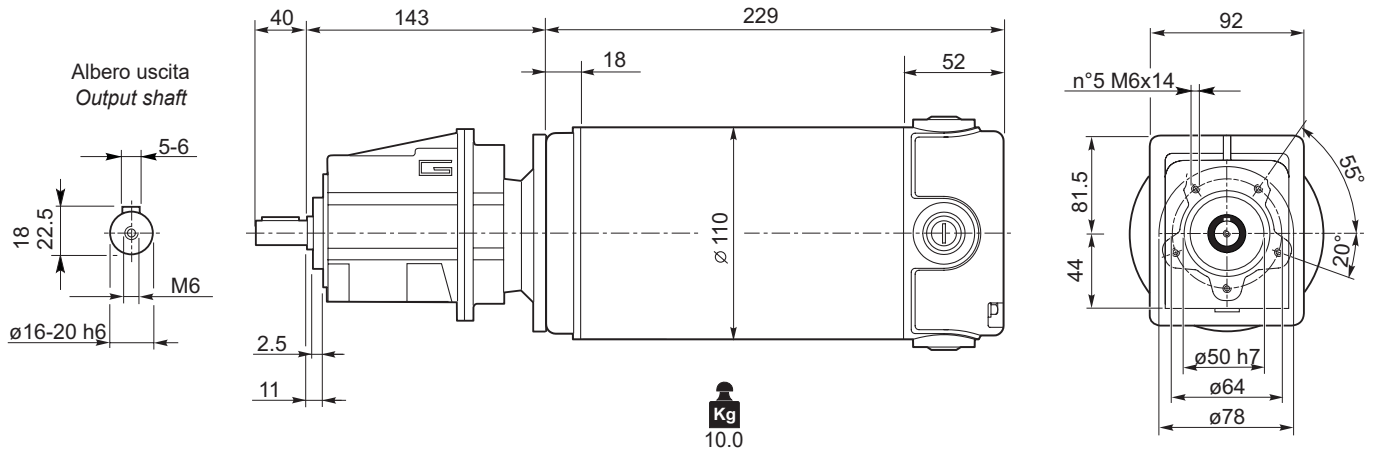


Dimensioni

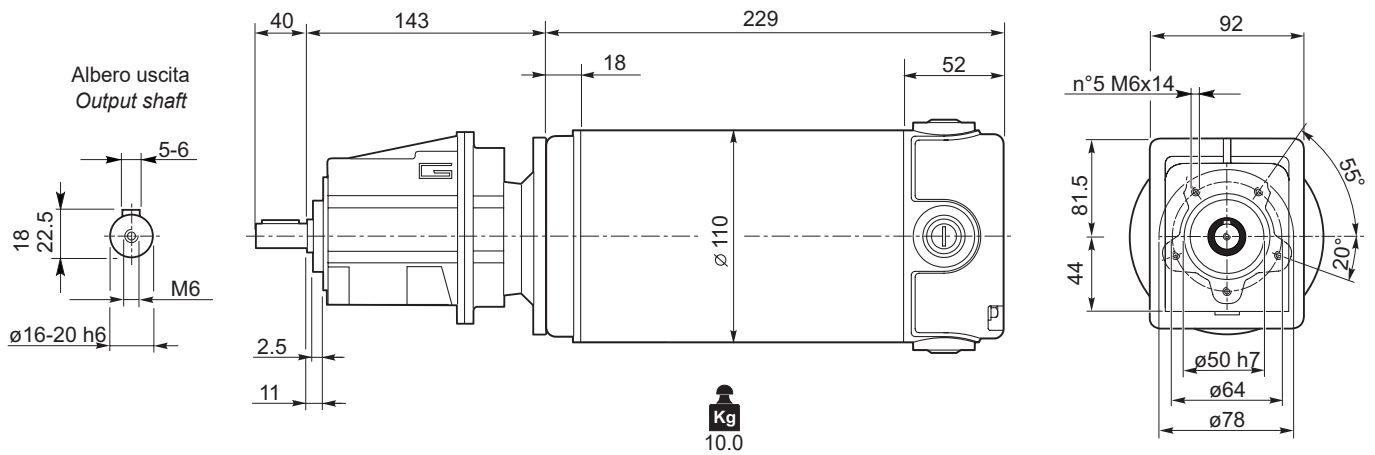
Dimensions

ECMG..U

ECMG600/002 U



ECMG600/002 U



Freno / Brake



H23

Motori / Motors IP66



I12

ECMG...H



L30

ECMG...F

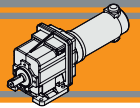


L31

ECMG...H/F



L32

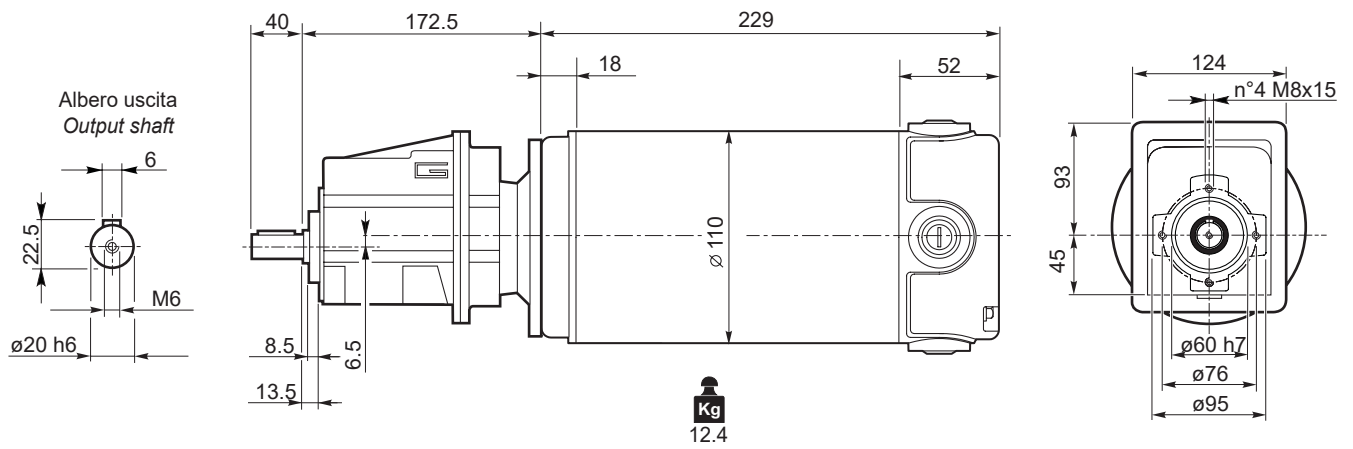


Dimensioni

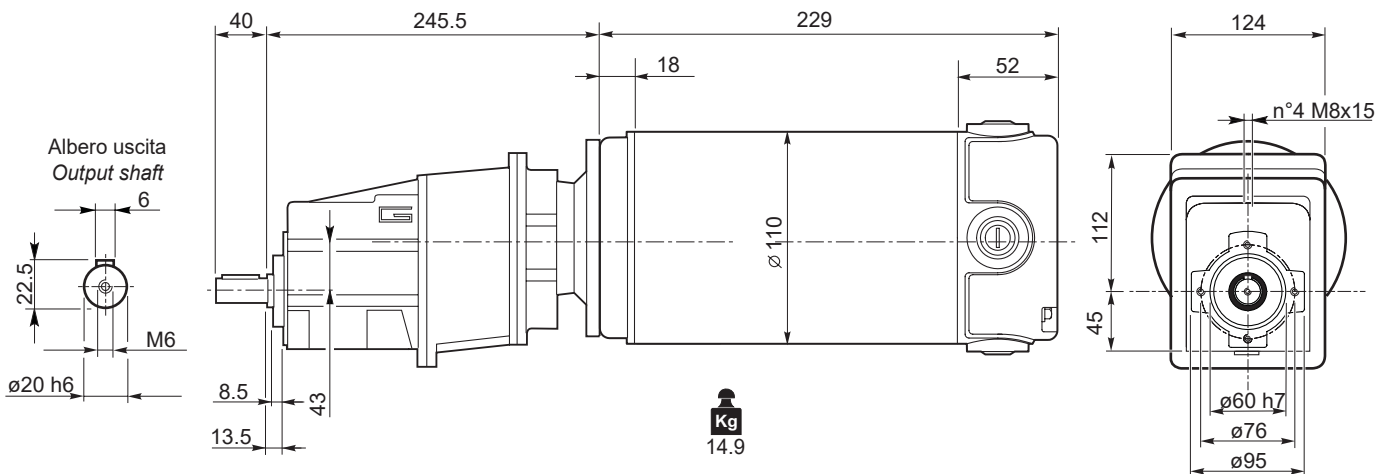
Dimensions

ECMG..U

ECMG600/012 U



ECMG600/013 U



ECMG

Freno / Brake



H23

Motori / Motors IP66



I12

ECMG...H



L30

ECMG...F

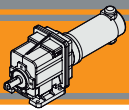


L31

ECMG...H/F



L32

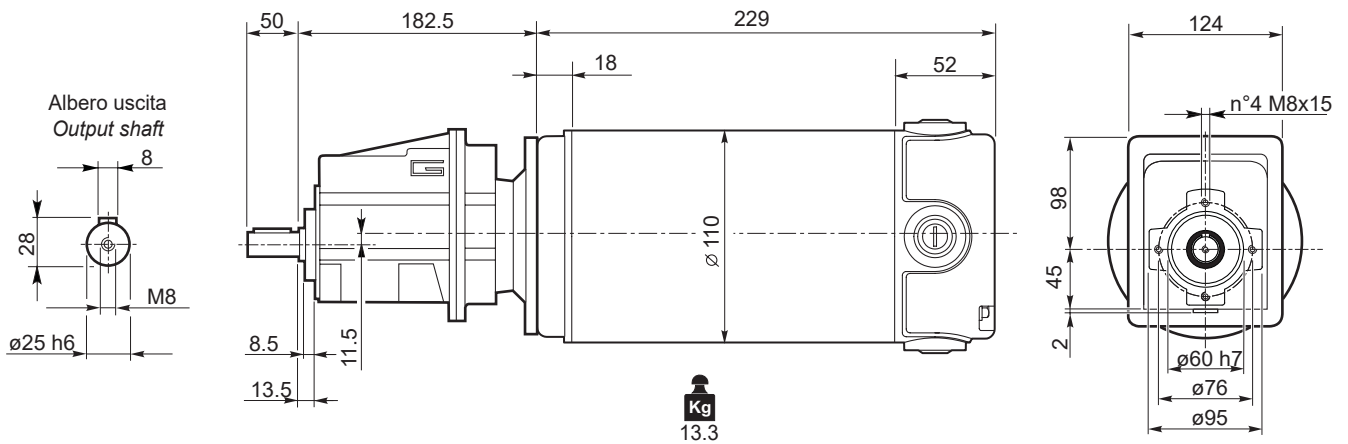


Dimensioni

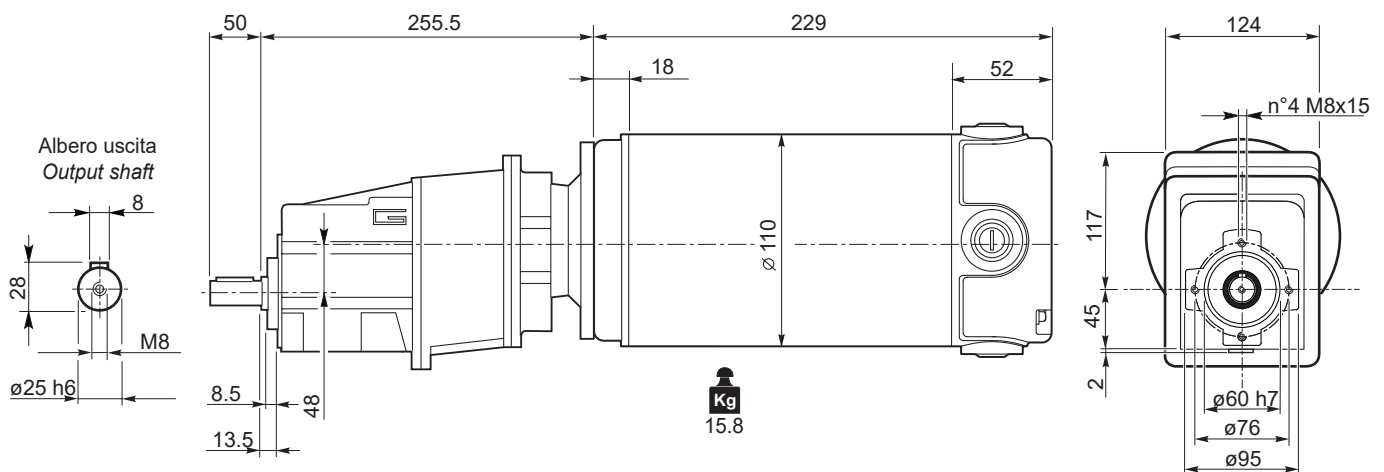
Dimensions

ECMG..U

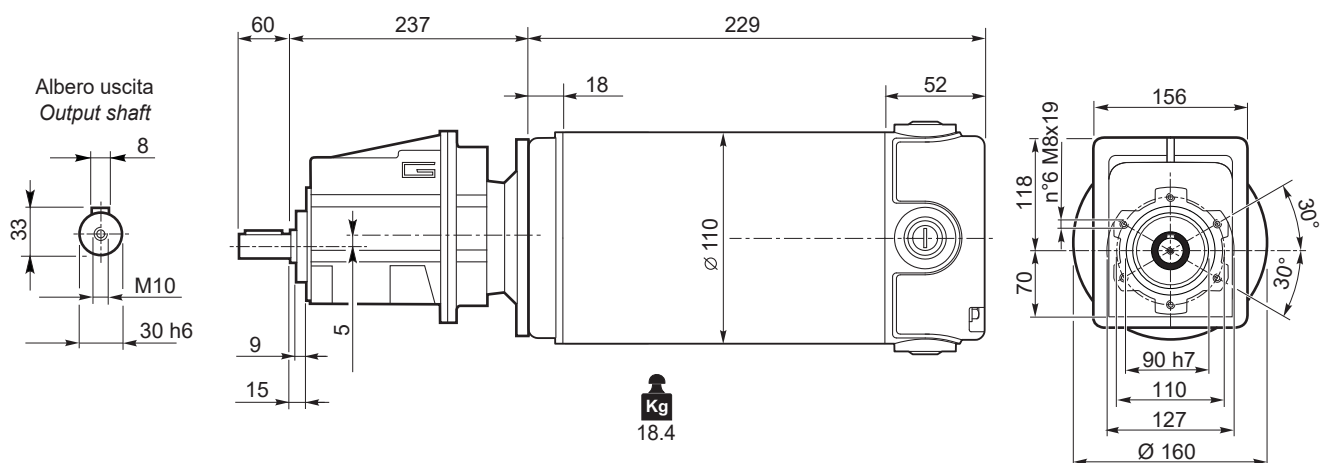
ECMG600/022 U



ECMG600/023 U



ECMG600/032 U



Freno / Brake



H23

ECMG...H



L30

ECMG...F



L31

ECMG...H/F



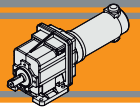
L32

Motori / Motors IP66



I12

Nota: Motore IP66 non disponibile per ECMG600/032
Note: IP66 motor not available for ECMG600/032

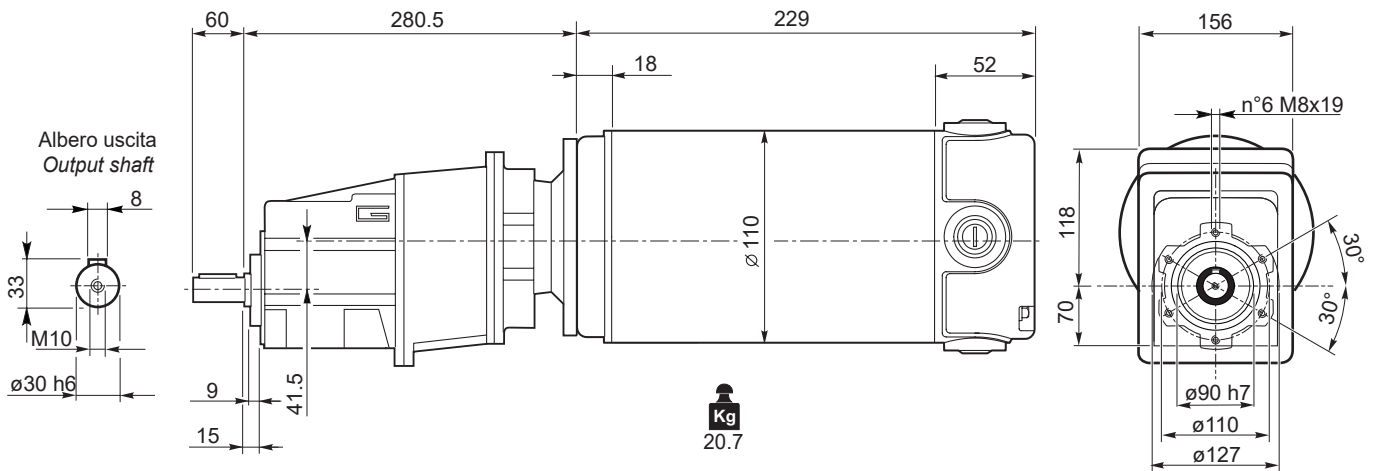


Dimensioni

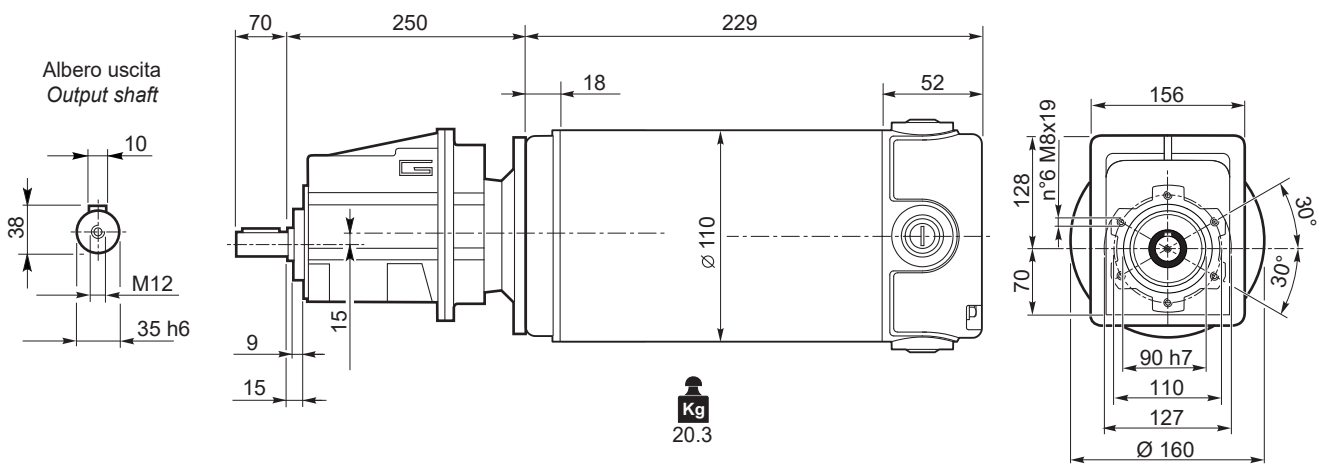
Dimensions

ECMG..U

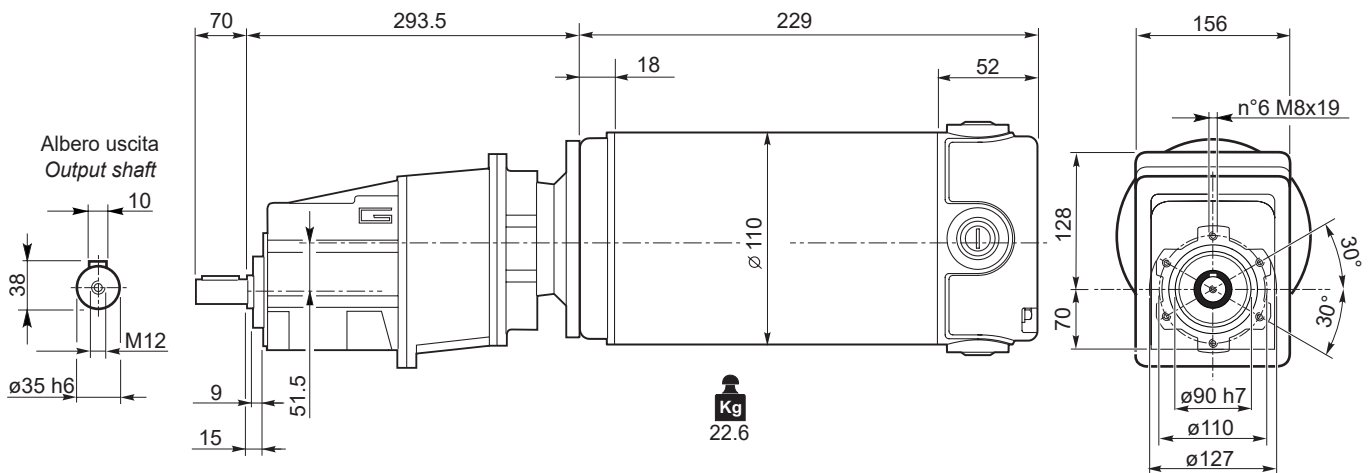
ECMG600/033 U



ECMG600/042 U



ECMG600/043 U



Freno / Brake

→ **H23**

ECMG...H

→ **L30**

ECMG...F

→ **L31**

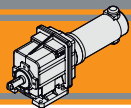
ECMG...H/F

→ **L32**

Motori / Motors IP66

→ **I12**

Nota: Motore IP66 non disponibile per ECMG600/042
Note: IP66 motor not available for ECMG600/042

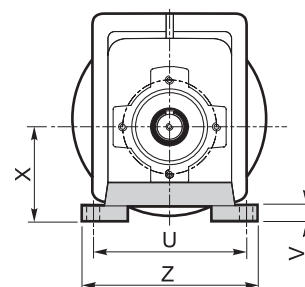
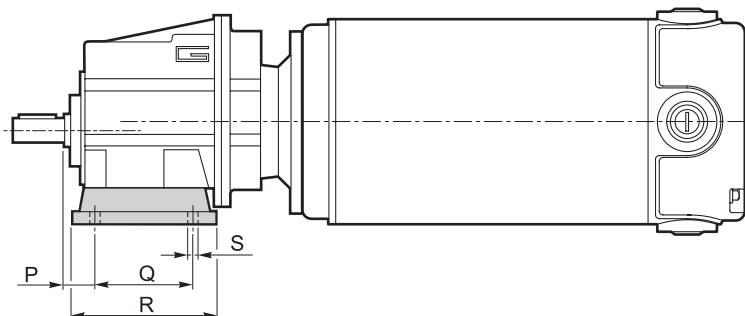


Dimensioni

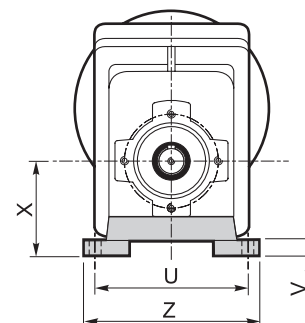
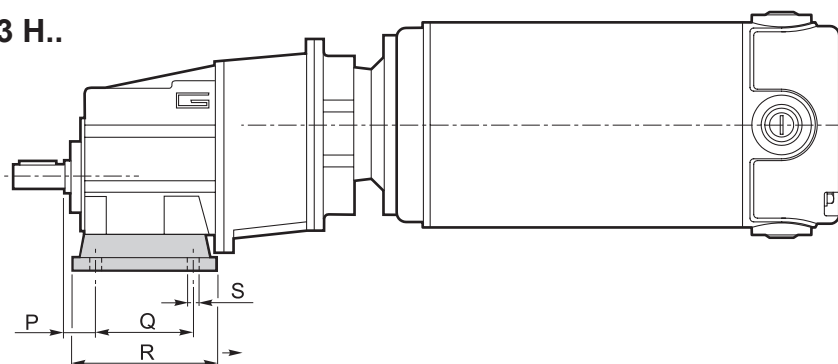
Dimensions

ECMG..H

ECMG..2 H..



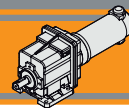
ECMG..3 H..



Versione H / H Version

CMG	P	Q	R	S	U	V	X	Z	Piede / Foot	
									Tipo / Type	Peso / Weight [kg]
002	18	60	80	9	100	10	60	120	H60	0.2
	18	80	104	9	110 - 120	10	75	145	H75	0.3
	18	50 - 87	110	9	110	10	85	135	H85	0.4
012 013	20	85	108	9	115	12	65	139	H65	0.7
	18	80	118	9	110	12	75	140	H75	1.0
	25	85	120	9	120	12	80	140	H80	1.1
	18	50 - 87	118	9	110	12	85	130	H85	1.2
	25	130	154	9	110	12	90	135	H90	1.5
022 023	18	60 - 107.5	135	11	130	12	100	155	H100	1.7
	20	85	108	9	115	12	65	139	H65	0.7
	18	80	118	9	110	12	75	140	H75	1.0
	25	85	120	9	120	12	80	140	H80	1.1
	18	50 - 87	118	9	110	12	85	130	H85	1.2
032 033	25	130	154	9	110	12	90	135	H90	1.5
	18	60 - 107.5	135	11	130	12	100	155	H100	1.7
	30	105	136	14	160	14	95	194	H95	1.5
	30	100	150	11	150	14	110	185	H110	1.9
	18	70			160					
042 043	30	165	195	14	135	14	115	170	H115	2.2
	35	110	160	14	170	14	120	210	H120	2.6
	30	105	136	14	160	14	95	194	H95	1.5
	30	100	150	11	150	14	110	185	H110	1.9
18	70	160								
042 043	30	165	195	14	135	14	115	170	H115	2.2
	35	110	160	14	170	14	120	210	H120	2.6

Preferenziale / Preferred

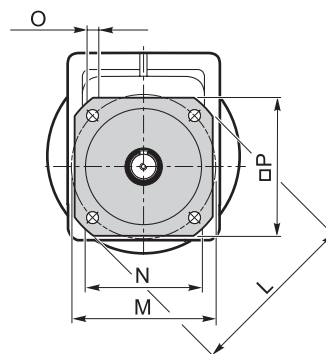
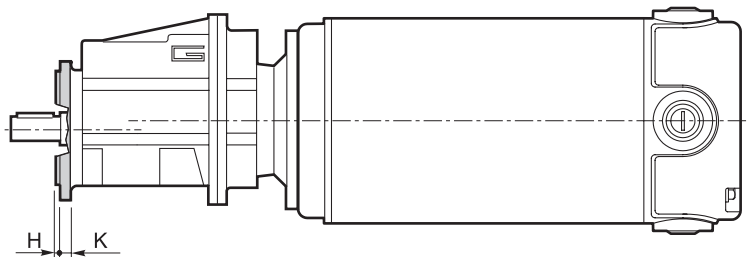


Dimensioni

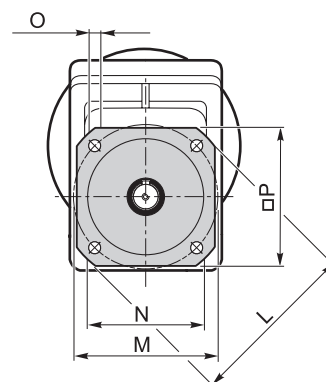
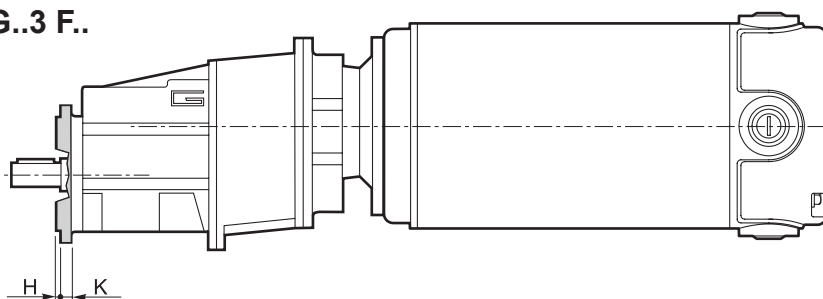
Dimensions

ECMG..F

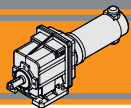
ECMG..2 F..



ECMG..3 F..



Versione F / F Version									
CMG	H	K	L	M	N f7	O	P	Flangia / Flange	
								Tipo / Type	Peso / Weight [kg]
002	3.5	7	105	85	70	6.5	90	F105	0.1
	3.5	8	120	100	80	7	100	F120	0.2
	3.5	8	140	115	95	9	115	F140	0.2
012 013	3	9	120	100	80	9	106	F120	0.5
	3.5	9	140	115	95	9	115	F140	0.8
	3.5	9	160	130	110	9	126	F160	1.1
	3.5	11	200	165	130	11	165	F200	1.8
022 023	3	9	120	100	80	9	106	F120	0.5
	3.5	9	140	115	95	9	115	F140	0.8
	3.5	9	160	130	110	9	126	F160	1.1
	3.5	11	200	165	130	11	165	F200	1.8
032 033	3.5	11	160	130	110	9	140	F160	1.0
	3.5	11	200	165	130	11	165	F200	1.8
	4	13	250	215	180	14	215	F250	2.9
042 043	3.5	11	160	130	110	9	140	F160	1.0
	3.5	11	200	165	130	11	165	F200	1.8
	4	13	250	215	180	14	215	F250	2.9



Dimensioni

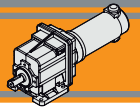
Dimensions

Versione H / H Version											Combinazioni possibili H/F Possible combinations H/F						
CMG	P	Q	R	S	U	V	X	Z	Piede / Foot		F105	F120	F140	F160	F200	F250	F300
									Tipo / Type	Peso / Weight [kg]							
002	18	60	80	9	100	10	60	120	H60	0.2	•	•	•				
	18	80	104	9	110 - 120	10	75	145	H75	0.3	•	•	•				
	18	50 - 87	110	9	110	10	85	135	H85	0.4	•	•	•				
012 013	20	85	108	9	115	12	65	139	H65	0.7		•	•				
	18	80	118	9	110	12	75	140	H75	1.0		•	•	•			
	25	85	120	9	120	12	80	140	H80	1.1		•	•	•			
	18	50 - 87	118	9	110	12	85	130	H85	1.2		•	•	•			
	25	130	154	9	110	12	90	135	H90	1.5		•	•	•	•		
	18	60 - 107.5	135	11	130	12	100	155	H100	1.7		•	•	•	•		
022 023	20	85	108	9	115	12	65	139	H65	0.7		•	•				
	18	80	118	9	110	12	75	140	H75	1.0		•	•	•			
	25	85	120	9	120	12	80	140	H80	1.1		•	•	•			
	18	50 - 87	118	9	110	12	85	130	H85	1.2		•	•	•			
	25	130	154	9	110	12	90	135	H90	1.5		•	•	•	•		
	18	60 - 107.5	135	11	130	12	100	155	H100	1.7		•	•	•	•		
032 033	30	105	136	14	160	14	95	194	H95	1.5				•	•		
	30	100	150	11	150	14	110	185	H110	1.9				•	•		
	18	70			160												
	30	165	195	14	135	14	115	170	H115	2.2				•	•	•	
	35	110	160	14	170	14	120	210	H120	2.6				•	•	•	
042 043	30	105	136	14	160	14	95	194	H95	1.5				•	•		
	30	100	150	11	150	14	110	185	H110	1.9				•	•		
	18	70			160												
	30	165	195	14	135	14	115	170	H115	2.2				•	•	•	
	35	110	160	14	170	14	120	210	H120	2.6				•	•	•	

■ Preferenziale / Preferred

• Combinazioni possibili H/F / Possible combinations H/F

Versione F / F Version									
CMG	H	K	L	M	N f7	O	P	Flangia / Flange	
								Tipo / Type	Peso / Weight [kg]
002	3.5	7	105	85	70	6.5	90	F105	0.1
	3.5	8	120	100	80	7	100	F120	0.2
	3.5	8	140	115	95	9	115	F140	0.2
012 013	3	9	120	100	80	9	106	F120	0.5
	3.5	9	140	115	95	9	115	F140	0.8
	3.5	9	160	130	110	9	126	F160	1.1
	3.5	11	200	165	130	11	165	F200	1.8
022 023	3	9	120	100	80	9	106	F120	0.5
	3.5	9	140	115	95	9	115	F140	0.8
	3.5	9	160	130	110	9	126	F160	1.1
	3.5	11	200	165	130	11	165	F200	1.8
032 033	3.5	11	160	130	110	9	140	F160	1.0
	3.5	11	200	165	130	11	165	F200	1.8
	4	13	250	215	150	14	215	F250	2.9
042 043	3.5	11	160	130	110	9	140	F160	1.0
	3.5	11	200	165	130	11	165	F200	1.8
	4	13	250	215	150	14	215	F250	2.9

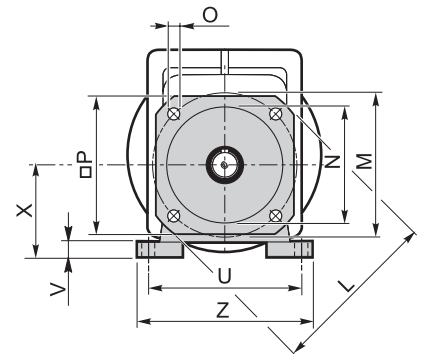
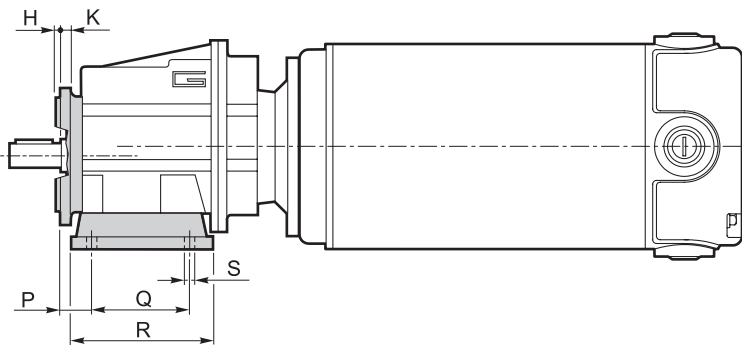


Dimensioni

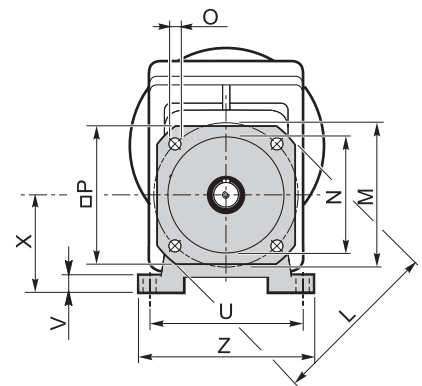
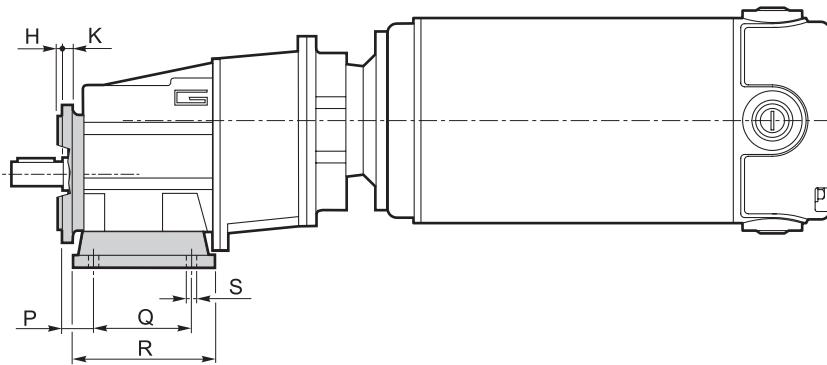
Dimensions

ECMG..H../F..

ECMG..2 H../F..



ECMG..3 H../F..



**TRANSTECNO SRL
HEADQUARTERS**

Company subject to the management
and coordination of INTERPUMP GROUP SPA
Via Caduti di Sabbiuno, 11/D-E
40011 Anzola dell'Emilia (BO)
ITALY
T+39 051 64 25 811
F +39 051 73 49 43
sales@transtecno.com
www.transtecno.com

TRANSTECNO®
the modular gearmotor
MEMBER OF INTERPUMP GROUP

CATDCALU0521



**HANGZHOU TRANSTECNO POWER
TRANSMISSIONS CO LTD**
No.4 Xiuyan Road Fengdu Industry Zone
Pingyao Town Yuhang District
Hangzhou City, Zhejiang Province
311115 – CHINA
T +86 571 86 92 02 60
F +86 571 86 92 18 10
info-china@transtecno.cn
www.transtecno.cn

MA TRANSTECNO S.A.P.I. DE C.V.
Av. Mundial # 176, Parque Industrial
JM Apodaca, Nuevo León,
C.P. 66600 – MÉXICO
T +52 8113340920
info@transtecno.com.mx
www.transtecno.com.mx

**TRANSTECNO IBÉRICA
THE MODULAR GEARMOTOR, S.A.**
Carrer de la Ciència, 45
08840 Viladecans (Barcelona) – SPAIN
T +34 931 598 950
info@transtecno.es
www.transtecno.es

TRANSTECNO B.V.
De Stuwdam, 43
3815 KM Amersfoort – NETHERLANDS
T +31(0) 33 45 19 505
F +31(0) 33 45 19 506
info@transtecno.nl
www.transtecno.nl

www.transtecno.com

TRANSTECNO AANDRIJFTECHNIEK B.V.
De Stuwdam 43
3815 KM Amersfoort – NETHERLANDS
T +31 (0) 33 20 4 7 006
info@transtecnoaandrijftechniek.nl
www.transtecnoaandrijftechniek.nl

TRANSTECNO USA
8 Creek Parkway,
Boothwyn PA 19061-8136
UNITED STATES
T +1 (610) 4970154
F +1 (610) 497 6085

14561 Fryelands Blvd SE
Monroe, WA 98272 - UNITED STATES
T +1 360-863-1300
F +1 360-863-1303
usaoffice@transtecno.com
www.transtecno.com

TRANSTECNO CANADA
51 B Caldari Road Unit 10
Vaughan, ON L4K 4G3 – CANADA
T +1 905 761 0762
F +1 905 761 9265
canadaoffice@transtecno.com
www.transtecno.com

TRANSTECNO CHILE-PERU
Av. Los Libertadores 41
Parque Industrial - Los Libertadores 16.500
Santiago, Colina – CHILE
T +56 2 29633870

Carretera Panamericana Sur KM 29.5,
Interior I-3, Z.I. Lurin - PERU
T +51 1 3546259 / + 51 1 3434231
chileoffice@transtecno.com
www.transtecno.com

SALES OFFICE BRAZIL
Rua Dr. Freire Alemão 155 / 402 - CEP. 90450-060
Auxiliadora Porto Alegre RS - BRAZIL
T +55 51 3251 5447
F +55 51 3251 5447
M +55 51 811 45 962
braziloffice@transtecno.com
www.transtecno.com.br

SALES OFFICE OCEANIA
44 Northview drive, Sunshine west 3020
Victoria - AUSTRALIA
T +61 03 9312 4722
F +61 03 9312 4714
M +61 0438060997
oceaniaoffice@transtecno.com
www.transtecno.com.au

SALES OFFICE INDIA
Woodbine 2003/04, Everest World
Kolshet Road, Thane west Mumbai 400607
INDIA
T +91 982 061 46 98
indiaoffice@transtecno.com
www.transtecno.com

SALES OFFICE SOUTH KOREA
772-41, Bongdong-ro, Bongdong-eup, Wanju-goon
Chonbuk, 55313
SOUTH KOREA
T +82 70 8867 8897
F +82 504 199 2107
M +82 10 5094 2107
koreaoffice@transtecno.com
www.transtecno.com