

Hinge Damper

Fixed Type

Bi-Directional

Uni-Directional

Adjustable type

Self-adjusting

PTH-A1 Series

RoHS Compliant

●Products specification might be changed without notice.

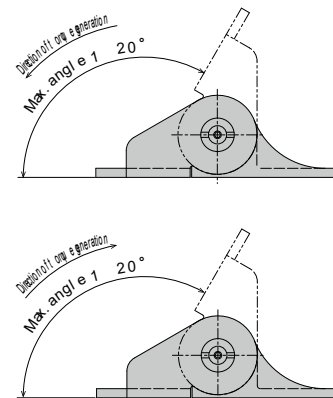
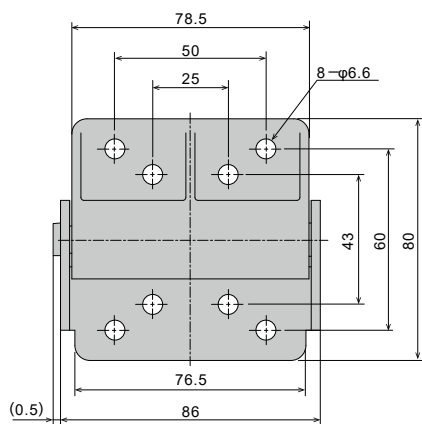
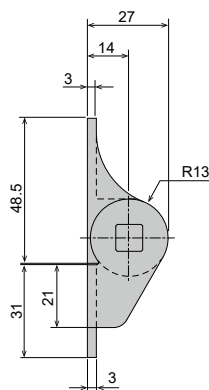


Specifications

Model	Max. torque	Max. reverse torque
PTH-A1-1-503	5N·m	0.6N·m or lower
PTH-A1-2-503	(50 kgf·cm)	(6kgf·cm or lower)
PTH-A1-1-104	10N·m	1N·m or lower
PTH-A1-2-104	(100 kgf·cm)	(10kgf·cm or lower)

* Max. angle 120°
 * Operating temperature -5~50°C
 * Weight 410g

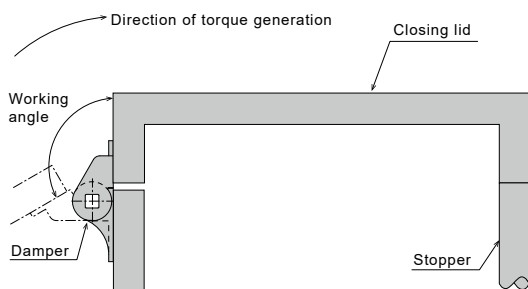
* Main body material Zinc die-cast (ZDC)
 + silver coating
 * Hinge material SUS304 Silicone
 * Oil type oil



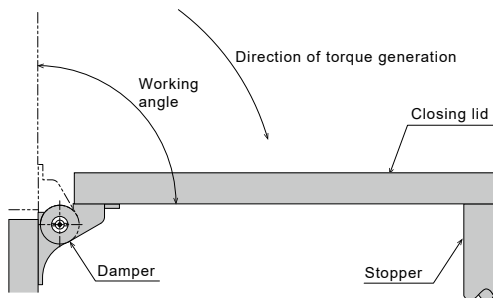
How to Use the Damper

1. There are two ways to attach the damper, as shown below.

○Attached externally(PTH-A1-1***)



○Attached internally(PTH-A1-2***)

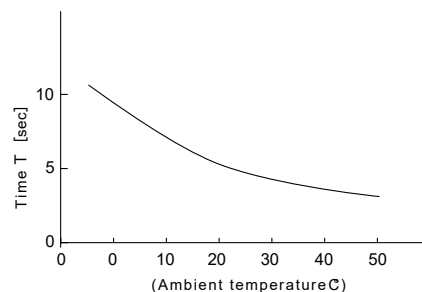


2. This damper is only for horizontal application. Please do not use this damper for vertical application.

Damper Characteristics

1. Temperature characteristics

Damper characteristics vary according to the ambient temperature. In general, the damper characteristics become weaker as the temperature increases, and become stronger as the temperature decreases. This is because the viscosity of the oil inside the damper varies according to the temperature. When the temperature returns to normal, the damper characteristics will return to normal as well.



2. The working angle of the hinge is 120°.

Operating the hinge beyond this angle will cause damage to the hinge. Please ensure that an external stopper is in place.