

GENERAL CATALOGUE

Motek Electric Corporation • General Catalogue • 11



Motorize Our World • Lift Up Your Life

MOTECK®



Contents



04 / **About Moteck**

06 / **Application**

08 / **Product**

08 __ Linear Actuator

36 __ Control Box

47 __ Control

60 __ Accessory

64 __ Lifting Column

66 __ Gear Motor

68 __ Double Motor

70 __ Power Supply

72 __ Adjustable Desk



Drawing on a heritage of more than 20 years in designing and producing reliable electromotive drive and control system, Moteck® products and solutions are comprehensively adopted by well-known customers worldwide. Started business in Satellite TV Antenna Motorization, we have been successfully expanding our business to market sectors in medical, homecare, furniture, industrial automation, mobility off highway, solar tracker, and gate opener.

The quality management system with ISO 9001 certified is solid executed for the whole organization. All products are tested and certified by international standards, CE, UL, PSE and RoHS, according to different countries and industrial requirements. With strong capability of manufacturing, product development and system integration, we can meet specific customization needs. Now we are strategic partner of many customers in US, Europe, Japan, and China, to design whole electromotive drive system for their products.



Advantage

- Satisfied Quality to Price Ratio
- High Creativity and Flexibility
- Customization Available for Diversified Specification
- Harmonious Integration of Electronic and Mechanical Engineering
- Professional Global Operations
- Manufacturing Capabilities with Large Scale Capacity

Location

Head Office: Taipei, Taiwan

Factory: Taoyuan, Taiwan & Suzhou, China



Taipei, Taiwan



Taoyuan, Taiwan



Suzhou, China



Application

Our products can be used in one or multiple application sectors. We offer linear actuator, control box, hand control, and accessory, or a complete kit solution for each application. In this catalogue, you can easily find the application sectors that each product is mainly designed for by referring its icon. Below is describing the icon representing for each application sector and its typical examples.



Furniture Line

The icon indicates products designed for furniture applications with improved ergonomics or comforts such as intelligent furniture sets, adjustable home-living beds, and recliners...etc. Our systems can work with mobile phone application (Android/iOS).



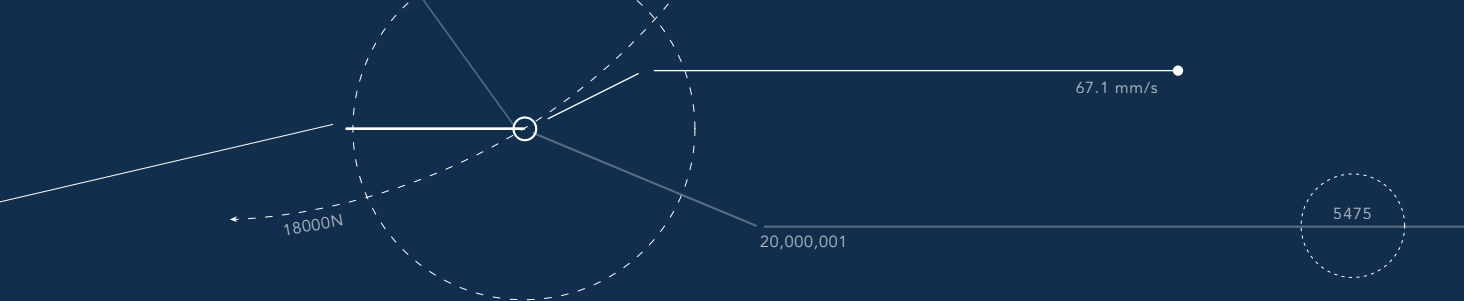
Office Line

The icon indicates products designed for sit/stand desks. Standing office is a new trend now, and intelligent lifting can generate a healthier environment, and guarantee better work efficiency.



Medical Care Line

The icon indicates products designed for medical and homecare applications helping patients and elder/disabled people who require assistance in their living activities, such as sit- to-stand patient lifts, nursing beds, power wheel chairs, and shower beds/chairs...etc.



Leisure & Recreation Line

The icon indicates products designed for leisure and recreation applications that can be applied in fitness industry, camper vans, and fitting bikes...etc.



Industrial Line

The icon indicates products designed for industrial automation such as process control equipment, conveyor systems, and skylight openers...etc. Both Ball Screw and ACME drive are available for customers to choose.



Outdoor Power Application Line

The icon indicates products designed for outdoor power applications that can be applied in sectors including gate/window openers, marine industry, mowers, off-road-vehicle, and fork lifts...etc.



Agricultural Line

The icon indicates products designed for agricultural applications that can be applied in harvesters, electric tractors, skid-steer loaders, and electric bucket loaders...etc.

Linear Actuator

FD10



Input: 24V DC
Max. Push Load: 1000N
Max. Pull Load: 500N
Typical Speed at No Load: 15.1mm/s
Stroke: 50~300mm
Duty Cycle: 10%

Min. Installation Dimension: 120mm+Stroke
Certificate: CE, EMC directive 2014/30/EU
Option:
 Hall effect sensor
 Mechanical push only extension tube
 PTC thermistor for thermal protection
 With direct-cut cable to work without control box



Model No.	Max. Push Load (N)	Max. Pull Load (N)	Typical Speed (mm/s)		Typical Current (A)	
			No Load	Full Load	No Load	Full Load
FD10-24SF4-XXX.XXX-XXXXX0X	1000	500	8.4	5.5	0.5	1.5
FD10-24SF6-XXX.XXX-XXXXX0X	1000	500	11.5	6.2	0.5	1.7
FD10-24SF8-XXX.XXX-XXXXX0X	500	500	15.1	9.8	0.5	1.3

FD20



Input: 24V DC
Max. Push Load: 2000N
Max. Pull Load: 2000N
Typical Speed at No Load: 48.0mm/s
Stroke: 50~300mm
Duty Cycle: 10%

Min. Installation Dimension: 135mm+Stroke
Certificate: CE, EMC directive 2014/30/EU, UL962
Option:
 Hall effect sensor
 Mechanical push only extension tube
 Mechanical brake
 With direct-cut cable to work without control box



Model No.	Max. Push/Pull Load (N)	Self-locking ability (N)	Typical Speed (mm/s)		Typical Current (A)	
			No Load	Full Load	No Load	Full Load
FD20-24-A3-XXX.XXX-CXX	2000	2000	4.3	3.3	0.3	2.0
FD20-24-A4-XXX.XXX-CXX	2000	1500	5.6	4.0	0.3	2.3
FD20-24-K4-XXX.XXX-CXX	2000	1000	11.1	5.6	0.3	2.5
FD20-24-A8-XXX.XXX-CXX	1000	700	11.1	6.2	0.3	2.0
FD20-24-K8-XXX.XXX-CXX	1000	700	22.2	11.5	0.3	2.5
FD20-24-AC-XXX.XXX-CXX	1000	500	16.6	8.7	0.3	2.3
FD20-24-KC-XXX.XXX-CXX	500	300	33.3	21.0	0.3	2.0
FD20-24-N6-XXX.XXX-CXX	1500	1500	26.7	21.3	0.3	2.3
FD20-24-W6-XXX.XXX-CXX	1500	1500	48.0	28.0	0.3	2.5

Please refer to the product data sheet for the definition of Model No.

FD40

Input: 24V DC
 Max. Push Load: 4000N
 Max. Pull Load: 2000N
 Typical Speed at No Load: 30.3mm/s
 Stroke: 50~400mm
 Duty Cycle: 10%

Min. Installation Dimension: 110mm+Stroke
Certificate: CE, EMC directive 2014/30/EU
Option:
 Hall effect sensor
 Mechanical push only extension tube
 PTC thermistor for thermal protection
 With direct-cut cable to work without control box
 Enhanced motor



Model No.	Max. Push Load (N)	Max. Pull Load (N)	Typical Speed (mm/s)		Typical Current (A)	
			No Load	Full Load	No Load	Full Load
FD40-24DF4-XXX.XXX-XXXXX0X	1500	1500	7.7	5.8	0.3	2.5
FD40-24DF8-XXX.XXX-XXXXX0X	500	500	16.0	13.5	0.3	1.8
FD40-24EF4-XXX.XXX-XXXXX0X	4000	2000	8.4	4.0	0.2	3.3
FD40-24EF6-XXX.XXX-XXXXX0X	3000	2000	11.9	6.3	0.2	3.3
FD40-24EF8-XXX.XXX-XXXXX0X	2500	2000	15.9	8.1	0.3	3.3
FD40-24EH8-XXX.XXX-XXXXX0X	1500	1500	30.3	14.3	0.4	3.3

MK33

Input: 24V DC
 Max. Push Load: 6000N
 Typical Speed at No Load: 8.2mm/s
 Stroke: 50~300mm
 Duty Cycle: 10%

Min. Installation Dimension: 125mm+Stroke
Compliant with CE, EMC directive 2014/30/EU
Push only (pullable inner tube)
Option:
 Hall effect sensor
 With direct-cut cable to work without control box



Model No.	Max. Push Load (N)	Typical Speed (mm/s)		Typical Current (A)	
		No Load	Full Load	No Load	Full Load
MK33-24DA4-XXX.XXX-X1-XX0X	6000	4.2	2.9	0.8	3.4
MK33-24DA8-XXX.XXX-X1-XX0X	3000	8.2	5.5	0.8	2.8

Linear Actuator

FD60



Input: 12 / 24V DC
Max. Push Load: 6000N
Max. Pull Load: 4000N
Typical Speed at No Load: 33.3mm/s
Stroke: 50~300mm
Duty Cycle: 10%

Min. Installation Dimension: 160mm+Stroke
Certificate: CE, EMC directive 2014/30/EU, UL962
Option:
 Hall effect sensor
 Mechanical push only extension tube
 Mechanical brake
 With direct-cut cable to work without control box



Model No.	Max. Push Load (N)	Max. Pull Load (N)	Self-locking ability (N)	Typical Speed (mm/s)		Typical Current (A)			
				No Load	Full Load	No Load		Full Load	
						12V	24V	12V	24V
FD60-XX-A4-XXX.XXX	6000	4000	5000	4.2	2.9	0.8	0.6	5.4	2.7
FD60-XX-F4-XXX.XXX	5000	4000	5000	5.5	4.4	0.8	0.6	5.6	2.8
FD60-XX-A6-XXX.XXX	4000	4000	2500	6.2	3.8	0.4	0.6	6.0	3.0
FD60-XX-A8-XXX.XXX	3000	3000	2000	8.3	5.0	0.6	0.6	5.4	2.7
FD60-XX-F8-XXX.XXX	3000	3000	2000	11.0	8.2	1.0	0.6	5.6	2.9
FD60-XX-AG-XXX.XXX	1500	1500	700	16.6	12.2	0.4	0.6	5.6	2.8
FD60-XX-KG-XXX.XXX	750	750	0	33.3	23.5	0.4	0.6	5.6	2.8

FD61



Input: 12 / 24V DC
Max. Push Load: 6000N
Max. Pull Load: 4000N
Typical Speed at No Load: 33.3mm/s
Stroke: 50~300mm
Duty Cycle: 10%

Min. Installation Dimension: 150mm+Stroke
Certificate: CE, EMC directive 2014/30/EU, UL962
Option:
 Hall effect sensor
 Mechanical push only extension tube
 Mechanical brake
 With direct-cut cable to work without control box



Model No.	Max. Push Load (N)	Max. Pull Load (N)	Self-locking ability (N)	Typical Speed (mm/s)		Typical Current (A)			
				No Load	Full Load	No Load		Full Load	
						12V	24V	12V	24V
FD61-XX-A4-XXX.XXX	6000	4000	5000	4.2	2.9	0.8	0.4	5.4	2.7
FD61-XX-A6-XXX.XXX	4000	4000	2500	6.2	3.8	0.8	0.4	6.0	3.0
FD61-XX-A8-XXX.XXX	3000	3000	2000	8.3	5.0	0.8	0.4	5.4	2.7
FD61-XX-AG-XXX.XXX	1500	1500	700	16.6	12.2	0.8	0.4	5.6	2.8
FD61-XX-KG-XXX.XXX	750	750	0	33.3	23.5	0.8	0.4	5.2	2.7

GD70

Input: 24V DC

Max. Push Load: 7000N

Max. Pull Load: 5000N

Typical Speed at No Load: 7.7mm/s

Stroke: 50~300mm

Duty Cycle: 10%

Min. Installation Dimension: 150mm+Stroke

Certificate: CE, EMC directive 2014/30/EU, UL962

Option:

Hall effect sensor

Mechanical push only extension tube

Mechanical brake



Model No.	Max. Push Load (N)	Max. Pull Load (N)	Self-locking ability (N)	Typical Speed (mm/s)		Typical Current (A)	
				No Load	Full Load	No Load	Full Load
GD70-24-A4-XXX.XXX	7000	5000	5000	3.9	2.9	0.3	2.8
GD70-24-A6-XXX.XXX	5000	4000	2500	5.8	4.2	0.3	2.8
GD70-24-A8-XXX.XXX	4000	3500	2000	7.7	5.7	0.3	3.2

Linear Actuator

BD21



Input: 24V DC
Max. Push Load: 2000N
Max. Pull Load: 2000N
Typical Speed at No Load: 52mm/s
Stroke: ≤333mm
Duty Cycle: 10%

Retracted Length: ≥130mm
Certificate: CE, EMC directive 2014/30/EU, UL962
With direct-cut cable to work without control box
Option:
 Hall effect sensor
 Cable outlet from front or rear end
 There are 2 types of plastic unts can be selected



Model No.	Max. Push/Pull Load (N)	Typical Speed (mm/s)		Typical Current (A)	
		No Load	Full Load	No Load	Full Load
BD21-X0-24-HC-XXX.XXX-XX	1500	52	42	0.5	2.5
BD21-X0-24-K3-XXX.XXX-XX	2000	8.3	4.7	0.3	2.5

BD23



Input: 24V DC
Max. Push Load: 1500N
Max. Pull Load: 1500N
Typical Speed at No Load: 40mm/s
Stroke: 40~230mm
Duty Cycle: 10%

Retracted Length: ≥133mm
Certificate: CE, EMC directive 2014/30/EU
With direct-cut cable to work without control box
Option:
 Cable outlet from front or rear end
 There are 3 types of plastic unts can be selected

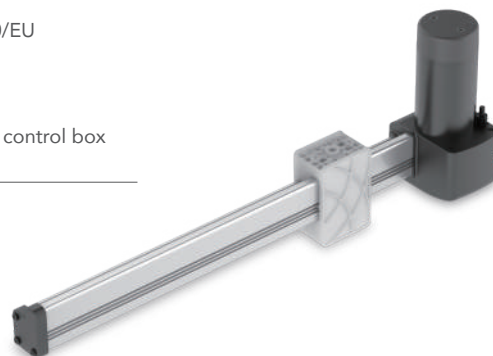


Model No.	Max. Push Load (N)	Max. Pull Load (N)	Typical Speed (mm/s)		Typical Current (A)	
			No Load	Full Load	No Load	Full Load
BD23-24-N4-XXX.XXX-X-X	1500	1000	25	23	0.6	2.3
BD23-24-W6-XXX.XXX-X-X	1500	1500	40	33	0.6	4.0

BD61

Input: 12 / 24V DC
 Max. Push Load: 6000N
 Max. Pull Load: 4000N
 Typical Speed at No Load: 33.3mm/s
 Stroke: 100~1000mm
 Duty Cycle: 10%

Retracted Length: ≥ 127 mm
 Certificate: CE, EMC directive 2014/30/EU
 Option:
 Hall effect sensor
 Mechanical brake
 With direct-cut cable to work without control box

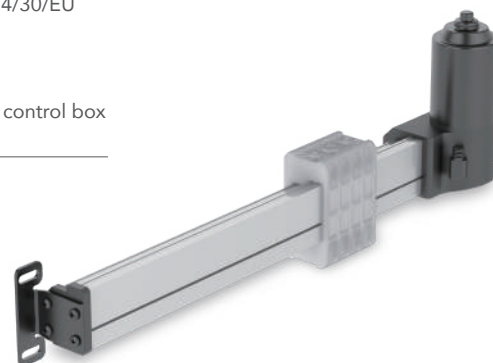


Model No.	Max. Push Load (N)	Max. Pull Load (N)	Self-locking ability (N)	Typical Speed (mm/s)		Typical Current (A)			
				No Load	Full Load	No Load		Full Load	
						12V	24V	12V	24V
BD61-XX-A4-XXX.XXX	6000	4000	5000	4.2	2.9	0.8	0.6	5.4	2.7
BD61-XX-F4-XXX.XXX	5000	4000	5000	5.5	4.4	0.8	0.6	5.6	2.8
BD61-XX-A6-XXX.XXX	4000	4000	2500	6.2	3.8	0.4	0.6	6.0	3.0
BD61-XX-A8-XXX.XXX	3000	3000	2000	8.3	5.0	0.6	0.6	5.4	2.7
BD61-XX-F8-XXX.XXX	3000	3000	2000	11.0	8.2	1.0	0.6	5.8	2.9
BD61-XX-AG-XXX.XXX	1500	1500	700	16.6	12.2	0.4	0.6	5.6	2.8
BD61-XX-KG-XXX.XXX	750	750	0	33.3	23.5	0.4	0.6	5.2	2.7

BD62

Input: 24V DC
 Max. Push Load: 3000N
 Max. Pull Load: 3000N
 Typical Speed at No Load: 6.3mm/s
 Stroke: 100~1000mm
 Duty Cycle: 10%

Retracted Length: ≥ 142 mm
 Compliant with CE, EMC directive 2014/30/EU
 Option:
 Hall effect sensor
 Mechanical brake
 With direct-cut cable to work without control box



Model No.	Max. Push Load (N)	Max. Pull Load (N)	Self-locking ability (N)	Typical Speed (mm/s)		Typical Current (A)	
				No Load	Full Load	No Load	Full Load
BD62-XX-A6-XXX.XXX	3000	3000	3000	6.3	3.8	0.3	3.5

Linear Actuator

MK45



Input: 24V DC
Max. Push Load: 1000N
Max. Pull Load: 1000N
Typical Speed at No Load: 5.0mm/s
Stroke: 50 / 100 / 150 / 200 / 250 / 300mm
Duty Cycle: 10%

IP Level: IP65
Min. Installation Dimension: 245mm+Stroke
Compliant with CE, EMC directive 2014/30/EU
Option: MB22 mounting bracket



Model No.	Max. Push/Pull Load (N)	Gear Ratio	Typical Speed (mm/s)		Typical Current (A)	
			No Load	Full Load	No Load	Full Load
MK45	1000	57:1	5.0	3.5	0.15	0.7

LD10



Input: 12 / 24V DC
Max. Push Load: 1000N
Max. Pull Load: 1000N
Typical Speed at No Load: 18.0mm/s
Stroke: 50~300mm
Duty Cycle: 10%

Min. Installation Dimension: 256mm+Stroke
Certificate: CE, EMC directive 2014/30/EU



Model No.	Max. Push/Pull Load (N)	Gear Ratio	Typical Speed (mm/s)		Typical Current (A)			
			No Load	Full Load	No Load		Full Load	
					12V	24V	12V	24V
LD10-XX-A6-16-XXX.XXX-CXX	1000	16:1	10	7	4.2	3.1	5.3	3.7
LD10-XX-A8-16-XXX.XXX-CXX	800	16:1	13	8	4.2	3.1	5.2	3.6
LD10-XX-AC-16-XXX.XXX-CXX	500	16:1	18	12	4.2	3.1	4.9	3.4

LD12

Input: 12 / 24V DC
Max. Push Load: 1500N
Max. Pull Load: 1500N
Max. Static Load: 1800N
Typical Speed at No Load: 17.4mm/s
Stroke: 50 / 100 / 150 / 200 / 250 /
 300 / 350 / 400mm
Duty Cycle: 10%

IP Level: IP66 / IP69K
Min. Installation Dimension: 183mm+Stroke
Certificate: CE, EMC directive 2014/30/EU
Material: All stainless steel SUS304 /
 Black coating steel case
Option:
 Hall effect sensor
 MB22 mounting bracket



Model No.	Max. Push/Pull Load (N)	Gear Ratio	Typical Speed (mm/s)		Typical Current (A)			
			No Load	Full Load	No Load		Full Load	
					12V	24V	12V	24V
LD12-XX19-M2-XXX.XXX	600	19:1	17.4	11.7	0.5	0.25	3.6	1.8
LD12-XX27-M2-XXX.XXX	1000	27:1	12.3	8.0	0.5	0.25	3.6	1.8
LD12-XX43-M2-XXX.XXX	1500	43:1	7.5	5.0	0.5	0.25	3.6	1.8
LD12-2457-K2-XXX.XXX	1500	57:1	3.5	2.3	N/A	0.2	N/A	0.8

LD2

Input: 24V DC
Max. Push Load: 800N
Max. Pull Load: 800N
Typical Speed at No Load: 18.0mm/s
Stroke: 50 / 100 / 150 / 200 / 250 / 300mm
Duty Cycle: 10%

IP Level: IP43 / IP54
Min. Installation Dimension: 109mm+Stroke
Certificate: CE, EMC directive 2014/30/EU
Option:
 C15 clamp
 MB22 mounting bracket



Model No.	Max. Push/Pull Load (N)	Gear Ratio	Typical Speed (mm/s)		Typical Current (A)		Noise Level (dB)
			No Load	Full Load	No Load	Full Load	
LD2-24-30-E6-XXX-CXX	800	30:1	9.3	6.5	0.13	0.8	≤55
LD2-24-30-K6-XXX-CXX	800	30:1	18.0	14.1	0.4	1.6	≤70

Linear Actuator

LD3



Input: 12 / 24V DC
Max. Push Load: 1000N
Max. Pull Load: 1000N
Max. Static Load: 2500N
Typical Speed at No Load: 43.9mm/s
Stroke: 50 / 100 / 150 / 200 / 250 / 300mm
Duty Cycle: 25%

IP Level: IP54 / IP65
Min. Installation Dimension: 108mm+Stroke
Certificate: CE, EMC directive 2014/30/EU (for LD3 only)
 EN60601 (for LD3M only)

Option:
 Hall effect sensor
 Potentiometer
 C15 clamp
 MB22 mounting bracket
 Quiet version (LD3Q)
 Medical version (LD3M)



WITH HALL EFFECT SENSOR

WITH POTENTIOMETER

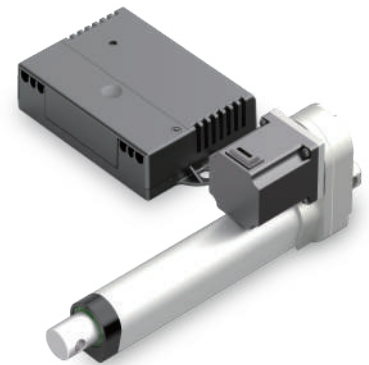
Model No.	Max. Push/Pull Load (N)	Self-locking ability (N)	Typical Speed (mm/s)		Typical Current (A)				Noise Level (dB)
			No Load	Full Load	No Load		Full Load		
					12V	24V	12V	24V	
LD3-XX-05-K3-XXX	150	2500	43.9	36.5	0.6	1.2	1.6	3.2	≤ 70
LD3-XX-10-K3-XXX	250	2500	27.6	23.5	0.6	1.2	1.6	3.2	≤ 70
LD3-XX-20-K3-XXX	500	2500	14.6	12.3	0.6	1.2	1.6	3.2	≤ 70
LD3-XX-30-K3-XXX	800	2500	9.5	7.5	0.6	1.2	1.6	3.2	≤ 70
LD3-XX-40-K3-XXX	1000	2500	7.0	5.5	0.6	1.2	1.6	3.2	≤ 70

LD3L



Input: 24~33V DC
Max. Push Load: 1000N
Max. Pull Load: 1000N
Typical Speed at No Load: 20.7mm/s
Stroke: 100 / 150 / 200 / 250 / 300mm
Duty Cycle: 80%

Min. Installation Dimension: Stroke x 1.02+107mm
Compliant with CE, EMC directive 2014/30/EU
Option:
 C15 clamp
 MB22 mounting bracket



Model No.	Max. Push/Pull Load (N)	Gear Ratio	Typical Speed (mm/s)		Typical Current (A)	
			No Load	Full Load	No Load	Full Load
LD3L-2433-10-XXX-XXX00XX	250	10:1	20.7	17.5	0.4	1.3
LD3L-2433-40-XXX-XXX00XX	1000	40:1	5.7	5.1	0.3	1.3

LD36

Input: 12 / 24V DC
 Max. Push Load: 1000N
 Max. Pull Load: 1000N
 Typical Speed at No Load: 43.9mm/s
 Stroke: 50 / 100 / 150 / 200 / 250 / 300mm
 Duty Cycle: 20%

IP Level: IP66 / IP69K
 Min. Installation Dimension: 108mm+Stroke
 Certificate: CE, EMC directive 2014/30/EU
 Option:
 Hall effect sensor
 Potentiometer
 MB22 mounting bracket



Model No.	Max. Push/Pull Load (N)	Self-locking ability (N)	Typical Speed (mm/s)		Typical Current (A)			
			No Load	Full Load	No Load		Full Load	
					12V	24V	12V	24V
LD36-XX-05-XXX-XXXXX	150	250	43.9	30.8	1.0	0.5	2.4	1.2
LD36-XX-10-XXX-XXXXX	250	340	27.6	16.8	1.0	0.5	2.4	1.2
LD36-XX-20-XXX-XXXXX	500	680	14.6	9.5	1.0	0.6	2.4	1.2
LD36-XX-30-XXX-XXXXX	800	1020	9.5	6.3	1.0	0.5	2.4	1.2
LD36-XX-40-XXX-XXXXX	1000	1530	7.0	4.6	1.0	0.5	2.4	1.2

LD20

Input: 12 / 24V DC
 Max. Push Load: 2500N
 Max. Pull Load: 2500N
 Typical Speed at No Load: 27.0mm/s
 Stroke: 100 / 150 / 200 / 250 / 300mm
 Duty Cycle: 25%

IP Level: IP65
 Min. Installation Dimension: 105mm+Stroke
 Certificate: CE, EMC directive 2014/30/EU, EN60601
 Option:
 Hall effect sensor
 Potentiometer
 MB22 mounting bracket



Model No.	Max. Push/Pull Load (N)	Self-locking ability (N)	Typical Speed (mm/s)				Typical Current (A)			
			No Load		Full Load		No Load		Full Load	
			12V	24V	12V	24V	12V	24V	12V	24V
LD20-XX-10-G4-XXX	500	1500	26.8	27.0	18.6	18.7	1.3	0.6	4.4	2.4
LD20-XX-20-G4-XXX	1000	4500	14.7	15.1	10.4	10.7	1.1	0.5	4.6	2.3
LD20-XX-30-G4-XXX	1500	4500	9.9	10.3	6.8	7.2	1.0	0.6	4.3	2.3
LD20-XX-40-G4-XXX	2000	4500	7.4	7.6	5.1	5.7	1.0	0.6	4.5	2.0
LD20-XX-50-G4-XXX	2500	4500	6.2	6.1	4.4	4.4	0.9	0.5	4.1	2.2

Linear Actuator

LD40



Input: 12 / 24V DC
Max. Dynamic Load: 3000N (ACME)
 4000N (Ball Screw)
Max. Static Load: 4000N (ACME)
 6000N (Ball Screw)
Typical Speed at No Load: 20.5mm/s
Stroke: 100 / 150 / 200 / 250 / 300 /
 350 / 400mm
Duty Cycle: 10%

IP Level: IP54
Min. Installation Dimension: 153mm+Stroke
Certificate: CE, EMC directive 2014/30/EU
ACME type or Ball Screw type
Friction Clutch: Only for abnormal condition
Option:
 Hall effect sensor
 Anodized black or Aluminum gray outer tube
 External reed sensor (NC type)
 Motor orientation



Model No.	Max. Push/ Pull Load (N)	Gear Ratio	Typical Speed (mm/s)		Typical Current (A)			
			No Load	Full Load	No Load		Full Load	
					12V	24V	12V	24V
LD40-XX-25F4B-XXX.XXX-11-XX0XX	4000	25:1	10.5	8.0	2.0	1.0	10.5	5.3
LD40-XX-12F4B-XXX.XXX-11-XX0XX	2000	12.5:1	20.5	16.3	1.9	1.0	11.3	5.6
LD40-XX-25F4A-XXX.XXX-11-XX0XX	3000	25:1	9.5	6.2	2.5	1.3	15.5	7.3

LD60



Input: 24V DC
Max. Push Load: 6000N
Max. Pull Load: 6000N
Typical Speed at No Load: 8.4mm/s
Stroke: 100~400mm
Duty Cycle: 10%

Min. Installation Dimension: 190mm+Stroke
Compliant with CE, EMC directive 2014/30/EU, EN60601
Aluminum alloy outer tube and gearbox
Option:
 Black color outer tube and gearbox
 Bare screw nut



ALUMINUM ALLOY



ANODIZE BLACK



WITHOUT INNER&OUTER TUBES

Model No.	Max. Push/ Pull Load (N)	Typical Speed (mm/s)		Typical Current (A)	
		No Load	Full Load	No Load	Full Load
LD60-24K4-XXX.XXX-XX000X	6000	5.5	3.9	0.4	5.1
LD60-24K6-XXX.XXX-XX000X	6000	8.4	4.9	0.6	7.0

MD10

Input: 24V DC
Max. Push Load: 1000N
Max. Pull Load: 1000N
Typical Speed at No Load: 36mm/s
Stroke: 50~300mm
Duty Cycle: 10%

IP Level: IPX5
Min. Installation Dimension: 115mm+Stroke
Certificate: CE, EN60601
Option:
 Hall effect sensor
 Mechanical push only extension tube
 C15 clamp
 MB22 mounting bracket



Model No.	Max. Push/ Pull Load (N)	Typical Speed (mm/s)		Typical Current (A)		Noise Level (dB)
		No Load	Full Load	No Load	Full Load	
MD10-24F4-XXX.XXX-XXXXX0X	1000	5.1	2.8	0.8	1.1	≤ 48
MD10-24R4-XXX.XXX-XXXXX0X	1000	7.2	4.5	1.0	1.8	≤ 50
MD10-24F8-XXX.XXX-XXXXX0X	750	10.1	4.3	0.8	1.4	≤ 48
MD10-24R8-XXX.XXX-XXXXX0X	750	14.2	8.4	1.0	2.1	≤ 50
MD10-24FC-XXX.XXX-XXXXX0X	500	15.1	7.4	0.8	1.3	≤ 48
MD10-24L8-XXX.XXX-XXXXX0X	500	18.6	14.8	1.2	2.0	≤ 52
MD10-24RC-XXX.XXX-XXXXX0X	500	21.6	13.9	1.0	1.8	≤ 50
MD10-24LC-XXX.XXX-XXXXX0X	400	27.5	20.0	1.2	2.1	≤ 52
MD10-24LG-XXX.XXX-XXXXX0X	250	36.0	29.3	1.2	1.9	≤ 52

MD21

Input: 24V DC
Max. Push Load: 2000N
Max. Pull Load: 2000N
Typical Speed at No Load: 23.6mm/s
Stroke: 50~400mm
Duty Cycle: 10%

IP Level: IPX5
Min. Installation Dimension: 135mm+Stroke
Certificate: CE, EMC directive 2014/30/EU,
 EN60601
Option:
 Hall effect sensor
 C15 clamp
 MB22 mounting bracket



Model No.	Max. Push/Pull Load (N)	Typical Speed (mm/s)		Typical Current (A)	
		No Load	Full Load	No Load	Full Load
MD21-24N4-XXX.XXX-XXX00XX	2000	7.5	5.3	1.1	3.0
MD21-24N6-XXX.XXX-XXX00XX	1500	11.0	7.6	1.1	3.2
MD21-24NC-XXX.XXX-XXX00XX	1000	23.6	15.7	1.1	3.2

Linear Actuator

MK32



Input: 24V DC
Max. Push Load: 3500N
Max. Pull Load: 3500N
Typical Speed at No Load: 28.0mm/s
Stroke: 50~600mm
Duty Cycle: 10%

IP Level: IP66
Min. Installation Dimension: 114mm+Stroke
Compliant with CE, EMC directive 2014/30/EU, EN60601
Option:
Hall effect sensor
Mechanical push only extension tube
Safety nut (in push direction)



Model No.	Max. Push/Pull Load (N)	Typical Speed (mm/s)		Typical Current (A)	
		No Load	Full Load	No Load	Full Load
MK32-24T4-XXX.XXX	3500	11.5	6.0	1.1	6.5
MK32-24N8-XXX.XXX	2500	20.0	7.8	1.0	6.2
MK32-24NC-XXX.XXX	1500	28.0	13.8	1.1	5.5

MD50

Input: 24V DC
 Max. Push Load: 3500N
 Max. Pull Load: 2000N
 Typical Speed at No Load: 11.4mm/s
 Stroke: 50~600mm
 Duty Cycle: 10%

Min. Installation Dimension: 137mm+Stroke
 Certificate: CE, EN60601
 Option: Mechanical push only extension tube



Model No.	Max. Push Load (N)	Max. Pull Load (N)	Typical Speed (mm/s)		Typical Current (A)	
			No Load	Full Load	No Load	Full Load
MD50-24-A3-XXX.XXX-CXX-XXXX	3500	2000	5.0	3.8	0.8	3.8
MD50-24-F3-XXX.XXX-CXX-XXXX	2000	2000	11.4	9.0	0.9	3.5

MD51

Input: 24V DC
 Max. Push Load: 3500N
 Max. Pull Load: 2000N
 Typical Speed at No Load: 11.4mm/s
 Stroke: 100~600mm
 Duty Cycle: 10%

IP Level: IP66
 Min. Installation Dimension: 141mm+Stroke
 Certificate: CE, EN60601
 Option: Mechanical push only extension tube



Model No.	Max. Push Load (N)	Max. Pull Load (N)	Typical Speed (mm/s)		Typical Current (A)	
			No Load	Full Load	No Load	Full Load
MD51-24-A3-XXX.XXX-CXX-XXXX	3500	2000	5.0	3.8	0.8	3.8
MD51-24-F3-XXX.XXX-CXX-XXXX	2000	2000	11.4	9.0	0.9	3.5

Linear Actuator

MD52



Input: 24V DC
Max. Push Load: 1000N
Max. Pull Load: 1000N
Typical Speed at No Load: 25.0mm/s
Stroke: 100~300mm
Duty Cycle: 10%

IP Level: IP66 / IP69K
Min. Installation Dimension: 156mm+Stroke
Certificate: CE, EMC directive 2014/30/EU
Option:
 Potentiometer
 Bellow protection (100mm stroke only)



BELLOW PROTECTION

Model No.	Max. Push Load (N)	Max. Pull Load (N)	Typical Speed (mm/s)		Typical Current (A)	
			No Load	Full Load	No Load	Full Load
MD52-24-M6-XXX.XXX-X-X	1000	1000	25.0	18.5	1.5	5.0

MD53



Input: 24 / 36V DC
Max. Push Load: 3500N
Max. Pull Load: 2000N
Typical Speed at No Load: 10.5mm/s
Stroke: 100~300mm
Duty Cycle: 10%

Min. Installation Dimension: 167mm+Stroke
Option: Potentiometer



Model No.	Max. Push Load (N)	Max. Pull Load (N)	Input Voltage (V DC)	Typical Speed (mm/s)		Typical Current (A)	
				No Load	Full Load	No Load	Full Load
MD53-24-XXX.XXX-CXX	3500	2000	24	10.5	8.5	1.0	4.5
MD53-36-XXX.XXX-CXX	3500	2000	36	10.5	8.5	0.8	3.5

MD56



Input: 24V DC
 Max. Push Load: 5000N
 Max. Pull Load: 3500N
 Typical Speed at No Load: 43mm/s
 Stroke: 50~400mm
 Duty Cycle: 10%

Min. Installation Dimension: 156mm+Stroke
 Certificate: CE, EN60601
 Motor orientation can be adjusted in every 30°
 Option:
 Hall effect sensor
 Potentiometer
 Reed sensor
 IPX6 waterproof case



WATERPROOF CASE

Model No.	Max. Push Load (N)	Max. Pull Load (N)	Typical Speed (mm/s)		Typical Current (A)	
			No Load	Full Load	No Load	Full Load
MD56-X-24R3-XXX.XXX-XXXX0XX	5000	3500	5	4	1.0	4.0
MD56-X-24W6-XXX.XXX-XXXX0XX	2000	2000	18	15	1.1	4.6
MD56-X-24N9-XXX.XXX-XXXX0XX	1000	1000	43	30	1.5	5.0

MD57



Input: 24V DC
 Max. Push Load: 4000N
 Max. Pull Load: 4000N
 Typical Speed at No Load: 12.6mm/s
 Stroke: 50~300mm
 Duty Cycle: 10%

Min. Installation Dimension: 143mm+Stroke
 Certificate: CE, EN60601
 Motor orientation can be adjusted in whole 360°
 Option:
 Hall effect sensor
 Potentiometer
 Preset cam type limit switches
 IPX6 waterproof case
 12V high power motor



WATERPROOF CASE



12V HIGH POWER MOTOR



WITH LIMIT SWITCH OR POSITIONING FEEDBACK

Model No.	Input Voltage (V DC)	Max. Push/Pull Load (N)	Typical Speed (mm/s)		Typical Current (A)	
			No Load	Full Load	No Load	Full Load
MD57-X-24K3-XXX.XXX-XXXXXXX	24	4000	4.8	3.5	0.7	3.5
MD57-X-24K4-XXX.XXX-XXXXXXX	24	3200	6.4	4.8	0.7	3.4
MD57-X-24K6-XXX.XXX-XXXXXXX	24	2700	9.4	7.0	0.7	3.8
MD57-X-24K8-XXX.XXX-XXXXXXX	24	2300	12.6	8.9	0.8	4.0
MD57-X-12W4-XXX.XXX-XXXXXXX	12	4000	12.0	9.5	3.0	16.0

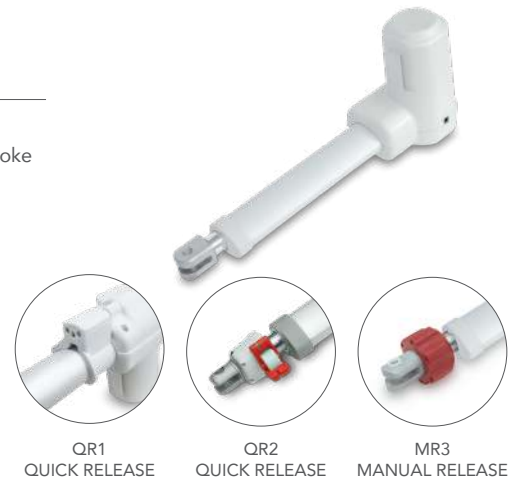
Linear Actuator

MD60



Input: 24V DC
Max. Push Load: 6000N
Max. Pull Load: 4000N
Typical Speed at No Load: 23.0mm/s
Stroke: 50~400mm
Duty Cycle: 10%

IP Level: IPX4 / IPX6
Min. Installation Dimension: 155mm+Stroke
Certificate: CE, EN60601, RoHS
Option:
 Hall effect sensor
 Mechanical push only extension tube
 Safety nut (in push direction)
 QR1 quick release
 QR2 quick release
 MR3 manual release



QR1 QUICK RELEASE QR2 QUICK RELEASE MR3 MANUAL RELEASE

Model No.	Max. Push Load (N)	Max. Pull Load (N)	Typical Speed (mm/s)		Typical Current (A)	
			No Load	Full Load	No Load	Full Load
MD60-24-A3-XXX.XXX-CXX	6000	4000	2.9	2.1	0.5	3.0
MD60-24-A4-XXX.XXX-CXX	6000	4000	3.8	2.5	0.5	3.5
MD60-24-A6-XXX.XXX-CXX	6000	4000	5.8	3.6	0.5	4.0
MD60-24-A8-XXX.XXX-CXX	6000	4000	7.6	5.0	0.5	4.5
MD60-24-AC-XXX.XXX-CXX	3000	3000	11.5	8.2	0.5	3.5
MD60-24-AG-XXX.XXX-CXX	1500	1500	15.3	12.0	0.5	3.0
MD60-24-K3-XXX.XXX-CXX	6000	4000	5.8	3.8	0.5	3.5
MD60-24-K4-XXX.XXX-CXX	6000	4000	7.5	4.5	0.5	4.5
MD60-24-K6-XXX.XXX-CXX	3000	3000	11.5	6.9	0.5	3.5
MD60-24-K8-XXX.XXX-CXX	3000	3000	15.3	10.0	0.5	4.0
MD60-24-KC-XXX.XXX-CXX	2000	2000	23.0	14.7	0.5	4.0
MD60-24-A8-XXX.XXX-CXX-QR1	3000	3000	7.6	6.3	0.5	2.5
MD60-24-AC-XXX.XXX-CXX-QR1	2000	2000	11.5	9.3	0.5	2.5

MD66



Input: 24V DC
Max. Push Load: 6000N
Max. Pull Load: 4000N
Typical Speed at No Load: 16.6mm/s
Stroke: 50~300mm
Duty Cycle: 10%

IP Level: IPX5
Min. Installation Dimension: 160mm+Stroke
Certificate: CE, EN60601
Option:
 Hall effect sensor
 Mechanical push only extension tube
 Safety nut (in push direction)
 Mechanical brake
 Electric CPR function



Model No.	Max. Push Load (N)	Max. Pull Load (N)	Self-locking ability (N)	Typical Speed (mm/s)		Typical Current (A)	
				No Load	Full Load	No Load	Full Load
MD66-24-A4-XXX.XXX	6000	4000	5000	4.2	2.9	0.6	2.7
MD66-24-A6-XXX.XXX	4000	4000	2500	6.2	3.8	0.6	3.0
MD66-24-A8-XXX.XXX	3000	3000	2000	8.3	5.0	0.6	2.7
MD66-24-AG-XXX.XXX	1500	1500	700	16.6	12.2	0.6	2.8

MD7

Input: 12 / 24V DC
 Max. Push Load: 6000N
 Max. Pull Load: 4000N
 Typical Speed at No Load: 16.6mm/s
 Stroke: 50~300mm
 Duty Cycle: 10%

IP Level: IP54
 Min. Installation Dimension: 160mm+Stroke
 Certificate: CE, EN60601
 Option:
 Hall effect sensor
 Mechanical push only extension tube
 Safety nut (in push direction)
 Mechanical brake



Model No.	Max. Push Load (N)	Max. Pull Load (N)	Self-locking ability (N)	Typical Speed (mm/s)		Typical Current (A)			
				No Load	Full Load	No Load		Full Load	
						12V	24V	12V	24V
MD7-XX-A4-XXX.XXX	6000	4000	5000	4.2	2.9	1.2	0.6	5.4	2.7
MD7-XX-A6-XXX.XXX	4000	4000	2500	6.2	3.8	1.2	0.6	6.0	3.0
MD7-XX-A8-XXX.XXX	3000	3000	2000	8.3	5.0	1.2	0.6	5.4	2.7
MD7-XX-AG-XXX.XXX	1500	1500	700	16.6	12.2	1.2	0.6	5.6	2.8
MD7-XX-F4-XXX.XXX	5000	4000	5000	5.5	4.4	1.2	0.6	5.6	2.8
MD7-XX-F8-XXX.XXX	3000	3000	2000	11.0	8.2	1.2	0.6	5.8	2.9

MK31-QR

Input: 24V DC
 Max. Push Load: 4000N
 Max. Pull Load: 2000N
 Typical Speed at No Load: 6.8mm/s
 Stroke: 50~300mm
 Duty Cycle: 10%

IP Level: IPX6
 Min. Installation Dimension: 170mm+Stroke
 Quick Release function
 Compliant with CE, EN60601
 Option:
 Mechanical quick release
 Safety nut (in push direction)



Model No.	Max. Push Load (N)	Max. Pull Load (N)	Typical Speed (mm/s)		Typical Current (A)	
			No Load	Full Load	No Load	Full Load
MK31-QR-24A7-XXX.XXX-X1XXX0X	4000	2000	6.8	4.9	1.0	3.5

Linear Actuator

MD80



Input: 24V DC
Max. Push Load: 8000N
Max. Pull Load: 6000N
Typical Speed at No Load: 16.6mm/s
Stroke: 50~400mm
Duty Cycle: 10%

IP Level: IPX4 / IPX5
Min. Installation Dimension: 180mm+Stroke
Certificate: CE, EN60601, RoHS
Option:
 Mechanical push only extension tube
 Safety nut (in push direction)
 QR2 quick release
 MR3 manual release



MR3
MANUAL RELEASE



QR2
QUICK RELEASE

Model No.	Max. Push Load (N)	Max. Pull Load (N)	Typical Speed (mm/s)		Typical Current (A)	
			No Load	Full Load	No Load	Full Load
MD80-24DA4-XXX.XXX-XXX0XX	8000	6000	4.2	3.3	0.6	5.5
MD80-24DA6-XXX.XXX-XXX0XX	8000	6000	6.2	4.6	0.6	6.0
MD80-24DA8-XXX.XXX-XXX0XX	8000	6000	8.1	5.9	0.6	6.5
MD80-24DK8-XXX.XXX-XXX0XX	3000	3000	16.6	11.8	1.0	5.5

MD80M



Max. Push Load: 8000N
Max. Pull Load: 6000N
Typical Speed at No Load: 16.6mm/s
Input: 110 / 230V AC
Power Supply: 24V/8A toroidal transformer
Output Voltage: 24V DC
Number of Control: 1
Number of Additional Actuator: 2
Stroke: 50~400mm
Duty Cycle: 10%

IP Level: IPX4 / IPX5
Min. Installation Dimension: 180mm+Stroke
Certificate: CE, EN60601
Integrate with control unit and power supply
Option:
 Mechanical push only extension tube
 Safety nut (in push direction)



Model No.	Max. Push Load (N)	Max. Pull Load (N)	Typical Speed (mm/s)		Typical Current (A)	
			No Load	Full Load	No Load	Full Load
MD80M-24A4-XXX.XXX-XXX0XXX	8000	6000	4.2	3.3	0.6	5.0
MD80M-24A6-XXX.XXX-XXX0XXX	8000	6000	6.2	4.6	0.6	6.0
MD80M-24A8-XXX.XXX-XXX0XXX	8000	6000	8.1	5.9	0.6	6.7
MD80M-24K8-XXX.XXX-XXX0XXX	3000	3000	16.6	11.8	1.0	5.0

MD82**Input:** 24V DC**Max. Push Load:** 8000N**Max. Pull Load:** 6000N**Typical Speed at No Load:** 8.2mm/s**Stroke:** 50~400mm**Duty Cycle:** 10%**IP Level:** IPX4 / IPX6**Min. Installation Dimension:** 177mm+Stroke**Certificate:** CE, EN60601**Option:**

Hall effect sensor

Mechanical push only extension tube

Safety nut (in push direction)

MR3 manual release

MR3
MANUAL RELEASE

Model No.	Max. Push Load (N)	Max. Pull Load (N)	Typical Speed (mm/s)		Typical Current (A)	
			No Load	Full Load	No Load	Full Load
MD82-24DA4-XXX.XXX-XXXXX0XX	8000	6000	4.1	3.1	0.6	4.2
MD82-24DA6-XXX.XXX-XXXXX0XX	8000	6000	6.0	3.9	0.6	5.4
MD82-24DA8-XXX.XXX-XXXXX0XX	8000	6000	8.2	4.8	0.6	6.3

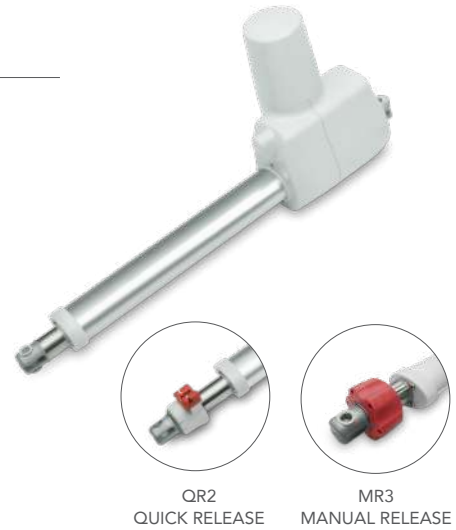
Linear Actuator

MD100



Input: 24V DC
Max. Push Load: 10000N
Max. Pull Load: 6000N
Typical Speed at No Load: 9.0mm/s
Stroke: 100~600mm
Duty Cycle: 10%

IP Level: IPX4 / IPX6
Min. Installation Dimension: 210mm+Stroke
Certificate: CE, EN60601, UL 60601
Option:
 Mechanical push only extension tube
 Safety nut (in push direction)
 QR2 quick release
 MR3 manual release



QR2 QUICK RELEASE MR3 MANUAL RELEASE

Model No.	Max. Push Load (N)	Max. Pull Load (N)	Typical Speed (mm/s)		Typical Current (A)	
			No Load	Full Load	No Load	Full Load
MD100-24DC-XXX.XXX-XXX0XXX	10000	6000	7.0	5.2	1.0	7.0
MD100-24FC-XXX.XXX-XXX0XXX	10000	6000	9.0	6.7	1.0	8.2

MD120



Input: 24V DC
Max. Push Load: 12000N
Max. Pull Load: 6000N
Typical Speed at No Load: 6.9mm/s
Stroke: 100~400mm
Duty Cycle: 10%

IP Level: IPX4 / IPX6
Min. Installation Dimension: 230mm+Stroke
Certificate: CE, EN60601
Option:
 Hall effect sensor
 Mechanical push only extension tube
 Electrical push only function
 MR3 manual release



MR3 MANUAL RELEASE

Model No.	Max. Push Load (N)	Max. Pull Load (N)	Typical Speed (mm/s)		Typical Current (A)	
			No Load	Full Load	No Load	Full Load
MD120-24E8-XXX.XXX-XXX0XXX	12000	6000	6.3	4.4	0.6	6.6
MD120-24F8-XXX.XXX-XXX0XXX	12000	6000	6.9	5.2	0.9	7.5

ID10



Input: 12 / 24 / 48V DC

Max. Rated Load: 3500N (ACME)
7000N (Ball Screw)

Max. Static Load: 4500N (ACME)
13600N (Ball Screw)

Typical Speed at No Load: 72.1mm/s

Stroke: 102 / 153 / 203 / 254 / 305 /
457 / 610mm

Duty Cycle: 25%

IP Level: IP54 / IP65

Min. Installation Dimension: 160mm+Stroke

Certificate: CE, EMC directive 2014/30/EU

ACME type or Ball Screw type

Overload protection by clutch

Option:

Hall effect sensor

Potentiometer

Preset limit switches

Manual drive socket

MB30 mounting bracket



WITH POTENTIOMETER

Model No.	Max. Push/Pull Load (N)	Typical Speed (mm/s)						Typical Current (A)					
		No Load			Full Load			No Load			Full Load		
		12V	24V	48V	12V	24V	48V	12V	24V	48V	12V	24V	48V
ID10-XX-10-A	1500	33.5	33.5	36.5	26.7	26.7	29.1	2.6	1.6	1.4	17.6	8.8	3.6
ID10-XX-20-A	2500	16.8	16.8	17.8	14.3	14.3	15.3	2.6	1.6	0.8	13.2	6.6	2.4
ID10-XX-40-A	3500	8.4	8.4	8.6	7.4	7.4	7.8	2.6	1.6	0.5	11.0	5.5	2.1
ID10-XX-05-B	2500	67.1	67.1	72.1	47.2	47.2	57.5	3.4	2.6	0.5	26.4	13.2	5.5
ID10-XX-10-B	3500	33.5	33.5	36.5	26.7	26.7	29.1	2.6	1.6	0.5	17.6	8.8	3.6
ID10-XX-20-B	4500	16.8	16.8	17.8	14.3	14.3	15.3	2.6	1.6	0.5	13.2	6.6	2.4
ID10-XX-30-B	6000	11.2	11.2	11.7	9.8	9.8	10.3	2.6	1.6	0.5	12.1	6.1	2.5
ID10-XX-40-B	7000	8.4	8.4	8.6	7.4	7.4	7.8	2.6	1.6	0.5	11.0	5.5	2.1

ID10BT



Input: 24V DC

Max. Rated Load: 1000N

Max. Static Load: 1500N

Typical Speed at No Load: 72mm/s

Stroke: 102 / 153 / 203 / 254 / 305 /
457mm

Duty Cycle: 25%

IP Level: IP54 / IP65

Min. Installation Dimension: 160mm+Stroke

Compliant with EMC directive 2014/30/EU

ACME type spindle



Model No.	Max. Push/Pull Load (N)	Typical Speed (mm/s)		Typical Current (A)	
		No Load	Full Load	No Load	Full Load
ID10BT	1000	72	53	1.8	10

Linear Actuator

ID10K



Input: 12 / 24V DC
Max. Rated Load: 7000N
Max. Static Load: 13600N
Typical Speed at No Load: 7mm/s
Stroke: 102 / 153 / 203 / 254 / 305 / 457 / 610mm
Duty Cycle: 10%

IP Level: IP65
Min. Installation Dimension: 160mm+Stroke
Compliant with EMC directive 2014/30/EU
ACME type spindle
Overload protection by clutch
Option:
 Hall effect sensor
 Potentiometer
 Preset limit switches
 MB30 mounting bracket



Model No.	Max. Push/Pull Load (N)	Gear Ratio	Typical Speed (mm/s)		Typical Current (A)			
			No Load	Full Load	No Load		Full Load	
			12V	24V	12V	24V	12V	24V
ID10K-XX-G4A-40-XXX	7000	40:1	7	5.5	3	1.5	15	7.5

ID10G



Input: 12 / 24V DC
Max. Rated Load: 9000N
Max. Static Load: 18000N
Typical Speed at No Load: 14mm/s
Stroke: 102 / 153 / 203 / 254 / 305 / 457 / 610mm
Duty Cycle: 10%

IP Level: IP65
Min. Installation Dimension: 200mm+Stroke
Compliant with EMC directive 2014/30/EU
ACME type spindle
Overload protection by clutch
Option:
 Hall effect sensor
 Potentiometer
 Preset limit switches
 MB30 mounting bracket



Model No.	Max. Push/Pull Load (N)	Gear Ratio	Typical Speed (mm/s)		Typical Current (A)			
			No Load	Full Load	No Load		Full Load	
			12V	24V	12V	24V	12V	24V
ID10G-XX-G8A-40-XXX	9000	40:1	14	10	1.6	0.8	22	11

ID10P

Input: 24V DC
 Max. Rated Load: 12500N
 Max. Static Load: 13600N
 Typical Speed at No Load: 20mm/s
 Stroke: 102 / 203 / 305mm
 Duty Cycle: 10%

IP Level: IP67 / IP69K
 Min. Installation Dimension: 398mm+Stroke
 Compliant with CE, EMC directive 2014/30/EU
 Ball Screw type
 Overload protection by clutch
 Option:
 Potentiometer
 MB30 mounting bracket



Model No.	Max. Push/Pull Load (N)	Typical Speed (mm/s)		Typical Current (A)	
		No Load	Full Load	No Load	Full Load
ID10P-2420B-XXX-XXX000X	9000	20	15.5	1.8	11.0
ID10P-2430B-XXX-XXX000X	12500	14	10.5	1.5	11.5

ID11

Input: 12 / 24 / 48V DC
 Max. Rated Load: 3500N (ACME)
 7000N (Ball Screw)
 Max. Static Load: 4500N (ACME)
 13600N (Ball Screw)
 Typical Speed at No Load: 36.5mm/s
 Stroke: 102 / 153 / 203 / 254 / 305 /
 457 / 610mm
 Duty Cycle: 25%

IP Level: IP54 / IP65
 Min. Installation Dimension: 217mm+Stroke
 Certificate: CE, EMC directive 2014/30/EU
 ACME type or Ball Screw type
 Overload protection by clutch
 Bottom cable outlet
 Option:
 Side cable outlet
 MB30 mounting bracket



Model No.	Max. Push/Pull Load (N)	Typical Speed (mm/s)						Typical Current (A)					
		No Load			Full Load			No Load			Full Load		
		12V	24V	48V	12V	24V	48V	12V	24V	48V	12V	24V	48V
ID11-XX-10-A-XXX	1500	33.5	33.5	36.5	26.7	26.7	29.1	2.6	1.6	1.4	17.6	8.8	3.6
ID11-XX-20-A-XXX	2500	16.8	16.8	17.8	14.3	14.3	15.3	2.6	1.6	0.8	13.2	6.6	2.4
ID11-XX-40-A-XXX	3500	8.4	8.4	8.6	7.4	7.4	7.8	2.6	1.6	0.5	11.0	5.5	2.1
ID11-XX-10-B-XXX	3500	33.5	33.5	36.5	26.7	26.7	29.1	2.6	1.6	0.5	17.6	8.8	3.6
ID11-XX-20-B-XXX	4500	16.8	16.8	17.8	14.3	14.3	15.3	2.6	1.6	0.5	13.2	6.6	2.4
ID11-XX-30-B-XXX	6000	11.2	11.2	11.7	9.8	9.8	10.3	2.6	1.6	0.5	12.1	6.1	2.5
ID11-XX-40-B-XXX	7000	8.4	8.4	8.6	7.4	7.4	7.8	2.6	1.6	0.5	11.0	5.5	2.1

Linear Actuator

ID12



Input: 12 / 24 / 48V DC
Max. Rated Load: 3500N (ACME)
 7000N (Ball Screw)
Max. Static Load: 4500N (ACME)
 13600N (Ball Screw)
Typical Speed at No Load: 72.1mm/s
Stroke: 100 / 150 / 200 / 300 / 450 /
 600mm
Duty Cycle: 25%

IP Level: IP66 / IP69K
Min. Installation Dimension: 166mm+Stroke
Certificate: CE, EMC directive 2014/30/EU
ACME type or Ball Screw type
Overload protection by clutch
Option:
 Hall effect sensor
 Potentiometer
 Preset limit switches
 External adjustable reed switch
 Manual drive socket
 MB30 mounting bracket



EXTERNAL ADJUSTABLE
 REED SWITCH

Model No.	Max. Push/Pull Load (N)	Typical Speed (mm/s)						Typical Current (A)					
		No Load			Full Load			No Load			Full Load		
		12V	24V	48V	12V	24V	48V	12V	24V	48V	12V	24V	48V
ID12-XX-10-A-XXX	1500	33.5	33.5	36.5	26.7	26.7	29.1	2.6	1.6	1.4	17.6	8.8	3.6
ID12-XX-20-A-XXX	2500	16.8	16.8	17.8	14.3	14.3	15.3	2.6	1.6	0.8	13.2	6.6	2.4
ID12-XX-40-A-XXX	3500	8.4	8.4	8.6	7.4	7.4	7.8	2.6	1.6	0.5	11.0	5.5	2.1
ID12-XX-05-B-XXX	2500	67.1	67.1	72.1	47.2	47.2	57.5	3.4	2.6	0.5	26.4	13.2	5.5
ID12-XX-10-B-XXX	3500	33.5	33.5	36.5	26.7	26.7	29.1	2.6	1.6	0.5	17.6	8.8	3.6
ID12-XX-20-B-XXX	4500	16.8	16.8	17.8	14.3	14.3	15.3	2.6	1.6	0.5	13.2	6.6	2.4
ID12-XX-30-B-XXX	6000	11.2	11.2	11.7	9.8	9.8	10.3	2.6	1.6	0.5	12.1	6.1	2.5
ID12-XX-40-B-XXX	7000	8.4	8.4	8.6	7.4	7.4	7.8	2.6	1.6	0.5	11.0	5.5	2.1

IA5



Input: 115 / 230V AC
Max. Push Load: 3500N (ACME)
 7000N (Ball Screw)
Max. Static Load: 4500N (ACME)
 13600N (Ball Screw)
Typical Speed at No Load: 52.8mm/s
Stroke: 102 / 153 / 203 / 254 / 305 /
 457 / 610mm
Duty Cycle: 25%

IP Level: IP54 / IP65
Min. Installation Dimension: 160mm+Stroke
Certificate: UL 1004-1, CE, EMC directive 2014/30/EU
ACME type or Ball Screw type
Overload protection by clutch
Option:
 Potentiometer
 Preset limit switches
 MB30 mounting bracket



WITH POTENTIOMETER

Model No.	Max. Push/Pull Load (N)	Typical Speed (mm/s)				Typical Current (A)			
		No Load		Full Load		No Load		Full Load	
		115V	230V	115V	230V	115V	230V	115V	230V
IA5-XXX-10-A-XXX	1500	26.5	21.8	22.9	17.5	2.8	1.8	3.1	1.8
IA5-XXX-20-A-XXX	2500	13.1	10.8	11.8	9.3	2.7	1.9	2.7	1.9
IA5-XXX-40-A-XXX	3500	6.6	5.4	6.0	4.9	2.7	1.9	2.7	1.9
IA5-XXX-05-B-XXX	2500	52.8	43.5	40.8	29.0	2.8	1.8	3.5	1.8
IA5-XXX-10-B-XXX	3500	26.5	21.8	22.9	17.5	2.8	1.8	3.1	1.8
IA5-XXX-20-B-XXX	4500	13.1	10.8	11.8	9.3	2.7	1.9	2.7	1.9
IA5-XXX-30-B-XXX	6000	8.7	7.2	7.9	6.3	2.7	1.9	2.7	1.9
IA5-XXX-40-B-XXX	7000	6.6	5.4	6.0	4.9	2.7	1.9	2.7	1.9

Please refer to the product data sheet for the definition of Model No.

MK35**SAE J1939 Can Bus**

Input: 24V DC
Max. Rated Load: 10000N
Max. Static Load: 18000N
Typical Speed at No Load: 40mm/s
Stroke: 100~1000mm
Duty Cycle: 15~25%
Operating Temperature: -40°C~+80°C

IP Level: IP66 (dynamic) / IP67, IP69K (static)
Min. Installation Dimension: 190mm+Stroke
Compliant with CE, EMC directive 2014/30/EU, RoHS
Ball Screw type
Manual drive capable
Built-in stroke limit switches
Operating voltage and temperature detection
Soft start / stop
Control option:
 Signal control + EoS
 Signal control + Potentiometer + EoS
 Signal control + Dual Hall effect sensors + EoS
 SAE J1939 CAN Bus protocol



Model No.	Gear Type	Max. Push/Pull Load (N)	Duty Cycle (%)	Typical Speed (mm/s)		Typical Current (A)			
				No Load	Full Load	No Load		Full Load	
						12V	24V	12V	24V
MK35-24G-10B-XXXX	10	2600	25	40	29	3.0	1.5	18	9
MK35-24G-15B-XXXX	15	4500	25	24	17	3.0	1.5	18	9
MK35-24G-20B-XXXX	20	6800	25	18	13	3.0	1.5	20	10
MK35-24G-30B-XXXX	30	10000	15	11	8	3.0	1.5	18	9

ID10S

Input: 12 / 24V DC
Max. Rated Load: 4500N (ACME)
 7000N (Ball Screw)
Max. Static Load: 13600N (ACME)
 17100N (Ball Screw)
Typical Speed at No Load: 5.5mm/s
Stroke: 450 / 600 / 900mm
Duty Cycle: 25%

IP Level: IP65
Min. Installation Dimension: 314mm+Stroke
Certificate: CE, EMC directive 2014/30/EU
ACME type or Ball Screw type
Overload protection by clutch
Option:
 Hall effect sensor
 Potentiometer
 Reed sensor
 Stainless steel extension tube
 Aluminum back cover



Model No.	Max. Dynamic Load (N)	Typical Speed (mm/s)		Typical Current (A)			
		No Load	Full Load	No Load		Full Load	
				12V	24V	12V	24V
ID10S-XX40E5BXXX-XXXXXXX	9000	5.5	4.4	1.8	0.9	7.2	3.6
ID10S-XX40E5AXXX-XXXXXXX	5500	5.5	4.4	1.8	0.9	7.8	3.9

Linear Actuator

ID16



Input: 24V DC
Rated Load: 5500N
Max. Static Load: 13600N
Typical Speed at No Load: 3.3mm/s
Stroke: 450 / 600 / 900mm
Duty Cycle: 10%

IP Level: IP65
Min. Installation Dimension: 363mm+Stroke
Certificate: CE, EMC directive 2014/30/EU
ACME type spindle
Option:
 Hall effect sensor
 Potentiometer
 Reed sensor



Model No.	Max. Push/Pull Load (N)	Typical Speed (mm/s)		Typical Current (A)	
		No Load	Full Load	No Load	Full Load
ID16-24D5AXXX-XXXX0XX	5500	3.3	2.6	0.5	2.3

ID18



Input: 24 / 36V DC
Rated Load: 9000N (ACME)
 12000N (Ball Screw)
Max. Static Load: 36000N
Typical Speed at No Load: 3.3mm/s
Stroke: 610 / 914 / 1219mm
Duty Cycle: 10%

IP Level: IP65
Min. Installation Dimension: 453mm+Stroke
ACME type or Ball Screw type
Customized clamp or trunnion
Certificate: CE, EMC directive 2014/30/EU
Option:
 Hall effect sensor
 Potentiometer
 Reed sensor



TRUNNION MOUNT

Model No.	Max. Push/Pull Load (N)	Input Voltage (V DC)	Typical Speed (mm/s)		Typical Current (A)	
			No Load	Full Load	No Load	Full Load
ID18-2458S3AXXX-XXXXXXX	9000	24	2.0	1.5	0.4	4.0
ID18-3658S3AXXX-XXXXXXX	9000	36	2.0	1.5	0.4	2.5
ID18-2458S5BXXX-XXXXXXX	12000	24	3.3	2.7	0.4	2.4
ID18-3658S5BXXX-XXXXXXX	12000	36	3.3	2.7	0.4	1.8

Please refer to the product data sheet for the definition of Model No.

SW10**Swing Gate Series - Actuator Type**

Max. Leaf Length: 1.5m
 Max. Leaf Weight: 100kg
 Input: 12V DC
 IP Level: IP44
 Duty Cycle: 20%
 Operating Temperature: -20°C~+60°C

**SW12****Swing Gate Series - Actuator Type**

Max. Leaf Length: 1.75m
 Max. Leaf Weight: 150kg
 Input: 12V DC
 IP Level: IP44
 Duty Cycle: 20%
 Operating Temperature: -20°C~+60°C

**SW42****Swing Gate Series - Actuator Type**

Max. Leaf Length: 2m
 Max. Leaf Weight: 200kg
 Input: 12V DC
 IP Level: IP44
 Duty Cycle: 20%
 Operating Temperature: -20°C~+60°C



Control Box

T Control



Input: 100 / 120 / 230 / 100~240V AC
Output: 24V DC
Power Supply: 24V/3A EI transformer or 29V/2A SMPS
Number of Actuator: 1~3
Number of Control: 1
Duty Cycle: 10%
Electric Shock Protection Level: II
Certificate:
UL1310, PSE, C-Tick, RoHS, CE,
EMC directive 2014/30/EU,
LVD directive 2014/35/EU,
EMF EN62233, IEC60068, ISTA
Emergency lowering function with backup batteries
Can be mounted on FD60
Color: Black or Light grey RAL7001



FD60+T CONTROL

CBT2



Input: 100 / 120 / 230 / 100~240V AC
Output: 24V DC
Power Supply: 24V/2A EI transformer or 29V/2A SMPS
Number of Actuator: 1~3
Number of Control: 1
Duty Cycle: 10%
Electric Shock Protection Level: I / II
Certificate:
CE, EMC directive 2014/30/EU,
LVD directive 2014/35/EU
Emergency lowering function with backup batteries
Can be mounted on FD60
Detachable AC power cord
Color: Black or Light grey RAL7001



CBTR



Input: 100~240V AC
Max. Output: 29V DC
Power Supply: 29V/2A SMPS
Number of Actuator: 1~2
Number of Control: 1
Duty Cycle: 10%
Electric Shock Protection Level: II
Compliant with CE, EMC directive 2014/30/EU
Support memory function
Can be mounted on FD60
Detachable AC power cord
Color: Black or Light grey RAL7001



CB3T

Input: 120 / 230 / 100~240V AC

Output: 24V DC

Power Supply: 24V/3A EI transformer,
24V/4A EI transformer or 29V/2A SMPS

Number of Actuator: 1~3

Number of Control: 1

Duty Cycle: 10%

Electric Shock Protection Level: II

Certificate:

CE, EMC directive 2014/30/EU,

LVD directive 2014/35/EU

Option: Synchronization of 2 actuators (CB3T-SY)

**CB4M**

Input: 110 / 230V AC

Output: 24V DC

Power Supply: 24V EI transformer

Number of Actuator: 2~4

Number of Control: 1~2

Duty Cycle: 10%

Electric Shock Protection Level: II

Certificate:

CE, EMC directive 2014/30/EU,

LVD directive 2014/35/EU

Option:

Rechargeable batteries 12V DC 1.3Ah*2

Charger function

Synchronization for 2~4 Actuators

Detachable AC power cord

**CF11H**

Input: 100~240V AC

Output: 29V DC

Power Supply: Internal SMPS, 29V/2A

Number of Actuator: 1~2

Number of Control: 1

Duty Cycle: 10%

Electric Shock Protection Level: II

Compliant with CE, EMC directive 2014/30/EU,

LVD directive 2014/35/EU

Detachable AC Power cord



Control Box

CF12H



Input: 100~240V AC
Output: 29V DC
Power Supply: Internal SMPS, 29V/2A
Number of Actuator: 2~4
Number of Control: 1
Duty Cycle: 10%
Electric Shock Protection Level: II
Compliant with CE, EMC directive 2014/30/EU, LVD directive 2014/35/EU
Detachable AC Power cord



CF12S



Input: 100~240V AC
Output: 32V DC
Power Supply: Internal SMPS, 32V/4A
Number of Actuator: 4 (synchronization)
Number of Control: 1
Position memory function
Soft Start / Stop function
Duty Cycle: 10%
Electric Shock Protection Level: II
Compliant with CE, EMC directive 2014/30/EU, LVD directive 2014/35/EU
Detachable AC Power cord



CF15



Input: 100~240V AC
Output: 29V DC
Power Supply: Internal SMPS, 29V/2A
Number of Actuator: 2
Built-in RF Receiver (2.4GHz)
Max. Operating Distance: 5m
USB port for 3C device charging (5V DC, 2A total)
Built-in under bed light (warm white)
Duty Cycle: 10%
Electric Shock Protection Level: II
Support flat and 'Zero Gravity' preset position function
Retract actuators through FLAT button and 9V batteries (not included) for emergency lowering.
Compliant with CE, EMC directive 2014/30/EU, LVD directive 2014/35/EU
Detachable AC Power cord
Option: External under bed light



TXE RF Wireless Control

TXF RF Wireless Control

CF17

Input: 100~240V AC
Output: 29V DC
Power Supply: External SMPS, 29V/2A
Number of Actuator: 3
Built-in RF Receiver (2.4GHz)
Max. Operating Distance: 5m
USB port for 3C device charging (2A total)
External floorlight
Massage function
Bluetooth
Duty Cycle: 10%
Compliant with CE, EMC directive 2014/30/EU,
LVD directive 2014/35/EU



TXQ RF Wireless Control
 - Joint movement for 2 motor
 - LED torch (white)
 - Backlight (blue)

TXR RF Wireless Control
 - LED torch (white)
 - Backlight (blue)

CS1

Input: 29V DC
Output: 29V DC
Power Supply: External SMPS
Number of Actuator: 1~2
Number of Control: 1
Overload Protection Current: 3A-Nominal (PTC)
Duty Cycle: 10%
Certificate: CE, EMC directive 2014/30/EU
Can be mounted on FD60
Option:
 External SMPS (TSW1 or TSW2)
 Emergency lowering function with TSW2



CS1+FD60

CS2

Input: 29V DC
Output: 29V DC
Power Supply: External SMPS
Number of Actuator: 2~4
Number of Control: 1
Joint movement for 2 actuators
Duty Cycle: 10%
Certificate: CE, EMC directive 2014/30/EU
Can be mounted on FD60
Option:
 External SMPS (TSW1, TSW2 or TSW3)
 Emergency lowering function with TSW2



CS2+FD60

Control Box

CF01



Power supply not included, use DIN 5-pin connector to input and output power (29V DC).

Number of Actuator: 2

Frequency: 2.4GHz RF

Operating Distance: 5m

Output: 29V DC

Spared flat function button

Remote control pairing button

LED operation indicator

Duty Cycle: 10%

Compliant with CE, EMC directive 2014/30/EU.



TX12 RF Wireless Control

CF13



Input: 100~240V AC

Output: 29V DC

Power Supply: Internal SMPS, 29V/2A

Number of Actuator: 1

Number of Control: 1

Anti-pinch function

Height display (compatible with DKP3, DP07, DP08)

Memory function

Soft start / stop function

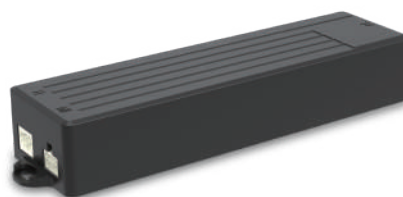
Support USB charging port on hand control

Duty Cycle: 10%

Electric Shock Protection Level: II

Compliant with CE, EMC directive 2014/30/EU

Detachable AC Power cord



CF11



Input: 100~240V AC

Output: 32V DC

Power Supply: Internal SMPS, 32V/4A

Number of Actuator: 2

Number of Control: 1

Synchronization for 2 motors

Anti-pinch function (CF11D only)

Height display (compatible with DKP3, DP07, DP08)

Memory function

Soft start / stop function

Support USB charging port on hand control

Duty Cycle: 10%

Electric Shock Protection Level: II

Compliant with CE, EMC directive 2014/30/EU

Detachable AC Power cord



CB2P

Input: 110 / 230V AC
Output: 24V DC
Power Supply: 24V/2A EI transformer
Number of Actuator: 1~2
Number of Control: 1
Duty Cycle: 10%
IP Level: IP65
Electric Shock Protection Level: II
Certificate: CE, EN60601
Emergency lowering function with backup batteries
Detachable AC Power cord
Can be mounted on MD60, MD66 and MD7



MD60+CB2P

CB4P

Input: 110 / 230V AC
Output: 24V DC
Power Supply: Toroidal transformer 156W / 180W / 216W
Number of Actuator: 3~4
Number of Control: 1~2
Duty Cycle: 10%
IP Level: IPX4
Electric Shock Protection Level: I
Certificate: CE, EN60601
Detachable AC Power cord
Option:
 Charger function
 Rechargeable batteries 12V DC 1.3AH *2
 High power version (CB4P-HP)
 Synchronization for 2 actuators (CB4P-SY)

**CB5P-M****MoBus**

Input: 100~240V AC (SMPS)
Output: 32V DC, 5A @110V / 8A @240V
Number of Actuator: 3~5
Number of Control: 1~2
Duty Cycle: 10%
IP Level: IPX5
Electric Shock Protection Level: II
Compliant with CE, EN60601
Detachable AC Power cord
Battery level detection function
Option:
 Rechargeable batteries 12V DC 1.3Ah *2
 Electric CPR function (need to match a specific MD66 actuator)



Control Box

MD6C-M



MoBus

Input: 100~240V AC
Output: 24V DC
Power Supply: Internal SMPS, 29V/2A
Number of Actuator: 1~4
Number of Control: 1
Duty Cycle: 10%
IP Level: IPX5
Electric Shock Protection Level: II
Certificate: CE, EN60601
Emergency lowering function with backup batteries
Detachable AC Power cord
Can be mounted on MD60 and MD66
Option:
Support positioning memory function
Charging function for external BTP2 backup battery



MD60+MD6C-M

MD6C



Input: 100 / 120 / 230V AC
Output: 24V DC
Power Supply: 24V EI transformer
Number of Actuator: 1~4
Number of Control: 1
Duty Cycle: 10%
IP Level: IPX5
Electric Shock Protection Level: II
Certificate: CE, EN60601
Emergency lowering function with backup batteries
Detachable AC Power cord
Can be mounted on MD60 and MD66



MD60+MD6C

MD7C



Input: 100 / 120 / 230V AC
Output: 24V DC
Power Supply: 24V EI Transformer
Number of Actuator: 1~4
Number of Control: 1
Duty Cycle: 10%
IP Level: IPX4 / IPX5
Electric Shock Protection Level: I
Certificate: CE, EN60601
Emergency lowering function with backup batteries
Detachable AC Power cord
Can be mounted on MD7



MD7+MD7C

CM41-M

MoBus

Input: 100~240V AC

Output: 32V DC, 5A @110V / 8A @ 240V

Number of Actuator: 1~4

Number of Control: 1

Duty Cycle: 10%

IP Level: IPX6

Electric Shock Protection Level: II

FET Control concept (no relay noise)

Standby Power: <0.5W

Compliant with CE, EN60601

Detachable AC Power cord

Can be mounted on MK31-QR

Option:

Battery level detection function

Charging function for external BTP3 backup battery



MK31-QR+CM41-M

CM45

Input: 100~240V AC

Output: 29V DC, 5A total

Number of Actuator: 1~4

Number of Control: 1

Duty Cycle: 10%

IP Level: IPX5

Electric Shock Protection Level: II

Compliant with CE, EN60601

LED Power on indicator

PTC overload protection

Detachable AC Power cord

Can be mounted on MD66



MD66+CM45

CBP2

Input: 120 / 230 / 100~240V AC

Output: 24V DC

Output protection current: 7A (lifting actuator) /
3A (U base legs spreading actuator)

Power Supply: 24V (internal SMPS) or 29V/1A (external SMPS)

Number of Actuator: 1~2

Number of Control: 1

Duty Cycle: 10%

IP Level: IP66 (internal SMPS) / IPX4 (external SMPS)

Electric Shock Protection Level: II

Emergency stop button

LCD display shows status info or error code

Certificate: CE, EN60601

Detachable AC Power cord

Option:

LED indication of charging and usage status

Lead-acid battery (5.0Ah) inside

Charge with CBP2 control box, or charge with CHP1 battery charger.



CHP1 Charger

BTP1 Battery Pack

Control Box

CBP3



Input: 100~240V AC
Output: 24V DC
Overload Protection Current on Lifting Actuator: 5~9A (on demand)
Power Supply: 24V (internal SMPS) or 29V/1A (external SMPS)
Number of Actuator: 1~2
Number of Control: 1
Duty Cycle: 10%
IP Level: IP66 (internal SMPS) / IPX4 (external SMPS)
Electric Shock Protection Level: II
Emergency stop button
LCD display shows status info or error code
History record of abnormal usage
Connect PC to access history records or setting function
Certificate: CE, EN60601
Detachable AC Power cord
Option:
LED indication of charging and usage status
Lead-acid battery (5.0Ah) inside
Charge with CBP3 control box, or charge with CHP1 battery charger.



CHP1 Charger

BTP1 Battery Pack

CM42



Built-in battery charging power supply, input: 100~240V AC
Powered by lead-acid batteries, output: 24V DC
Overload Protection Current on Lifting Actuator: 5~9A (on demand)
Number of Actuator: 1~2
Number of Control: 1
Actuator slow start function makes the movement smooth
Auto power off
Emergency stop button
Backup lower down button
LED indication of charging and usage status
Buzzer sounds if low battery
Duty Cycle: 10%
IP Level: IPX4
Electric Shock Protection Level: II
Compliant with CE, EN60601
Option: Battery capacity 2.9Ah or 5Ah



CM43



Input: 100~240V AC
Output: 24V DC
Overload Protection Current on Lifting Actuator: 5~9A (on demand)
Number of Actuator: 1~2
Number of Control: 1
Actuator slow start function makes the movement smooth
Auto power off
Emergency stop button
LED indication of charging and usage status
Buzzer sounds if low battery
Duty Cycle: 10%
IP Level: IPX4
Electric Shock Protection Level: II
Compliant with CE, EN60601
Option:
Battery capacity 2.9Ah or 5Ah
Charge with CM43 control box, or charge with CH43 battery charger.



CH43 Charger

BT43 Battery Pack

CF16

Input: 24V DC
Output: 24V DC
Overload Protection: 2.4A max.
Power supply provided by the customer
Number of Actuator: 1
Multi-controller connection is possible
Duty Cycle: 10%
Fire alarm signal to open the window or shutters mandatorily
Rain to close the window or shutters
Support wireless remote control
Recommend to use with MK45

**CB3T-SYD**

Input: 12V DC/AC
Output: 12V DC
Max. Current: 5A per channel
Number of Actuator: 2 (synchronization)
Number of Control: 1
Duty Cycle: 10%
Compliant with CE, EMC directive 2014/30/EU

**CI10**

Input: 110 or 230V AC (adjustable)
Output: 24V DC
Max. Current: 10A
Power Supply: 216W (24V, 9A) toroidal transformer
Number of Actuator: 1
No need for hand control
Duty Cycle: 10%
Emergency stop button
Equipped with switch for movement control
LED Power on indicator
Support external backup battery (24V)
2nd Output for Supplementary Device: 24V DC @350mA max.
Recommend to use with ID10, ID10BT, ID11, ID12



Control Box

CIS1



Synchronization Control Box

Input: 24V DC
Output: 24V DC
Max. Current: 7.5A per channel
Number of Actuator: 2
Duty Cycle: 10%
Synchronization for 2 actuators
Work with signals of Hall effect sensor or reed sensor
Memory function

CIS2



Synchronization and High Current Control Box

Input: 12V DC
Output: 12V DC
Max. Current: 10A per channel
Number of Actuator: 2
Duty Cycle: 10%
Synchronization for 2 actuators
Work with signals of Hall effect sensor or reed sensor
Memory function
Battery charging function (AC or solar input)
Software limit protection

CIS3



Synchronization and High Current Control Box

Input: 24V DC
Output: 24V DC
Max. Current: 10A per channel
Number of Actuator: 2
Duty Cycle: 10%
Synchronization for 2 actuators
Work with signals of potentiometer
Memory function

CI71



Input: 12V DC
Output: 12V DC
Input Current: 25Amps
Number of Control: 1
Number of Actuator: 1
Recommend to use with ID10, ID10G, ID10K, ID11, ID12



GCC1



Input: 110 / 230V AC, 60 / 50Hz
Output: 12V DC / 80W Max.
IP Level: IP44



Control (Signal)

HC



Motor Number to Control: 1~4
Available Number of Button: 2, 4, 6, 8, 10
LED power on indicator
With hook
Option: Joint movement or synchronization for 2 motors



HD



Motor Number to Control: 1~4
Available Number of Button: 2, 4, 6, 8, 10
LED power on indicator
With hook
Option: Joint movement for 2 motors



H2D



Motor Number to Control: 3~4
Available Number of Button: 8, 10, 12
IP Level: IPX4
LED power on indicator
With hook
Option:
Joint movement for 2 motors
Nurse lock



HF



Motor Number to Control: 1~4
Available Number of Button: 2, 4, 6, 8, 10
IP Level: IPX4
LED power on indicator
With hook
Option:
Joint movement for 2 motors
Safety key



H3F



Motor Number to Control: 1~3
Available Number of Button: 2, 4, 6, 8
IP Level: IPX4 / IPX6
Button backlight (blue)
With hook
Option: Joint movement for 2 motors



HI



Motor Number to Control: 1~3
Available Number of Button: 2, 4, 6, 8, 9
IP Level: IPX4
With hook
Option:
Joint movement for 2 motors
Memory function
Safety key



HJ

Motor Number to Control: 1~3
Available Number of Button: 2, 4, 6
LED power on indicator
With hook
Option:
 Joint movement for 2 motors
 Magnetic back cover

**HM**

Motor Number to Control: 1~3
Available Number of Button: 2, 4, 6, 8
LED power on indicator
With hook
Option:
 Joint movement or synchronization for 2 motors
 Memory function
 Safety key

**H2N**

Motor Number to Control: 1~3
Available Number of Button: 2, 4, 6, 7, 9
LED torch (white)
With hook
Option:
 Joint movement for 2 motors
 Holder without hook

**H3N**

Motor Number to Control: 1~2
Available Number of Button: 3, 5, 6, 7, 8, 10
LED power on indicator
LED torch (blue)
Button backlight (green)
With hook
Option:
 Joint movement for 2 motors
 Memory function
 Holder with or without hook
 Color (textured black or matt black)

**H3NT**

Motor Number to Control: 1~2
Available Number of Button: 3, 5, 6, 7
LED torch (blue)
Button backlight (blue, triggered by built-in touch sensor or button)
With hook
Option:
 Joint movement for 2 motors
 Holder with or without hook
 Color (textured black or matt black)

**H4N**

Motor Number to Control: 1~2
Available Number of Button: 3, 7, 8, 10
LED torch (blue)
With hook
Option:
 Joint movement for 2 motors
 Button backlight (blue, triggered by G-sensor or button)
 Memory function
 Holder with or without hook



Control (Signal)

H2Z



Motor Number to Control: 1~2
Available Number of Button: 2, 4, 6
LED power on indicator
With hook
Option: Joint movement for 2 motors



HDU



Motor Number to Control: 1
Max. Button Number: 2



HR



Motor Number to Control: 1 pc / pair
Max. Button Number: 2



HT



Motor Number to Control: 1~4
Available Number of Button: 2, 4, 6, 8, 10
IP Level: IPX4 / IPX5
LED power on indicator
With hook
Compatible with CBP2 / CBP3 / CM42 / CM43
Option:
Joint movement for 2 motors
Nurse lock
Safety key



H3T



Motor Number to Control: 1~4
Available Number of Button: 2, 4, 6, 8, 10
IP Level: IPX4
LED power on indicator
With hook
Option:
Joint movement for 2 motors
Nurse lock



HS12



Motor Number to Control: 1~4
Available Number of Button: 2~12
IP Level: IPX6
LED power on indicator
With hook
Option:
Joint movement for 2 motors
Nurse lock



HS12-M

MoBus

Moteck proprietary MoBus protocol
 Motor Number to Control: 2~5
 Available Number of Button: 6, 8, 11, 12
 IP Level: IP66
 LED power on indicator
 With hook
 Option: Button backlight

**H3T-M**

MoBus

Moteck proprietary MoBus protocol
 Motor Number to Control: 1~4
 Available Number of Button: 6, 8, 10
 IP Level: IPX4
 LED power on indicator
 With hook

**CP1**

MoBus

Moteck proprietary MoBus protocol
 Available Number of Button: 21 max.
 Number of LED Power on Indicator: 21 max.
 IP Level: IPX6
 Battery level indicator
 With hook

**CP2**

MoBus

Moteck proprietary MoBus protocol
 Available Number of Button: 29 max.
 Number of LED Power on Indicator: 11 max.
 IP Level: IPX6
 LCD display patient's weight and the status of bed
 With hook

**FS1**

Motor Number to Control: 1
 Max. Button Number: 2
 IP Level: IP54
 Option: Color (RAL7035 or black)

**FS2**

Motor Number to Control: 1~3
 Available Number of Button: 2, 4, 6 (consists of 1~3 units)
 IP Level: IP54 / IP66
 LED power on indicator



Control (Signal)

HTF



Motor Number to Control: 1~2
Available Number of Button: 2, 4
IP Level: IPX5
With hook
Compatible with CBP2 / CBP3 / CM42 / CM43
Option: Safety key



H2T



Motor Number to Control: 1~2
Available Number of Button: 2, 4, 5
IP Level: IPX6
LED: Indicators for power on, battery condition, service reminder and overload alarm.
With hook
Compatible with CBP3 / CM43



HS12L



Motor Number to Control: 1~2
Available Number of Button: 2, 4
IP Level: IPX6
With hook
Compatible with CBP2 / CBP3 / CM42 / CM43
Option: With / without indicators for overload, usage warning, and battery level indication.



DKP4



Max. Button Number: 2



DP11



Max. Button Number: 2
LED power on indicator



DP05



Max. Button Number: 2
Option: Color (white or black)



DKP3

Max. Button Number: 7
 Number of Memory Position: 4
 3-Digit LED display (height read-out and error code)

**DP07**

Max. Button Number: 6
 Number of Memory Position: 3
 3-Digit LED display (height read-out and error code)
 Sliding mounting bracket
 Option: USB Charging port for 3C devices



USB Charging Port

DP08

Max. Button Number: 6
 Number of Memory Position: 3
 3-Digit LED display (height read-out and error code)
 Option: USB Charging port for 3C devices



USB Charging Port

Control (Direct-cut)

HB



Motor Number to Control: 1
Max. Button Number: 2
With hook
Option: LED Power on indicator



H2B



Motor Number to Control: 1~2
Available Number of Button: 2, 4
LED power on indicator
With hook



H2G



Motor Number to Control: 1~2
Available Number of Button: 2, 4
LED power on indicator
With hook



H3B



Motor Number to Control: 2
Max. Button Number: 6
With hook
Option: Joint movement for 2 motors



HS13



Motor Number to Control: 1~2
Available Number of Button: 2, 4
LED power on indicator
IP Level: IPX6
With hook



HS15



Motor Number to Control: 3
Available Number of Button: 6, 8
LED power on indicator
Nurse lock
With hook
Option:
Joint movement for 2 motors
Color (light grey RAL7035 or black)



HS21

Motor Number to Control: 1~2
 Available Number of Button: 3, 5
 Option: Joint movement for 2 motors

**HS22**

Motor Number to Control: 2
 Available Number of Button: 6
 Joint movement for 2 motors

**HS02**

Input / Output: 29V DC
 Input / Output Current: 2A
 Motor Number to Control: 1
 Max. Button Number: 2

**HZ01**

Input / Output: 29V DC
 Input / Output Current: 2A
 Motor Number to Control: 2
 Max. Button Number: 4
 Option:
 USB port for charging
 Button texture (matte or glossy)



GLOSSY BUTTON

MATTE BUTTON WITH
USB PORT**HZ02**

Input / Output: 29V DC
 Input / Output Current: 2A
 Motor Number to Control: 1
 Max. Button Number: 2

**HZ03**

Input / Output: 29V DC
 Input / Output Current: 2A
 Motor Number to Control: 1
 Max. Button Number: 2
 Option: Button texture (matte or glossy)



GLOSSY BUTTON



MATTE BUTTON

Control (Direct-cut)

HZ04



Input / Output: 29V DC
Input / Output Current: 2A
Motor Number to Control: 1
Max. Button Number: 2
Option: USB port for charging



HZ05



Input / Output: 29V DC
Input / Output Current: 2A
Motor Number to Control: 1
Max. Button Number: 2
Option: USB port for charging



HZ06



Input / Output: 29V DC
Input / Output Current: 2A
Motor Number to Control: 1
Max. Button Number: 2



TPSG



Input / Output: 29V DC
Input / Output Current: 2.5A
Motor Number to Control: 1
Max. Touch Button Number: 2
PTC over current protection



TPSL



Input / Output: 29V DC
Input / Output Current: 2A
Motor Number to Control: 1
Max. Touch Button Number: 2



Control (2.4GHz RF)

TXC



Motor Number to Control: 2~3
 Available Number of Button: 5, 7, 9
 Battery: AAA*3
 LED torch (white)
 Button backlight (blue)
 Option:
 Joint movement for 2 motors
 With hook



TXH



Motor Number to Control: 1~3
 Available Number of Button: 2, 4, 6, 8, 9
 Battery: AAA*2
 LED power on indicator
 With hook
 Safety lock
 Option:
 Joint movement for 2 motors
 Memory function



TXT



Motor Number to Control: 1~2
 Available Number of Button: 3, 5, 6, 7, 8, 10
 Battery: AAA*2
 LED torch (amber)
 Button backlight (green)
 With hook
 Option:
 Joint movement for 2 motors
 Memory function
 Holder with or without hook
 Color (textured black or matt black)



TX2T



Motor Number to Control: 2
 Available Number of Button: 5, 7, 8, 10
 Battery: AAA*3
 LED torch (blue)
 Holder with hook
 Option:
 Backlight (blue)
 Joint movement for 2 motors
 Memory function
 Holder with or without hook



TXZ



Motor Number to Control: 1~2
 Max. Button Number: 2, 4, 6
 Battery: AAA*2
 LED power on indicator
 Safety lock in the back
 With hook
 Option: Joint movement for 2 motors



Control (433.92MHz RF)

X3R



Remote Control

Frequency: 433.92MHz RF with rolling code
4 buttons, up to 10 channels.
Battery: 3V/CR2032



RKP2



Wireless Keypad

Frequency: 433.92MHz RF with rolling code
12 buttons
Battery: 9V Alkaline battery



APP CONTROL

CUSTOMIZED FOR IOS/ANDROID PLATFORM
INTEGRATING ERGONOMIC TECHNOLOGY



Accessory

FL2



Floorlight

Input: 5V DC
IP Level: IPX6
LED neutral white



FL3



Floorlight

Input: 24V DC
LED neutral white



JB1



MoBus

Junction Box and Under Bed Light

Work with MoBus protocol
Connection Ports: Total 5
IP Level: IPX5
Optional white LED for under bed light



JB3



MoBus

Junction Box

Work with MoBus protocol
Connection Ports: Total 8
IP Level: IPX6
Support max. 5x ports for MoBus control
Support max. 1x port for analog control
Support max. 1x port for 5V DC lighting switch



SB1



Stop Button

One push to stop all actuators in an emergency
Turn the button to restore easily
IP Level: IPX6



Dual Switch

Switch on/off actuator movement
IP Level: IPX5

**Y Cable**

Connection of additional handset or control box
Option:

2H1C: 2 handsets work with 1 control box
1H2C: 1 handset works with 2 control boxes



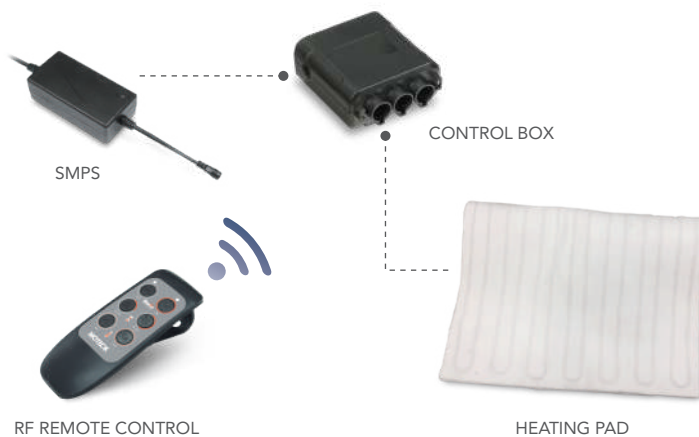
1H2C

2H1C

CS1H**Heating Pad Set**

Input: 110~230V AC
Operating Distance: Approx. 8m
Battery (for RF Remote Control): AAA*2
5-level temperature adjustment

Parts Included:



SMPS

CONTROL BOX

RF REMOTE CONTROL

HEATING PAD

MB22/MB30/C15**Mounting Bracket**

For installing linear actuators
A variety types available



MB22

MB30

C15

Accessory

ESW1



Key Switch

Number of Switch: 2

Number of Key: 3

Compatible with Moteck gate opener control boxes as a wired security switch.



LMC1



Garden Lamp Control Box

Frequency: 433.92 MHz

Input: 230V AC~/ 50Hz

Standby Consumption: 15mA

Working in 2 separate channels

Memory Positions: 30 Max. for 2 channels

Rolling code enabled or disabled

3 operation modes



WLT1



Warning Light

Input: 12V DC / 10W

Provide flashing signals during gate movement and obstacle detection.



IPH1



Photocells

Current Consumption:

TX: 30mA

RX: 25mA



ANT1



Additional Antenna

Frequency: 433.92 MHz

Reliable RF antenna with chromate treatment for weather resistance.

Supplied with 2m coaxial cable

Increase the range of remote control up to 30m.



ARCV



Additional Receiver

Frequency: 433.92 MHz

Input: 12V DC

Standby Current: 15mA

Memory Cells: 30 max. for 2 channels

Rolling code inspection

Partial code deletion or replacement



Accessory (Wireless Receiver)

TBA



Bluetooth Adaptor

Bluetooth low energy (BLE) technology
Operating Distance: 10m
Work with control box or double motor
Pair with iOS / Android devices
Connect to 1 Control
Motor Number to Control: 3(TBA3) or 2(TBA4)
Support emergency "All Down" function
LED power on indicator
Option:
Do not support memory function (TBA3)
Support memory function (TBA4)



TX2A



Wireless Receiver

Frequency: 2.4GHz RF
Power Input: 29V DC / 2A
Operating Distance: 5m
Work with Relay-free system (actuator and power supply, without control box)
Motor Number to Control: 2
Number of Wired Control: 1
Support emergency "All Down" function



TXA



RF Receiver Adapter

Frequency: 2.4GHz RF
Input: 10~24V DC (TXA4) / 5V DC (TXA5)
Operating Distance: 5m
Work with control box or double motor
Motor Number to Control: 3
Support emergency "All Down" function
LED power on indicator
Option:
Do not support memory function (TXA4)
Support memory function (TXA5)

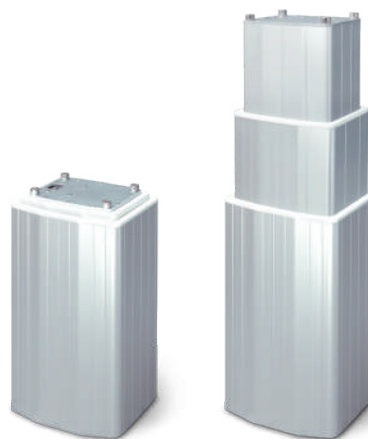


Lifting Column

DLC1



Input: 24V DC
Max. Thrust: 2000N
Typical Speed at No Load: 10.9mm/s
Bending Moment: 500Nm (static) / 250Nm (dynamic)
Stroke: 50~400mm
Duty Cycle: 10%
IP Level: IPX4 / IPX6
Certificate: CE, EN60601
Life Cycle: Over 10,000 cycles
Option: Hall effect sensor



Model No.	Max. Push/Pull Load (N)	Typical Speed (mm/s)		Typical Current (A)	
		No Load	Full Load	No Load	Full Load
DLC1-24RH-350.750-XXXXX	2000	10.9	9.8	1.7	4.1

DLC2



Input: 24V DC
Max. Thrust: 2000N
Typical Speed at No Load: 18mm/s
Bending Moment: 1000Nm (static) / 750Nm (dynamic)
Stroke: 140 / 261 / 450mm
Duty Cycle: 10%
Certificate: CE, EMC directive 2014/30/EU
Option: Hall effect sensor



Model No.	Max. Push/Pull Load (N)	Typical Speed (mm/s)		Typical Current (A)	
		No Load	Full Load	No Load	Full Load
DLC2-24H6-XXX.XXXX-XXXXX	2000	18	13	1.1	4.5

DLC3

Input: 24V DC

Max. Thrust: 4000N

Typical Speed at No Load: 16mm/s

Bending Moment: 2000Nm (static) / 1000Nm (dynamic)

Stroke: 260~1200mm

Duty Cycle: 10%

IP Level: IPX6

Certificate: CE, EN60601

Option: Hall effect sensor



Model No.	Max. Push/Pull Load (N)	Typical Speed (mm/s)		Typical Current (A)	
		No Load	Full Load	No Load	Full Load
DLC3-24FC-XXXX-XXX000	4000	16	13	2.5	11

Gear Motor

DKM1



Gear Motor

Input: 24V DC
Idle Running Speed: 66rpm
Max. Torque: 5Nm
Duty Cycle: 10%
Hollow Shaft: Hexogen 8mm diameter
With dual Hall sensors



DKM3



Gear Motor

Input: 24V DC
Typical Speed: 62rpm after gear reduction
Max. Torque: 5Nm
Duty Cycle: 10%
Hollow Shaft: Hexogen 6 or 8mm diameter
With dual Hall sensors
Recommend to use with CF11D, CF13



DKM4-LF



Gear Motor

Input: 24V DC
Typical Speed: 110rpm after gear reduction
Max. Torque: 7Nm
Duty Cycle: 10%
Hollow Shaft: Hexogen 6mm diameter
With dual Hall sensors
Recommend to use with CF11D, CF13
Certificate: CE, EMC directive 2014/30/EU
Option:
Standard motor
High speed motor



VM01



Massage Motor

Input: 24V DC
Max. Current: 0.5A
Motor Speed: 1500rpm
Lifetime: 600 hours
Overheat protection with PTC thermistor
Certificate: CE, EMC directive 2014/30/EU
Option:
Fixture for board type
Fixture for slat type



VM02



Massage Motor

Input: 24V DC
Max. Current: 0.7A
Motor Speed: 3000rpm
Lifetime: 520 hours
Built-in thermal fuse
Certificate: CE, EMC directive 2014/30/EU
Option:
Fixture for board type
Fixture for slat type



SL20**Sliding Gate Series**

Max. Leaf Weight: 200kg

Input: 230V~, 50/60Hz, 150W max.

Length of Tooth Racks: 4m with 8 tooth racks

IP Level: IP44

Duty Cycle: 20%



TOOTH RACK

SL3D**Sliding Gate Series**

Max. Leaf Weight: 400kg

Input: 230V~, 50/60Hz, 200W max.

Length of Tooth Racks: 4m with 8 tooth racks

IP Level: IP44

Duty Cycle: 20%



TOOTH RACK

SW32**Swing Gate Series - Arm Type**

Max. Leaf Length: 2.75m

Max. Leaf Weight: 275kg

Input: 12V DC

IP Level: IP44

Duty Cycle: 20%



Double Motor

TW41/TW61



Input: 100~240V AC
Output: 29V DC
Power Supply: Internal SMPS
Max. Load: 2*4500N (TW41)
2*6000N (TW61)
Typical Speed at No Load: 5mm/s
Max. Number of Additional Actuator: 2 channels (24V DC)
Max. Number of Control: 1 channel
Duty Cycle: 10%
Stroke: 29~87mm
IP Level: IP43 / IP54
Electric Shock Protection Level: II
Certificate: CE, EMC directive 2014/30/EU,
LVD directive 2014/35/EU
Option:
Position memory with Hall effect sensors
9V DC backup batteries *2
Color (black or RAL 7035)



TW41-RMS/TW61-RMS



Input: 100~240V AC
Output: 29V DC
Power Supply: Internal SMPS
Max. Load: 2*4500N (TW41)
2*6000N (TW61)
Typical Speed at No Load: 5mm/s
Duty Cycle: 10%
Stroke: 29~87mm
IP Level: IP43 / IP54
Electric Shock Protection Level: II
Synchronization function
Built-in RF Receiver
Memory function
Massage function
Compliant with CE, EMC directive 2014/30/EU
Option:
9V DC backup batteries *2
Color (black or RAL 7035)



TXM RF Wireless Control
- Button backlight (blue)
- LED torch (white)

BEST LUXURIOUS **ALL-IN-ONE** SOLUTION FOR ADVANCED BOX SPRING BED

6000N FORCE

BUILT-IN SMPS & 2.4GHz RF RECEIVER

MASSAGE FUNCTION

BACKUP BATTERY FOR EMERGENCY LOWERING

SYNCHRONIZATION FUNCTION WITH A CABLE CONNECTION BETWEEN 2 UNITS



TXM WIRELESS CONTROL



Power Supply

TSW1



Switching Mode Power Supply (SMPS)

Input: 100~240V AC
 Standby Power Consumption: <0.5W @ no load
 Output: 29V DC, 2A
 Electric Shock Protection Level: II



TSW2



Switching Mode Power Supply (SMPS)

Input: 100~240V AC
 Standby Power Consumption: <0.5W @ no load
 Output: 29V DC, 2A
 Electric Shock Protection Level: II
 Emergency lowering function with backup batteries



TSW3



Switching Mode Power Supply (SMPS)

Input: 100~240V AC
 Standby Power Consumption: <0.5W @ no load
 Output: 29V DC, 3A
 Electric Shock Protection Level: I



TSW4



Switching Mode Power Supply (SMPS)

Input: 100~240V AC
 Standby Power Consumption: <0.5W @ no load
 Output: 29V DC, 1A
 Electric Shock Protection Level: II
 Wall plug type



CHP1



Charger

For BTP1 Battery pack
 Input Voltage: 100 / 120 / 230V AC
 DC Charger: Max. 800mA
 Output Voltage: 27V / Max. 25VA
 Option: LED power on indicator



BTP1



Battery Pack

Apply to CBP2, CBP3 and CHP1
 Output Voltage: 24V / Max. 10VA
 12V 5Ah x2 Lead-acid batteries
 Option: Battery level indicator



CH43**Charger**

For BT43 Battery pack
 Input Voltage: 100~240V AC
 Output Current: 0.625A
 Output Voltage: 24V DC
 Short circuit protection

**BT43****Battery Pack**

Apply to CM43 and CH43
 Output Voltage: 24V
 Option:
 12V 5Ah x 2 Lead-acid batteries
 12V 2.9Ah x 2 Lead-acid batteries



Battery 5Ah

Battery 2.9Ah

BTP3**Battery Box**

Apply to CM41-M
 Output: 24V DC
 Charging input voltage: 32V DC
 1.3Ah Lead-acid battery
 IP Level: IPX6
 LED power on indicator
 Charge ON / OFF buttons

**ZB-B1800****Battery Pack**

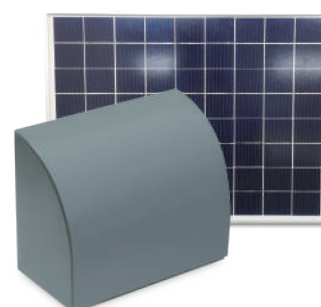
Input Voltage: 24~32V DC
 Input Current: 0.6~3A
 Output Voltage: 21~29V DC
 Output Current: 3A
 Nominal Voltage: 25.2A
 Over Current Protection: 5A
 Short circuit protection
 Capacity: 1800mAh
 Charge with SMPS

**BKT3****Battery Box**

Include 12V/10Ah rechargeable Lead-acid battery

**BKT5****Solar Kit**

Battery box*1 include 24V/4Ah or
 12V/8Ah rechargeable Lead-acid batteries
 20W/18V solar panel*1



Adjustable Desk

DKL2



Input: 24~32V DC
Max. Load: 1200N
Typical Speed at No Load: 22mm/s
Stroke: 460mm
Retracted Length: 560mm
Duty Cycle: 10%
Compliant with CE, EMC directive 2014/30/EU, UL 962
Hall effect sensor



Model No.	Max. Push Load (N)	Typical Speed (mm/s)		Typical Current (A)	
		No Load	Full Load	No Load	Full Load
DKL2	1200	22	18	1.0	3.4

DKL3



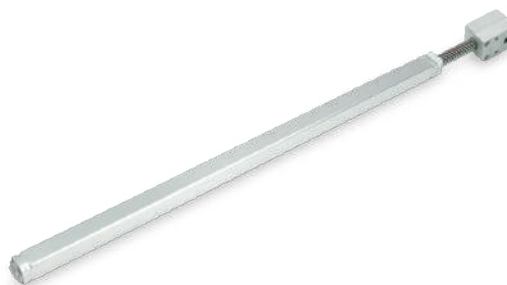
Input: 24~32V DC
Max. Load: 1200N
Typical Speed at No Load: 45mm/s
Stroke: 650mm
Retracted Length: 553mm
Duty Cycle: 10%
Compliant with CE, EMC directive 2014/30/EU, UL 962
Hall effect sensor



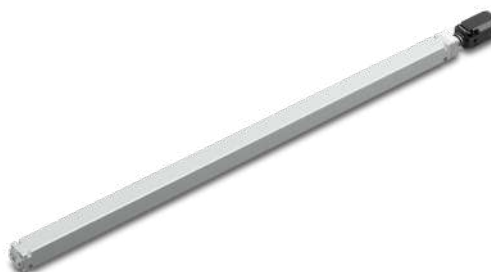
Model No.	Max. Push Load (N)	Typical Speed (mm/s)		Typical Current (A)	
		No Load	Full Load	No Load	Full Load
DKL3	1200	45	26	0.8	5.5

DKS2

Max. Load: 1000N
Gear Ratio: 1:1
Spindle Lead: 8, 12mm
Stroke: 500mm
Driven by Hexagon metal rod (diagonal diameter 6mm)
Installation Length: 555mm

**DKS3**

Max. Load: 700N
Gear Ratio: 1:1
Spindle Lead: 6mm
Stroke: 500mm
Driven by Hexagon metal rod (diagonal diameter 6mm)
Installation Length: 629mm





The information contained in this publication has been carefully taken to ensure the accuracy. However, it is the responsibility of the product user to determine the suitability for a specific application. There is no liability can be accepted for any loss or damage whether direct, indirect or consequential occurring out of the operation.

© 2021 July MOTECK printed in Taiwan. The contents of this publication are the copyright of the publisher and may not be copied or even extracted unless prior written permission is authorized.



Scan this QR code to download the up-to-date catalogue.

MOTECK®

1F-1, No.79, Sec. 1, Xintai 5th Rd., Xizhi Dist., New Taipei City 22101, Taiwan(R.O.C.)
Tel: +886-2-2698-1220 Fax: +886-2-2698-1324 E-mail: sales@moteck.com.tw

www.moteck.com