

2022



# 齒輪減速機 GEAR MOTOR

直交軸  
RIGHT ANGLE  
平行軸  
PARALLEL



SK SGW

SLF



SLH



SNE



SV



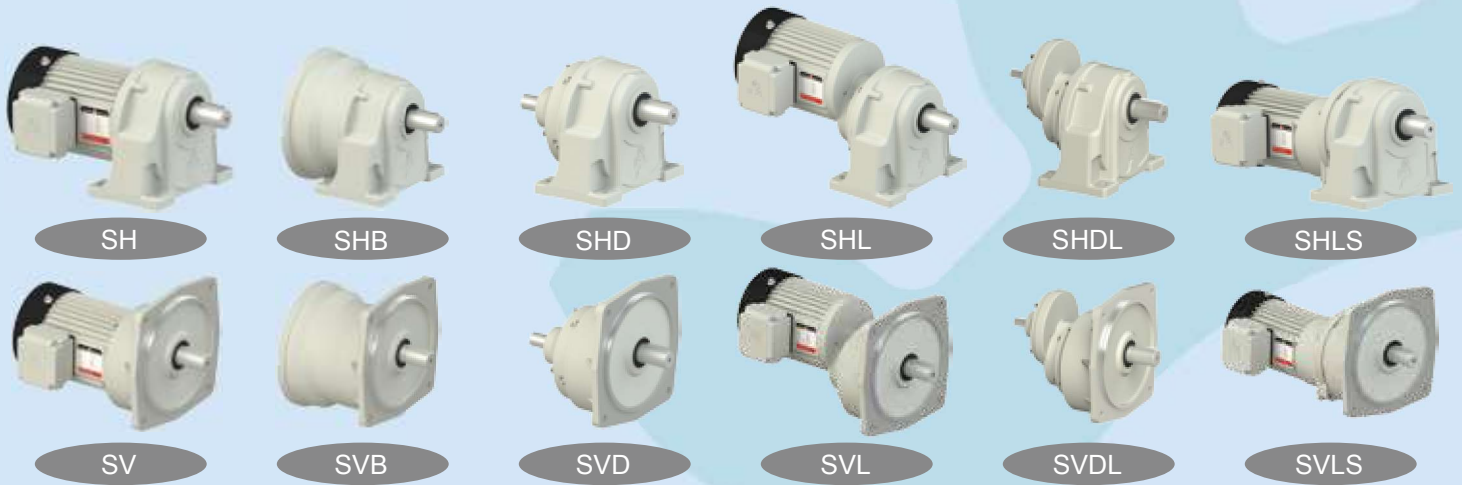
SH



<60W> 0.1kW ~ 2.2kW

# LIMING REDUCERS

## 小型齒輪減速機系列 SMALL GEAR REDUCER



## 小型戟齒輪減速機系列 SMALL HYPOID GEAR REDUCER



## 小型同心軸戟齒輪減速機系列 SMALL HYPOID GEAR REDUCER(Concentric Shaft)



註：另有實心軸系列 (SK-D)

NOTE: There are also solid shaft series (SK-D)

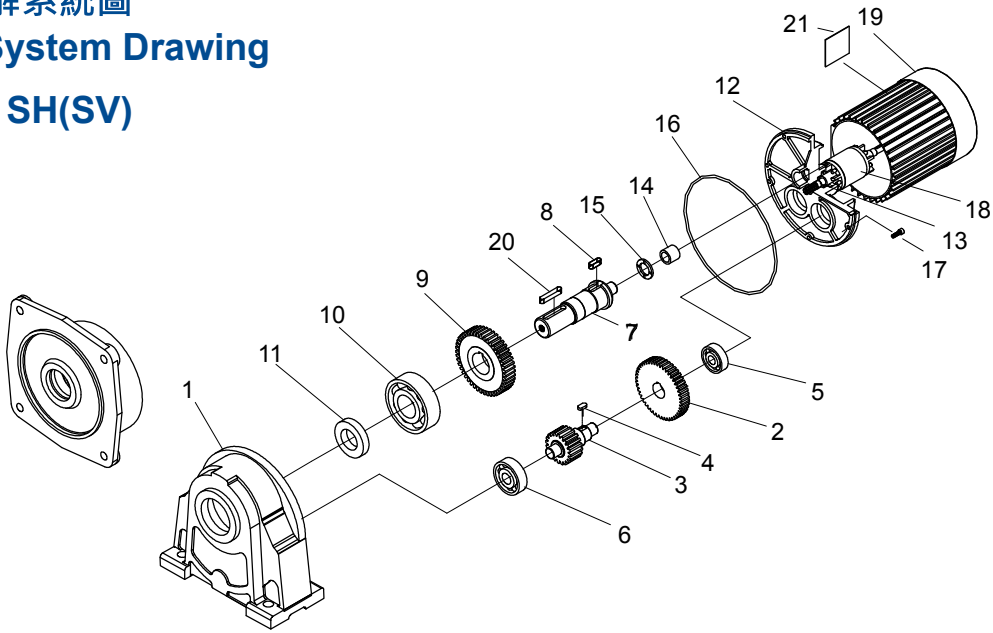
## 小型蝸輪減速機系列 SMALL WORM REDUCER



### ■ 二段式分解系統圖

### 2-Stage System Drawing

### ■ MODEL : SH(SV)



| NO. | 零件名稱 | Name of Parts |
|-----|------|---------------|
| 1   | 本體   | Body          |
| 2   | B齒輪  | Gear B        |
| 3   | C齒輪  | Gear C        |
| 4   | 鍵    | Key           |
| 5   | 軸承   | Bearing       |
| 6   | 軸承   | Bearing       |
| 7   | 出力軸  | Output Shaft  |

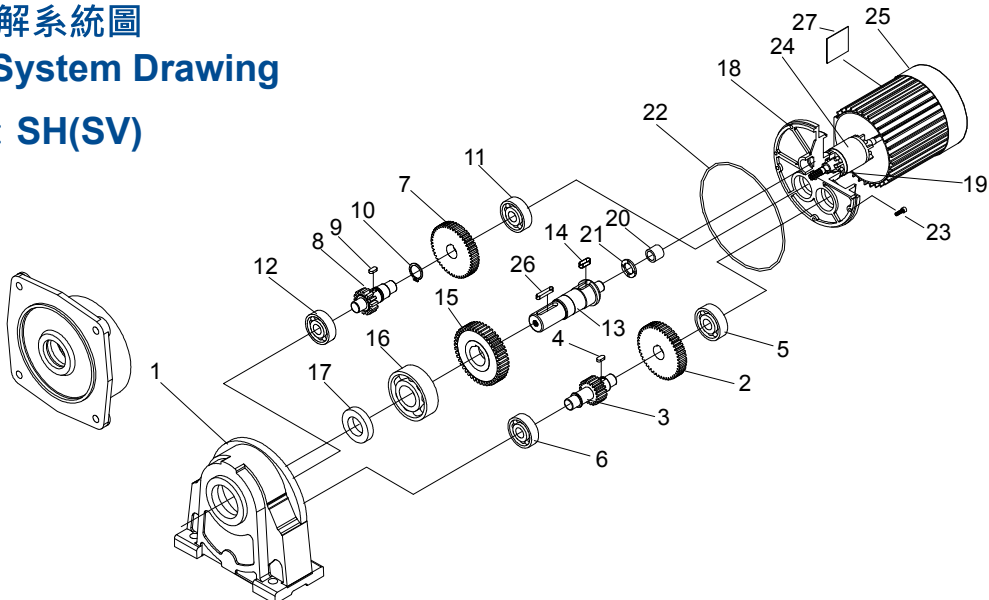
| NO. | 零件名稱 | Name of Parts  |
|-----|------|----------------|
| 8   | 鍵    | Key            |
| 9   | D齒輪  | Gear D         |
| 10  | 軸承   | Bearing        |
| 11  | 油封   | Oil Seal       |
| 12  | 後蓋   | Rear Cover     |
| 13  | 油封   | Oil Seal       |
| 14  | 針狀軸承 | Needle Bearing |

| NO. | 零件名稱 | Name of Parts |
|-----|------|---------------|
| 15  | 止推墊片 | Washer        |
| 16  | O型環  | O-Ring        |
| 17  | 固定螺絲 | Fixing Screw  |
| 18  | A齒輪  | Gear A        |
| 19  | 馬達   | Motor         |
| 20  | 鍵    | Key           |
| 21  | 銘牌   | Name Plate    |

### ■ 三段式分解系統圖

### 3-Stage System Drawing

### ■ MODEL : SH(SV)



| NO. | 零件名稱 | Name of Parts |
|-----|------|---------------|
| 1   | 本體   | Body          |
| 2   | B齒輪  | Gear B        |
| 3   | E齒輪  | Gear E        |
| 4   | 鍵    | Key           |
| 5   | 軸承   | Bearing       |
| 6   | 軸承   | Bearing       |
| 7   | F齒輪  | Gear F        |
| 8   | C齒輪  | Gear C        |
| 9   | 鍵    | Key           |

| NO. | 零件名稱 | Name of Parts |
|-----|------|---------------|
| 10  | 扣環   | Snap ring     |
| 11  | 軸承   | Bearing       |
| 12  | 軸承   | Bearing       |
| 13  | 出力軸  | Output shaft  |
| 14  | 鍵    | Key           |
| 15  | D齒輪  | Gear D        |
| 16  | 軸承   | Bearing       |
| 17  | 油封   | Oil seal      |
| 18  | 後蓋   | Rear Cover    |

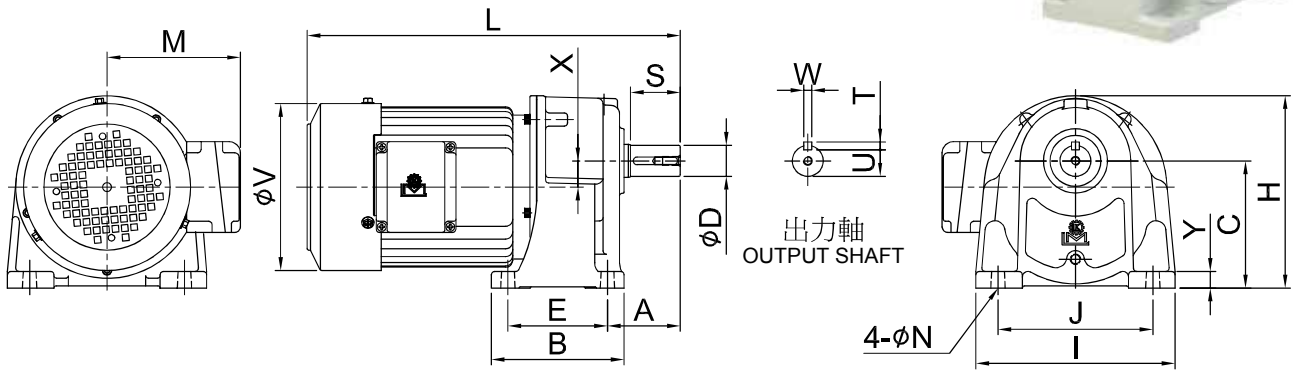
| NO. | 零件名稱 | Name of Parts  |
|-----|------|----------------|
| 19  | 油封   | Oil seal       |
| 20  | 針狀軸承 | Needle Bearing |
| 21  | 止推墊片 | Washer         |
| 22  | O型環  | O-ring         |
| 23  | 固定螺絲 | Fixing screw   |
| 24  | A齒輪  | Gear A         |
| 25  | 馬達   | Motor          |
| 26  | 鍵    | Key            |
| 27  | 銘牌   | Name plate     |

# SMALL GEAR REDUCER SERIES



## ■ 臥式減速機 Horizontal Type Reducer

### ■ MODEL : SH



### 機種型號表示 Indication of Model Numbers

| SH                             | 10                                              | 1/8                                                                     | A                                                                                  | 1/3                                     |
|--------------------------------|-------------------------------------------------|-------------------------------------------------------------------------|------------------------------------------------------------------------------------|-----------------------------------------|
| 機型<br>Type<br>SH<br>SHD<br>SHB | 型號<br>Model<br>10<br>11<br>12<br>13<br>14<br>15 | 馬力<br>Horse Power<br>1/8 HP<br>1/4 HP<br>1/2 HP<br>1 HP<br>2 HP<br>3 HP | 馬達<br>Motor<br>A: 三相 3-Phase<br>B: 剎車 Brake<br>C: 特殊 Special<br>S: 單相 Single Phase | 減速比<br>Ratio<br>1/5<br>~<br>1/2000<br>※ |

| 出力軸螺絲孔<br>Output Shaft Screw Hole |                              |
|-----------------------------------|------------------------------|
| 型號<br>Model                       | 螺絲規格<br>Screw Specifications |
| 10                                | M6                           |
| 11                                | M6                           |
| 12                                | M8                           |
| 13                                | M10                          |
| 14                                | M12                          |
| 15                                | M16                          |

注：SH·SV 系列通用。  
NOTE: Common for SL series.

※ 表中減速比以公稱速比，如需實際速比，請另告知。

The reduction ratio in the table are nominal ratios. Please contact us if your need actual ratios.

unit: mm

| 馬力<br>Horse Power | 型號<br>Model | 減速比<br>Ratio             | A   | E   | B   | J   | I   | C   | H   | Y  | N  | X  | L   | M   | V   | 出力軸 Output Shaft |    |    |   |      | 重量<br>Weight (KG) |
|-------------------|-------------|--------------------------|-----|-----|-----|-----|-----|-----|-----|----|----|----|-----|-----|-----|------------------|----|----|---|------|-------------------|
|                   |             |                          |     |     |     |     |     |     |     |    |    |    |     |     |     | D                | S  | W  | T | U    |                   |
| 1/8HP<br>(0.1kW)  | 10          | 1/3~1/50 (1/60~1/200)    | 46  | 40  | 65  | 110 | 135 | 85  | 129 | 12 | 9  | 17 | 280 | 108 | 123 | 18               | 30 | 5  | 5 | 15   | 5                 |
|                   | 11          | 1/6~1/200                | 57  | 65  | 90  | 130 | 155 | 95  | 145 | 13 | 9  | 17 | 305 | 108 | 123 | 22               | 40 | 7  | 7 | 18   | 7                 |
| 1/4HP<br>(0.2kW)  | 10          | 1/3~1/30 (1/40~1/155)    | 46  | 40  | 65  | 110 | 135 | 85  | 129 | 12 | 9  | 17 | 295 | 115 | 137 | 18               | 30 | 5  | 5 | 15   | 8                 |
|                   | 11          | 1/3~1/90 (1/95~1/155)    | 57  | 65  | 90  | 130 | 155 | 95  | 145 | 13 | 9  | 17 | 315 | 115 | 137 | 22               | 40 | 7  | 7 | 18   | 10                |
| 1/2HP<br>(0.4kW)  | 12          | 1/35~1/200               | 66  | 90  | 120 | 140 | 180 | 115 | 175 | 15 | 11 | 23 | 330 | 115 | 137 | 28               | 45 | 7  | 7 | 24   | 11                |
|                   | 11          | 1/3~1/30 (1/35~1/120)    | 57  | 65  | 90  | 130 | 155 | 95  | 145 | 13 | 9  | 17 | 325 | 121 | 151 | 22               | 40 | 7  | 7 | 18   | 12                |
| 1HP<br>(0.75kW)   | 12          | 1/3~1/90 (1/100~1/200)   | 66  | 90  | 120 | 140 | 180 | 115 | 175 | 15 | 11 | 23 | 340 | 121 | 151 | 28               | 45 | 7  | 7 | 24   | 13                |
|                   | 13          | 1/25~1/200               | 78  | 130 | 165 | 170 | 210 | 130 | 205 | 18 | 13 | 26 | 365 | 121 | 151 | 32               | 55 | 10 | 8 | 27   | 16                |
| 2HP<br>(1.5kW)    | 12          | 1/3~1/30 (1/40~1/130)    | 66  | 90  | 120 | 140 | 180 | 115 | 175 | 15 | 11 | 23 | 360 | 128 | 163 | 28               | 45 | 7  | 7 | 24   | 16                |
|                   | 13          | 1/3~1/90 (1/100~1/165)   | 78  | 130 | 165 | 170 | 210 | 130 | 205 | 18 | 13 | 26 | 385 | 128 | 163 | 32               | 55 | 10 | 8 | 27   | 19                |
| 3HP<br>(2.2kW)    | 14          | 1/35~1/180 (1/200)       | 95  | 150 | 195 | 210 | 255 | 150 | 240 | 20 | 15 | 28 | 430 | 128 | 163 | 40               | 65 | 10 | 8 | 35   | 44                |
|                   | 12          | (1/2.5~1/60)             | 66  | 90  | 120 | 140 | 180 | 115 | 175 | 15 | 11 | 23 | 395 | 138 | 181 | 28               | 45 | 7  | 7 | 24   | 25                |
| 3HP<br>(2.2kW)    | 13          | 1/3~1/25 (1/30~1/130)    | 78  | 130 | 165 | 170 | 210 | 130 | 205 | 18 | 13 | 26 | 425 | 138 | 181 | 32               | 55 | 10 | 8 | 27   | 28                |
|                   | 14          | 1/30~1/90 (1/100~1/170)  | 95  | 150 | 195 | 210 | 255 | 150 | 240 | 20 | 15 | 28 | 465 | 138 | 181 | 40               | 65 | 10 | 8 | 35   | 46                |
| 3HP<br>(2.2kW)    | 15          | 1/80~1/150 (1/170~1/200) | 112 | 170 | 225 | 265 | 330 | 185 | 295 | 25 | 19 | 38 | 500 | 138 | 181 | 50               | 80 | 14 | 9 | 44.5 | 46                |
|                   | 13          | (1/3~1/80)               | 78  | 130 | 165 | 170 | 210 | 130 | 205 | 18 | 13 | 26 | 465 | 138 | 181 | 32               | 55 | 10 | 8 | 27   | 28                |
| 3HP<br>(2.2kW)    | 14          | 1/25~1/50 (1/60~1/170)   | 95  | 150 | 195 | 210 | 255 | 150 | 240 | 20 | 15 | 28 | 505 | 138 | 181 | 40               | 65 | 10 | 8 | 35   | 46                |
|                   | 15          | 1/30~1/85 (1/90~1/100)   | 112 | 170 | 225 | 265 | 330 | 185 | 295 | 25 | 19 | 38 | 550 | 190 | 212 | 50               | 80 | 14 | 9 | 44.5 | 56                |

注：

- 表中 ( ) 內數字系表示輕荷重使用。
- 表中重量以配合三相 4P 馬達為主，其它單相、剎車、直流、特殊等馬達重量另訂。
- 表中 L、LL 內數字以三相 (剎車) 馬達為主，其它特殊馬達另訂。
- 如需特殊馬達規格，請洽本司業務。
- 以上數值若有變更，恕不另行通知。

NOTE:

- Values shown in parenthesis ( ) are used for light loading.
- Weights shown in the above chart are based on 3-phase 4P motors, weights for single phase, brake, DC, or special motor shall be referred to specific values.
- Values shown in "L" & "LL" column are based on 3-phase (brake) motor, other special motor refer to specific motor refer to specific values.
- For special motor specifications, please contact our business.
- Above specifications are subject to change without prior notice.