

HY series

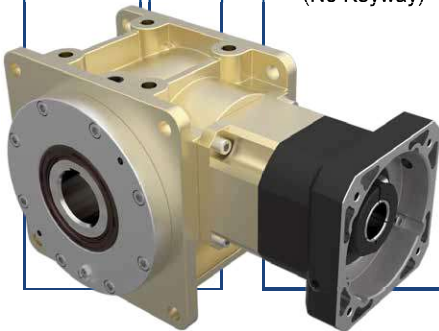


HY

Indication of Model Numbers

機種型號表示

HY	55	F	O	B	5	L	P0
減速機機型 Type	型號 Model	入力表示 Input	出力表示 Output	軸承形式 Bearing	速比 Ratio	軸向 Shaft Direction	背隙等級 Backlash Class
HY	55 75 90 115 130 140 160 190	F: 入力法蘭 Input Flange R44: 減速機 Reducer 1-Stage: R44、R62... 2-Stage: R62S... 2-Stage (A-Type) : R44A、R62A... D: 單入力軸心 (有鍵槽) Single Input Shaft (Keyway) D1: 單入力軸心 (無鍵槽) Single Input Shaft (No Keyway)	O: 出力中空軸 Hollow Output Shaft N: 單邊免鍵軸套 Single Clamping M: 雙邊免鍵軸套 Double Clamping S: 單出力軸心 (有鍵槽) Single Output Shaft (Keyway) S1: 單出力軸心 (無鍵槽) Single Output Shaft (No Keyway) V: 雙出力軸心 (有鍵槽) Double Output Shaft (Keyway) V1: 雙出力軸心 (無鍵槽) Double Output Shaft (No Keyway) P: 螺桿式 (75#~190#) Ball Screw 限用滾錐軸承 Taper Bearing Only	B: 滾珠軸承 Ball Bearing (55#~190#) T: 滾錐軸承 Taper Bearing (90#~190#)	單段 1-Stage 5, 10, 15 ----- 搭配單段 行星減速機 With 1-Stage Planetary Reducer 25 ~ 150 搭配雙段 行星減速機 With 2-Stage Planetary Reducer 250 ~ 1500	L: 左軸 Left Shaft R: 右軸 Right Shaft ----- 1. 出力形式 N、 S 可以選擇軸向 Shaft direction is optional for output type N, S. 2. 出力形式 P 為 R 軸向 Output type P only for R shaft.	P0 P1 P2



The Model & Ratio Table of Hypoid Gear Reducer Assembly Planetary Reducer 蝕齒輪減速機搭配行星減速機型號及速比一覽表

型號 Model	減速比 Ratio	法蘭盤框號 Flange Model	減速機框號 Planetary Reducer Model	單段行星減速機減速比 Ratio of 1-Stage Planetary Reducer 5、10	雙段行星減速機減速比 Ratio of 2-Stage Planetary Reducer 25、50、100
55	5 10 15	44	44	搭配單段行星減速機減速比 Ratio of Bevel Gear Recucer with 1-Stage Planetary Reducer 25、50、75、100、150	搭配雙段行星減速機減速比 Ratio of Bevel Gear Recucer with 2-Stage Planetary Reducer 250、500、750、1000、1500
75		62	62		
90		90	80		
115		90	90		
130		120	120		
140		142	142		
160		142	142		
190		180	180		

Selection of Type

產品樣式選擇

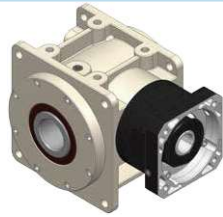
入力形式 Input Type

F 入力法蘭
Input Flange

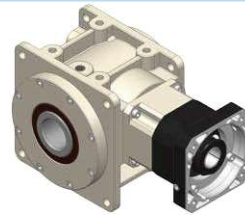
R 減速機
Reducer

D 單入力軸心
Single Input Shaft

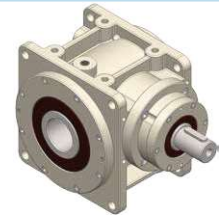
O
出力中空軸
Hollow
Output
Shaft



FO

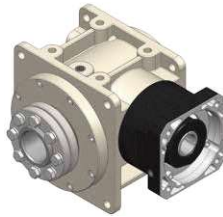


RO

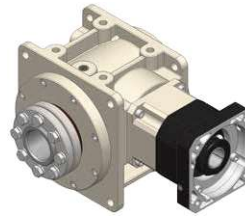


DO

N
單邊
免鍵軸套
Single
Clamping



FN

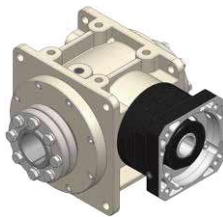


RN

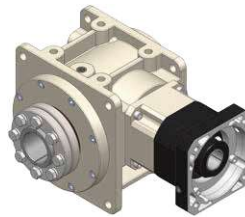


DN

M
雙邊
免鍵軸套
Double
Clamping



FM

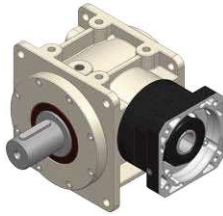


RM

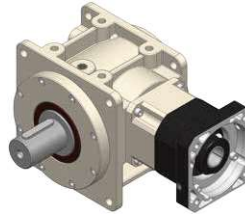


DM

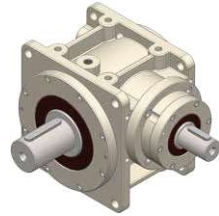
S
單出力軸心
Single
Output Shaft



FS

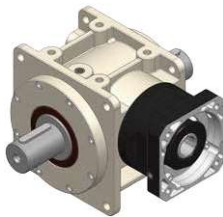


RS

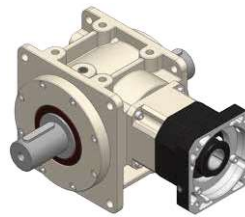


DS

V
雙出力軸心
Double
Output Shaft



FV



RV



DV

P
螺桿式
Ball Screw



FP



RP



DP

出力形式

Output Type

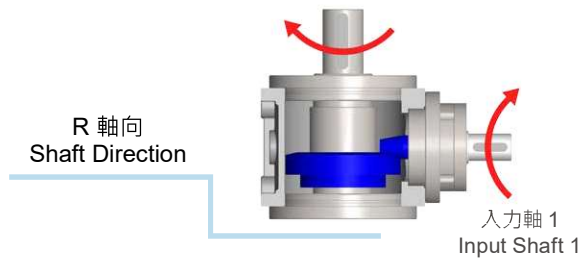
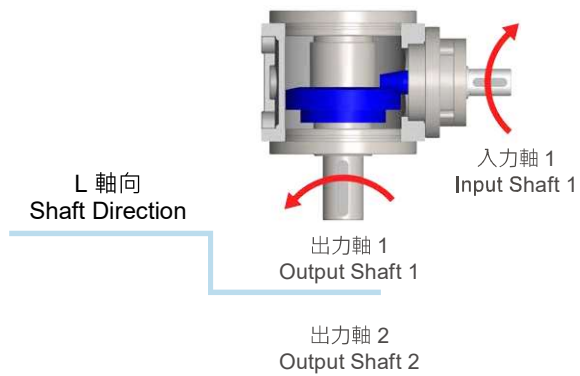
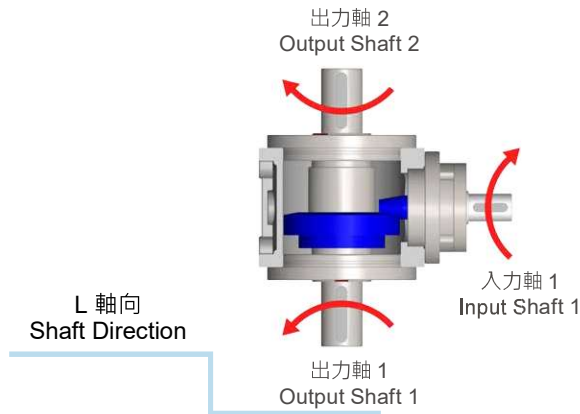
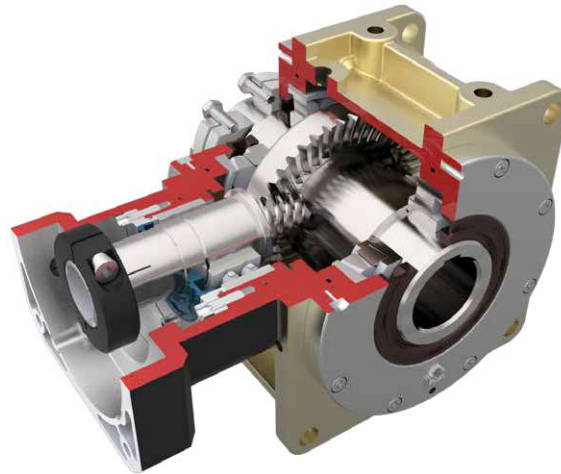
- 出力形式 N、S 可以選擇軸向。Shaft direction is optional for output type N, S.
- 出力形式 P 為 R 軸向。Output type P only for R shaft.

HY

Rotating Direction

旋轉方向說明

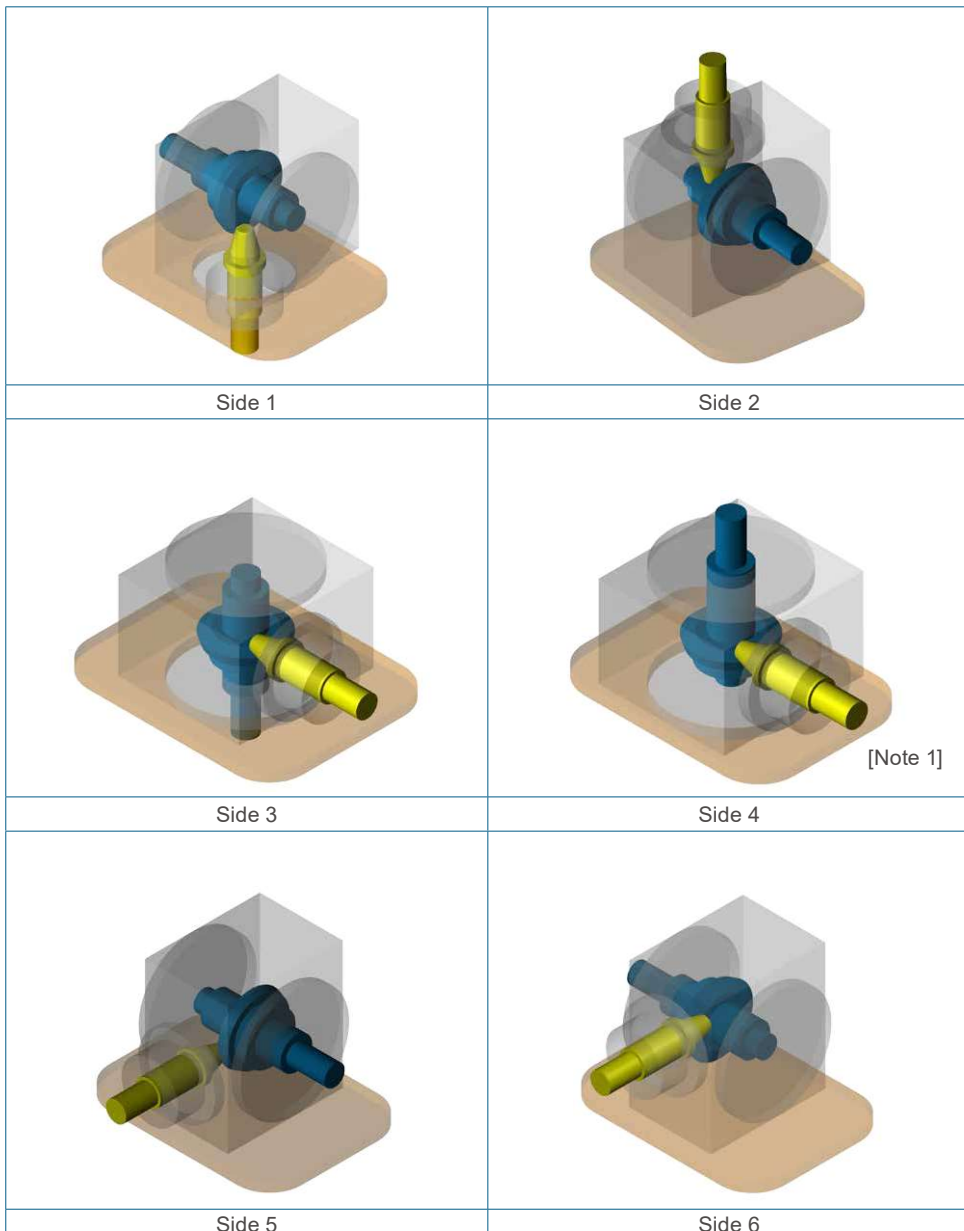
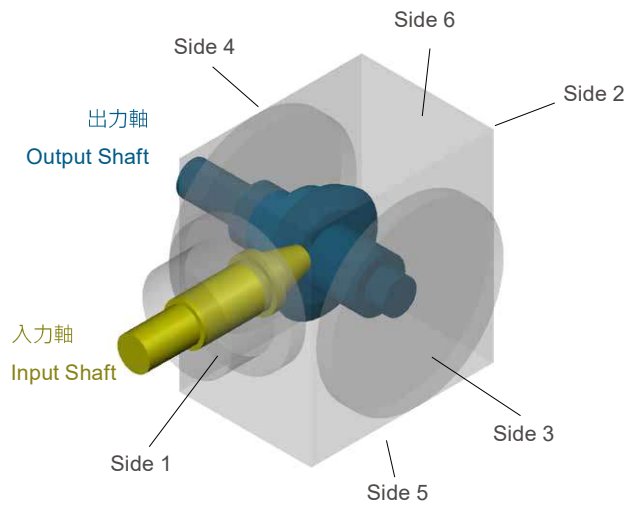
HY



Note:
本公司出廠標準品使用「標準軸向」，R 軸向請於訂單上註明。
Standard product is L shaft direction, R shaft direction is optional.

Selection Direction of Installation

安裝方向選擇



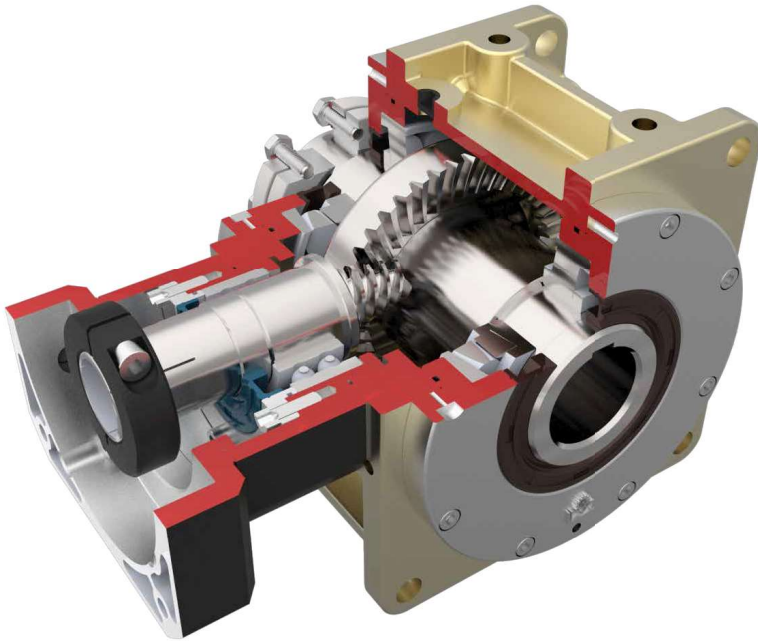
[Note 1] 出力形式為 R 軸向。 Output type for R shaft.

HY

Features of HY Series

HY 系列產品特點

HY



在設計HYGear時，已充分考慮到它將運用在及其廣泛的領域中。特別是在高動力伺服驅動應用中，將帶給用戶獨一無二的優勢。

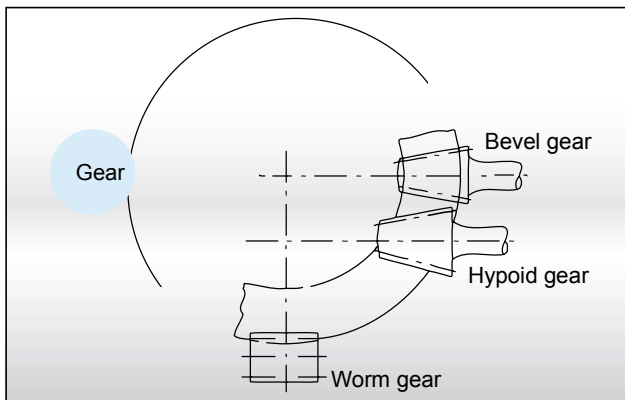


低背隙

- 格里森高減速比蝕齒輪，標準品單級可達 1/15。
- 可訂製減速比單級 1/20~1/60。

Super-Reduction-Hypoid Gear

- Gleason super-reduction-hypoid gear tooth system, the max. single stage ratio is 1/15.
- Single stage ratio 1/20~1/60 is optional.

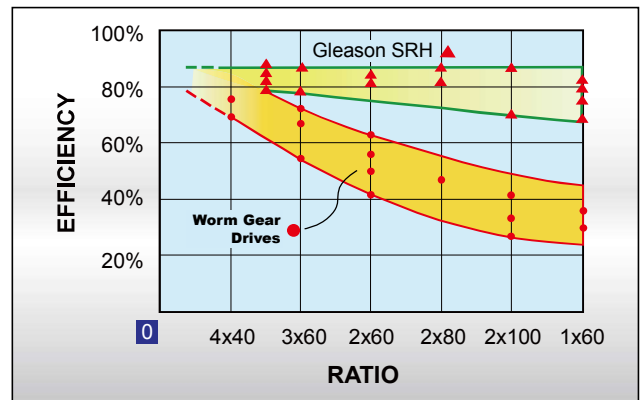


高扭矩密度

- 一體式齒箱本體確保最大剛性與耐蝕性。
- 結構緊湊，富有剛性的設計保證了在小體積，重量輕的情況下能夠達到最高扭矩及較大的減速比。

High Output Torque

- The gear box is one-piece constructed to ensure the high rigidity and corrosion-resistant capability.



高扭矩密度

- 減速機的效率高達 90% 大大節省能源成本。

High Output Torque

- High running efficiency, the efficiency more then 90%.

Features of HY Series

HY 系列產品特點

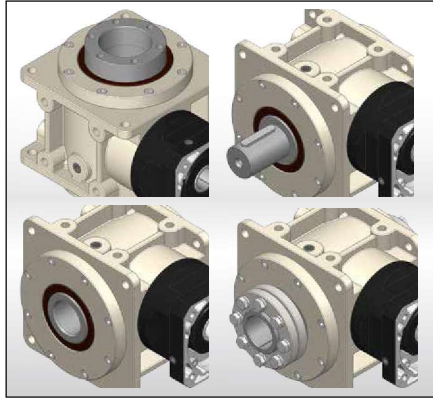


低背隙

- 使用 Gleason 參數齒輪加工設備，加工研磨等級的螺旋傘齒輪，確保低背隙、低噪音。
- 背隙最小可達 2 弧分以內。

Low Backlash

- Using Gleason high precision CNC grinding machine to grinding the spiral bevel gears.
- Torsional backlash depending on design up to <2 arcmin

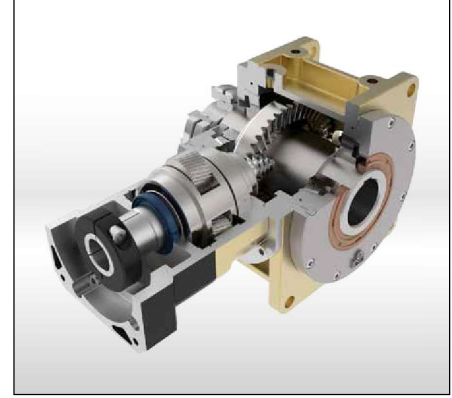


安裝位置

- 多重精密加工表面易於組裝，適用於任意安裝方向。
- 入出力軸的設計可以適用於各種工業上應用的需求。

Mounting Position

- Multiple precision machined surface is easy for assembly, suitable for any optional mounting orientation.
- Output shaft and input shaft are designed to suit for various industries applications.

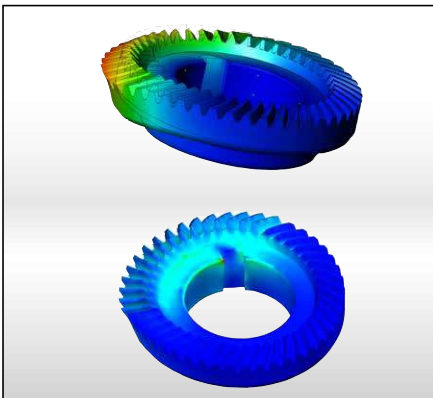


更高的減速比

- 高精度研磨的蝸線傘齒輪組結合最佳化設計的行星式齒輪組可以達到 1500:1 的減速比。

More High Gear Ratio

- High precision grinded and carburized spiral bevel gears with optimal designed planetary gear can do ratio 1500: 1.

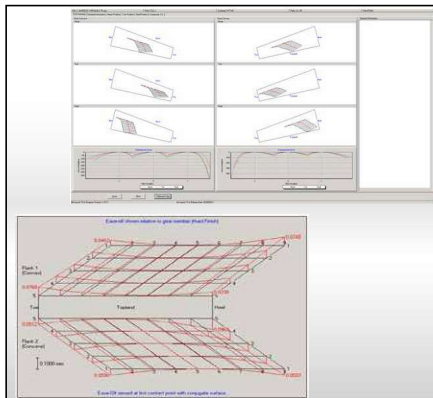


CAE 設計分析技術

- 利用 3D-CAE 軟體的設計分析技術，對減速機整體強度及螺旋傘齒輪進行分析，增加齒輪系及減速機的使用壽命。

CAE Design and Analysis

- Employs 3D-CAE software for analysis and design, the software allows for analyzing the strength of the entire gear reducer and helical teeth. Increasing the service life of gears and the gear reducer.

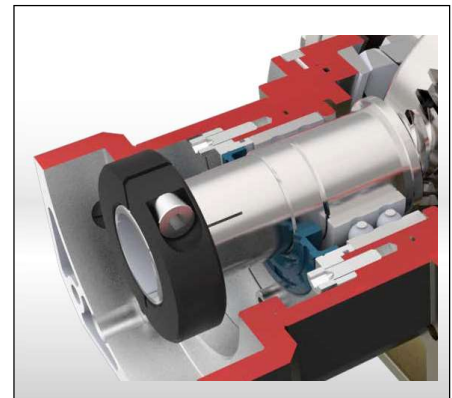


最優化的設計

- 採用 Gleason 參數齒輪設計軟體，得到最佳化接觸面積的齒印參數，保證了最高扭矩以及最小噪音。

Optimized Design

- Use Gleason's design software to design new spiral bevel gears. Through the ideal gear contact pattern for application, achieve high permissible output torque.



筒夾式連結機構

- 輸入端與馬達的連結採用筒夾式的鎖緊機構，並經動平衡分析，以確保在高輸入轉速下結合界面的同心度和平衡度，及零背隙的動力傳遞。

Collet Locking Mechanism

- The input-end and the motor are coupled through a collet locking mechanism. It has passed dynamical balance analysis to assure concentricity and balance on the connection and no backlash for power transmission while running at high speed.

Characteristic of HY Series

HY 系列產品特性

HY

單段減速機 1-Stage

規格 Model No.	代號	單位 Unit	速比 Ratio	55	75	90	115	130	140	160	190
額定輸出扭矩 / Rated Output Torque (Nominal output torque)	T_{2N}	Nm	5	35	70	140	260	430	720	1,100	1,440
			10	30	60	117	220	365	615	957	1,230
			15	25	50	95	180	300	510	815	1,020
最大加速扭矩 / Max. Acceleration Torque	T_{2B}	Nm	5~15	1.5 倍額定輸出扭矩 1.5 Times of Rated Output Torque							
最大輸出扭矩 / Max. Output Torque 急停扭矩 / Emergency Stop Torque	T_{2NOT}	Nm	5~15	3 倍額定輸出扭矩 3 Times of Rated Output Torque							
額定輸入轉速 / Rated Input Speed	n_{1N}	rpm	5~15	3,000	3,000	3,000	3,000	2,500	2,500	2,000	2,000
最大輸入轉速 / Max. Input Speed	n_{1B}	rpm	5~15	6,000	6,000	6,000	6,000	5,000	5,000	4,000	4,000
背隙 / Backlash	J_t	arcmin	P0	-	-	≤ 3	≤ 3	≤ 3	≤ 3	≤ 3	≤ 3
			P1	≤ 6	≤ 6	≤ 6	≤ 6	≤ 6	≤ 6	≤ 6	≤ 6
			P2	≤ 9	≤ 9	≤ 9	≤ 9	≤ 9	≤ 9	≤ 9	≤ 9
容許徑向力 / Max. Radial Force 滾珠軸承 Ball Bearing	F_{2rB}	N	5~15	1,495	2,366	2,691	4,797	5,837	7,020	9,490	12,337
容許軸向力 / Max. Axial Force 滾珠軸承 Ball Bearing	F_{2aB}	N	5~15	748	1,183	1,346	2,399	2,919	3,510	4,745	6,169
容許徑向力 / Max. Radial Force 滾錐軸承 Taper Bearing	F_{2rB}	N	5~15	-	-	5,523 5,000(P)	9,100	12,320	14,420	18,620	24,080
容許軸向力 / Max. Axial Force 滾錐軸承 Taper Bearing	F_{2aB}	N	5~15	-	-	2,762 2,500(P)	4,550	6,160	7,210	9,310	12,040
使用壽命 / Service Life	L_{H1}	hr	5~15	S5 周期運轉 : >30,000 (S1 連續運轉 : >15,000 hrs) S5 Cycle Operation: >30,000 (S1 Continuous Operation: >15,000 hrs)							
效 率 / Efficiency	η	%	5	≥ 96%							
			10~15	≥ 93%							
使用溫度 / Operating Temperature		°C	5~15	-10°C ~ +90°C							
潤 滑 / Lubrication			5~15	全合成潤滑油 Synthetic Oil							
噪 音 值 / Noise Level		dB	5~15	≤ 67	≤ 67	≤ 69	≤ 69	≤ 71	≤ 71	≤ 72	≤ 72

註：(P) 螺桿式 NOTE: (P) Ball Screw

轉動慣量 Mass Moments of Inertia (kgcm²)

速比 Ratio	55	75	90	115	130	140	160	190
5	0.23	0.58	1.41	4.00	7.12	13.53	24.76	44.29
10	0.15	0.38	1.00	2.46	4.27	7.38	12.47	21.43
15	0.13	0.34	0.81	2.07	3.45	5.76	9.23	15.53

Characteristic of HY Series

HY 系列產品特性

雙段減速機 2-Stage

規格 Model No.	代號	單位 Unit	速比 Ratio	55	75	90	115	130	140	160	190
額定輸出扭矩 / Rated Output Torque (Nominal output torque)	T_{2N}	Nm	25, 50	35	70	140	260	430	720	1,100	1,440
			100	30	60	117	220	365	615	957	1,230
			75, 150	25	50	95	180	300	510	815	1,020
最大加速扭矩 / Max. Acceleration Torque	T_{2B}	Nm	25~150	1.5 倍額定輸出扭矩 1.5 Times of Rated Output Torque							
最大輸出扭矩 / Max. Output Torque 急停扭矩 / Emergency Stop Torque	T_{2NOT}	Nm	25~150	3 倍額定輸出扭矩 3 Times of Rated Output Torque							
額定輸入轉速 / Rated Input Speed	n_{1N}	rpm	25~150	3,000	3,000	3,000	3,000	3,000	3,000	2,000	3,000
最大輸入轉速 / Max. Input Speed	n_{1B}	rpm	25~150	6,000	6,000	6,000	6,000	5,000	5,000	4,000	4,000
背隙 / Backlash	J_t	arcmin	P0	-	-	≤ 4	≤ 4	≤ 4	≤ 4	≤ 4	≤ 4
			P1	≤ 7	≤ 7	≤ 7	≤ 7	≤ 7	≤ 7	≤ 7	≤ 7
			P2	≤ 10	≤ 10	≤ 10	≤ 10	≤ 10	≤ 10	≤ 10	≤ 10
容許徑向力 / Max. Radial Force 滾珠軸承 Ball Bearing	F_{2rB}	N	25~150	1,495	2,366	2,691	4,797	5,837	7,020	9,490	12,337
容許軸向力 / Max. Axial Force 滾珠軸承 Ball Bearing	F_{2aB}	N	25~150	748	1,183	1,346	2,399	2,919	3,510	4,745	61,69
容許徑向力 / Max. Radial Force 滾錐軸承 Taper Bearing	F_{2rB}	N	25~150	-	-	5,523 5,000(P)	9,100	12,320	14,420	18,620	24,080
容許軸向力 / Max. Axial Force 滾錐軸承 Taper Bearing	F_{2aB}	N	25~150	-	-	2,762 2,500(P)	4,550	6,160	7,210	9,310	12,040
使用壽命 / Service Life	L_{H1}	hr	25~150	S5 周期運轉 : >30,000 (S1 連續運轉 : >15,000 hrs) S5 Cycle Operation: >30,000 (S1 Continuous Operation: >15,000 hrs)							
效 率 / Efficiency	η	%	25, 50	≥ 92%							
			75, 100, 150	≥ 90%							
使用溫度 / Operating Temperature		°C	25~150	-10°C ~ +90°C							
潤 滑 / Lubrication			25~150	全合成潤滑油 Synthetic Oil							
噪 音 值 / Noise Level		dB	25~150	≤ 67	≤ 67	≤ 69	≤ 69	≤ 71	≤ 71	≤ 72	≤ 72

註 : (P) 螺桿式 NOTE: (P) Ball Screw

轉動慣量 Mass Moments of Inertia (kgcm²)

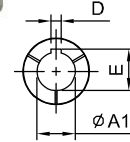
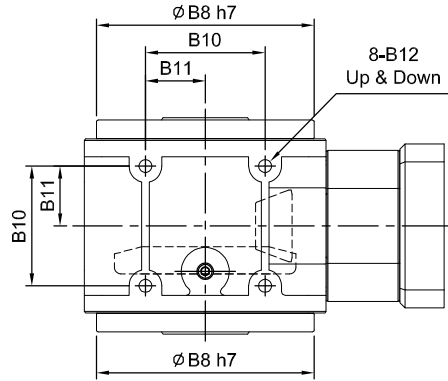
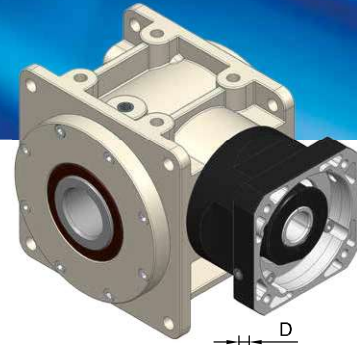
速比 Ratio	55	75	90	115	130	140	160	190
25	0.39	1.15	1.18	4.9	4.99	7.99	8.27	8.75
50	0.36	1.05	1.06	4.07	4.09	6.31	6.36	6.45
75	0.35	0.94	0.96	3.17	3.24	4.04	4.23	4.56
100	0.34	0.93	0.94	3.12	3.14	3.87	3.92	4.01
150	0.33	0.92	0.93	3.08	3.06	3.73	3.68	3.59

HY-FO series

RATIO : 5.10.15 (單段 1-Stage)

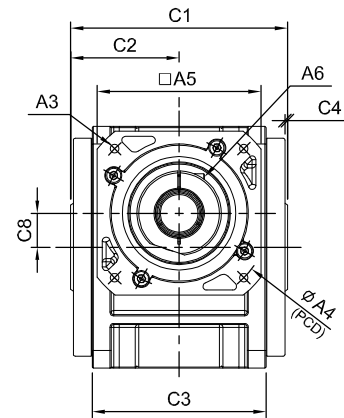
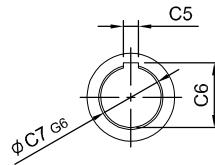
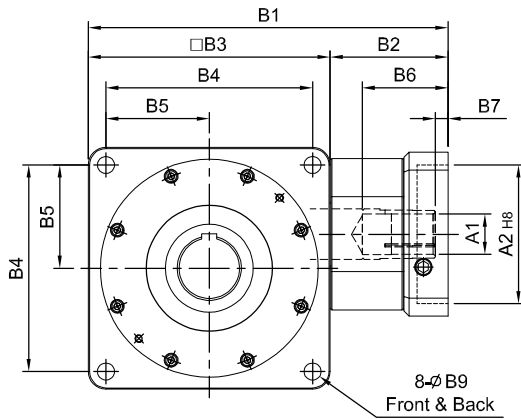
入力法蘭 - 出力中空軸

Input Flange - Hollow Output Shaft



(140#以上)

$\phi A1$	D	E
$\phi 32$	10	35.3
$\phi 35$	10	38.3
$\phi 38$	10	41.3
$\phi 42$	12	45.3
$\phi 48$	14	51.8
$\phi 55$	16	59.3



unit: mm

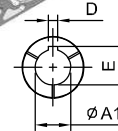
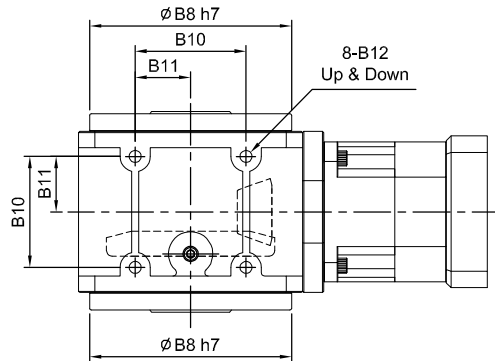
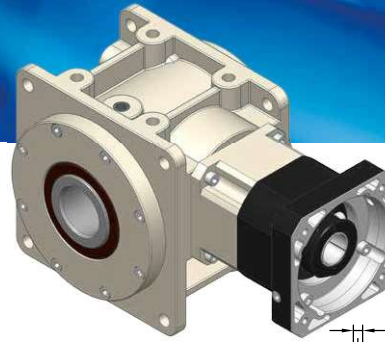
Model Code	55	75	90	115	130	140	160	190
	A	A1 8·11	A1 14	A1 14·19·24	A1 19·22·24	A1 24·28·32	A1 32·35·38	A1 32·35·38
	A2 30·40·50	A2 50·60·70	A2 50·70·80·95	A2 70·80·95·110	A2 95·110·130	A2 110·130·180	A2 110·130·180	A2 114.3·180·230·250
	A3 M3·M4·M5	A3 M4·M5·M6	A3 M5·M6	A3 M5·M6·M8	A3 M6·M8·M10	A3 M8·M10·M12	A3 M8·M10·M12	A3 M12·M16
	A4 46·60·63	A4 70·75·90	A4 70·90·100·115	A4 90·100·115·145	A4 115·145·165	A4 145·165·200	A4 145·165·200	A4 200·215·265·300
	A5 46·55	A5 64·70·80	A5 80·92·110	A5 92·110·130	A5 122·130·150	A5 146·150·190	A5 146·150·190	A5 182·200·250·265
	A6 M3 x P.05	A6 M5 x P0.8	A6 M5 x P0.8	A6 M6 x P1.0	A6 M8 x P1.25	A6 M10 x P1.5	A6 M10 x P1.5	A6 M10 x P1.5
B	B1 135	B1 172	B1 202·221	B1 241	B1 286	B1 333	B1 358	B1 417·419
	B2 45	B2 57	B2 62·81	B2 71	B2 94	B2 118	B2 118	B2 153·155
	B3 90	B3 115	B3 140	B3 170	B3 192	B3 215	B3 240	B3 264
	B4 78	B4 98	B4 118	B4 144	B4 164	B4 182	B4 206	B4 224
	B5 39	B5 49	B5 59	B5 72	B5 82	B5 91	B5 103	B5 112
	B6 28	B6 38	B6 49·68.5	B6 58	B6 69.5	B6 81.5	B6 81.5	B6 114.5·116.5
	B7 5	B7 6	B7 9·23.5	B7 8	B7 10	B7 10	B7 10	B7 11.5·13.5
	B8 84	B8 103	B8 128	B8 148	B8 173	B8 200	B8 227	B8 254
	B9 6.8	B9 9	B9 11	B9 11	B9 13.5	B9 15	B9 17.5	B9 17.5
	B10 44	B10 54	B10 66	B10 80	B10 95	B10 104	B10 120	B10 140
	B11 22	B11 27	B11 33	B11 40	B11 47.5	B11 52	B11 60	B11 70
	B12 M6 x P1.0	B12 M8 x P1.25	B12 M10 x P1.5	B12 M12 x P1.75	B12 M12 x P1.75	B12 M14 x P2.0	B12 M16 x P2.0	B12 M16 x P2.0
C	C1 88	C1 108	C1 132	C1 156	C1 172	C1 187	C1 212	C1 242
	C2 44	C2 54	C2 66	C2 78	C2 86	C2 93.5	C2 106	C2 121
	C3 60	C3 80	C3 100	C3 120	C3 138	C3 146	C3 166	C3 196
	C4 2	C4 2	C4 2	C4 2	C4 2	C4 2	C4 2	C4 2
	C5 6	C5 8	C5 8	C5 12	C5 14	C5 16	C5 18	C5 20
	C6 22.8	C6 28.3	C6 33.3	C6 43.3	C6 51.8	C6 59.3	C6 64.3	C6 74.9
	C7 20	C7 25	C7 30	C7 40	C7 48	C7 55	C7 60	C7 70
	C8 9	C8 14	C8 18	C8 23	C8 27	C8 32	C8 38	C8 42
Weight	重量 3.0	重量 4.6	重量 8.3	重量 12.3	重量 18.2	重量 26.6	重量 37.6	重量 59.5

HY-RO series

RATIO : 25.50.75.100.150 (雙段 2-Stage)

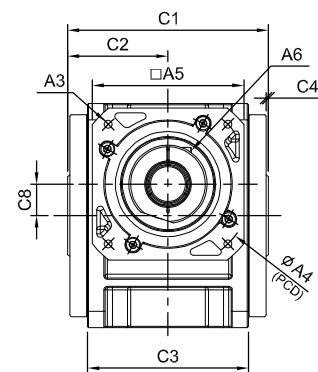
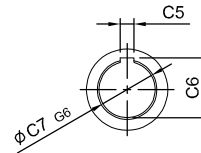
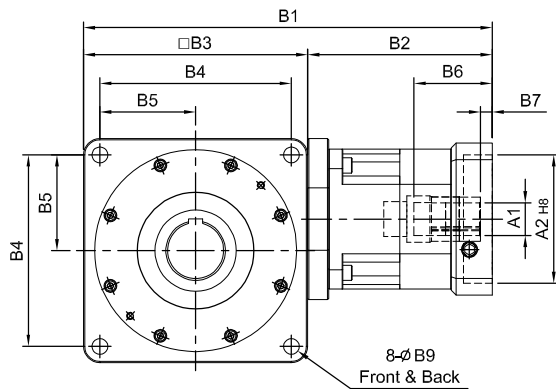
搭配行星減速機 - 出力中空軸

Fitted with Planetary Reducer - Hollow Output Shaft



(140#以上)

$\phi A1$	D	E
$\phi 28$	8	31.3
$\phi 32$	10	35.3
$\phi 35$	10	38.3
$\phi 38$	10	41.3
$\phi 42$	12	45.3
$\phi 48$	14	51.8
$\phi 55$	16	59.3



unit: mm

Model Code	Model								
	55	75	90	115	130	140	160	190	
A	A1	8·9·11·14	11·14·16·19	(14)·16·19	16·19·22·24	22·24·28·32·35	28·32·35·38	28·32·35·38	35·38·42·48·55
	A2	30·40·50	50·60·70	50·70·80·95	70·80·95·110	95·110·130	110·130·180	110·130·180	114.3·180·230·250
	A3	M3·M4·M5	M4·M5·M6	M5·M6	M5·M6·M8	M6·M8·M10	M8·M10·M12	M8·M10·M12	M12·M16
	A4	46·60·63	70·75·90	70·90·100·115	90·100·115·145	115·145·165	145·165·200	145·165·200	200·215·265·300
	A5	46·55	64·70·80	80·92·110	92·110·130	122·130·150	146·150·190	146·150·190	182·200·250·265
	A6	M3 x P.05	M5 x P0.8	M5 x P0.8	M6 x P1.0	M8 x P1.25	M10 x P1.5	M10 x P1.5	M10 x P1.5
B	B1	157	201·209	(224.5)·237	287	340·360	405	430	508·510
	B2	67	86·94	(84.5)·97	117	148·168	190	190	244·246
	B3	90	115	140	170	192	215	240	264
	B4	78	98	118	144	164	182	206	224
	B5	39	49	59	72	82	91	103	112
	B6	26	33.5·41.5	(33.5)·45.5	59	67·83	84.5	84.5	114.5·116.5
	B7	5	6	(6)·10	9	10·11	10	10	11.5·13.5
	B8	84	103	128	148	173	200	227	254
	B9	6.8	9	11	11	13.5	15	17.5	17.5
	B10	44	54	66	80	95	104	120	140
	B11	22	27	33	40	47.5	52	60	70
	B12	M6 x P1.0	M8 x P1.25	M10 x P1.5	M12 x P1.75	M12 x P1.75	M14 x P2.0	M16 x P2.0	M16 x P2.0
C	C1	88	108	132	156	172	187	212	242
	C2	44	54	66	78	86	93.5	106	121
	C3	60	80	100	120	138	146	166	196
	C4	2	2	2	2	2	2	2	2
	C5	6	8	8	12	14	16	18	20
	C6	22.8	28.3	33.3	43.3	51.8	59.3	64.3	74.9
	C7	20	25	30	40	48	55	60	70
	C8	9	14	18	23	27	32	38	42
Weight	重量	3.5	5.8	10.0	16.0	26.8	41.2	52.1	86.1

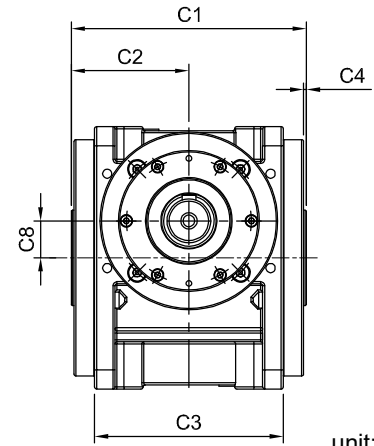
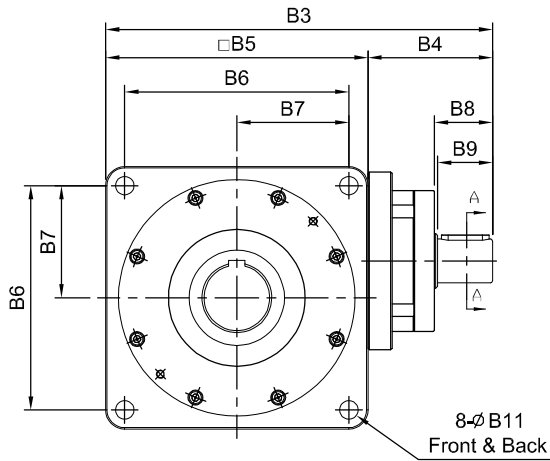
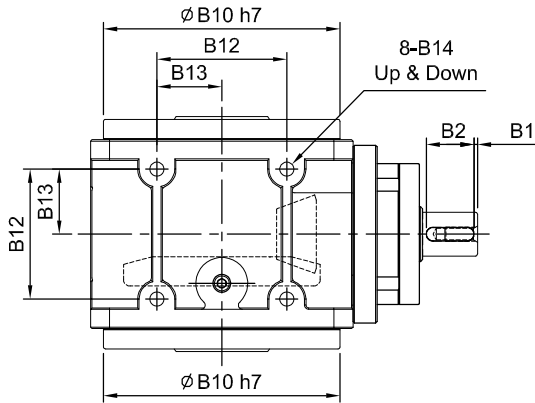
HY-DO series

RATIO : 5.10.15 (單段 1-Stage)



單入力軸心 - 出力中空軸

Single Input Shaft - Hollow Output Shaft



unit: mm

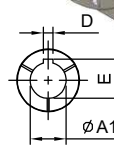
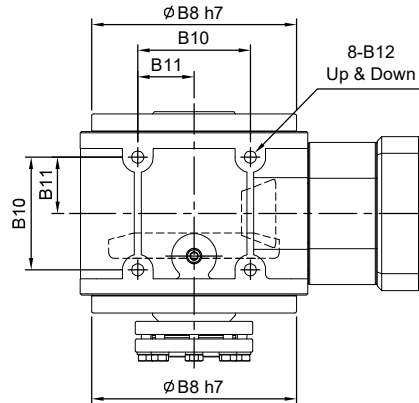
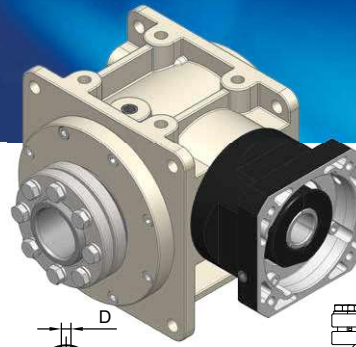
Model Code	55	75	90	115	130	140	160	190
	A	A1 14	A1 19	A1 24	A1 28	A1 32	A1 32	A1 38
	A2 5	A2 6	A2 8	A2 8	A2 10	A2 10	A2 12	A2 12
	A3 16	A3 21.5	A3 27	A3 31	A3 35	A3 35	A3 41	A3 43
	A4 M5 x P0.8	A4 M6 x P1.0	A4 M8 x P1.25	A4 M10 x P1.5	A4 M10 x P1.5	A4 M10 x P1.5	A4 M12 x P1.75	A4 M12 x P1.75
B	B1 2.5	B1 2.5	B1 2.5	B1 2.5	B1 5	B1 5	B1 5	B1 5
	B2 20	B2 25	B2 35	B2 35	B2 40	B2 40	B2 50	B2 50
	B3 147	B3 181	B3 218	B3 260	B3 293	B3 315	B3 367	B3 403
	B4 57	B4 66	B4 78	B4 90	B4 101	B4 100	B4 127	B4 139
	B5 90	B5 115	B5 140	B5 170	B5 192	B5 215	B5 240	B5 264
	B6 78	B6 98	B6 118	B6 144	B6 164	B6 182	B6 206	B6 224
	B7 39	B7 49	B7 59	B7 72	B7 82	B7 91	B7 103	B7 112
	B8 27	B8 32	B8 42.5	B8 42.5	B8 52.5	B8 51.5	B8 63	B8 63.5
	B9 25	B9 30	B9 40	B9 40	B9 50	B9 50	B9 60	B9 60
	B10 84	B10 103	B10 128	B10 148	B10 173	B10 200	B10 227	B10 254
	B11 6.8	B11 9	B11 11	B11 11	B11 13.5	B11 15	B11 17.5	B11 17.5
	B12 44	B12 54	B12 66	B12 80	B12 95	B12 104	B12 120	B12 140
	B13 22	B13 27	B13 33	B13 40	B13 47.5	B13 52	B13 60	B13 70
	B14 M6 x P1.0	B14 M8 x P1.25	B14 M10 x P1.5	B14 M12 x P1.75	B14 M12 x P1.75	B14 M14 x P2.0	B14 M16 x P2.0	B14 M16 x P2.0
C	C1 88	C1 108	C1 132	C1 156	C1 172	C1 187	C1 212	C1 242
	C2 44	C2 54	C2 66	C2 78	C2 86	C2 93.5	C2 106	C2 121
	C3 60	C3 80	C3 100	C3 120	C3 138	C3 146	C3 166	C3 196
	C4 2	C4 2	C4 2	C4 2	C4 2	C4 2	C4 2	C4 2
	C5 6	C5 8	C5 8	C5 12	C5 14	C5 16	C5 18	C5 20
	C6 22.8	C6 28.3	C6 33.3	C6 43.3	C6 51.8	C6 59.3	C6 64.3	C6 74.9
	C7 20	C7 25	C7 30	C7 40	C7 48	C7 55	C7 60	C7 70
	C8 9	C8 14	C8 18	C8 23	C8 27	C8 32	C8 38	C8 42
Weight	重量 2.9	重量 4.6	重量 8.1	重量 11.0	重量 18.7	重量 25.9	重量 36.8	重量 56.1

HY-FN series

RATIO : 5.10.15 (單段 1-Stage)

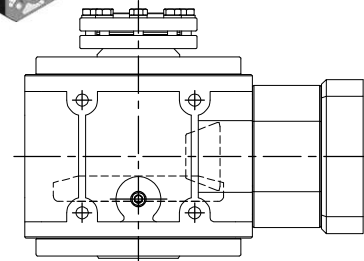
入力法蘭 - 單邊免鍵軸套

Input Flange - Single Clamping

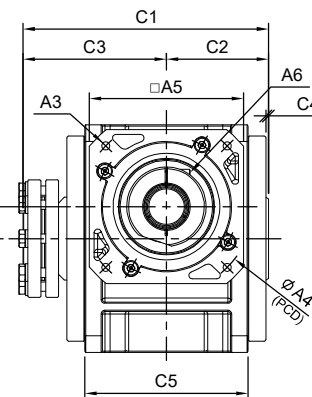
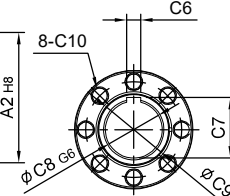
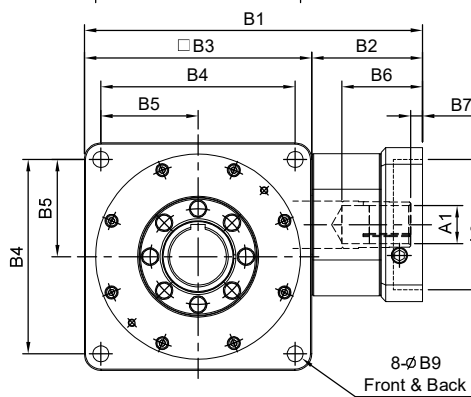


(140#以上)

$\phi A1$	D	E
$\phi 32$	10	35.3
$\phi 35$	10	38.3
$\phi 38$	10	41.3
$\phi 42$	12	45.3
$\phi 48$	14	51.8
$\phi 55$	16	59.3



R 軸
Shaft Direction



unit: mm

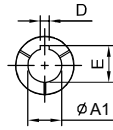
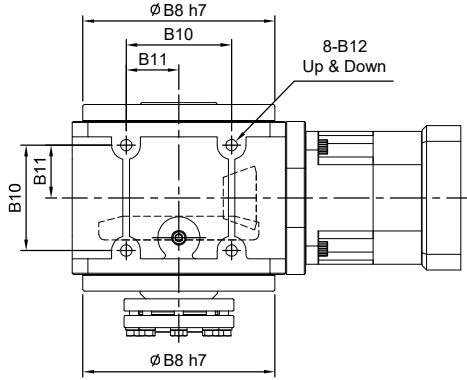
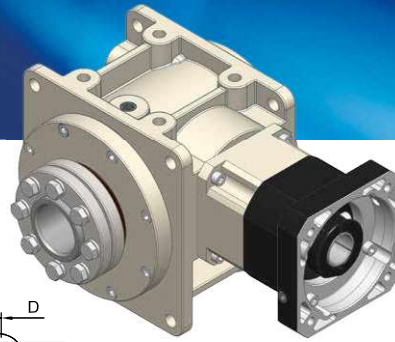
Model Code	55	75	90	115	130	140	160	190	
A	A1	8 · 11	14	14 · 19 · 24	19 · 22 · 24	24 · 28 · 32	32 · 35 · 38	32 · 35 · 38	42 · 48 · 55
	A2	30 · 40 · 50	50 · 60 · 70	50 · 70 · 80 · 95	70 · 80 · 95 · 110	95 · 110 · 130	110 · 130 · 180	110 · 130 · 180	114.3 · 180 · 230 · 250
	A3	M3 · M4 · M5	M4 · M5 · M6	M5 · M6	M5 · M6 · M8	M6 · M8 · M10	M8 · M10 · M12	M8 · M10 · M12	M12 · M16
	A4	46 · 60 · 63	70 · 75 · 90	70 · 90 · 100 · 115	90 · 100 · 115 · 145	115 · 145 · 165	145 · 165 · 200	145 · 165 · 200	200 · 215 · 265 · 300
	A5	46 · 55	64 · 70 · 80	80 · 92 · 110	92 · 110 · 130	122 · 130 · 150	146 · 150 · 190	146 · 150 · 190	182 · 200 · 250 · 265
	A6	M3 x P.05	M5 x P0.8	M5 x P0.8	M6 x P1.0	M8 x P1.25	M10 x P1.5	M10 x P1.5	M10 x P1.5
B	B1	135	172	202 · 221	241	286	333	358	417 · 419
	B2	45	57	62 · 81	71	94	118	118	153 · 155
	B3	90	115	140	170	192	215	240	264
	B4	78	98	118	144	164	182	206	224
	B5	39	49	59	72	82	91	103	112
	B6	28	38	49 · 68.5	58	69.5	81.5	81.5	114.5 · 116.5
	B7	5	6	9 · 23.5	8	10	10	10	11.5 · 13.5
	B8	84	103	128	148	173	200	227	254
	B9	6.8	9	11	11	13.5	15	17.5	17.5
	B10	44	54	66	80	95	104	120	140
	B11	22	27	33	40	47.5	52	60	70
	B12	M6 x P1.0	M8 x P1.25	M10 x P1.5	M12 x P1.75	M12 x P1.75	M14 x P2.0	M16 x P2.0	M16 x P2.0
C	C1	109	134	160	189	207	224	249	281
	C2	44	54	66	78	86	93.5	106	121
	C3	65	80	94	111	121	130.5	143	160
	C4	2	2	2	2	2	2	2	2
	C5	60	80	100	120	138	146	166	196
	C6	6	8	8	12	14	16	18	20
	C7	22.8	28.3	33.3	43.3	51.8	59.3	64.3	74.9
	C8	20	25	30	40	48	55	60	70
	C9	28	34	44	52	60	73	73	83
	C10	M6	M6	M6	M8	M8	M8	M8	M10
	C11	9	14	18	23	27	32	38	42
Weight 重量	3.2	5.0	8.7	13.0	19.3	27.4	39.4	61.7	

HY-RN series

RATIO : 25.50.75.100.150 (雙段 2-Stage)

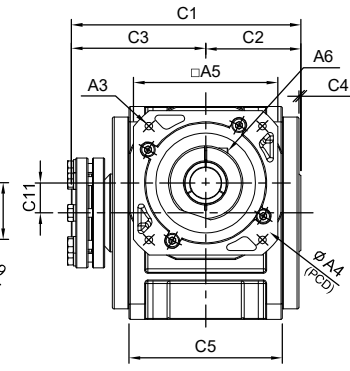
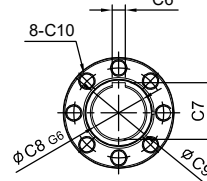
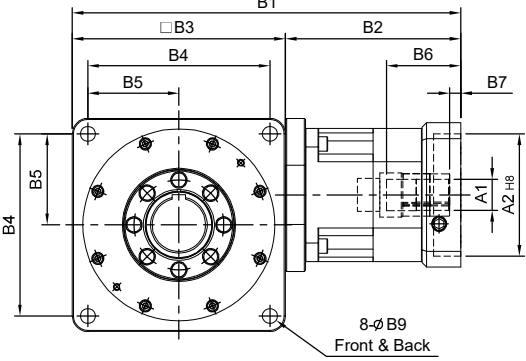
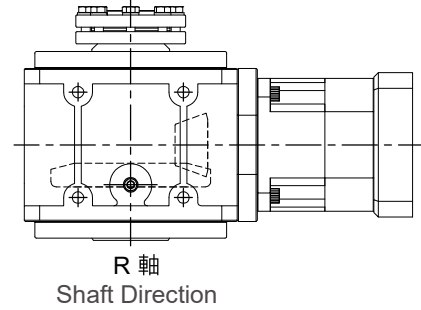
搭配行星減速機 - 單邊免鍵軸套

Fitted with Planetary Reducer - Single Clamping



(140#以上)

ØA1	D	E
Ø28	8	31.3
Ø32	10	35.3
Ø35	10	38.3
Ø38	10	41.3
Ø42	12	45.3
Ø48	14	51.8
Ø55	16	59.3



unit: mm

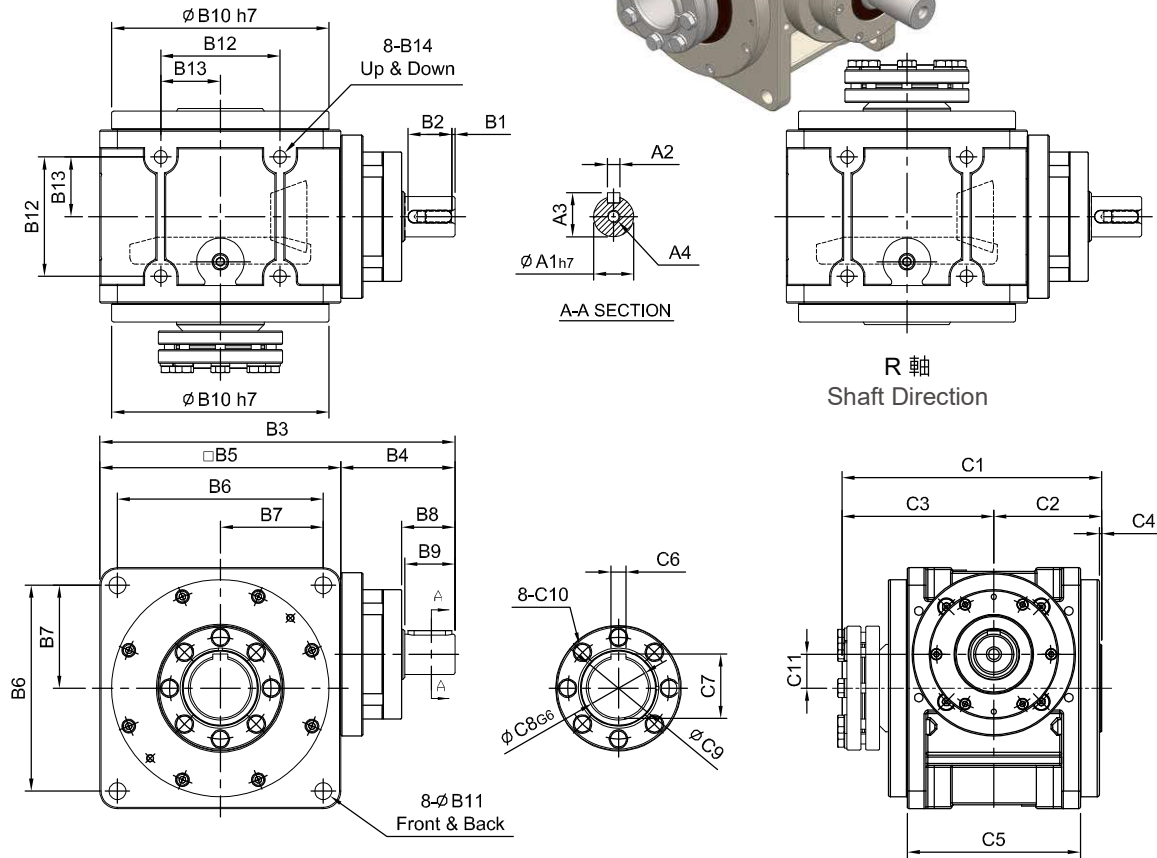
Model Code	55	75	90	115	130	140	160	190	
A	A1	8 · 9 · 11 · 14	11 · 14 · 16 · 19	(14) · 16 · 19	16 · 19 · 22 · 24	22 · 24 · 28 · 32 · 35	28 · 32 · 35 · 38	28 · 32 · 35 · 38	35 · 38 · 42 · 48 · 55
	A2	30 · 40 · 50	50 · 60 · 70	50 · 70 · 80 · 95	70 · 80 · 95 · 110	95 · 110 · 130	110 · 130 · 180	110 · 130 · 180	114.3 · 180 · 230 · 250
	A3	M3 · M4 · M5	M4 · M5 · M6	M5 · M6	M5 · M6 · M8	M6 · M8 · M10	M8 · M10 · M12	M8 · M10 · M12	M12 · M16
	A4	46 · 60 · 63	70 · 75 · 90	70 · 90 · 100 · 115	90 · 100 · 115 · 145	115 · 145 · 165	145 · 165 · 200	145 · 165 · 200	200 · 215 · 265 · 300
	A5	46 · 55	64 · 70 · 80	80 · 92 · 110	92 · 110 · 130	122 · 130 · 150	146 · 150 · 190	146 · 150 · 190	182 · 200 · 250 · 265
	A6	M3 x P.05	M5 x P0.8	M5 x P0.8	M6 x P1.0	M8 x P1.25	M10 x P1.5	M10 x P1.5	M10 x P1.5
B	B1	157	201 · 209	(224.5) · 237	287	340 · 360	405	430	508 · 510
	B2	67	86 · 94	(84.5) · 97	117	148 · 168	190	190	244 · 246
	B3	90	115	140	170	192	215	240	264
	B4	78	98	118	144	164	182	206	224
	B5	39	49	59	72	82	91	103	112
	B6	26	33.5 · 41.5	(33.5) · 45.5	59	67 · 83	84.5	84.5	114.5 · 116.5
	B7	5	6	(6) · 10	9	10 · 11	10	10	11.5 · 13.5
	B8	84	103	128	148	173	200	227	254
	B9	6.8	9	11	11	13.5	15	17.5	17.5
	B10	44	54	66	80	95	104	120	140
	B11	22	27	33	40	47.5	52	60	70
	B12	M6 x P1.0	M8 x P1.25	M10 x P1.5	M12 x P1.75	M12 x P1.75	M14 x P2.0	M16 x P2.0	M16 x P2.0
C	C1	109	134	160	189	207	224	249	281
	C2	44	54	66	78	86	93.5	106	121
	C3	65	80	94	111	121	130.5	143	160
	C4	2	2	2	2	2	2	2	2
	C5	60	80	100	120	138	146	166	196
	C6	6	8	8	12	14	16	18	20
	C7	22.8	28.3	33.3	43.3	51.8	59.3	64.3	74.9
	C8	20	25	30	40	48	55	60	70
	C9	28	34	44	52	60	73	73	83
	C10	M6	M6	M6	M8	M8	M8	M8	M10
	C11	9	14	18	23	27	32	38	42
Weight	重量	3.8	6.2	10.5	16.7	28.0	41.9	53.9	88.4

HY-DN series

RATIO : 5.10.15 (單段 1-Stage)

單入力軸心 - 單邊免鍵軸套

Single Input Shaft - Single Clamping

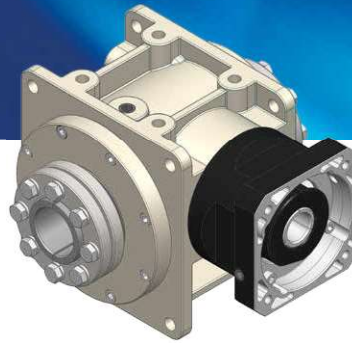


unit: mm

Model Code	55	75	90	115	130	140	160	190
	A							
A1	14	19	24	28	32	32	38	40
A2	5	6	8	8	10	10	12	12
A3	16	21.5	27	31	35	35	41	43
A4	M5 x P0.8	M6 x P1.0	M8 x P1.25	M10 x P1.5	M10 x P1.5	M10 x P1.5	M12 x P1.75	M12 x P1.75
B								
B1	2.5	2.5	2.5	2.5	5	5	5	5
B2	20	25	35	35	40	40	50	50
B3	147	181	218	260	293	315	367	403
B4	57	66	78	90	101	100	127	139
B5	90	115	140	170	192	215	240	264
B6	78	98	118	144	164	182	206	224
B7	39	49	59	72	82	91	103	112
B8	27	32	42.5	42.5	52.5	51.5	63	63.5
B9	25	30	40	40	50	50	60	60
B10	84	103	128	148	173	200	227	254
B11	6.8	9	11	11	13.5	15	17.5	17.5
B12	44	54	66	80	95	104	120	140
B13	22	27	33	40	47.5	52	60	70
B14	M6 x P1.0	M8 x P1.25	M10 x P1.5	M12 x P1.75	M12 x P1.75	M14 x P2.0	M16 x P2.0	M16 x P2.0
C								
C1	109	134	160	189	207	224	249	281
C2	44	54	66	78	86	93.5	106	121
C3	65	80	94	111	121	130.5	143	160
C4	2	2	2	2	2	2	2	2
C5	60	80	100	120	138	146	166	196
C6	6	8	8	12	14	16	18	20
C7	22.8	28.3	33.3	43.3	51.8	59.3	64.3	74.9
C8	20	25	30	40	48	55	60	70
C9	28	34	44	52	60	73	73	83
C10	M6	M6	M6	M8	M8	M8	M8	M10
C11	9	14	18	23	27	32	38	42
Weight 重量	3.1	5.0	8.6	11.6	19.9	27.8	38.6	58.4

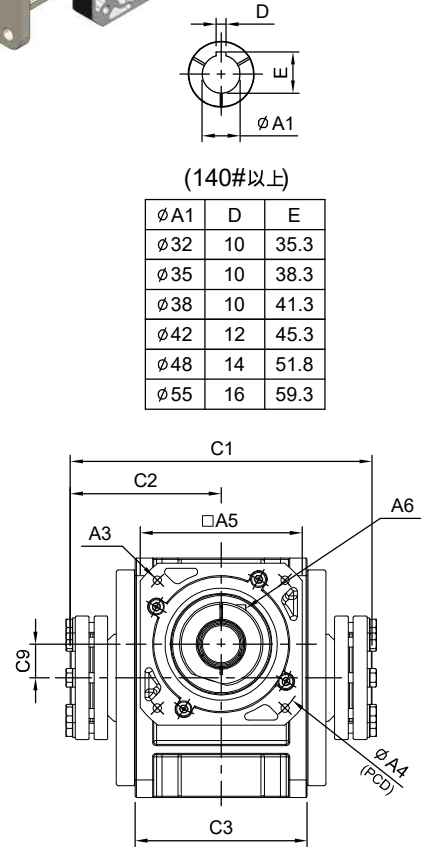
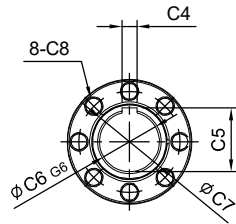
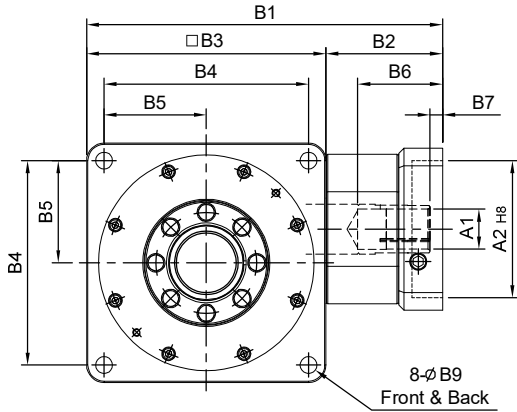
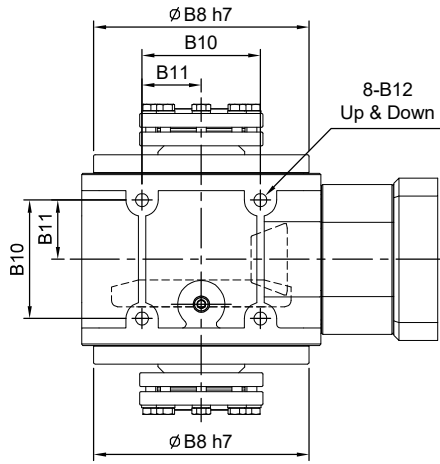
HY-FM series

RATIO : 5.10.15 (單段 1-Stage)



入力法蘭 - 雙邊免鍵軸套

Input Flange - Double Clamping



(140#以上)

φA1	D	E
φ32	10	35.3
φ35	10	38.3
φ38	10	41.3
φ42	12	45.3
φ48	14	51.8
φ55	16	59.3

unit: mm

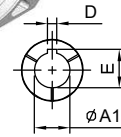
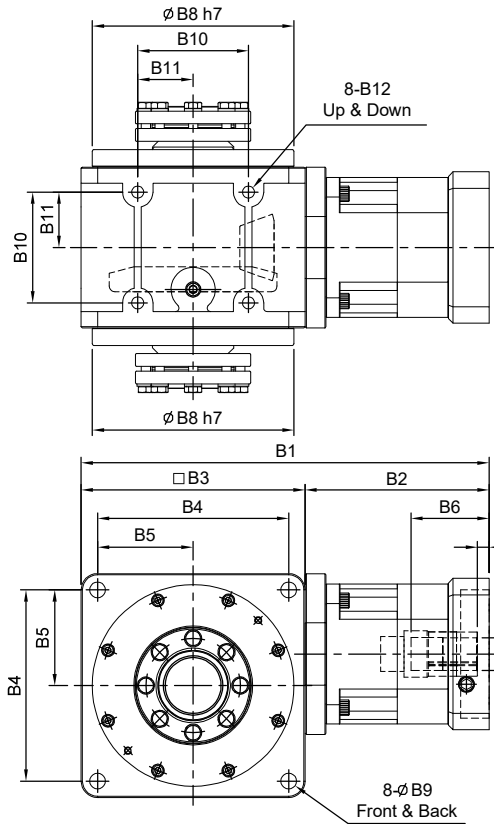
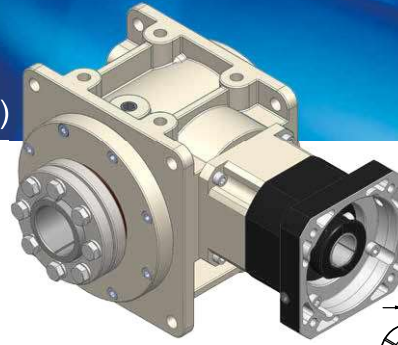
Model Code	55	75	90	115	130	140	160	190	
A	A1	8 · 11	14	14 · 19 · 24	19 · 22 · 24	24 · 28 · 32	32 · 35 · 38	32 · 35 · 38	42 · 48 · 55
	A2	30 · 40 · 50	50 · 60 · 70	50 · 70 · 80 · 95	70 · 80 · 95 · 110	95 · 110 · 130	110 · 130 · 180	110 · 130 · 180	114.3 · 180 · 230 · 250
	A3	M3 · M4 · M5	M4 · M5 · M6	M5 · M6	M5 · M6 · M8	M6 · M8 · M10	M8 · M10 · M12	M8 · M10 · M12	M12 · M16
	A4	46 · 60 · 63	70 · 75 · 90	70 · 90 · 100 · 115	90 · 100 · 115 · 145	115 · 145 · 165	145 · 165 · 200	145 · 165 · 200	200 · 215 · 265 · 300
	A5	46 · 55	64 · 70 · 80	80 · 92 · 110	92 · 110 · 130	122 · 130 · 150	146 · 150 · 190	146 · 150 · 190	182 · 200 · 250 · 265
	A6	M3 x P.05	M5 x P0.8	M5 x P0.8	M6 x P1.0	M8 x P1.25	M10 x P1.5	M10 x P1.5	M10 x P1.5
B	B1	135	172	202 · 221	241	286	333	358	417 · 419
	B2	45	57	62 · 81	71	94	118	118	153 · 155
	B3	90	115	140	170	192	215	240	264
	B4	78	98	118	144	164	182	206	224
	B5	39	49	59	72	82	91	103	112
	B6	28	38	49 · 68.5	58	69.5	81.5	81.5	114.5 · 116.5
	B7	5	6	9 · 23.5	8	10	10	10	11.5 · 13.5
	B8	84	103	128	148	173	200	227	254
	B9	6.8	9	11	11	13.5	15	17.5	17.5
	B10	44	54	66	80	95	104	120	140
	B11	22	27	33	40	47.5	52	60	70
	B12	M6 x P1.0	M8 x P1.25	M10 x P1.5	M12 x P1.75	M12 x P1.75	M14 x P2.0	M16 x P2.0	M16 x P2.0
C	C1	130	160	188	222	242	261	286	320
	C2	65	80	94	111	121	130.5	143	160
	C3	60	80	100	120	138	146	166	196
	C4	-	-	-	-	14	16	18	20
	C5	-	-	-	-	51.8	59.3	64.3	74.9
	C6	20	25	30	40	48	55	60	70
	C7	28	34	44	52	60	73	73	83
	C8	M6	M6	M6	M8	M8	M8	M8	M10
	C9	9	14	18	23	27	32	38	42
Weight	重量	3.5	5.3	9.2	13.7	20.5	28.6	41.0	64.0

HY-RM series

RATIO : 25.50.75.100.150 (雙段 2-Stage)

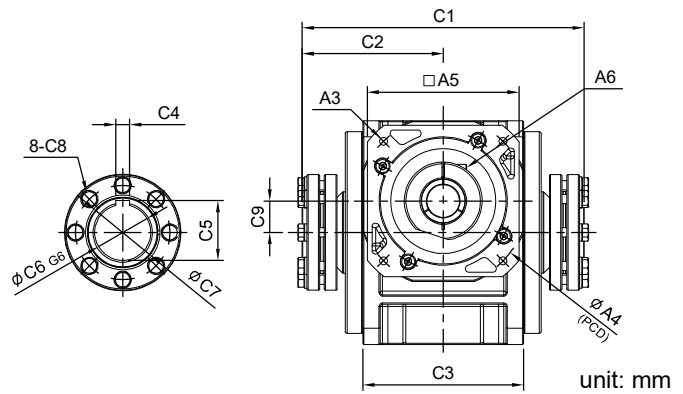
搭配行星減速機 - 雙邊免鍵軸套

Fitted with Planetary Reducer - Double Clamping



(140#以上)

φA1	D	E
φ28	8	31.3
φ32	10	35.3
φ35	10	38.3
φ38	10	41.3
φ42	12	45.3
φ48	14	51.8
φ55	16	59.3



unit: mm

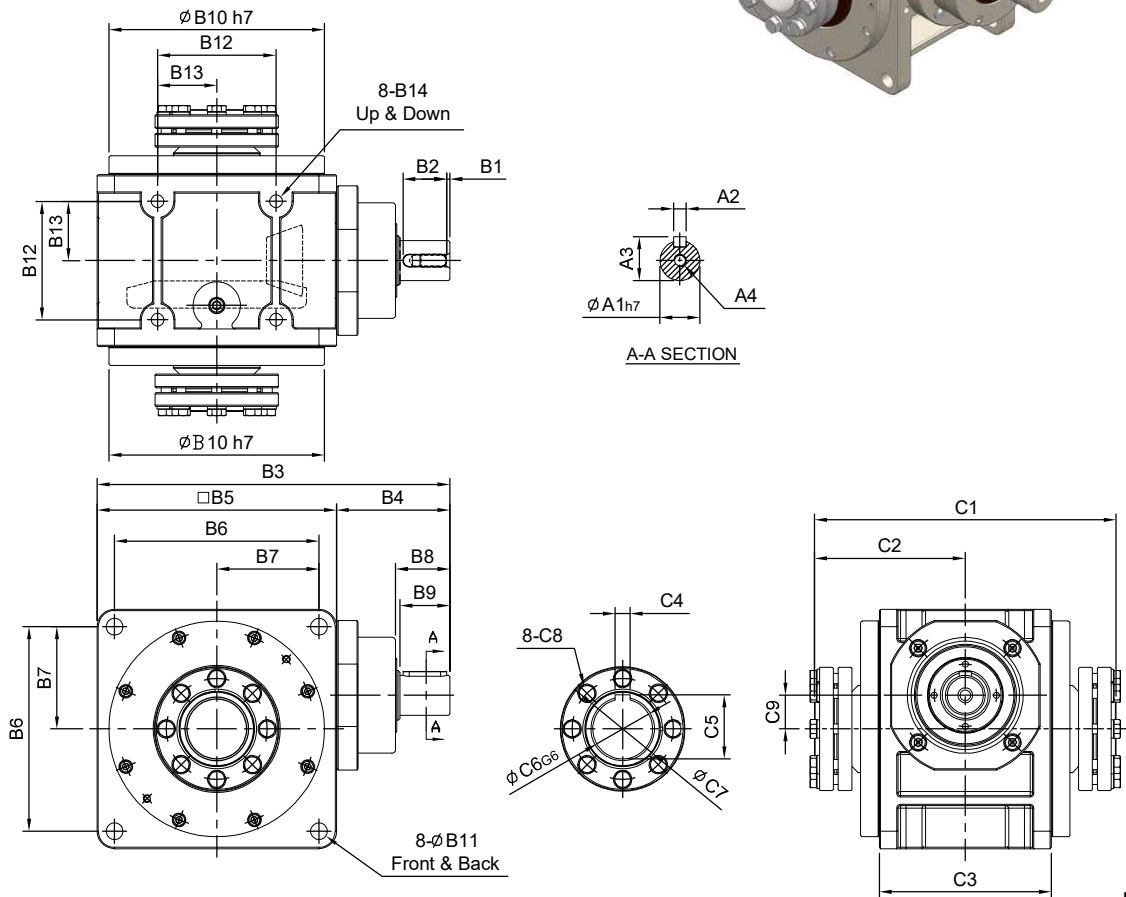
Model Code	55	75	90	115	130	140	160	190	
A	A1	8 · 9 · 11 · 14	11 · 14 · 16 · 19	(14) · 16 · 19	16 · 19 · 22 · 24	22 · 24 · 28 · 32 · 35	28 · 32 · 35 · 38	28 · 32 · 35 · 38	35 · 38 · 42 · 48 · 55
	A2	30 · 40 · 50	50 · 60 · 70	50 · 70 · 80 · 95	70 · 80 · 95 · 110	95 · 110 · 130	110 · 130 · 180	110 · 130 · 180	114.3 · 180 · 230 · 250
	A3	M3 · M4 · M5	M4 · M5 · M6	M5 · M6	M5 · M6 · M8	M6 · M8 · M10	M8 · M10 · M12	M8 · M10 · M12	M12 · M16
	A4	46 · 60 · 63	70 · 75 · 90	70 · 90 · 100 · 115	90 · 100 · 115 · 145	115 · 145 · 165	145 · 165 · 200	145 · 165 · 200	200 · 215 · 265 · 300
	A5	46 · 55	64 · 70 · 80	80 · 92 · 110	92 · 110 · 130	122 · 130 · 150	146 · 150 · 190	146 · 150 · 190	182 · 200 · 250 · 265
	A6	M3 x P.05	M5 x P0.8	M5 x P0.8	M6 x P1.0	M8 x P1.25	M10 x P1.5	M10 x P1.5	M10 x P1.5
B	B1	157	201 · 209	(224.5) · 237	287	340 · 360	405	430	508 · 510
	B2	67	86 · 94	(84.5) · 97	117	148 · 168	190	190	244 · 246
	B3	90	115	140	170	192	215	240	264
	B4	78	98	118	144	164	182	206	224
	B5	39	49	59	72	82	91	103	112
	B6	26	33.5 · 41.5	(33.5) · 45.5	59	67 · 83	84.5	84.5	114.5 · 116.5
	B7	5	6	(6) · 10	9	10 · 11	10	10	11.5 · 13.5
	B8	84	103	128	148	173	200	227	254
	B9	6.8	9	11	11	13.5	15	17.5	17.5
	B10	44	54	66	80	95	104	120	140
	B11	22	27	33	40	47.5	52	60	70
	B12	M6 x P1.0	M8 x P1.25	M10 x P1.5	M12 x P1.75	M12 x P1.75	M14 x P2.0	M16 x P2.0	M16 x P2.0
C	C1	130	160	188	222	242	261	286	320
	C2	65	80	94	111	121	130.5	143	160
	C3	60	80	100	120	138	146	166	196
	C4	-	-	-	-	14	16	18	20
	C5	-	-	-	-	51.8	59.3	64.3	74.9
	C6	20	25	30	40	48	55	60	70
	C7	28	34	44	52	60	73	73	83
	C8	M6	M6	M6	M8	M8	M8	M8	M10
	C9	9	14	18	23	27	32	38	42
Weight	重量	4.1	6.6	11.0	17.4	29.1	43.1	55.6	90.7

HY-DM series

RATIO : 5.10.15 (單段 1-Stage)

單入力軸心 - 雙邊免鍵軸套

Single Input Shaft - Double Clamping

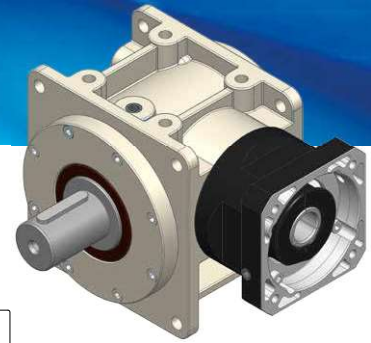


unit: mm

Model Code	55	75	90	115	130	140	160	190
A	A1	14	19	24	28	32	38	40
	A2	5	6	8	8	10	12	12
	A3	16	21.5	27	31	35	41	43
	A4	M5 x P0.8	M6 x P1.0	M8 x P1.25	M10 x P1.5	M10 x P1.5	M10 x P1.5	M12 x P1.75
B	B1	2.5	2.5	2.5	2.5	5	5	5
	B2	20	25	35	35	40	40	50
	B3	147	181	218	260	293	315	367
	B4	57	66	78	90	101	100	127
	B5	90	115	140	170	192	215	240
	B6	78	98	118	144	164	182	206
	B7	39	49	59	72	82	91	103
	B8	27	32	42.5	42.5	52.5	51.5	63
	B9	25	30	40	40	50	50	60
	B10	84	103	128	148	173	200	227
	B11	6.8	9	11	11	13.5	15	17.5
	B12	44	54	66	80	95	104	120
	B13	22	27	33	40	47.5	52	60
	B14	M6 x P1.0	M8 x P1.25	M10 x P1.5	M12 x P1.75	M12 x P1.75	M14 x P2.0	M16 x P2.0
C	C1	130	160	188	222	242	286	320
	C2	65	80	94	111	121	143	160
	C3	60	80	100	120	138	166	196
	C4	-	-	-	-	14	18	20
	C5	-	-	-	-	51.8	59.3	74.9
	C6	20	25	30	40	48	55	70
	C7	28	34	44	52	60	73	83
	C8	M6	M6	M6	M8	M8	M8	M8
	C9	9	14	18	23	27	32	42
Weight	重量	3.4	5.3	8.9	11.9	20.7	29.7	60.7

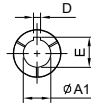
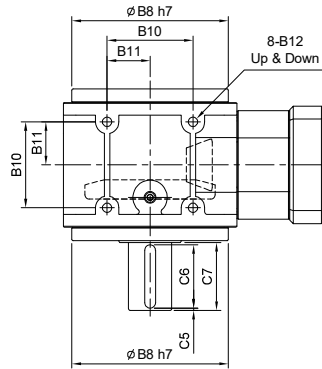
HY-FS series

RATIO : 5.10.15 (單段 1-Stage)



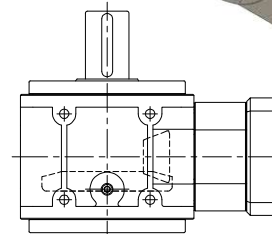
入力法蘭 - 單出力軸心

Input Flange - Single Output Shaft



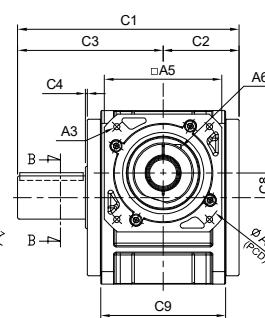
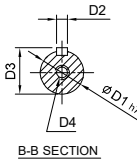
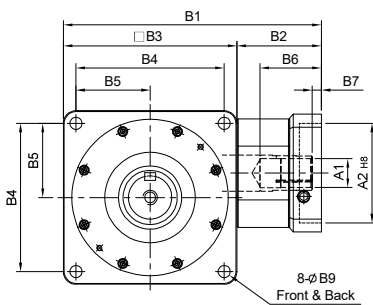
(140#以上)

$\phi A1$	D	E
$\phi 32$	10	35.3
$\phi 35$	10	38.3
$\phi 38$	10	41.3
$\phi 42$	12	45.3
$\phi 48$	14	51.8
$\phi 55$	16	59.3



R 軸

Shaft Direction



unit: mm

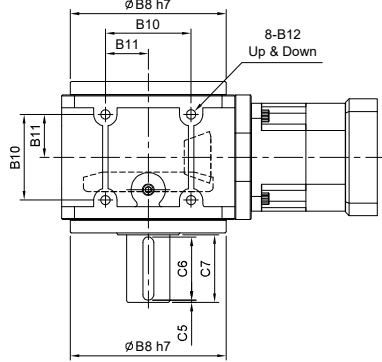
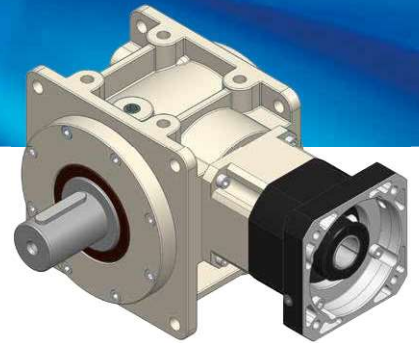
Model Code	55	75	90	115	130	140	160	190
	A	A1: 8 · 11	A2: 14	A3: 14 · 19 · 24	A4: 19 · 22 · 24	A5: 24 · 28 · 32	A6: 32 · 35 · 38	A7: 32 · 35 · 38
	A9: 30 · 40 · 50	A10: 50 · 60 · 70	A11: 50 · 70 · 80 · 95	A12: 70 · 80 · 95 · 110	A13: 95 · 110 · 130	A14: 110 · 130 · 180	A15: 110 · 130 · 180	A16: 114.3 · 180 · 230 · 250
	A17: M3 · M4 · M5	A18: M4 · M5 · M6	A19: M5 · M6	A20: M5 · M6 · M8	A21: M6 · M8 · M10	A22: M8 · M10 · M12	A23: M8 · M10 · M12	A24: M12 · M16
	A25: 46 · 60 · 63	A26: 70 · 75 · 90	A27: 70 · 90 · 100 · 115	A28: 90 · 100 · 115 · 145	A29: 115 · 145 · 165	A30: 145 · 165 · 200	A31: 145 · 165 · 200	A32: 200 · 215 · 265 · 300
	A33: 46 · 55	A34: 64 · 70 · 80	A35: 80 · 92 · 110	A36: 92 · 110 · 130	A37: 122 · 130 · 150	A38: 146 · 150 · 190	A39: 146 · 150 · 190	A40: 182 · 200 · 250 · 265
	A41: M3 x P.05	A42: M5 x P0.8	A43: M5 x P0.8	A44: M6 x P1.0	A45: M8 x P1.25	A46: M10 x P1.5	A47: M10 x P1.5	A48: M10 x P1.5
B	B1: 135	B2: 172	B3: 202 · 221	B4: 241	B5: 286	B6: 333	B7: 358	B8: 417 · 419
	B9: 45	B10: 57	B11: 62 · 81	B12: 71	B13: 94	B14: 118	B15: 118	B16: 153 · 155
	B17: 90	B18: 115	B19: 140	B20: 170	B21: 192	B22: 215	B23: 240	B24: 264
	B25: 78	B26: 98	B27: 118	B28: 144	B29: 164	B30: 182	B31: 206	B32: 224
	B33: 39	B34: 49	B35: 59	B36: 72	B37: 82	B38: 91	B39: 103	B40: 112
	B41: 28	B42: 38	B43: 49 · 68.5	B44: 58	B45: 69.5	B46: 81.5	B47: 81.5	B48: 114.5 · 116.5
	B49: 5	B50: 6	B51: 9 · 23.5	B52: 8	B53: 10	B54: 10	B55: 10	B56: 11.5 · 13.5
	B57: 84	B58: 103	B59: 128	B60: 148	B61: 173	B62: 200	B63: 227	B64: 254
	B65: 6.8	B66: 9	B67: 11	B68: 11	B69: 13.5	B70: 15	B71: 17.5	B72: 17.5
	B73: 44	B74: 54	B75: 66	B76: 80	B77: 95	B78: 104	B79: 120	B80: 140
	B81: 22	B82: 27	B83: 33	B84: 40	B85: 47.5	B86: 52	B87: 60	B88: 70
	B89: M6 x P1.0	B90: M8 x P1.25	B91: M10 x P1.5	B92: M12 x P1.75	B93: M12 x P1.75	B94: M14 x P2.0	B95: M16 x P2.0	B96: M16 x P2.0
C	C1: 121	C2: 146	C3: 180	C4: 214	C5: 245	C6: 275	C7: 310	C8: 350
	C9: 42	C10: 52	C11: 64	C12: 76	C13: 84	C14: 91.5	C15: 103	C16: 118
	C17: 79	C18: 94	C19: 120	C20: 138	C21: 161	C22: 183.5	C23: 206	C24: 231
	C25: 2	C26: 2	C27: 2	C28: 2	C29: 2	C30: 2	C31: 2	C32: 2
	C33: 5	C34: 5	C35: 5	C36: 5	C37: 5	C38: 5	C39: 5	C40: 5
	C41: 25	C42: 30	C43: 40	C44: 50	C45: 65	C46: 80	C47: 90	C48: 100
	C49: 35	C50: 40	C51: 50	C52: 60	C53: 75	C54: 90	C55: 100	C56: 110
	C57: 9	C58: 14	C59: 18	C60: 23	C61: 27	C62: 32	C63: 38	C64: 42
	C65: 60	C66: 80	C67: 100	C68: 120	C69: 138	C70: 146	C71: 166	C72: 196
D	D1: 20	D2: 24	D3: 32	D4: 40	D5: 48	D6: 55	D7: 60	D8: 70
	D9: 6	D10: 8	D11: 10	D12: 12	D13: 14	D14: 16	D15: 18	D16: 20
	D17: 22.5	D18: 27	D19: 35	D20: 43	D21: 51.5	D22: 59	D23: 64	D24: 74.5
	D25: M6 x P1.0	D26: M8 x P1.25	D27: M10 x P1.5	D28: M10 x P1.5	D29: M12 x P1.75	D30: M16 x P2.0	D31: M20 x P2.5	D32: M20 x P2.5
Weight	重量: 3.2	5.0	9.1	14.0	21.0	30.6	42.8	67.9

HY-RS series

RATIO : 25.50.75.100.150 (雙段 2-Stage)

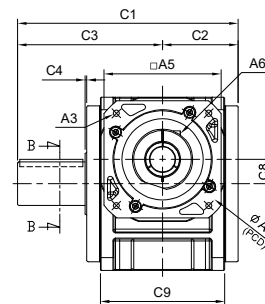
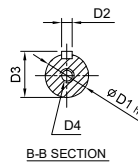
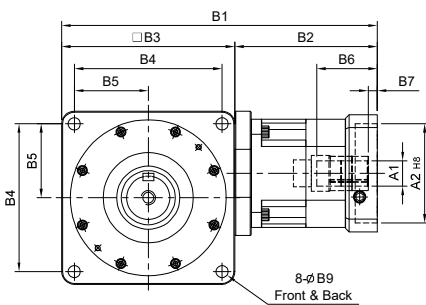
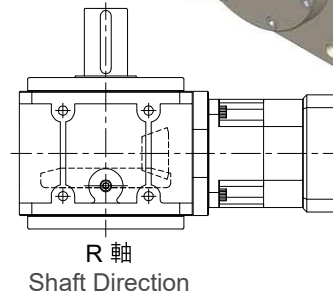
搭配行星減速機 - 單出力軸心

Fitted with Planetary Reducer - Single Output Shaft



(140#以上)

φA1	D	E
φ28	8	31.3
φ32	10	35.3
φ35	10	38.3
φ38	10	41.3
φ42	12	45.3
φ48	14	51.8
φ55	16	59.3

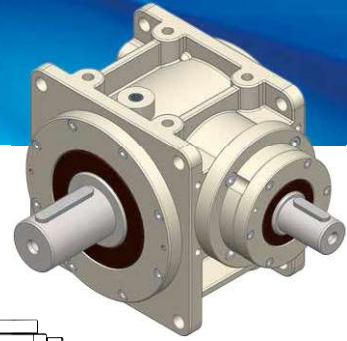


unit: mm

Model Code	55	75	90	115	130	140	160	190
	A	A1: 8·9·11·14 A2: 30·40·50 A3: M3·M4·M5 A4: 46·60·63 A5: 46·55 A6: M3 x P.05	A1: 11·14·16·19 A2: 50·60·70 A3: M4·M5·M6 A4: 70·75·90 A5: 64·70·80 A6: M5 x P.0.8	A1: (14)·16·19 A2: 50·70·80·95 A3: M5·M6 A4: 70·90·100·115 A5: 80·92·110 A6: M5 x P.0.8	A1: 16·19·22·24 A2: 70·80·95·110 A3: M5·M6·M8 A4: 90·100·115·145 A5: 92·110·130 A6: M6 x P.1.0	A1: 22·24·28·32·35 A2: 95·110·130 A3: M6·M8·M10 A4: 115·145·165 A5: 122·130·150 A6: M8 x P.1.25	A1: 28·32·35·38 A2: 110·130·180 A3: M8·M10·M12 A4: 145·165·200 A5: 146·150·190 A6: M10 x P.1.5	A1: 28·32·35·38 A2: 110·130·180 A3: M8·M10·M12 A4: 145·165·200 A5: 146·150·190 A6: M10 x P.1.5
B	B1: 157 B2: 67 B3: 90 B4: 78 B5: 39 B6: 26 B7: 5 B8: 84 B9: 6.8 B10: 44 B11: 22	B1: 201·209 B2: 86·94 B3: 115 B4: 98 B5: 49 B6: 33.5·41.5 B7: 6 B8: 103 B9: 9 B10: 54 B11: 27	B1: (224.5)·237 B2: (84.5)·97 B3: 140 B4: 118 B5: 59 B6: (33.5)·45.5 B7: (6)·10 B8: 128 B9: 11 B10: 66 B11: 33	B1: 287 B2: 117 B3: 170 B4: 144 B5: 72 B6: 59 B7: 9 B8: 148 B9: 11 B10: 80 B11: 40	B1: 340·360 B2: 148·168 B3: 192 B4: 164 B5: 82 B6: 67·83 B7: 10·11 B8: 173 B9: 13.5 B10: 95 B11: 47.5	B1: 405 B2: 190 B3: 215 B4: 182 B5: 91 B6: 84.5 B7: 10 B8: 200 B9: 15 B10: 104 B11: 52	B1: 430 B2: 190 B3: 240 B4: 206 B5: 103 B6: 84.5 B7: 10 B8: 227 B9: 17.5 B10: 120 B11: 60	B1: 508·510 B2: 244·246 B3: 264 B4: 224 B5: 112 B6: 114.5·116.5 B7: 11.5·13.5 B8: 254 B9: 17.5 B10: 140 B11: 70
C	C1: 121 C2: 42 C3: 79 C4: 2 C5: 5 C6: 25 C7: 35 C8: 9 C9: 60	C1: 146 C2: 52 C3: 94 C4: 2 C5: 5 C6: 30 C7: 40 C8: 14 C9: 80	C1: 180 C2: 64 C3: 120 C4: 2 C5: 5 C6: 40 C7: 50 C8: 18 C9: 100	C1: 214 C2: 76 C3: 138 C4: 2 C5: 5 C6: 50 C7: 60 C8: 23 C9: 120	C1: 245 C2: 84 C3: 161 C4: 2 C5: 5 C6: 65 C7: 75 C8: 27 C9: 138	C1: 275 C2: 91.5 C3: 183.5 C4: 2 C5: 5 C6: 80 C7: 90 C8: 32 C9: 146	C1: 310 C2: 103 C3: 206 C4: 2 C5: 5 C6: 90 C7: 100 C8: 38 C9: 166	C1: 350 C2: 118 C3: 231 C4: 2 C5: 5 C6: 100 C7: 110 C8: 42 C9: 196
D	D1: 20 D2: 6 D3: 22.5 D4: M6 x P.1.0	D1: 24 D2: 8 D3: 27 D4: M8 x P.1.25	D1: 32 D2: 10 D3: 35 D4: M10 x P.1.5	D1: 40 D2: 12 D3: 43 D4: M10 x P.1.5	D1: 48 D2: 14 D3: 51.5 D4: M12 x P.1.75	D1: 55 D2: 16 D3: 59 D4: M16 x P.2.0	D1: 60 D2: 18 D3: 64 D4: M20 x P.2.5	D1: 70 D2: 20 D3: 74.5 D4: M20 x P.2.5
Weight	3.8	6.3	10.9	17.7	29.6	45.2	57.4	94.6

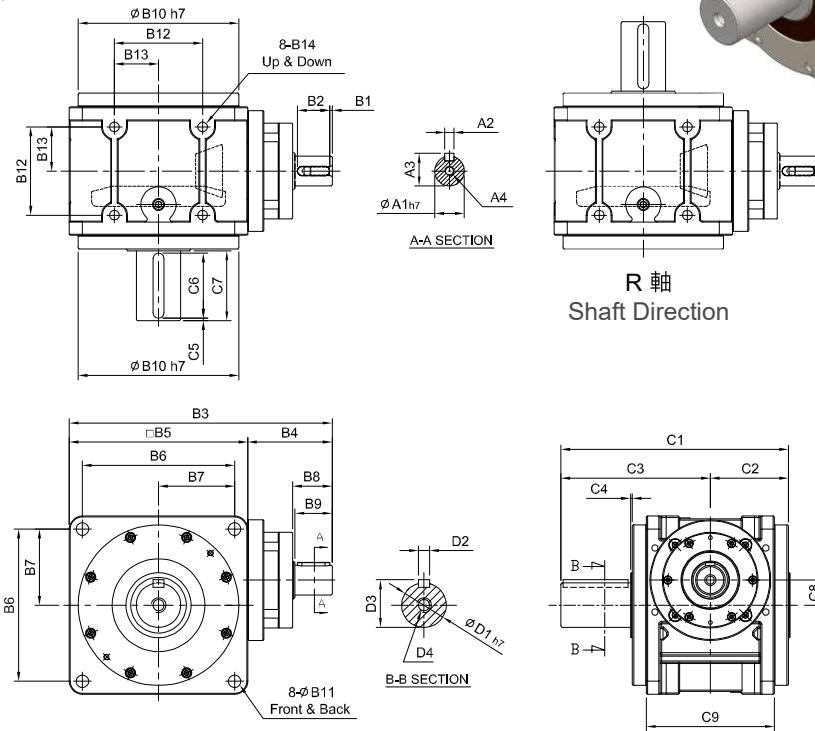
HY-DS series

RATIO : 5.10.15 (單段 1-Stage)



單入力軸心 - 單出力軸心

Single Input Shaft - Single Output Shaft



R 軸
Shaft Direction

unit: mm

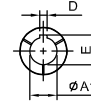
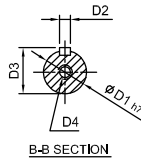
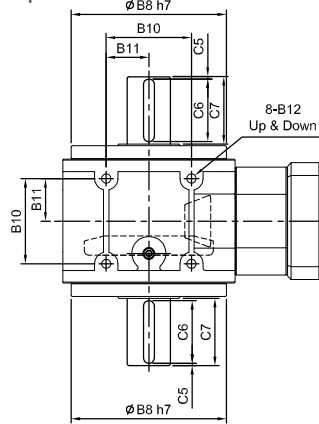
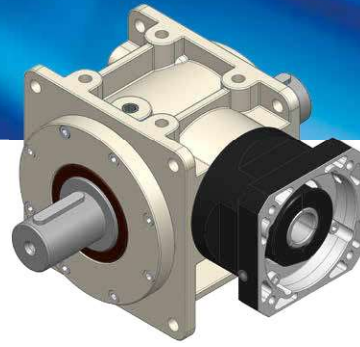
Model Code	55	75	90	115	130	140	160	190	
A	A1	14	19	24	28	32	38	40	
	A2	5	6	8	8	10	12	12	
	A3	16	21.5	27	31	35	41	43	
	A4	M5 x P0.8	M6 x P1.0	M8 x P1.25	M10 x P1.5	M10 x P1.5	M10 x P1.5	M12 x P1.75	M12 x P1.75
B	B1	2.5	2.5	2.5	2.5	5	5	5	
	B2	20	25	35	35	40	40	50	
	B3	147	180.5	218	260	293	315	367	
	B4	57	65.5	78	90	101	100	127	
	B5	90	115	140	170	192	215	240	
	B6	78	98	118	144	164	182	206	
	B7	39	49	59	72	82	91	103	
	B8	27	32	42.5	42.5	52.5	51.5	63	
	B9	25	30	40	40	50	50	60	
	B10	84	103	128	148	173	200	227	
	B11	6.8	9	11	11	13.5	15	17.5	
	B12	44	54	66	80	95	104	120	
	B13	22	27	33	40	47.5	52	60	
	B14	M6 x P1.0	M8 x P1.25	M10 x P1.5	M12 x P1.75	M12 x P1.75	M14 x P2.0	M16 x P2.0	M16 x P2.0
C	C1	121	146	180	214	245	275	310	
	C2	42	52	64	76	84	91.5	103	
	C3	79	94	120	138	161	183.5	206	
	C4	2	2	2	2	2	2	2	
	C5	5	5	5	5	5	5	5	
	C6	25	30	40	50	65	80	90	
	C7	35	40	50	60	75	90	100	
	C8	9	14	18	23	27	32	38	
	C9	60	80	100	120	138	146	166	
D	D1	20	24	32	40	48	55	70	
	D2	6	8	10	12	14	16	20	
	D3	22.5	27	35	43	51.5	59	74.5	
	D4	M6 x P1.0	M8 x P1.25	M10 x P1.5	M10 x P1.5	M12 x P1.75	M16 x P2.0	M20 x P2.5	M20 x P2.5
Weight	重量	2.9	5.0	8.7	12.0	21.1	32.8	42.0	64.6

HY-FV series

RATIO : 5.10.15 (單段 1-Stage)

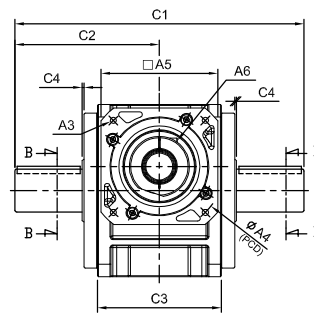
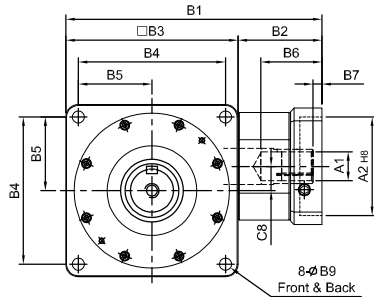
入力法蘭 - 雙出力軸心

Input Flange - Double Output Shaft



(140#以上)

ØA1	D	E
Ø32	10	35.3
Ø35	10	38.3
Ø38	10	41.3
Ø42	12	45.3
Ø48	14	51.8
Ø55	16	59.3

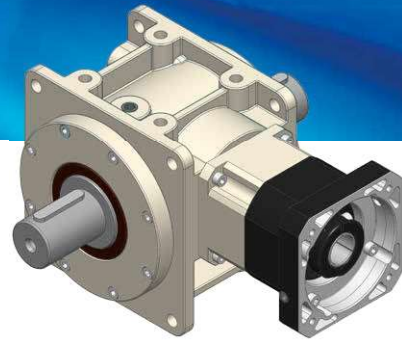


unit: mm

Model Code	55	75	90	115	130	140	160	190	
A	A1	8 · 11	14	14 · 19 · 24	19 · 22 · 24	24 · 28 · 32	32 · 35 · 38	32 · 35 · 38	42 · 48 · 55
	A2	30 · 40 · 50	50 · 60 · 70	50 · 70 · 80 · 95	70 · 80 · 95 · 110	95 · 110 · 130	110 · 130 · 180	110 · 130 · 180	114.3 · 180 · 230 · 250
	A3	M3 · M4 · M5	M4 · M5 · M6	M5 · M6	M5 · M6 · M8	M6 · M8 · M10	M8 · M10 · M12	M8 · M10 · M12	M12 · M16
	A4	46 · 60 · 63	70 · 75 · 90	70 · 90 · 100 · 115	90 · 100 · 115 · 145	115 · 145 · 165	145 · 165 · 200	145 · 165 · 200	200 · 215 · 265 · 300
	A5	46 · 55	64 · 70 · 80	80 · 92 · 110	92 · 110 · 130	122 · 130 · 150	146 · 150 · 190	146 · 150 · 190	182 · 200 · 250 · 265
	A6	M3 x P.05	M5 x P0.8	M5 x P0.8	M6 x P1.0	M8 x P1.25	M10 x P1.5	M10 x P1.5	M10 x P1.5
B	B1	135	172	202 · 221	241	286	333	358	417 · 419
	B2	45	57	62 · 81	71	94	118	118	153 · 155
	B3	90	115	140	170	192	215	240	264
	B4	78	98	118	144	164	182	206	224
	B5	39	49	59	72	82	91	103	112
	B6	28	38	49 · 68.5	58	69.5	81.5	81.5	114.5 · 116.5
	B7	5	6	9 · 23.5	8	10	10	10	11.5 · 13.5
	B8	84	103	128	148	173	200	227	254
	B9	6.8	9	11	11	13.5	15	17.5	17.5
	B10	44	54	66	80	95	104	120	140
	B11	22	27	33	40	47.5	52	60	70
	B12	M6 x P1.0	M8 x P1.25	M10 x P1.5	M12 x P1.75	M12 x P1.75	M14 x P2.0	M16 x P2.0	M16 x P2.0
C	C1	158	188	232	276	322	367	412	462
	C2	79	94	116	138	161	183.5	206	231
	C3	60	80	100	120	138	146	166	196
	C4	2	2	2	2	2	2	2	2
	C5	5	5	5	5	5	5	5	5
	C6	25	30	40	50	65	80	90	100
	C7	35	40	50	60	75	90	100	110
	C8	9	14	18	23	27	32	38	42
D	D1	20	24	32	40	48	55	60	70
	D2	6	8	10	12	14	16	18	20
	D3	22.5	27	35	43	51.5	59	64	74.5
	D4	M6 x P1.0	M8 x P1.25	M10 x P1.5	M10 x P1.5	M12 x P1.75	M16 x P2.0	M20 x P2.5	M20 x P2.5
Weight	重量	3.4	5.4	9.7	15.3	23.1	34.7	47.1	74.0

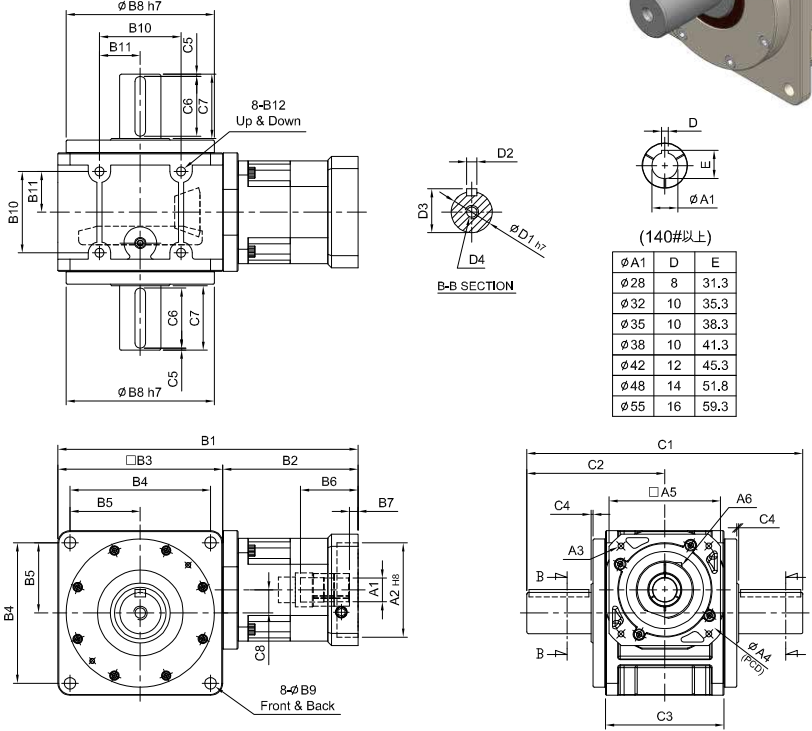
HY-RV series

RATIO : 25.50.75.100.150 (雙段 2-Stage)



搭配行星減速機 - 雙出力軸心

Fitted with Planetary Reducer - Double Output Shaft



unit: mm

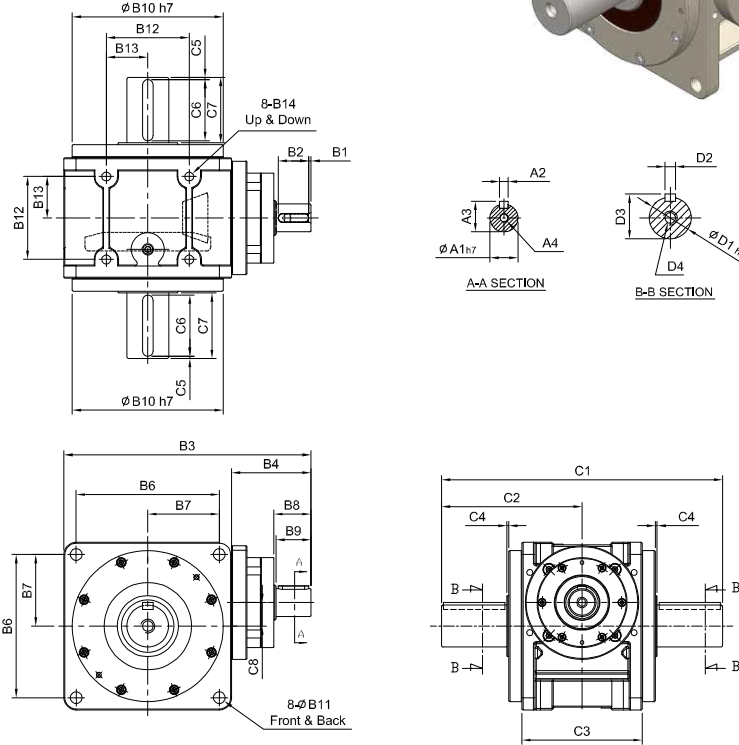
Model Code	55	75	90	115	130	140	160	190	
A	A1	8 · 9 · 11 · 14	11 · 14 · 16 · 19	(14) · 16 · 19	16 · 19 · 22 · 24	22 · 24 · 28 · 32 · 35	28 · 32 · 35 · 38	28 · 32 · 35 · 38	35 · 38 · 42 · 48 · 55
	A2	30 · 40 · 50	50 · 60 · 70	50 · 70 · 80 · 95	70 · 80 · 95 · 110	95 · 110 · 130	110 · 130 · 180	110 · 130 · 180	114.3 · 180 · 230 · 250
	A3	M3 · M4 · M5	M4 · M5 · M6	M5 · M6	M5 · M6 · M8	M6 · M8 · M10	M8 · M10 · M12	M8 · M10 · M12	M12 · M16
	A4	46 · 60 · 63	70 · 75 · 90	70 · 90 · 100 · 115	90 · 100 · 115 · 145	115 · 145 · 165	145 · 165 · 200	145 · 165 · 200	200 · 215 · 265 · 300
	A5	46 · 55	64 · 70 · 80	80 · 92 · 110	92 · 110 · 130	122 · 130 · 150	146 · 150 · 190	146 · 150 · 190	182 · 200 · 250 · 265
	A6	M3 x P.05	M5 x P0.8	M5 x P0.8	M6 x P1.0	M8 x P1.25	M10 x P1.5	M10 x P1.5	M10 x P1.5
B	B1	157	201 · 209	(224.5) · 237	287	340 · 360	405	430	508 · 510
	B2	67	86 · 94	(84.5) · 97	117	148 · 168	190	190	244 · 246
	B3	90	115	140	170	192	215	240	264
	B4	78	98	118	144	164	182	206	224
	B5	39	49	59	72	82	91	103	112
	B6	26	33.5 · 41.5	(33.5) · 45.5	59	67 · 83	84.5	84.5	114.5 · 116.5
	B7	5	6	(6) · 10	9	10 · 11	10	10	11.5 · 13.5
	B8	84	103	128	148	173	200	227	254
	B9	6.8	9	11	11	13.5	15	17.5	17.5
	B10	44	54	66	80	95	104	120	140
	B11	22	27	33	40	47.5	52	60	70
	B12	M6 x P1.0	M8 x P1.25	M10 x P1.5	M12 x P1.75	M12 x P1.75	M14 x P2.0	M16 x P2.0	M16 x P2.0
C	C1	158	188	232	276	322	367	412	462
	C2	79	94	116	138	161	183.5	206	231
	C3	60	80	100	120	138	146	166	196
	C4	2	2	2	2	2	2	2	2
	C5	5	5	5	5	5	5	5	5
	C6	25	30	40	50	65	80	90	100
	C7	35	40	50	60	75	90	100	110
	C8	9	14	18	23	27	32	38	42
D	D1	20	24	32	40	48	55	60	70
	D2	6	8	10	12	14	16	18	20
	D3	22.5	27	35	43	51.5	59	64	74.5
	D4	M6 x P1.0	M8 x P1.25	M10 x P1.5	M10 x P1.5	M12 x P1.75	M16 x P2.0	M20 x P2.5	M20 x P2.5
Weight	重量	4.0	6.6	11.5	18.9	31.7	41.2	61.6	100.6

HY-DV series

RATIO : 5.10.15 (單段 1-Stage)

單入力軸心 - 雙出力軸心

Single Input Shaft - Double Output Shaft

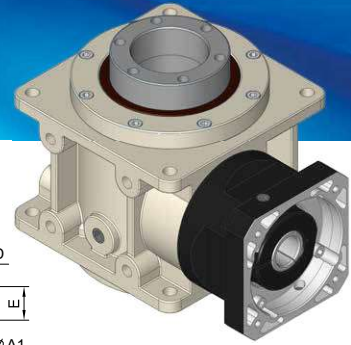


unit: mm

Model Code	55	75	90	115	130	140	160	190	
A	A1	14	19	24	28	32	38	40	
	A2	5	6	8	8	10	12	12	
	A3	16	21.5	27	31	35	41	43	
	A4	M5 x P0.8	M6 x P1.0	M8 x P1.25	M10 x P1.5	M10 x P1.5	M10 x P1.5	M12 x P1.75	M12 x P1.75
B	B1	2.5	2.5	2.5	2.5	5	5	5	
	B2	20	25	35	35	40	40	50	
	B3	147	181	218	260	293	315	367	
	B4	57	66	78	90	101	100	127	
	B5	90	115	140	170	192	215	240	
	B6	78	98	118	144	164	182	206	
	B7	39	49	59	72	82	91	103	
	B8	27	32	42.5	42.5	52.5	51.5	63	
	B9	25	30	40	40	50	50	60	
	B10	84	103	128	148	173	200	227	
	B11	6.8	9	11	11	13.5	15	17.5	
	B12	44	54	66	80	95	104	120	
	B13	22	27	33	40	47.5	52	60	
	B14	M6 x P1.0	M8 x P1.25	M10 x P1.5	M12 x P1.75	M12 x P1.75	M14 x P2.0	M16 x P2.0	M16 x P2.0
C	C1	158	188	232	276	322	367	412	
	C2	79	94	116	138	161	183.5	206	
	C3	60	80	100	120	138	146	166	
	C4	2	2	2	2	2	2	2	
	C5	5	5	5	5	5	5	5	
	C6	25	30	40	50	65	80	90	
	C7	35	40	50	60	75	90	100	
	C8	9	14	18	23	27	32	38	
D	D1	20	24	32	40	48	55	60	
	D2	6	8	10	12	14	16	20	
	D3	22.5	27	35	43	51.5	59	64	
	D4	M6 x P1.0	M8 x P1.25	M10 x P1.5	M10 x P1.5	M12 x P1.75	M16 x P2.0	M20 x P2.5	M20 x P2.5
Weight	重量	3.1	5.3	9.2	14.7	23.6	37.7	47.8	70.6

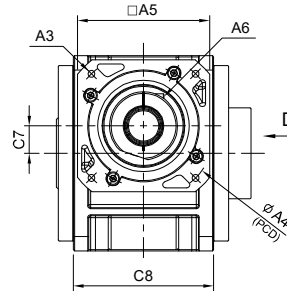
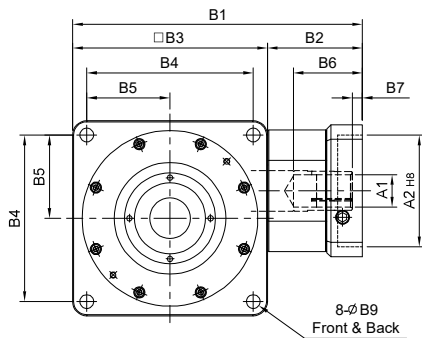
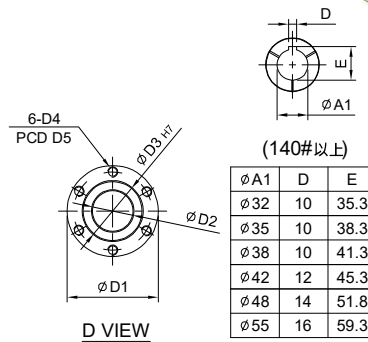
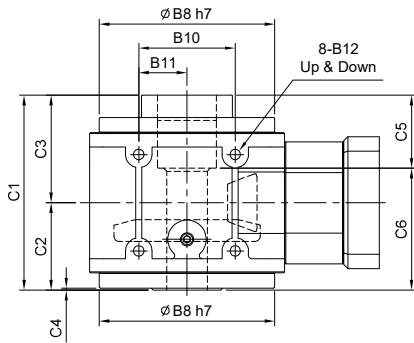
HY-FP series

RATIO : 5.10.15 (單段 1-Stage)



入力法蘭 - 螺桿式

Input Flange - Ball Screw



unit: mm

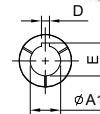
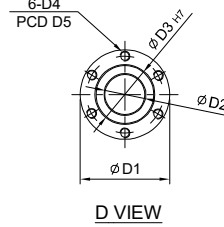
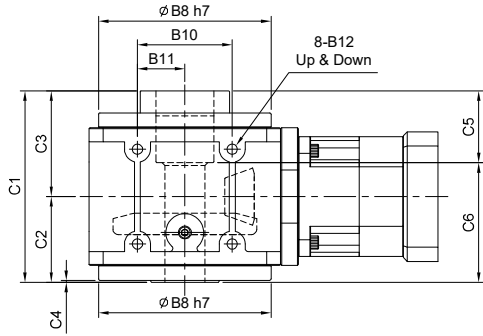
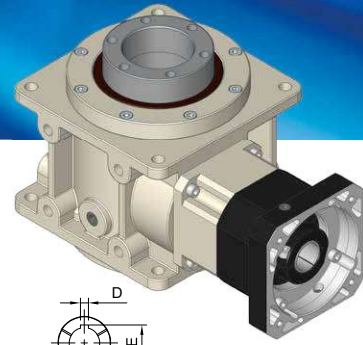
	Model Code	75	90	115	130	140	160	190
		A	A1 14 A2 50·60·70 A3 M4·M5·M6 A4 70·75·90 A5 64·70·80 A6 M5 x P0.8	14·19·24 50·70·80·95 M5·M6 70·90·100·115 80·92·110 M5 x P0.8	19·22·24 70·80·95·110 M5·M6·M8 90·100·115·145 92·110·130 M6 x P1.0	24·28·32 95·110·130 M6·M8·M10 115·145·165 122·130·150 M8 x P1.25	32·35·38 110·130·180 M8·M10·M12 145·165·200 146·150·190 M10 x P1.5	32·35·38 110·130·180 M8·M10·M12 145·165·200 146·150·190 M10 x P1.5
B	B1 172 B2 57 B3 115 B4 98 B5 49 B6 38 B7 6 B8 103 B9 9 B10 54 B11 27 B12 M8 x P1.25	202·221 62·81 140 118 59 49·68.5 9·23.5 128 11 66 33	241 71 170 144 72 58 8 148 11 80 40	286 94 192 164 82 69.5 10 173 13.5 95 47.5	333 118 215 182 91 81.5 10 200 15 104 52	358 118 240 206 103 81.5 10 227 17.5 120 60	417·419 153·155 264 224 112 114.5·116.5 11.5·13.5 254 17.5 140 70	
C	C1 125 C2 58 C3 67 C4 3.25 C5 50 C6 75 C7 14 C8 80	140 66 74 2 58 82 18 100	177 78.5 98.5 2.5 72 105 23 120	193 87 106 2 72 121 27 138	205 94 111 2.5 82 123 32 146	230 107 123 2.5 92 138 38 166	260 123 137 3 117 143 42 196	
D	D1 54.7 D2 22 D3 34 D4 M5 x P0.8 D5 45	64.7 30 40 M5 x P0.8 51	89.7 38 58 M10 x P1.5 77	89.7 40 58 M10 x P1.5 77	99.7 44 64 M10 x P1.5 84	117.7 54 75 M12 x P1.75 97	129.7 65 90 M12 x P1.75 112	
Weight	重量	4.3	8.3	12.7	18.7	26.9	37.9	58.9

HY-RP series

RATIO : 25.50.75.100.150 (雙段 2-Stage)

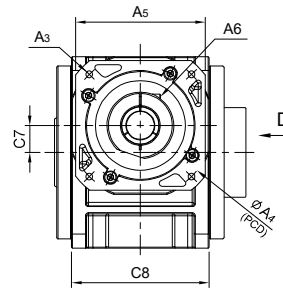
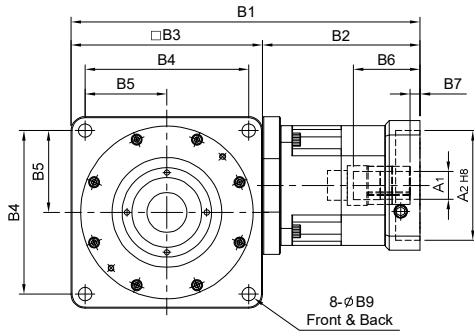
搭配行星減速機 - 螺桿式

Fitted with Planetary Reducer - Ball Screw



(140#以上)

φA1	D	E
φ28	8	31.3
φ32	10	35.3
φ35	10	38.3
φ38	10	41.3
φ42	12	45.3
φ48	14	51.8
φ55	16	59.3

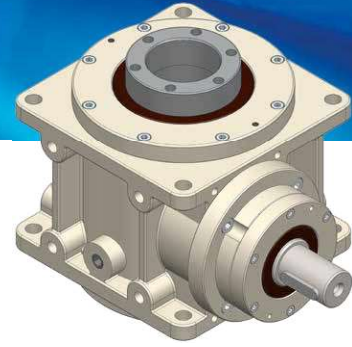


unit: mm

Model Code	75	90	115	130	140	160	190
	A	A1: 11·14·16·19 A2: 50·60·70 A3: M4·M5·M6 A4: 70·75·90 A5: 64·70·80 A6: M5 x P0.8	(14)·16·19 50·70·80·95 M5·M6 70·90·100·115 80·92·110 M5 x P0.8	16·19·22·24 70·80·95·110 M5·M6·M8 90·100·115·145 92·110·130 M6 x P1.0	22·24·28·32·35 95·110·130 M6·M8·M10 115·145·165 122·130·150 M8 x P1.25	28·32·35·38 110·130·180 M8·M10·M12 145·165·200 146·150·190 M10 x P1.5	28·32·35·38 110·130·180 M8·M10·M12 145·165·200 146·150·190 M10 x P1.5
B	B1: 201·209 B2: 86·94 B3: 115 B4: 98 B5: 49 B6: 33.5·41.5 B7: 6 B8: 103 B9: 9 B10: 54 B11: 27 B12: M8 x P1.25	(224.5)·237 (84.5)·97 140 118 59 (33.5)·45.5 (6)·10 128 11 66 33	287 117 170 144 72 59 9 148 11 80 40	340·360 148·168 192 164 82 67·83 10·11 173 13.5 95 47.5	405 190 215 182 91 84.5 10 200 15 104 52	430 190 240 206 103 84.5 10 227 17.5 120 60	508·510 244·246 264 224 112 114.5·116.5 11.5·13.5 254 17.5 140 70
C	C1: 125 C2: 58 C3: 67 C4: 3.25 C5: 50 C6: 75 C7: 14 C8: 80	140 66 74 2 58 82 18 100	177 78.5 98.5 2.5 72 105 23 120	193 87 106 2 72 121 27 138	205 94 111 2.5 82 123 32 146	230 107 123 2.5 92 138 38 166	260 123 137 3 117 143 42 196
D	D1: 54.7 D2: 22 D3: 34 D4: M5 x P0.8 D5: 45	64.7 30 40 M5 x P0.8 51	89.7 38 58 M10 x P1.5 77	89.7 40 58 M10 x P1.5 77	99.7 44 64 M10 x P1.5 84	117.7 54 75 M12 x P1.75 97	129.7 65 90 M12 x P1.75 112
Weight	重量: 5.5	10.1	16.4	27.3	41.5	52.5	85.5

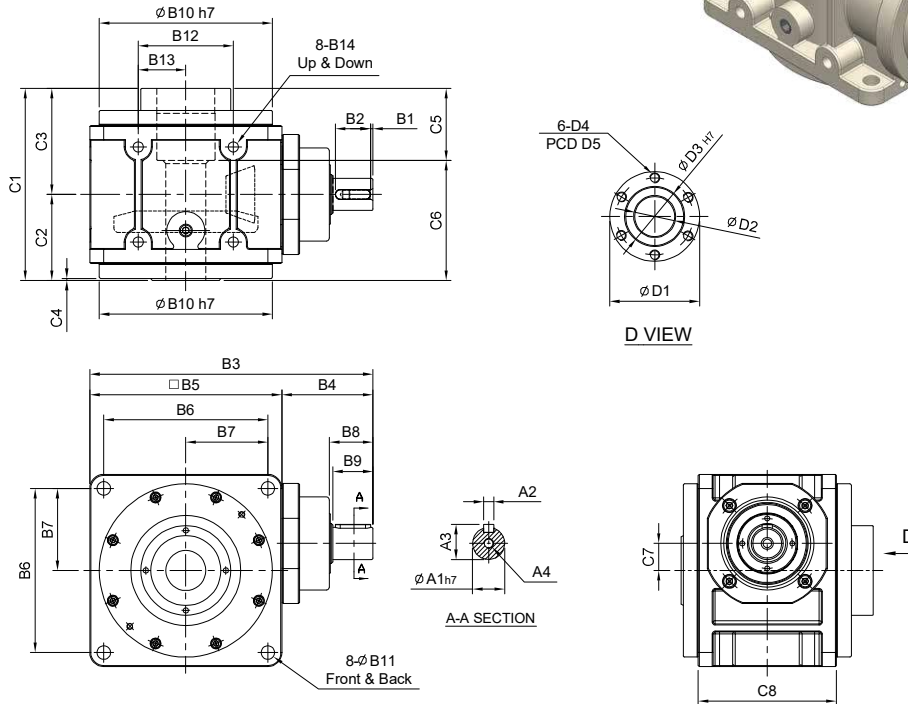
HY-DP series

RATIO : 5.10.15 (單段 1-Stage)



單入力軸心 - 螺桿式

Single Input Shaft - Ball Screw

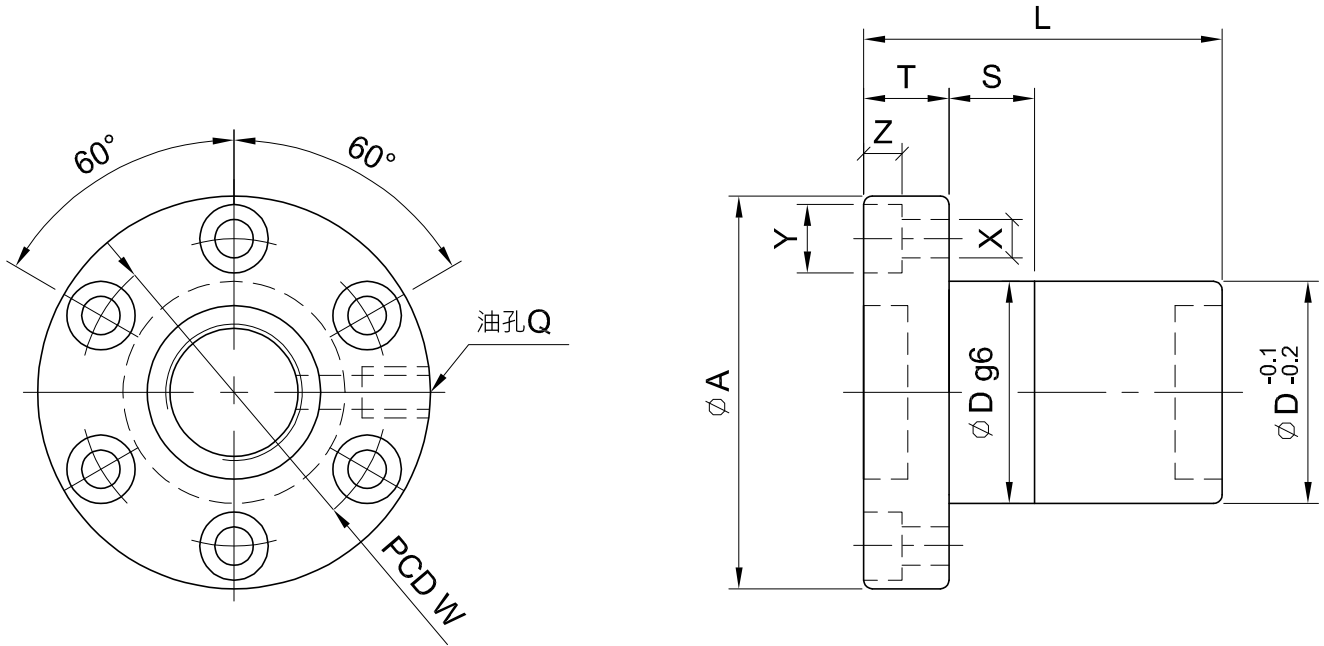
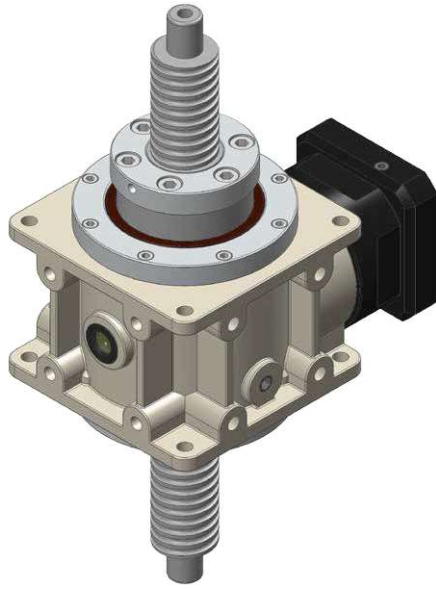


unit: mm

Model Code	75	90	115	130	140	160	190
	A	A1 19	24	28	32	32	38
A2 6	8	8	10	10	12	12	
A3 21.5	27	31	35	35	41	43	
A4	M6 x P1.0	M8 x P1.25	M10 x P1.5	M10 x P1.5	M10 x P1.5	M12 x P1.75	M12 x P1.75
B	B1 2.5	2.5	2.5	5	5	5	5
B2 25	35	35	40	40	50	50	
B3 181	218	260	293	315	367	403	
B4 66	78	90	101	100	127	139	
B5 115	140	170	192	215	240	264	
B6 98	118	144	164	182	206	224	
B7 49	59	72	82	91	103	112	
B8 32	42.5	42.5	52.5	51.5	63	63.5	
B9 30	40	40	50	50	60	60	
B10 103	128	148	173	200	227	254	
B11 9	11	11	13.5	15	17.5	17.5	
B12 54	66	80	95	104	120	140	
B13 27	33	40	47.5	52	60	70	
B14	M8 x P1.25	M10 x P1.5	M12 x P1.75	M12 x P1.75	M14 x P2.0	M16 x P2.0	M16 x P2.0
C	C1 125	140	177	193	205	230	260
C2 58	66	78.5	87	94	107	123	
C3 67	74	98.5	106	111	123	137	
C4 3.25	2	2.5	2	2.5	2.5	3	
C5 50	58	72	72	82	92	117	
C6 75	82	105	121	123	138	143	
C7 14	18	23	27	32	38	42	
C8 80	100	120	138	146	166	196	
D	D1 54.7	64.7	89.7	89.7	99.7	117.7	129.7
D2 22	30	38	40	44	54	65	
D3 34	40	58	58	64	75	90	
D4	M5 x P0.8	M5 x P0.8	M10 x P1.5	M10 x P1.5	M10 x P1.5	M12 x P1.75	M12 x P1.75
D5 45	51	77	77	84	97	112	
Weight 重量	4.2	7.8	12.2	19.2	29.6	38.7	55.5

Reference Information of Ball Screw

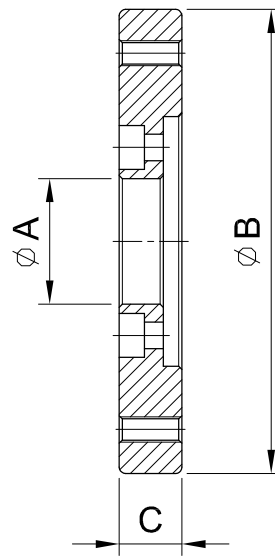
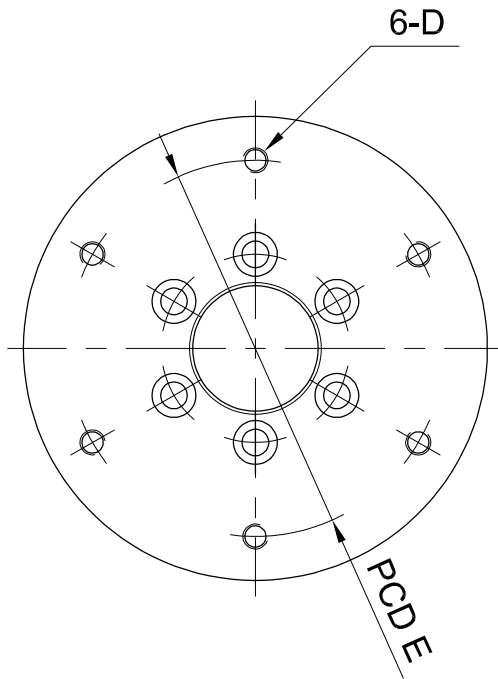
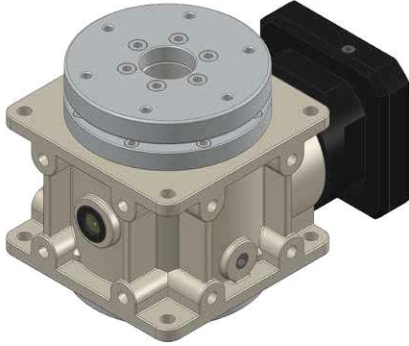
滾珠螺桿參考資料



配合減速機 型號 Model of Reducer	螺桿尺寸 Screw Size		基本額定負荷 Basic Rate Load (kgf)		螺帽 Nut		法蘭 Flange			配合 FIT	螺絲孔 Screw Bolt			油孔 Oil Hole	螺桿 長度 Length
	外徑 O.D.	導程 Lead	動負荷 Dynamic	靜負荷 Static	Dg6	L	A	T	W	S	X	Y	Z	Q	
55	-	-	-	-	-	-	-	-	-	-	-	-	-	-	-
75	20	6	1,380	2,730	34	61	57	12	45	12	5.5	9.5	5.5	M6 x P1	≤ 1500
90	25	8	1,630	3,650	40	69	63.5	12	51	15	5.5	9.5	5.5	M8 x P1	≤ 1500
115	36	10	3,600	8,280	58	89	98	18	77	20	11	17.5	11	M8 x P1	≤ 1500
130	36	10	3,600	8,280	58	89	98	18	77	20	11	17.5	11	M8 x P1	≤ 1500
140	40	10	4,670	11,830	64	99	106	18	84	20	11	17.5	11	M8 x P1	≤ 1500
160	50	12	5,770	14,870	75	111	121	22	97	20	14	20	13	1/8"PT	≤ 1500
190	63	12	9,320	29,150	90	136	136	22	112	20	14	20	13	1/8"PT	≤ 1500

Flange (B)

旋盤 (B)



Model / Code	55	75	90	115	130	140	160	190
A	-	25	30	40	45	50	55	60
B	-	102	128	148	168	198	228	248
C	-	15	16	20	23	24	23	27
D	-	M6 x P1.0	M8 x P1.25	M8 x P1.25	M10 x P1.5	M10 x P1.5	M10 x P1.5	M12 x P1.25
E	-	80	100	120	140	160	180	200