

# Micro motoriduttori brushless CC a vite senza fine

## Micro brushless DC wormgearmotors

CM026 / CL026 con motore brushless CC

CM026 / CL026 with DC brushless motor

CM026 CL026 $n_1=3000$ rpm			BLS012.240				BLS018.240			
ir	$M_n$ [Nm]	Kg	Coppia nominale Rated torque 24V		Coppia massima Peak torque 24V		Coppia nominale Rated torque 24V		Coppia massima Peak torque 24V	
			[ Nm ]	[ rpm ]	[ Nm ]	[ rpm ]	[ Nm ]	[ rpm ]	[ Nm ]	[ rpm ]
5	10	0.8	0.56	800	1.11	800	0.82	800	1.65	800
7.5	11		0.82	533	1.63	533	1.21	533	2.41	533
10	11		1.06	400	2.13	400	1.57	400	3.15	400
15	11		1.56	267	3.11	267	2.30	267	4.61	267
20	11		2.00	200	4.00	200	2.96	200	5.92	200
30	12		2.74	133	5.48	133	4.05	133	8.10	133
40	11		3.40	100	6.80	100	5.03	100	10.06	100
50	10		4.00	80	8.00	80	5.92	80	11.84	80
60	9		4.50	67	9.00	67	6.66	67	13.32	67

Nota: le caselle in colore grigio indicano il superamento della coppia massima sopportata dal riduttore per il servizio in S1.

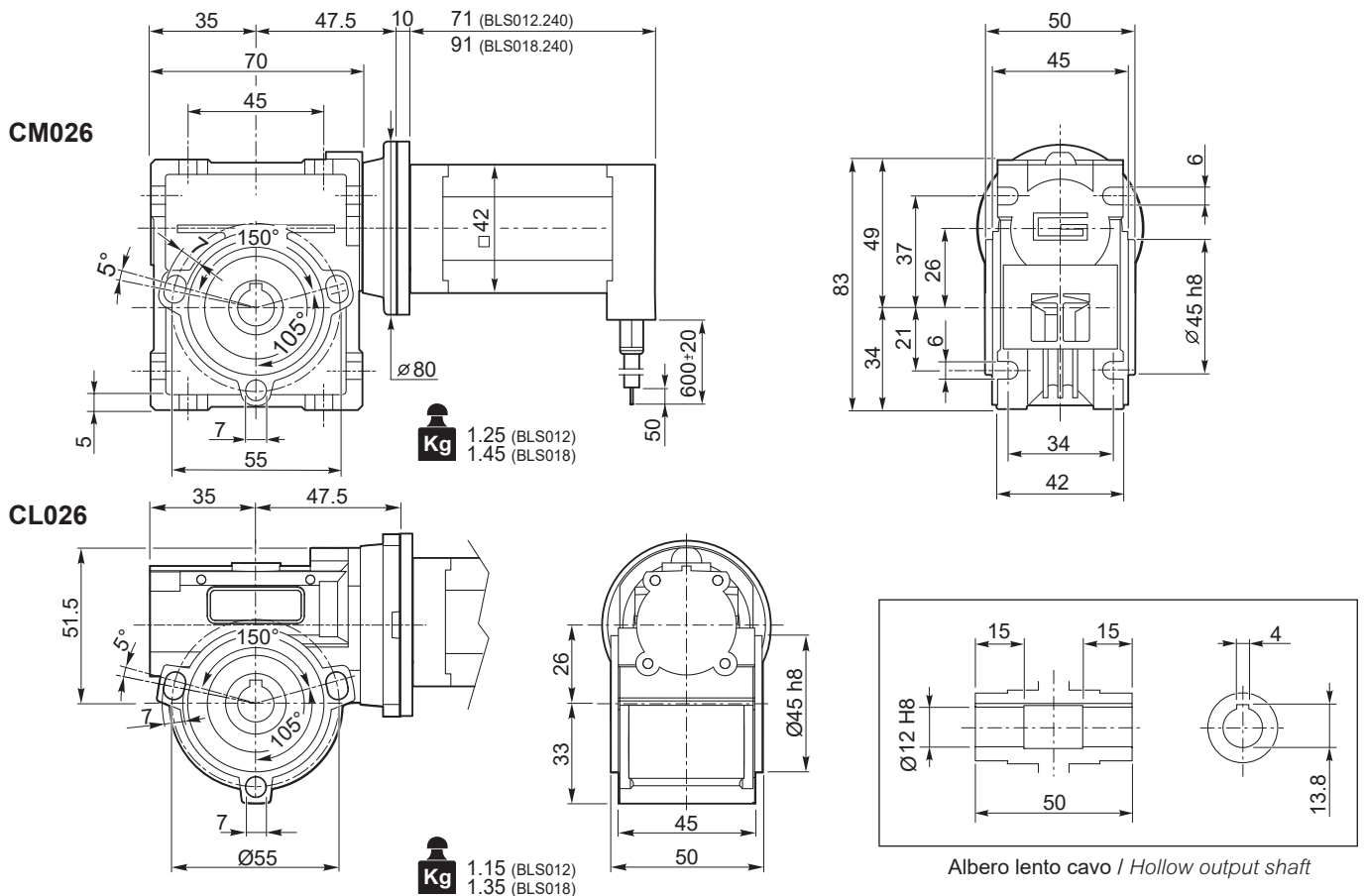
N.B.: boxes in grey indicate that maximum torque withstood by gear reducer for service in S1 is exceeded.

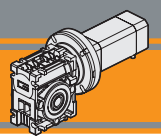
Tipo Type	Numero di poli Number of poles	Numero di fasi Number of phase	Tensione Rated voltage [ V ]	Numero di giri Rated speed [ rpm ]	Coppia nominale Rated torque [ Nm ]	Potenza nominale Rated power [ W ]
BLS012.240	8	3	24	4000	0.125	52.5
BLS018.240	8	3	24	4000	0.185	77.5

Tipo Type	Coppia massima Peak torque [ Nm ]	Corrente nominale Rated current [ A ]	Resistenza Resistance [ ohm ]	Induttanza Inductance [ mH ]	Corrente massima Peak current [ A ]	Peso Weight [ kg ]
BLS012.240	0.25	3.5	0.8	1.2	7.0	0.45
BLS018.240	0.37	5.0	0.55	0.8	10.0	0.65

Azionamenti  
Drives





CM026 / CL026 con motore brushless CC

CM026 / CL026 with DC brushless motor

CM026 CL026 n <sub>1</sub> =3000 rpm			BLS025.24E			
			Coppia nominale Rated torque 24V		Coppia massima Peak torque 24V	
ir	M <sub>n</sub> [Nm]	Kg	[ Nm ]	[ rpm ]	[ Nm ]	[ rpm ]
5	10	0.8	1.11	800	2.23	800
7.5	11		1.63	533	3.26	533
10	11		2.13	400	4.25	400
15	11		3.11	267	6.23	267
20	11		4.00	200	8.00	200
30	12		5.48	133	10.95	133
40	11		6.80	100	13.60	100
50	10		8.00	80	16.00	80
60	9		9.00	67	18.00	67

Nota: le caselle in colore grigio indicano il superamento della coppia massima sopportata dal riduttore per il servizio in S1.

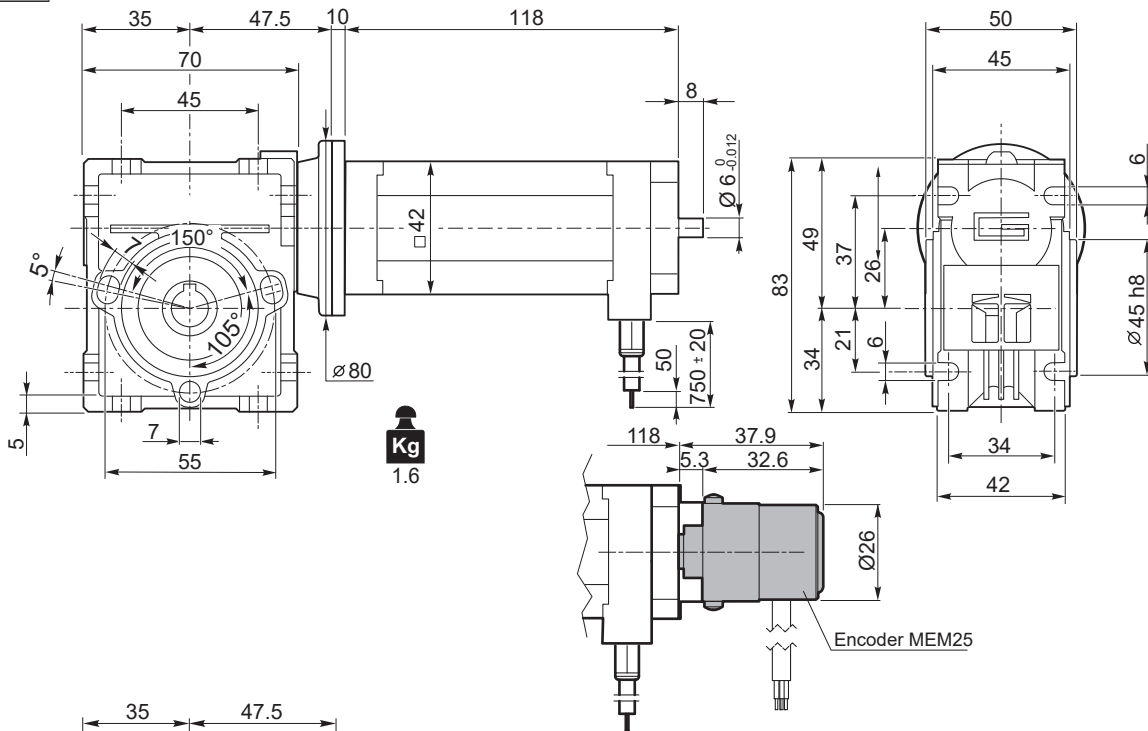
N.B.: boxes in grey indicate that maximum torque withstood by gear reducer for service in S1 is exceeded.

Tipo Type	Numero di poli Number of poles	Numero di fasi Number of phase	Tensione Rated voltage [ V ]	Numero di giri Rated speed [ rpm ]	Coppia nominale Rated torque [ Nm ]	Potenza nominale Rated power [ W ]
BLS025.24E	8	3	24	4000	0.25	105
Tipo Type	Coppia massima Peak torque [ Nm ]	Corrente nominale Rated current [ A ]	Resistenza Resistance [ ohm ]	Induttanza Inductance [ mH ]	Corrente massima Peak current [ A ]	Peso Weight [ kg ]
BLS025.24E	0.5	7.0	0.3	0.5	21	0.8

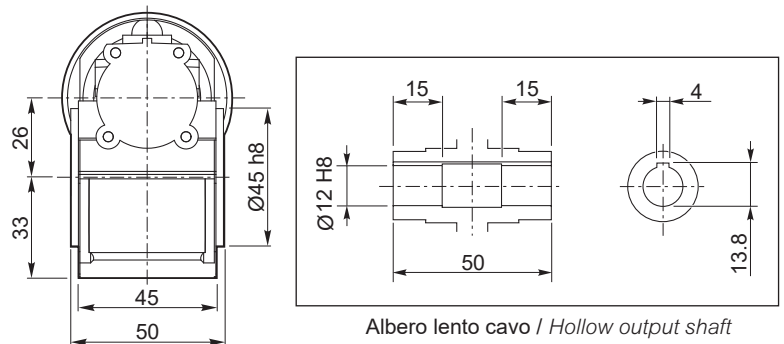
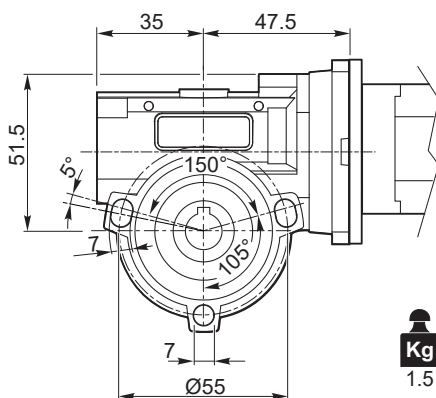
Azionamenti  
Drives



CM026



CL026



Albero lento cavo / Hollow output shaft