



THE SPECIALIST
FOR MOTION
TECHNOLOGY

NADELLA SYSTEMS





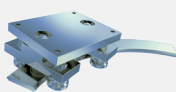
NADELLA / nadella.com
DURBAL / durbal.com
CHIAVETTE UNIFICATE / chiavette.com
IPIRANGA / ipirangahusillos.com
SHUTON / shuton.com

THE SPECIALIST FOR MOTION TECHNOLOGY

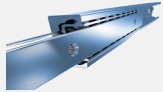
Nadella Group is an expert system partner for all areas of motion technology, with specialized manufacturer companies and a worldwide sales network.

Wherever innovative ideas, customized solutions, precision and reliability are required, developers and design engineers rely on products and solutions from the Nadella Group.

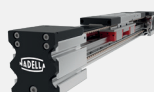
COMPANIES, BRANDS AND PRODUCTS OVERVIEW



Linear Guides



Telescopic Rails



Linear Modules



Linear Systems



Circular Systems



Bearings and Cam Followers



Adjusting Nuts & Rings

durbal

chiavette unificate

TESCUBAL



Rod Ends and Spherical Plain Bearings



Clevises and Ball/Axial Joints

SHUTON

IPIRANGA



Precision Ball Screws



Rolled Ball Screws

MILESTONES

1930

NADELLA foundation in France

1958

Founding of NADELLA GMBH in Germany

1963

Founding of NADELLA S.P.A. in Italy

1984

Start of development and sale of Nadella Linear

2012

New Nadella subsidiaries in China and USA

2014

Acquisition of DURBAL

2018

Acquisition of CHIAVETTE UNIFICATE

2019

Founding of Nadella Motion Technology Changxing Co. Ltd.

2020

New Nadella subsidiaries in France and Spain
Acquisition of SHUTON and IPIRANGA

2021

Acquisition of DAMO

KEY NUMBERS

1 Group

8 manufacturing plants

14 main locations

Italy, Germany, France, Poland, Spain, United Kingdom, U.S.A., China

leading the way in international markets

in over **60** countries

for more than **90** years

APPLICATION SECTORS



RAILWAY TECHNOLOGY



WAREHOUSE & LOGISTICS



MEDICAL ENGINEERING



FOUNDRY & IRONWORKS



ROBOTICS AUTOMATION



PACKAGING INDUSTRY



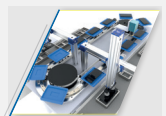
AEROSPACE TECHNOLOGY



PHARMACEUTICAL PRODUCTION



CUTTING & WELDING



HI-TECH PRODUCTION

SUMMARY

PAGE 4	MULTI-AXIS CARTESIAN SYSTEMS
PAGE 6	HEAVY DUTY SYSTEMS
PAGE 8	CIRCULAR SYSTEMS
PAGE 10	LINEAR UNITS

MULTI-AXIS CARTESIAN SYSTEMS

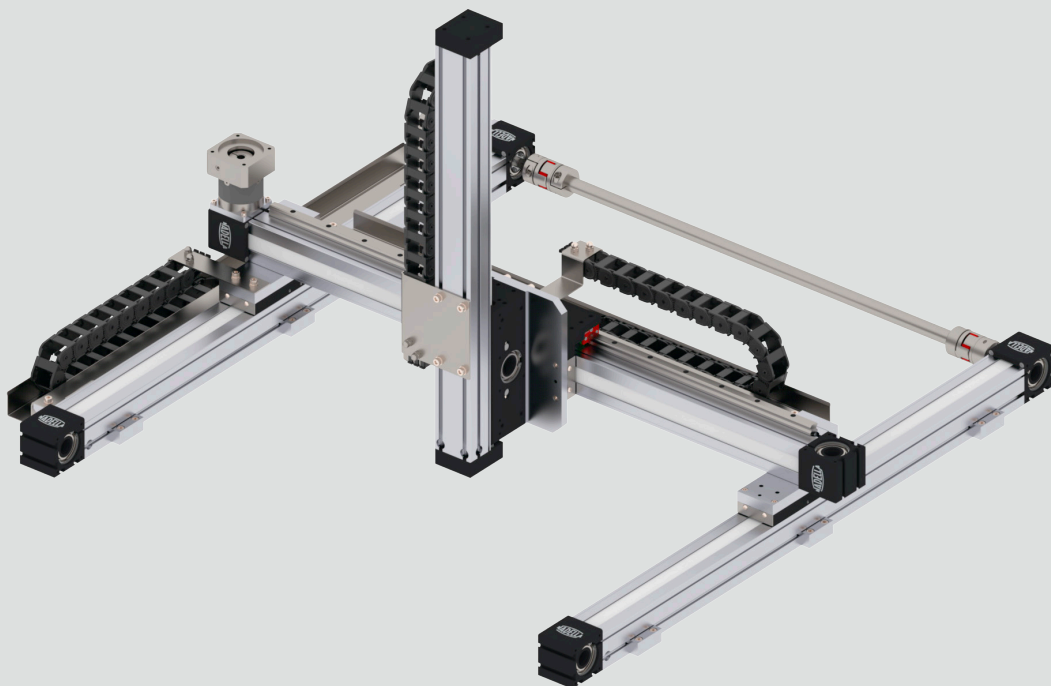
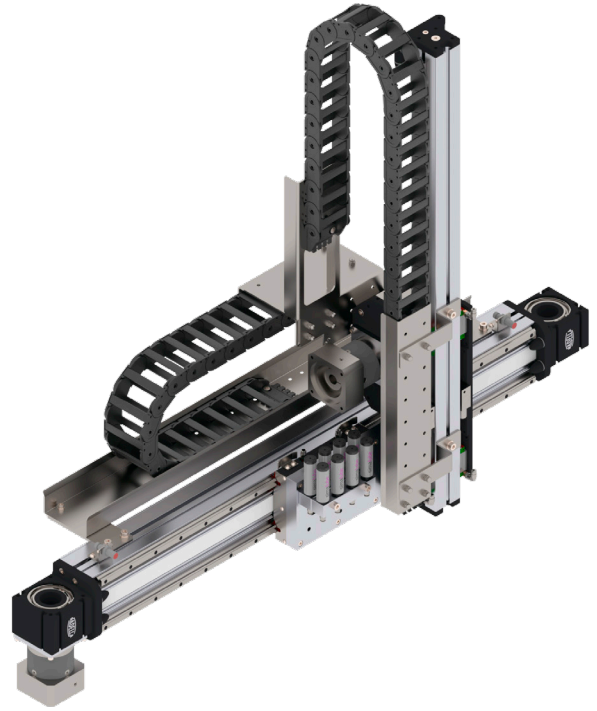
MANIPULATORS 2D-3D AND GANTRY

Multi-axis Cartesian manipulators, consisting of Nadella linear units and rotating axes, for the following systems:

- | Palletization on lines and end of lines for packaging
- | Feeding and handling on machine tools, assembly machines, warehouses and automatic systems
- | Tightening and dispensing for resining, gluing and spreading
- | Positioning of appropriate tools for mechanical processing, removal, marking, welding, spot welding and riveting

Operational dimensions, capacities and dynamics required for the manipulator are fully met thanks to the careful integration of adequate linear units.

The linear unit composing the vertical actuator can be a single linear module or, based on loads, also a telescopic linear module.



SHEET METAL MACHINERY FEEDERS

Cartesian systems for sheet metal processing machinery feeding.

Main systems manufactured:

- | Feeder
- | Dual bar
- | Destacker
- | Transfer shuttle

Operational dimensions, capacities and dynamics required for the system are fully achieved thanks to the careful integration of adequate linear units.

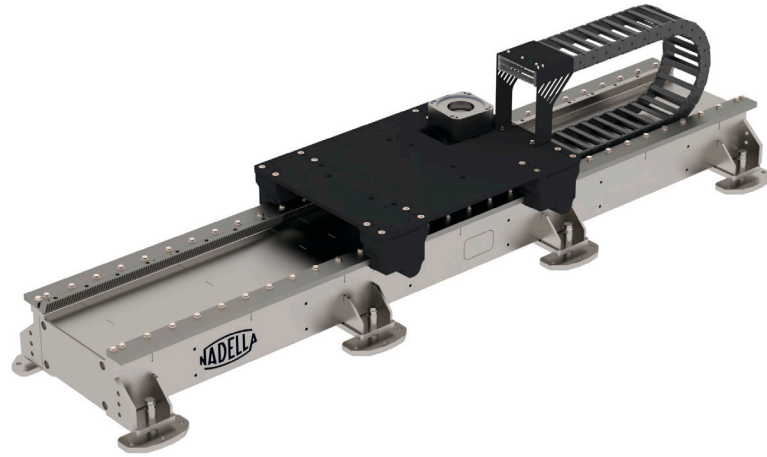


HEAVY DUTY SYSTEMS WITH STEEL FRAME

7th AXIS

Linear track for robots with the following characteristics:

- | Payload up to 15.000 N
- | Electro-welded steel frame and machined using machine tools
- | Track transmission with hardened and ground helix teeth
- | Motorized carriage
- | Automatic lubrication control unit
- | Cable chain included
- | Energy absorption bumper



HEAVY DUTY CARTESIAN UNITS

Linear units in steel with the following characteristics:

- | Electro-welded steel frame and machined using machine tools
- | Tack transmission with hardened and ground helix teeth/or toothed belt reinforced with steel strands
- | Payload up to 13.000 N
- | Repeatability $\pm 0,045$ mm
- | Maximum feed force 7.500 N
- | Speed up to 3 m/s



HEAVY DUTY CARTESIAN SYSTEMS

Linear track for robots with the following characteristics:

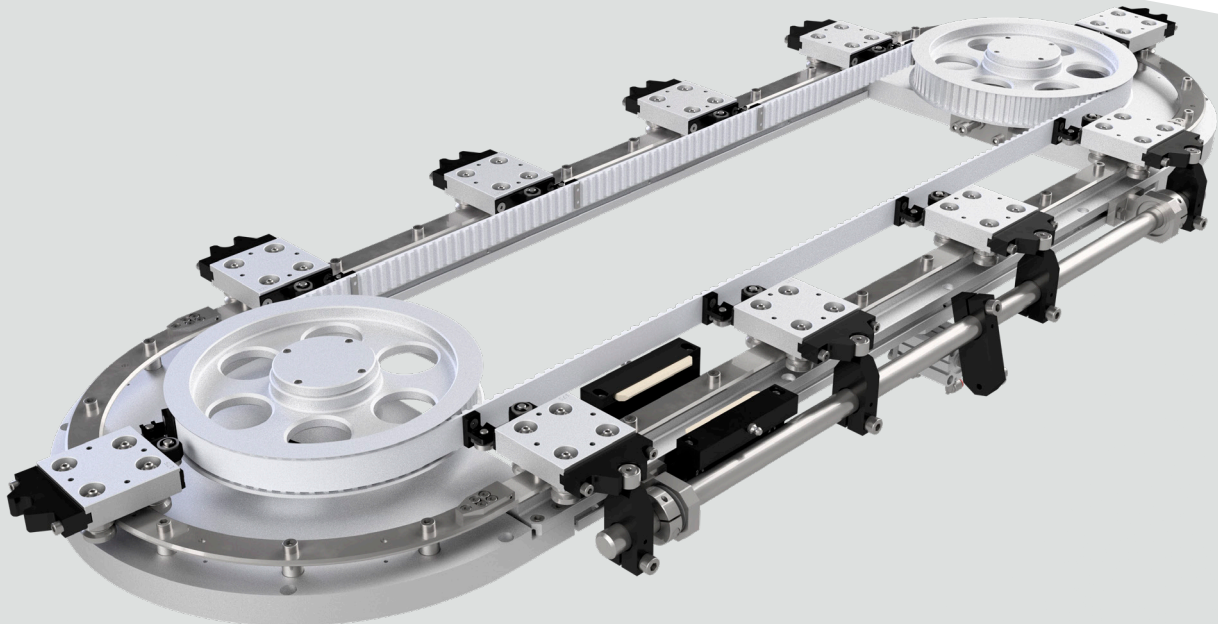
- | Electro-welded steel frame and machined using machine tools
- | Track transmission with hardened and ground helix teeth
- | Automatic lubrication control unit
- | Cable chain included
- | Energy absorption bumper

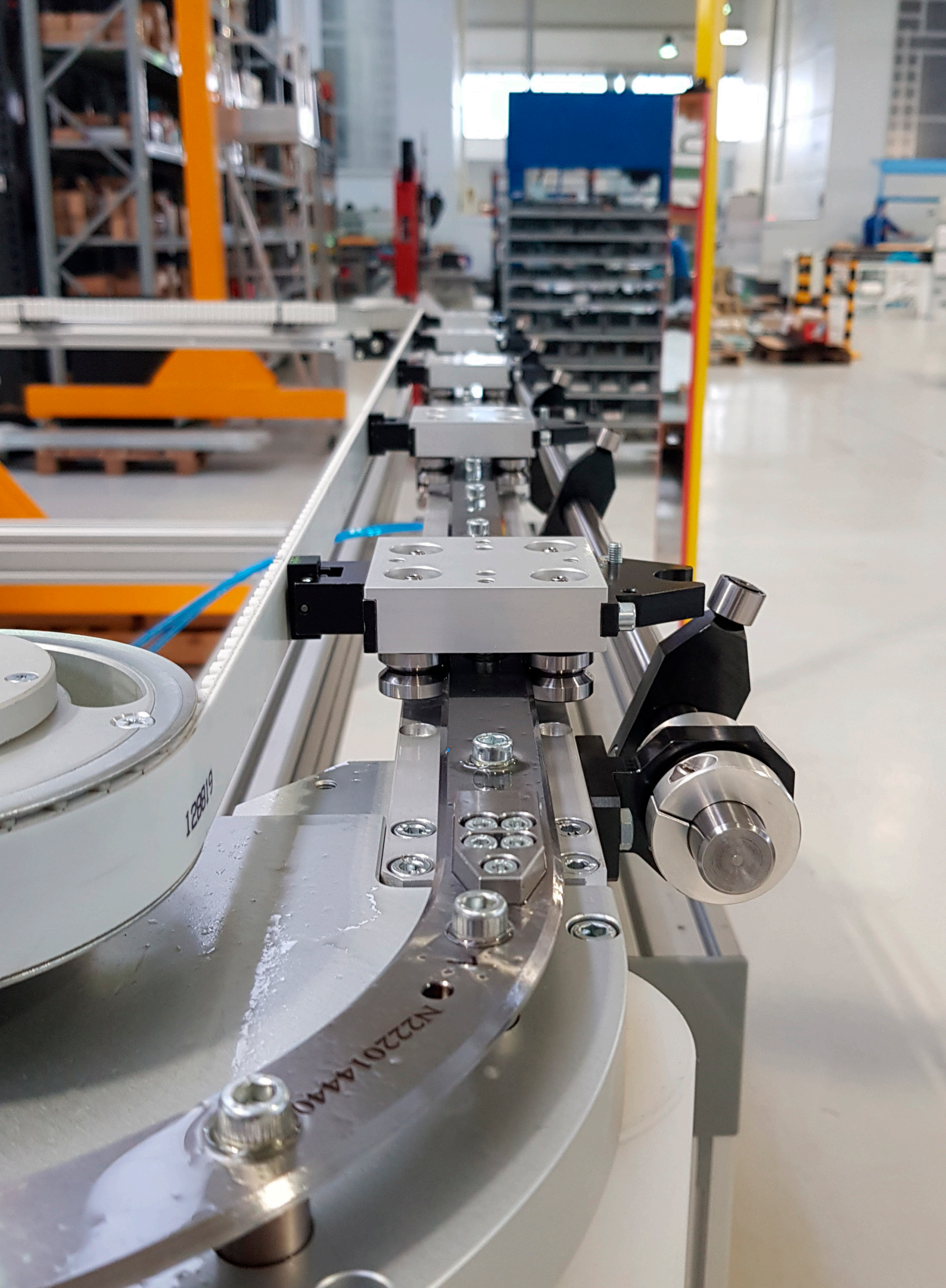


CIRCULAR SYSTEMS

CIRCULAR SYSTEM

- | Aluminum frame with high stiffness and compact design
- | Oval or square circuit based on Nadella FSRO and FSRQ rails
- | Toothed belt driven systems
- | FR..EU rollers to withstand heavy load capacity and high dynamics
- | Belt connector engineered to guarantee a rigid transmission and shock absorption
- | Indexing system to ensure a carriage positioning and repeatability of $\pm 0,05$ mm
- | Modular systems can be customized according to customer requirements
- | Reduced maintenance thanks to LUBR system and roller lubricated for life





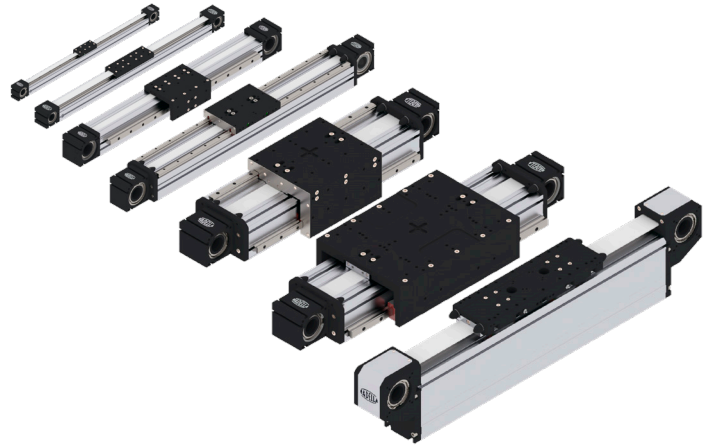
128819

N222014440

LINEAR UNITS

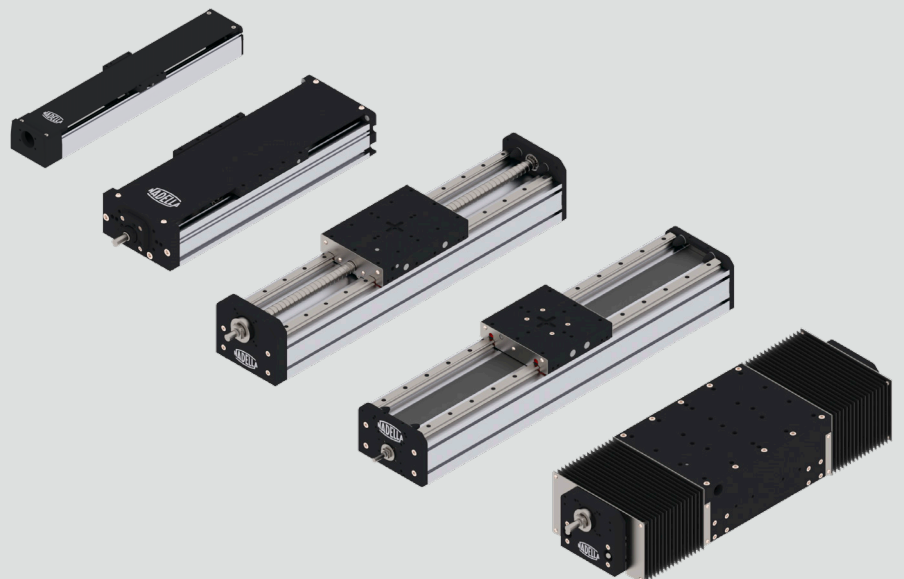
BELT DRIVEN

- | Toothed belt AT type
- | Ball recirculation / Rollers Guiding system
- | Repeatability $\pm 0,05$ mm
- | Payload up to 20.000 N
- | Speed up to 10 m/s
- | Covering protection available
- | Strokes up to 6m in single beam
- | Gearbox configurations available



BALLSCREW DRIVEN

- | Ballscrew ISO5 and ISO7
- | Ball recirculation guiding system
- | Repeatability $\pm 0,02-0,05$ mm
- | Payload up to 8.000 N
- | Speed up to 1,6 m/s
- | Covering protection available
- | Ballscrew supports for long strokes



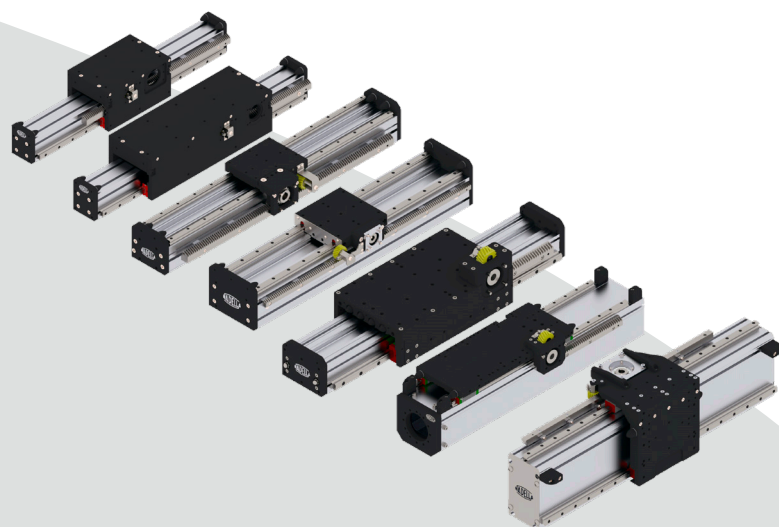
TELESCOPIC

- | Belt or rack driven
- | Ball carriages guide system
- | Repeatability $\pm 0,15$ mm
- | Payload up to 11.200 N
- | Speed up to 4 m/s
- | Gearbox configurations available



RACK AND PINION DRIVEN

- | Rack driven
- | Ball recirculation guiding system
- | Repeatability $\pm 0,1$ mm
- | Payload up to 14.000 N
- | Speed up to 3 m/s
- | Horizontal or Vertical strokes

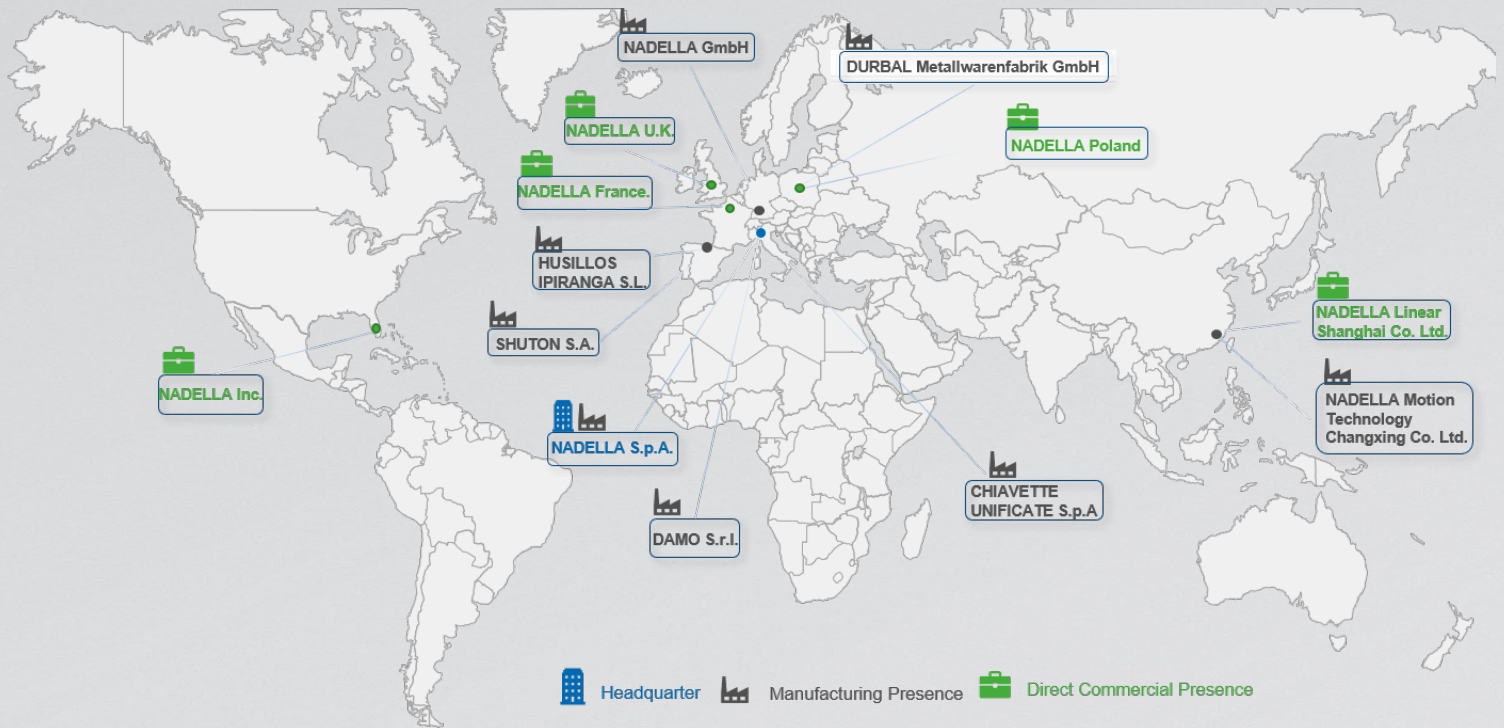


THE SPECIALIST FOR MOTION TECHNOLOGY

Our customers' satisfaction is the basis for our success and growth.
 That is why we are at your service around the world and always keep your requirements as a priority.

We have a worldwide network of sales engineers and distributors in Europe, Asia and the USA.
 This allows us to ensure customer-oriented solutions and best in class delivery and service.

WORLDWIDE NETWORK



BRANCHES AND CONTACTS

NADELLA S.p.A.
 Italy
 Via Melette, 16
 20128 Milano
 Tel.: +39 02 27 093
 Fax: +39 02 257 64 79
 customer.service@nadella.it
 www.nadella.it

NADELLA GmbH
 Germany
 Rudolf-Diesel-Str. 28
 71154 Nufringen
 Tel.: +49 7032 9540-0
 Fax: +49 7032 9540-25
 info@nadella.de
 www.nadella.de

NADELLA Inc.
 United States
 14115 - 63 Way North
 Clearwater - Florida 33760-3621
 Tel.: +1 844-537-0330 (toll-free)
 Fax: +1 844-537-0331
 info@nadella.com
 www.nadella.com

NADELLA Linear Shanghai
 Co. Ltd. - China
 F4, Bld5, No.2388 Chen-hang Road
 Shanghai 201114
 Tel.: +86 21 5068 3835
 Fax: +86 21 5038 7725
 info@nadellamotion.com
 www.nadellamotion.com

NADELLA France
 France
 12 Parvis Colonel Arnaud Beltrame
 Hall A 4ème étage
 78000 Versailles
 Tel.: +33 (0)1 7319 4048
 service.client@nadella.fr
 www.nadella.fr

NADELLA Poland
 Poland
 Tel: +48 666 874 460
 sales.pl@nadella.eu
 www.nadella.com

NADELLA S.A.
 Spain
 Poligono Industrial Erratzu
 Parcela G3. Pabellón 221 - Apdo.65
 E-20130 Urnieta - Gipuzkoa
 Tel. +34 943 336 370
 ventas@nadella.es
 www.nadella.com

DURBAL Metallwarenfabrik
 GmbH - Germany
 Verrenberger Weg 2
 74613 Öhringen
 Tel.: +49 7941 9460-0
 Fax: +49 7941 9460-90
 info@durbal.de
 www.durbal.de

CHIAVETTE UNIFICATE S.p.A.
 Italy
 Via G.Brodolini 6-8-10
 40069 Zola Predosa, Bologna
 Tel.: +39 051 75 87 67
 Fax: +39 051 75 47 80
 tescubal@chivette.it
 www.chivette.com

SHUTON S.A.
 Spain
 Poligono Industrial Goian
 C/Subinoia, 5 - 01170 LEGUTIANO
 Tel.: +34 945 465 629
 Fax: +34 945 465 610
 shuton@shuton.com
 www.shuton.com

HUSILLOS IPIRANGA
 Spain
 Poligono Industrial Erratzu
 Parcela G3. Pabellón 221 - Apdo.65
 E-20130 Urnieta - Gipuzkoa
 Tel. +34 943 336 370
 info@ipirangahusillos.com
 www.ipirangahusillos.com

NADELLA UK
 UK and Ireland
 Tel: +44 7901 214 918
 sales.uk@nadella.eu
 www.nadella.com

DISTRIBUTOR COVERAGE

Austria	China	France	India	Korea	Portugal	Slovakia	Switzerland
Belgium	Czech Republic	Germany	Ireland	Netherlands	Romania	Slovenia	Taiwan
Brazil	Denmark	Great Britain	Israel	Norway	Russia	Spain	Turkey
Canada	Finland	Hungary	Italy	Poland	Singapore	Sweden	United States

WWW.NADELLA.COM