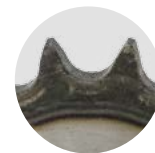
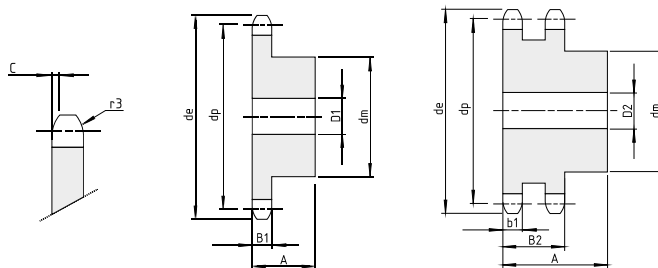


Koła łańcuchowe

Koła łańcuchowe z piastą i utwardzonymi zębami dla łańcucha rolkowego

DIN 8187 - ISO / R 606

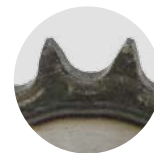
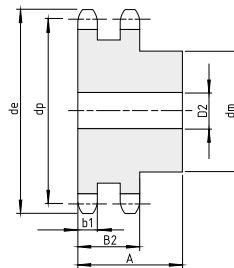
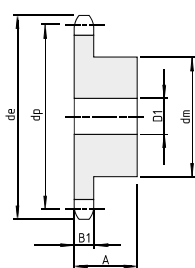
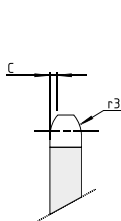


Materiał: stal C45			3/8" x 7/32"					podziałka 9,525 mm		B1	B2	b1	C	r3
								5,3	15,4	5,2	1	10		
Z	de	dp	1-rzędowe 06B-1					2-rzędowe 06B-2						
			kod	dm	D1	A	[kg]	kod	dm	D2	A	[kg]		
8	28,60	24,89	P0136H	15	8	22	0,03	P0179H	15	6	22	0,04		
9	31,50	27,85	P0137H	18	8	22	0,04	P0180H	18	8	22	0,05		
10	34,50	30,82	P0138H	20	8	22	0,05	P0181H	20	8	22	0,07		
11	37,50	33,80	P0139H	22	8	25	0,08	P0182H	22	10	25	0,10		
12	40,50	36,80	P0140H	25	8	25	0,10	P0183H	25	10	25	0,13		
13	43,50	39,80	P1195H	28	10	25	0,13	P0184H	28	10	25	0,16		
14	46,50	42,80	P1196H	31	10	25	0,16	P0185H	31	10	25	0,20		
15	49,50	45,81	P1197H	34	10	25	0,19	P0186H	34	10	25	0,24		
16	52,50	48,82	P1198H	37	10	28	0,24	P0187H	37	12	30	0,27		
17	55,50	51,83	P1199H	40	10	28	0,28	P0188H	40	12	30	0,32		
18	58,60	54,85	P1200H	43	10	28	0,33	P0189H	43	12	30	0,38		
19	61,60	57,87	P1201H	45	10	28	0,36	P0190H	46	12	30	0,42		
20	64,60	60,89	P1202H	46	10	28	0,39	P0191H	49	12	30	0,48		
21	67,60	63,91	P1203H	48	12	28	0,42	P0192H	52	12	30	0,52		
22	70,60	66,93	P1204H	50	12	28	0,46	P0193H	55	12	30	0,58		
23	73,70	69,95	P1205H	52	12	28	0,50	P0194H	58	12	30	0,64		
24	76,70	72,97	P1206H	54	12	28	0,54	P0195H	61	12	30	0,71		
25	79,70	76,00	P1207H	57	12	28	0,60	P0196H	64	12	30	0,79		
26	82,70	79,02	P0154H	60	12	28	0,66	P0197H	67	12	30	0,87		
27	85,70	82,04	P0155H	60	12	28	0,67	P0198H	70	12	30	0,94		
28	88,80	85,07	P0156H	60	12	28	0,69	P0199H	73	12	30	1,03		
30	94,80	91,12	P1208H	60	12	30	0,72	P0201H	79	12	30	1,20		
32	100,90	97,17	P0160H	65	14	30	0,89	P0203H	80	16	30	1,32		
34	106,90	103,23	P0162H	65	14	30	0,92	P0205H	80	16	30	1,43		
35	110,00	106,26	P0163H	65	14	30	0,95	P0206H	80	16	30	1,49		
36	113,00	109,29	P0164H	70	16	30	1,05	P0207H	90	16	30	1,70		
38	119,00	115,34	P0166H	70	16	30	1,10	P0209H	90	16	30	1,81		
40	125,10	121,40	P0168H	70	16	30	1,14	P0211H	90	16	30	1,95		

Koła łańcuchowe

Koła łańcuchowe z piastą i utwardzonymi zębami dla łańcucha rolkowego

DIN 8187 - ISO / R 606

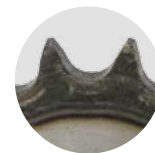
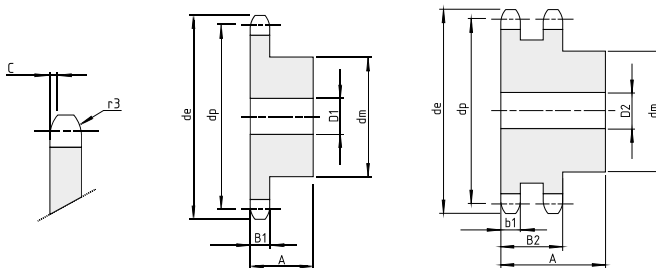


Materiał: stal C45			1/2" x 5/16"					podziałka 12,7 mm		B1	B2	b1	C	r3
									7,2	21	7	1,3	13	
Z	de	dp	1-rzędowe 08B-1					2-rzędowe 08B-2						
			kod	dm	D1	A	[kg]	kod	dm	D2	A	[kg]		
8	38,00	33,18	P0323H	20	10	25	0,06	P0366H	20	10	32	0,09		
9	42,00	37,13	P0324H	24	10	25	0,09	P0367H	24	10	32	0,13		
10	45,90	41,10	P0325H	26	10	25	0,12	P0368H	28	10	32	0,18		
11	49,90	45,07	P0326H	29	10	25	0,15	P0369H	32	12	35	0,24		
12	53,90	49,07	P1209H	33	10	28	0,21	P0370H	35	12	35	0,30		
13	57,90	53,06	P1210H	37	10	28	0,26	P0371H	38	12	35	0,36		
14	61,90	57,07	P1211H	41	10	28	0,32	P0372H	42	12	35	0,44		
15	65,90	61,09	P1212H	45	10	28	0,38	P0373H	46	12	35	0,52		
16	69,90	65,10	P1213H	50	12	28	0,46	P0374H	50	14	35	0,63		
17	74,00	69,11	P1214H	52	12	28	0,51	P0375H	54	14	35	0,73		
18	78,00	73,14	P1215H	56	12	28	0,59	P0376H	58	14	35	0,85		
19	82,00	77,16	P1216H	60	12	28	0,67	P0377H	62	14	35	0,97		
20	86,00	81,19	P1217H	64	12	28	0,76	P0378H	66	14	35	1,10		
21	90,10	85,22	P1218H	68	12	28	0,85	P0379H	70	16	40	1,29		
22	94,10	89,24	P1219H	70	12	28	0,91	P0380H	70	16	40	1,37		
23	98,10	93,27	P1220H	70	14	28	0,95	P0381H	70	16	40	1,46		
24	102,10	97,29	P1221H	70	14	28	0,98	P0382H	75	16	40	1,64		
25	106,20	101,33	P1222H	70	14	28	1,01	P0383H	80	16	40	1,82		
26	110,20	105,36	P0341H	70	16	30	1,09	P0384H	85	16	40	2,02		
27	114,20	109,40	P0342H	70	16	30	1,13	P0385H	85	20	40	2,12		
28	118,30	113,42	P0343H	70	16	30	1,17	P0386H	90	20	40	2,34		
30	126,30	121,50	P1223H	80	16	30	1,46	P0388H	100	20	40	2,79		
31	130,40	125,54	P0346H	90	16	30	1,74	P0389H	100	20	40	2,87		
32	134,40	129,56	P0347H	90	16	30	1,78	P0390H	100	20	40	3,00		
34	142,50	137,64	P0349H	90	16	30	1,88	P0392H	100	20	40	3,26		
35	146,50	141,68	P0350H	90	16	30	1,93	P0393H	100	20	40	3,40		
36	150,60	145,72	P0351H	90	16	35	2,22	P0394H	110	20	40	3,54		
38	158,60	153,80	P0353H	90	16	35	2,32	P0396H	110	20	40	3,84		
40	166,70	161,87	P0355H	90	16	35	2,43	P0398H	110	20	40	4,15		

Koła łańcuchowe

Koła łańcuchowe z piastą i utwardzonymi zębami dla łańcucha rolkowego

DIN 8187 - ISO / R 606

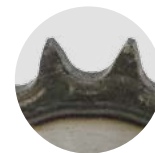
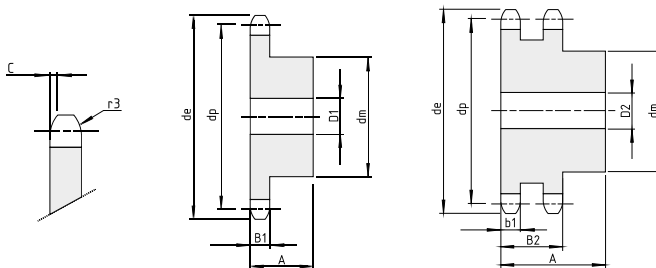


Materiał: stal C45			5/8" x 3/8" podziałka 15,875 mm					B1	B2	b1	C	r3
Z	de	dp	1-rzędowe 10B-1					2-rzędowe 10B-2				
			kod	dm	D1	A	[kg]	kod	dm	D2	A	[kg]
8	48,40	41,48	P0447H	25	10	25	0,12	P0490H	25	12	40	0,19
9	53,30	46,42	P0448H	30	10	25	0,16	P0491H	30	12	40	0,27
10	58,30	51,37	P0449H	35	10	25	0,22	P0492H	35	12	40	0,36
11	63,20	56,34	P0450H	37	12	30	0,29	P0493H	39	14	40	0,43
12	68,20	61,34	P1224H	42	12	30	0,37	P0494H	44	14	40	0,55
13	73,20	66,32	P1225H	47	12	30	0,46	P0495H	49	14	40	0,68
14	78,20	71,34	P1226H	52	12	30	0,56	P0496H	54	14	40	0,82
15	83,20	76,36	P1227H	57	12	30	0,67	P0497H	59	14	40	0,97
16	88,30	81,37	P1228H	60	12	30	0,76	P0498H	64	16	45	1,26
17	93,30	86,39	P1229H	60	12	30	0,88	P0499H	69	16	45	1,46
18	98,30	91,42	P1230H	70	14	30	1,01	P0500H	74	16	45	1,67
19	103,30	96,45	P1231H	70	14	30	1,15	P0501H	79	16	45	1,90
20	108,40	101,49	P1232H	75	14	30	1,21	P0502H	84	16	45	2,14
21	113,40	106,52	P1233H	75	16	30	1,35	P0503H	85	16	45	2,27
22	118,40	111,55	P1234H	80	16	30	1,41	P0504H	90	16	45	2,54
23	123,50	116,58	P1235H	80	16	30	1,47	P0505H	95	16	45	2,82
24	128,50	121,62	P1236H	80	16	30	1,54	P0506H	100	16	45	3,11
25	133,60	126,66	P1237H	80	16	30	1,60	P0507H	105	16	45	3,15
26	138,60	131,70	P0465H	85	20	35	1,96	P0508H	110	20	45	3,74
27	143,60	136,75	P0466H	85	20	35	2,04	P0509H	110	20	45	3,94
28	148,70	141,78	P0467H	90	20	35	2,25	P0510H	115	20	45	4,28
30	158,80	151,87	P1238H	90	20	35	2,41	P0512H	120	20	45	4,87
32	168,90	161,95	P0471H	95	20	35	2,73	P0514H	120	20	45	5,34
34	178,90	172,05	P0473H	95	20	35	2,92	P0516H	120	20	45	5,84
35	184,00	177,10	P0474H	95	20	35	3,01	P0517H	120	20	45	6,11
36	189,00	182,15	P0475H	100	20	35	3,27	P0518H	120	20	45	6,38
38	199,10	192,24	P0477H	100	20	35	3,47	P0520H	120	20	45	6,95
40	209,20	202,34	P0479H	100	20	35	3,69	P0522H	120	20	45	7,55

Koła łańcuchowe

Koła łańcuchowe z piastą i utwardzonymi zębami dla łańcucha rolkowego

DIN 8187 - ISO / R 606

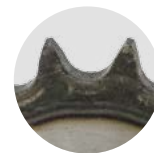
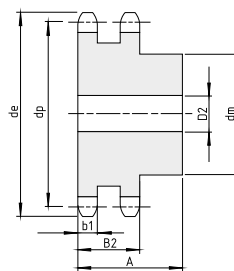
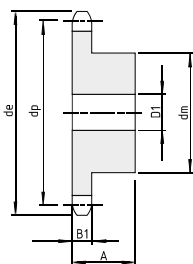
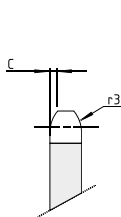


Materiał: stal C45			3/4" x 7/16"					podziałka 19,05 mm		B1	B2	b1	C	r3
								11,1	30,3	10,8	2	19		
Z	de	dp	1-rzędowe 12B-1					2-rzędowe 12B-2						
			kod	dm	D1	A	[kg]	kod	dm	D2	A	[kg]		
8	58,00	49,78	P0571H	31	12	30	0,21	P0614H	31	12	45	0,31		
9	63,90	55,70	P0572H	37	12	30	0,29	P0615H	37	12	45	0,44		
10	69,80	61,64	P0573H	42	12	30	0,38	P0616H	42	12	45	0,59		
11	75,80	67,61	P0574H	46	14	35	0,51	P0617H	47	16	50	0,81		
12	81,80	73,60	P1239H	52	14	35	0,65	P0618H	53	16	50	1,02		
13	87,80	79,59	P1240H	58	14	35	0,80	P0619H	59	16	50	1,25		
14	93,80	85,61	P1241H	64	14	35	0,97	P0620H	65	16	50	1,46		
15	99,80	91,63	P1242H	70	14	35	1,16	P0621H	71	16	50	1,74		
16	105,80	97,65	P1243H	75	16	35	1,34	P0622H	77	20	50	2,03		
17	111,90	103,67	P1244H	80	16	35	1,53	P0623H	83	20	50	2,36		
18	117,90	109,71	P1245H	80	16	35	1,62	P0624H	89	20	50	2,70		
19	123,90	115,75	P1246H	80	16	35	1,70	P0625H	95	20	50	3,07		
20	130,00	121,78	P1247H	80	16	35	1,80	P0626H	100	20	50	3,43		
21	136,00	127,82	P1248H	90	20	40	2,35	P0627H	100	20	50	3,69		
22	142,00	133,86	P1249H	90	20	40	2,46	P0628H	100	20	50	3,97		
23	148,10	139,90	P1250H	90	20	40	2,56	P0629H	100	20	50	4,51		
24	154,10	145,94	P1251H	90	20	40	2,68	P0630H	100	20	50	4,81		
25	160,20	152,00	P1252H	90	20	40	2,80	P0631H	120	20	50	5,41		
26	166,20	158,04	P0589H	95	20	40	3,08	P0632H	120	20	50	5,73		
27	172,30	164,09	P0590H	95	20	40	3,21	P0633H	120	20	50	6,08		
28	178,30	170,13	P0591H	95	20	40	3,34	P0634H	120	20	50	6,43		
30	190,40	182,25	P1253H	95	20	40	3,63	P0636H	120	20	50	7,19		
32	202,50	194,35	P0595H	100	20	40	3,93	P0638H	130	20	50	8,00		
34	214,60	206,46	P0597H	100	20	40	4,25	P0640H	130	20	50	8,86		
35	220,70	212,52	P0598H	100	20	40	4,42	P0641H	130	20	50	9,31		
36	226,80	218,58	P0599H	100	20	40	4,71	P0642H	130	25	50	9,71		
38	238,90	230,69	P0601H	100	20	40	5,07	P0644H	130	25	50	10,78		
40	251,00	242,81	P0603H	100	20	40	5,46	P0646H	130	25	50	11,71		

Koła łańcuchowe

Koła łańcuchowe z piastą i utwardzonymi zębami dla łańcucha rolkowego

DIN 8187 - ISO / R 606



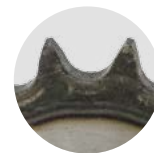
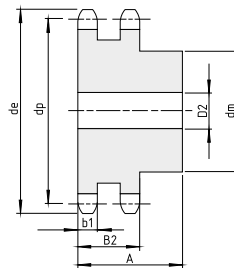
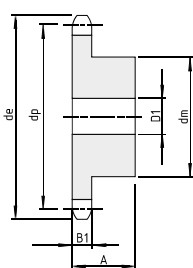
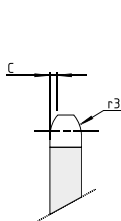
Materiał: stal C45			1" x 17,02 mm					podziałka 25,4 mm		B1	B2	b1	C	r3
									16,2	47,7	15,8	2,5	26	
Z	de	dp	1-rzędowe 16B-1					2-rzędowe 16B-2						
			kod	dm	D1	A	[kg]	kod	dm	D2	A	[kg]		
8	77,90	66,37	P0695H	42	16	35	0,47	P0737H	42	16	65	0,81		
9	85,80	74,27	P0696H	50	16	35	0,66	P0738H	50	16	65	1,15		
10	93,80	82,19	P0697H	55	16	35	0,83	P0739H	56	16	65	1,52		
11	101,70	90,14	P0698H	61	16	40	1,14	P0740H	64	20	70	2,08		
12	109,70	98,14	P1254H	69	16	40	1,43	P0741H	72	20	70	2,60		
13	117,70	106,12	P1255H	78	16	40	1,77	P0742H	80	20	70	3,18		
14	125,70	114,15	P1256H	84	16	40	2,08	P0743H	88	20	70	3,82		
15	133,70	122,17	P1257H	92	16	40	2,46	P0744H	96	20	70	4,51		
16	141,80	130,20	P1258H	100	20	45	3,14	P0745H	104	20	70	5,17		
17	149,80	138,22	P1259H	100	20	45	3,33	P0746H	112	20	70	5,98		
18	157,80	146,28	P1260H	100	20	45	3,56	P0747H	120	20	70	6,84		
19	165,90	154,33	P1261H	100	20	45	3,78	P0748H	128	20	70	7,76		
20	173,90	162,38	P1262H	100	20	45	4,03	P0749H	130	20	70	8,52		
21	182,00	170,43	P1263H	110	20	50	5,01	P0750H	130	25	70	9,24		
22	190,10	178,48	P1264H	110	20	50	5,28	P0751H	*130	25	70	10,00		
23	198,10	186,53	P1265H	110	20	50	5,56	P0752H	*130	25	70	10,80		
24	206,20	194,59	P1266H	110	20	50	5,86	P0753H	*130	25	70	11,64		
25	214,20	202,66	P1267H	110	20	50	6,16	P0754H	*130	25	70	12,52		
26	222,30	210,72	P0713H	120	20	50	6,96	P0755H	*130	25	70	13,43		
27	230,40	218,79	P0714H	120	20	50	7,30	P0756H	*130	25	70	14,38		
28	238,40	226,85	P0715H	120	20	50	7,64	P0757H	*130	25	70	15,38		
30	254,60	243,00	P1268H	120	20	50	8,38	P0759H	*130	25	70	17,48		
32	270,70	259,13	P0719H	*120	25	50	9,09	P0761H	*140	25	70	20,10		
34	286,90	275,28	P0721H	*120	25	50	9,93	P0763H	*140	25	70	22,21		
35	294,90	283,36	P0722H	*120	25	50	10,36	P0764H	*140	25	70	23,77		
36	303,00	291,44	P0723H	*120	25	50	10,81	P0765H	*140	25	70	25,07		
38	319,20	307,59	P0725H	*120	25	50	11,76	P0767H	*140	25	70	27,79		
40	335,30	323,73	P0727H	*120	25	50	12,75	P0769H	*140	25	70	30,65		

*Spawana piasta.

Koła łańcuchowe

Koła łańcuchowe z piastą i utwardzonymi zębami dla łańcucha rolkowego

DIN 8187 - ISO / R 606



Materiał: stal C45			1"1/4 x 3/4"					podziałka 31,75 mm		B1	B2	b1	C	r3
								18,5	54,6	18,2	3,5	32		
Z	de	dp	1-rzędowe 20B-1					2-rzędowe 20B-2						
			kod	dm	D1	A	[kg]	kod	dm	D2	A	[kg]		
8	96,00	82,96	P0815H	53	20	40	0,85	P0857H	53	20	75	1,58		
9	106,50	92,84	P0816H	63	20	40	1,19	P0858H	63	20	75	2,19		
10	117,00	102,74	P0817H	70	20	40	1,51	P0859H	70	20	75	2,85		
11	127,00	112,68	P0818H	77	20	45	2,04	P0860H	80	20	80	3,72		
12	137,00	122,68	P0819H	88	20	45	2,58	P0861H	90	20	80	4,66		
13	147,50	132,65	P0820H	98	20	45	3,15	P0862H	100	20	80	5,70		
14	157,60	142,68	P0821H	108	20	45	3,78	P0863H	110	20	80	6,84		
15	167,70	152,72	P0822H	118	20	45	4,47	P0864H	120	20	80	8,08		
16	177,70	162,75	P0823H	120	25	50	5,25	P0865H	120	25	80	8,90		
17	187,70	172,78	P0824H	120	25	50	5,61	P0866H	120	25	80	9,92		
18	197,80	182,85	P0825H	120	25	50	6,00	P0867H	*120	25	80	11,00		
19	207,90	192,91	P0826H	120	25	50	6,40	P0868H	*120	25	80	12,16		
20	217,90	202,98	P0827H	120	25	50	6,84	P0869H	*120	25	80	13,38		
21	228,00	213,04	P0828H	140	25	55	8,79	P0870H	*140	25	80	15,49		
22	238,10	223,11	P0829H	140	25	55	9,27	P0871H	*140	25	80	16,86		
23	248,20	233,17	P0830H	140	25	55	9,77	P0872H	*140	25	80	18,29		
24	258,30	243,23	P0831H	140	25	55	10,30	P0873H	*140	25	80	19,79		
25	268,40	253,33	P0832H	140	25	55	10,85	P0874H	*140	25	80	21,36		
26	278,40	263,40	P0833H	*150	25	55	12,07	P0875H	*150	25	80	23,45		
27	288,50	273,48	P0834H	*150	25	55	12,67	P0876H	*150	25	80	25,15		
28	298,50	283,56	P0835H	*150	25	55	13,29	P0877H	*150	25	80	26,93		
30	318,70	303,75	P0837H	*150	25	55	14,60	P0879H	*150	25	80	30,69		
32	338,90	323,91	P0839H	*150	25	55	16,00	P0881H	*150	25	80	34,72		
34	359,10	344,10	P0841H	*150	25	55	17,49	P0882H	*150	25	80	39,03		
35	369,20	354,20	P0842H	*150	25	55	18,27	P0883H	*150	25	80	41,28		
36	379,20	364,30	P0843H	*150	25	55	19,08	P0884H	*150	30	80	43,61		
38	399,40	384,49	P0845H	*150	25	55	20,76	P0885H	*150	30	80	48,46		
40	419,60	404,66	P0847H	*150	25	55	22,53	P0886H	*150	30	80	53,60		

*Spawana piasta.